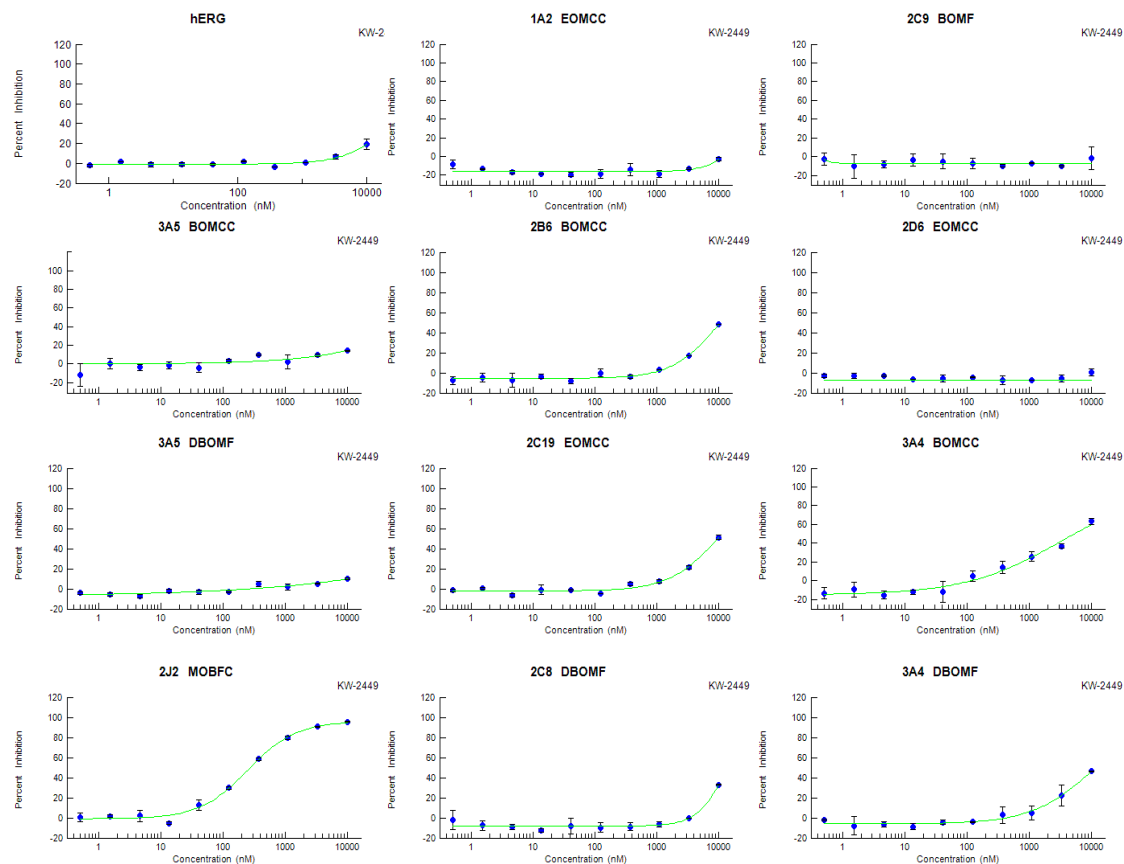


A



B

KW-2449 (10000nM)	% Inhibition
hERG	19
2J2 MOBFC - P450	96
3A4 BOMCC - P450	63
2C19 EOMCC - P450	51
2B6 BOMCC - P450	48
3A4 DBOMF - P450	46
2C8 DBOMF - P450	33
3A5 BOMCC - P450	14
3A5 DBOMF - P450	10
2D6 EOMCC - P450	1
2C9 BOMF - P450	-2
1A2 EOMCC - P450	-3

Supplementary Figure 1. KW-2449 – Drug safety and toxicology (SelectScreen P450 Vivid Biochemical Assay, Life Technologies, USA). (A) KW-2449 showed $IC_{50} \geq 10,000nM$ (the highest concentration tested) in screens, with positive controls, for each isoform considered of potential risk, except for 2B6 BOMCC ($IC_{50} = 9,800nM$), 2C19 EOMCC ($IC_{50} = 9,410nM$), 3A4 BOMCC ($IC_{50} = 3,300nM$) and 2J2 MOBFC ($IC_{50} = 249$). (B) Table of amount of inhibition KW-2449 has on enzymes implicit in drug metabolism.