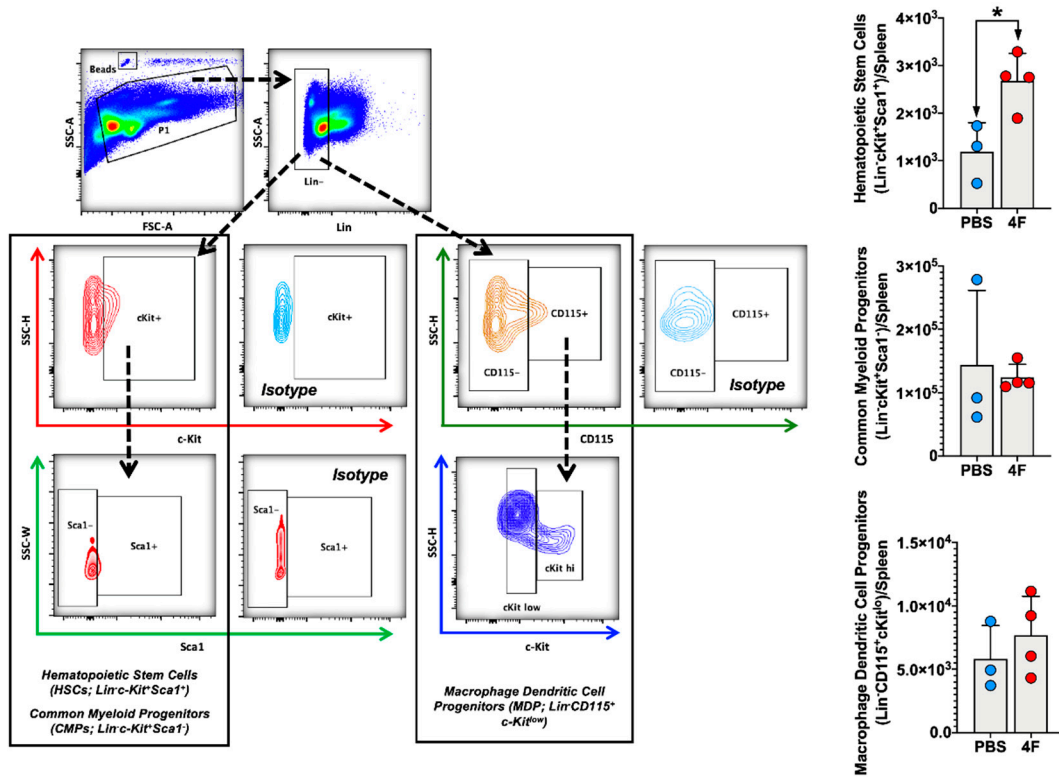


Supplementary Materials



**Figure S1.** L-4F enhances hematopoietic stem cell (HSC) abundance in WT naïve mice. Gating strategy for flow cytometric quantitation and corresponding group data of splenic HSCs, common myeloid progenitors (CMPs), and macrophage dendritic cell progenitors (MDPs) following L-4F (100 µg/day) or PBS treatment in WT naïve mice for 5 days. HSCs were identified as Lin<sup>-</sup>c-Kit<sup>+</sup>Sca1<sup>+</sup> cells, CMPs were identified as Lin<sup>-</sup>c-Kit<sup>+</sup>Sca1<sup>-</sup> cells, and MDPs were identified as Lin<sup>-</sup>CD115<sup>+</sup>c-Kit<sup>lo</sup> cells. Data are depicted as number of cells per spleen, *n*= 3–4/group. \* *p* < 0.05.