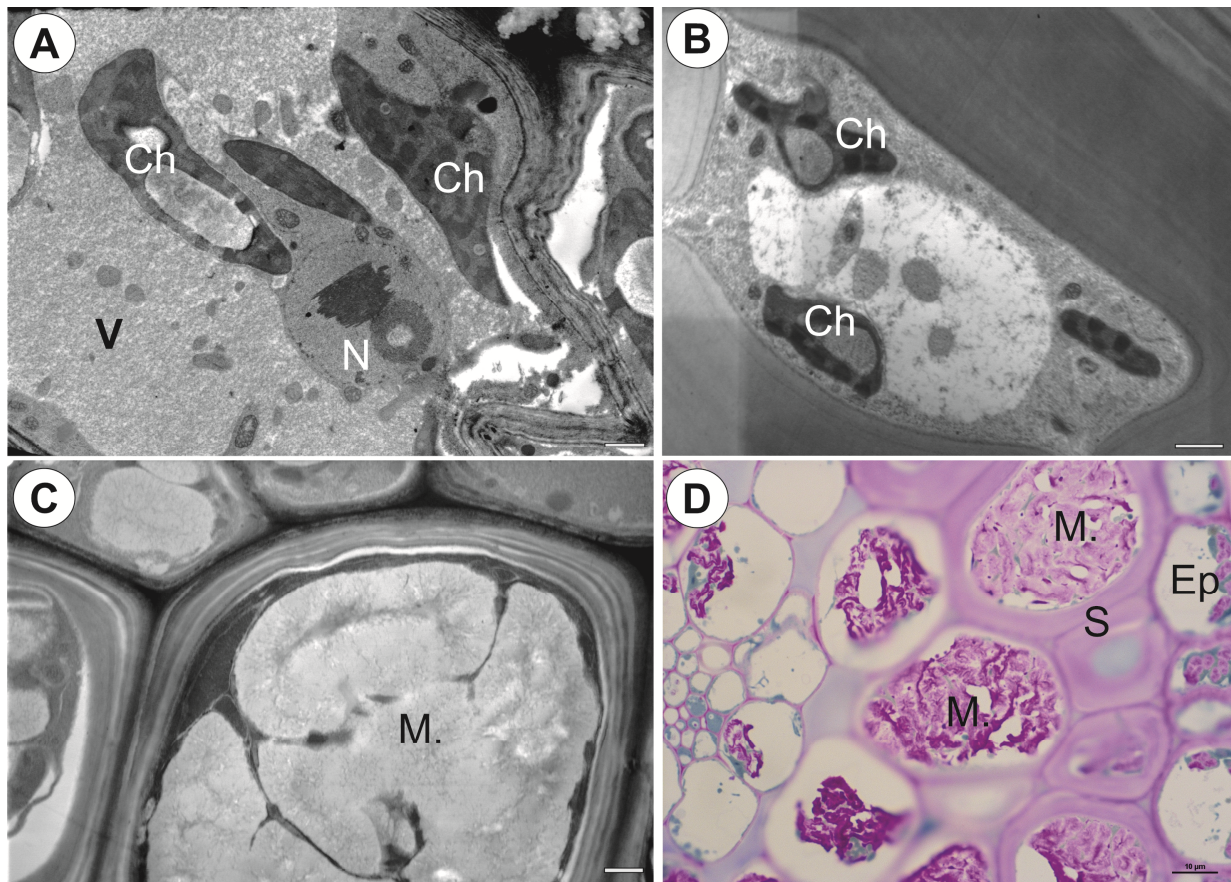


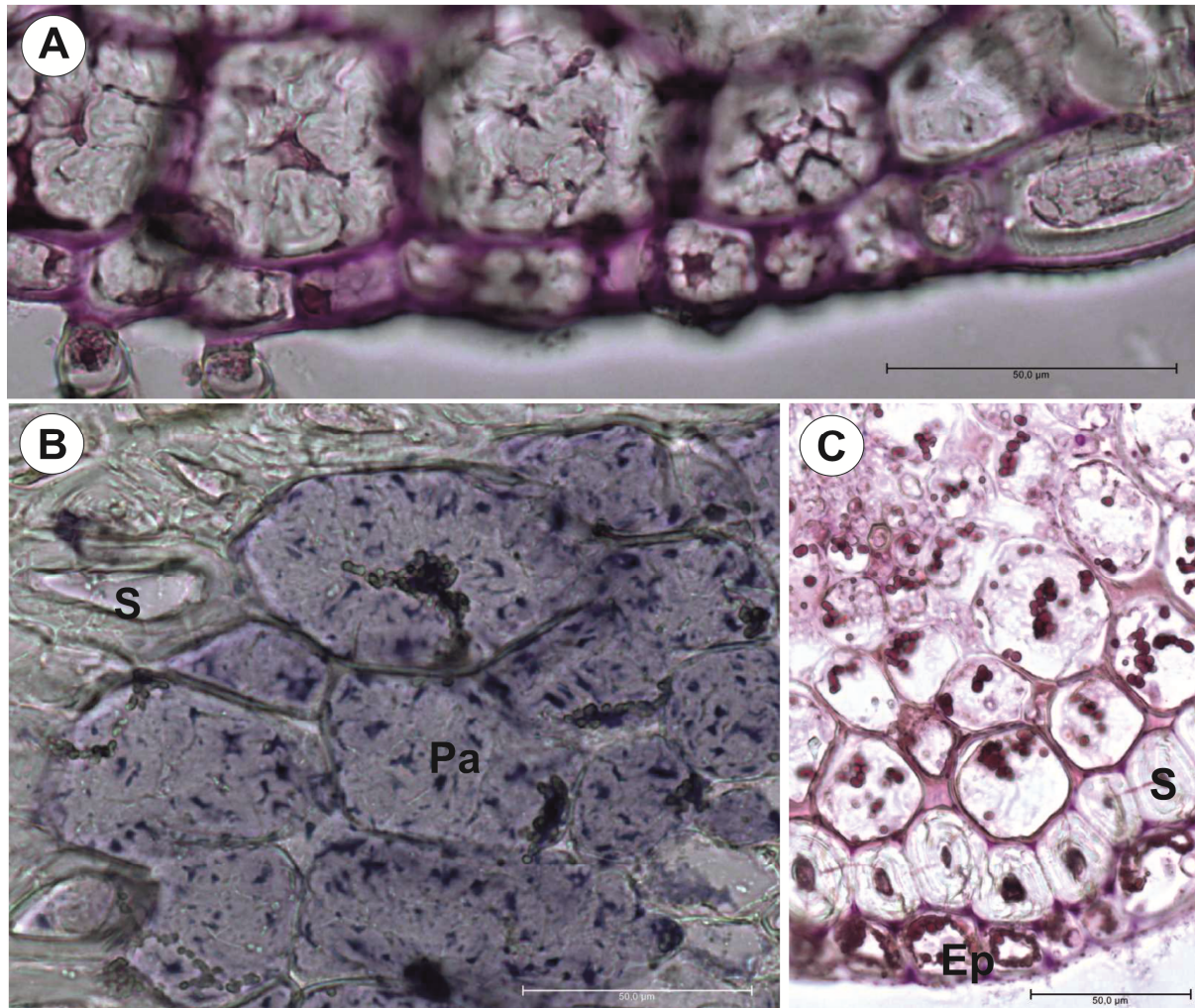


**Supplementary Materials:** Supplementary materials can be found at [www.mdpi.com/xxx/s1](http://www.mdpi.com/xxx/s1).

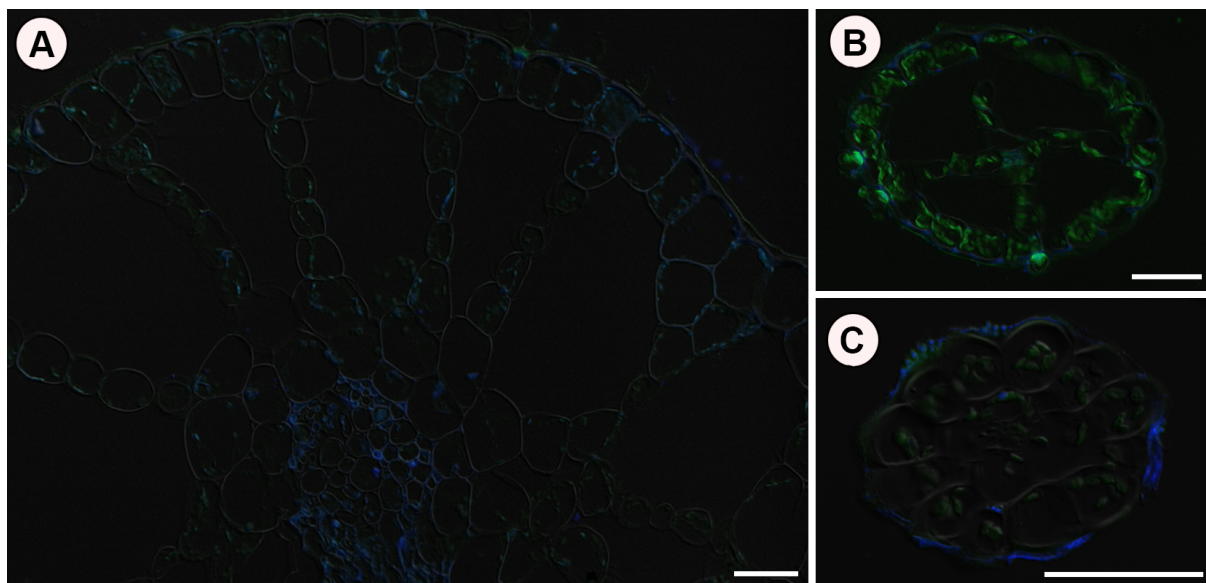


**Supplementary Materials Figure S1.** *U. neottioides* Ultrastructure and histochemistry of cells of anchor stolons. (A) Ultrastructure of epidermal cells: chloroplast (Ch), nucleus (N), vacuole with material (V), bar 2 μm. (B) Ultrastructure of sclerenchyma cell: chloroplast (Ch), bar 2 μm. (C) Ultrastructure of sclerenchyma cells: note mucilage like material in vacuole (M.), bar 2 μm. (D) part of anchor stolon; sclerenchyma cells (S) contain PAS positive material in vacuoles (M.), epidermal cell (Ep), bar 10 μm.

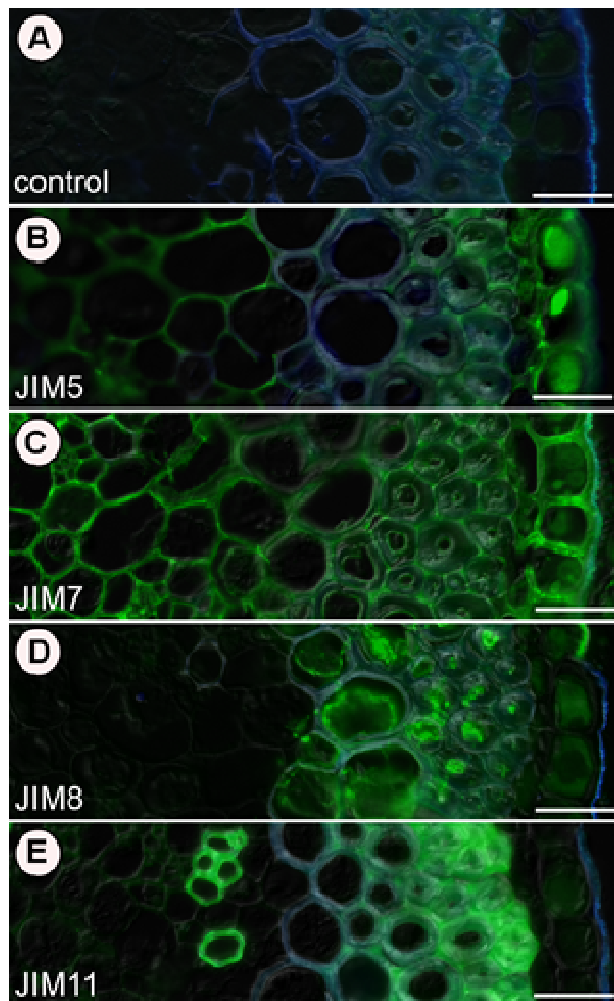




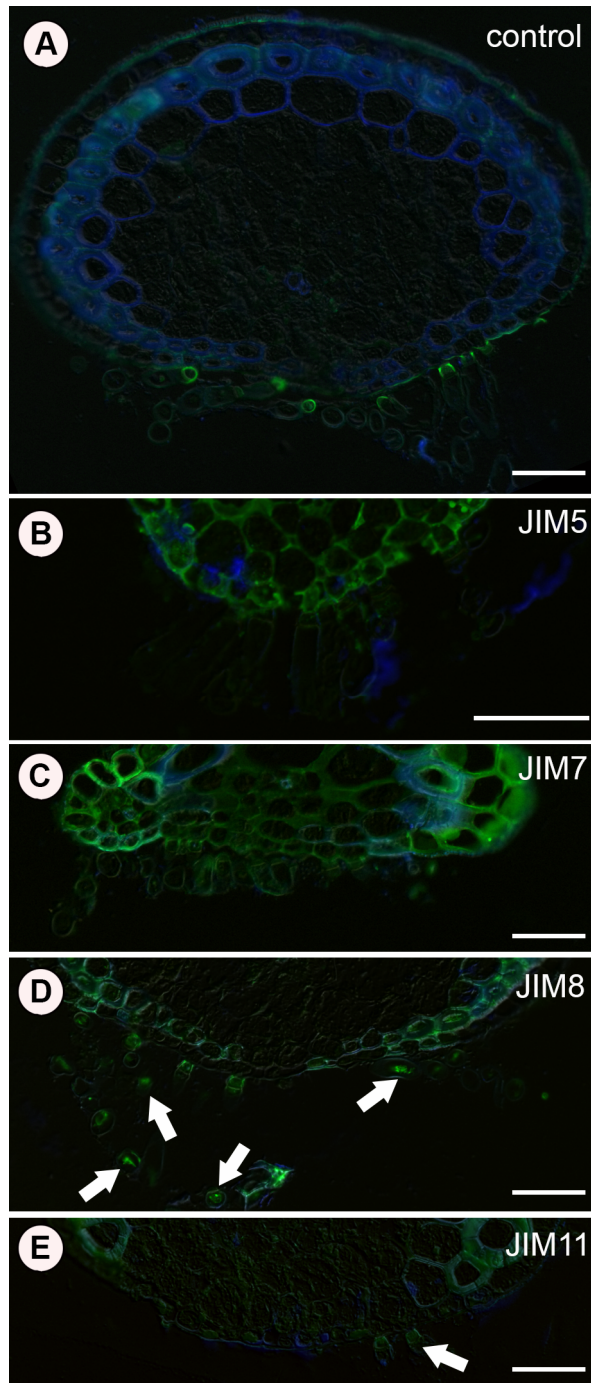
**Supplementary Materials Figure S2.** *U. neottioides*. Histochemistry of cells of anchor stolons. (A) Ruthenium red staining, (B) and (C) Lugol staining; sclerenchyma cell (S), parenchyma cell (Pa), epidermal cell (Ep). All bars 50µm.



**Supplementary Materials Figure S3.** Control reactions of immunolabeling of cell wall components. *U. reflexa*: (A) shoot and (B) leaf-like shoot and *U. neottioides*: (C) leaf-like shoot. All bars 50µm



**Supplementary Materials Figure S4.** Control reactions and immunolabeling of cell wall components of *U. neottioides* inflorescence stalk: (A) control reaction, (B) presence of JIM5, (C) presence of JIM7, (D) presence of JIM8 and (E) presence of JIM11 signal. All bars 50µm



**Supplementary Materials Figure S5.** Control reactions and immunolabeling of cell wall components of *U. neottioides* anchor stolons: (A) control reaction, (B) presence of JIM5, (C) presence of JIM7, (D) presence of JIM8 and (E) presence of JIM11 signal. Arrows show signal inside trichomes. All bars 100  $\mu\text{m}$