

Fig. 1 Kaplan Meier overall survival curve in terms of IRS (p=0.41)

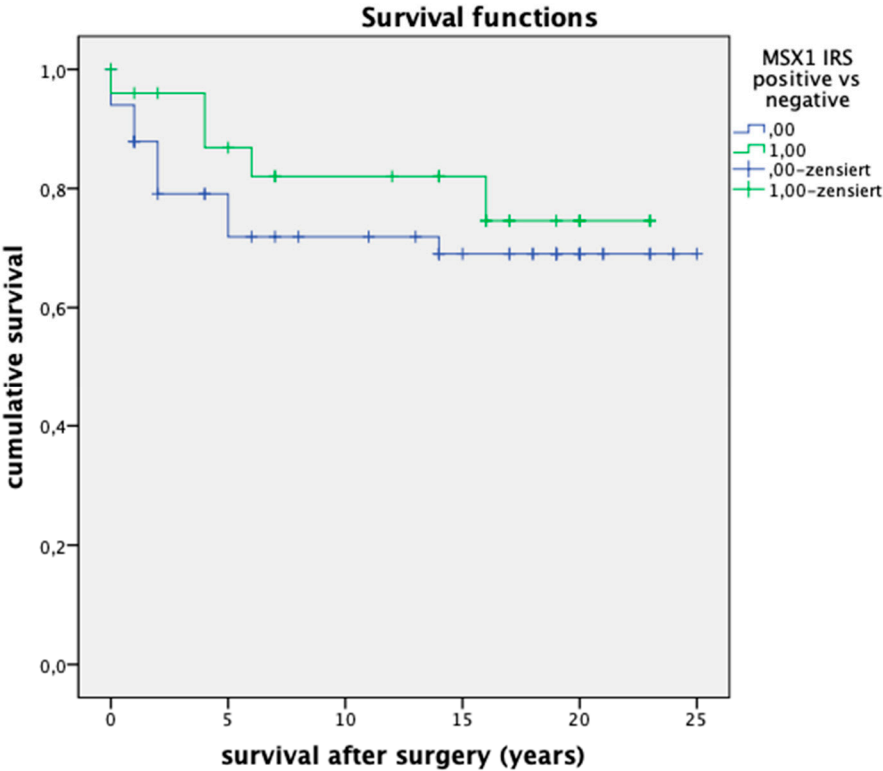


Fig. 2 Kaplan Meier overall survival curve in terms of IRS, Grading 1 (p=0.862)

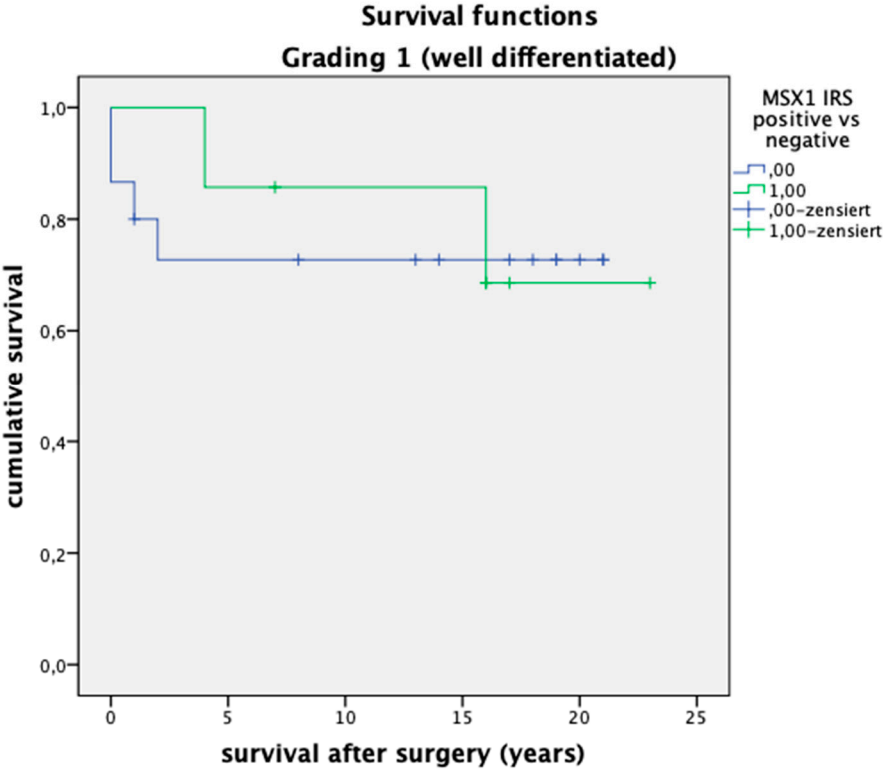


Fig. 3 Kaplan Meier overall survival curve in terms of IRS, Grading 2 (p=0.546)

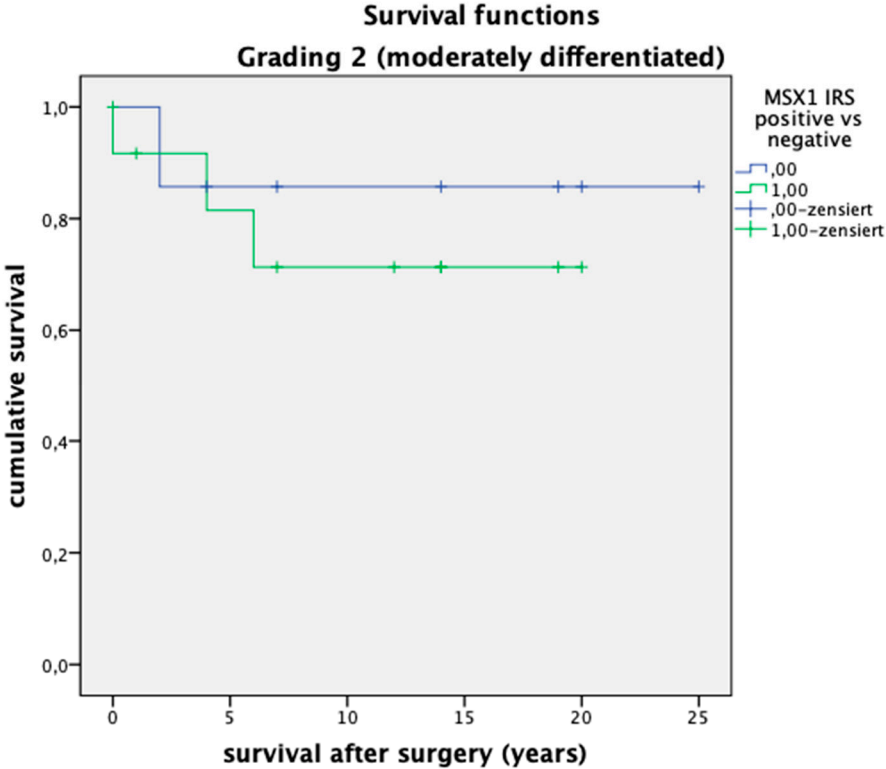
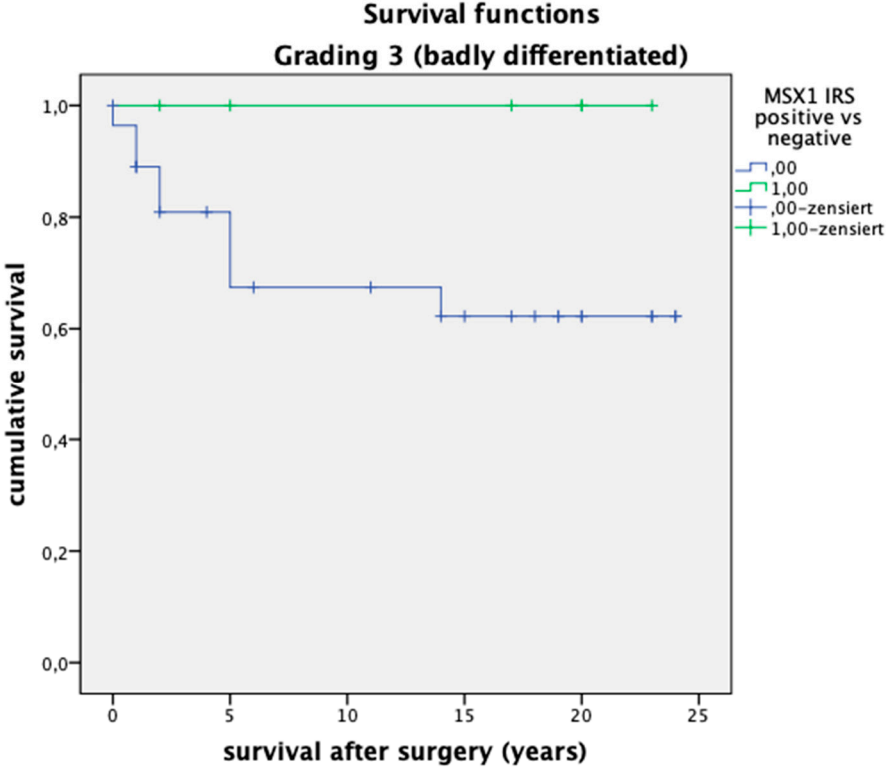


Fig. 4 Kaplan Meier overall survival curve in terms of IRS, Grading 3 (p=0.116)



Kaplan Meier overall survival curves for endometrial and ovarian carcinomas.

Fig. 5 Endometrial carcinomas (p=0.116)

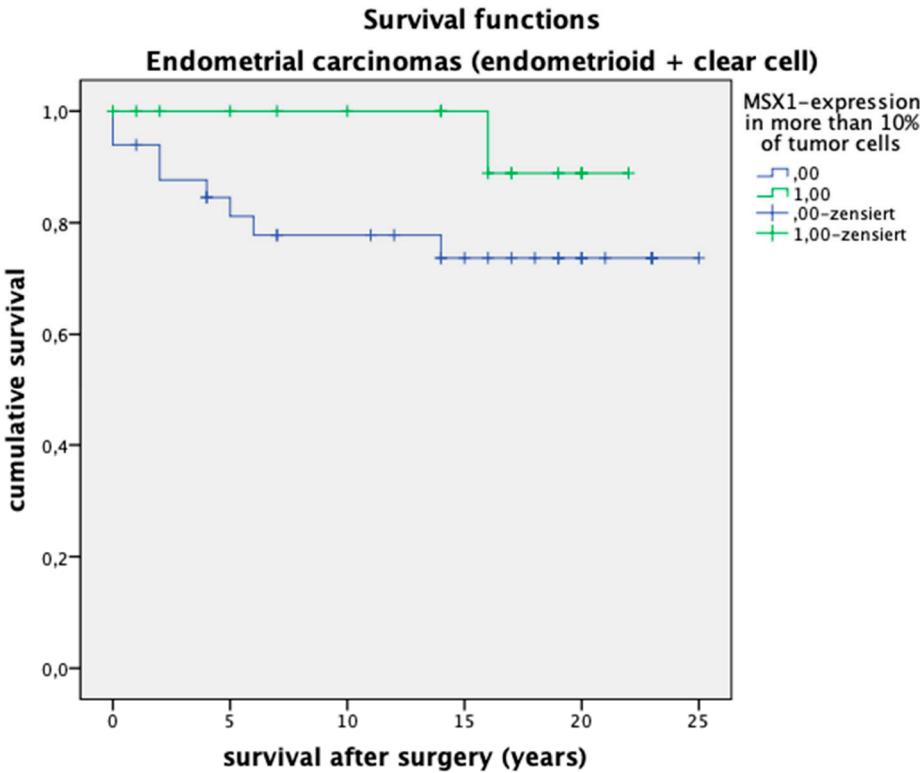
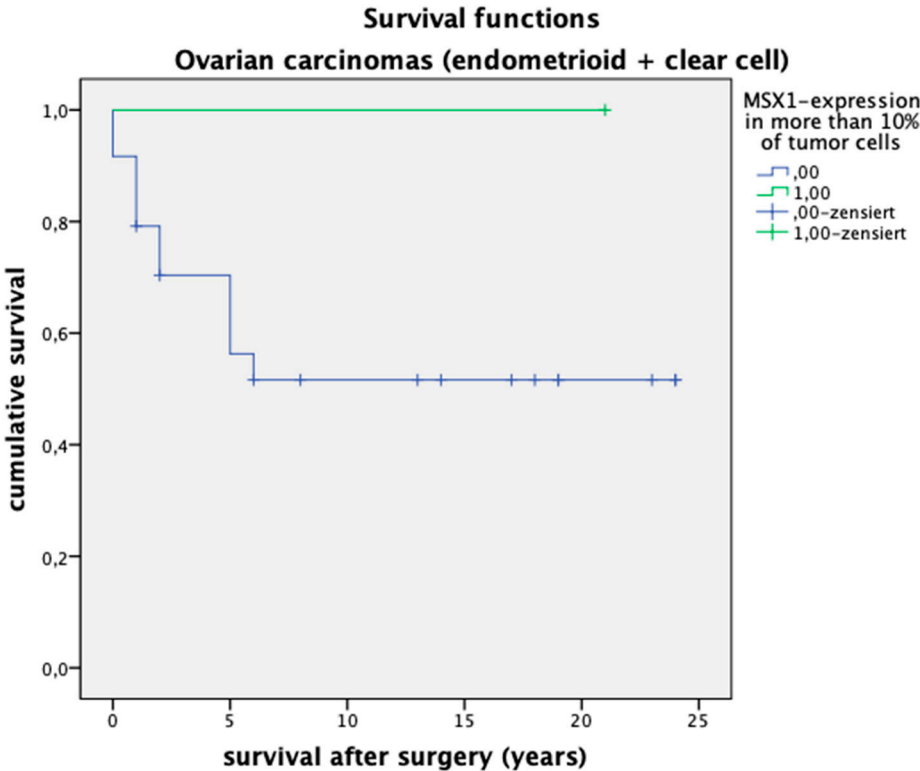


Fig. 6 Ovarian carcinomas (p=0.414)



Kaplan Meier overall survival curves for grading.

Fig. 7 Graded 1 tumors (well differentiated) (p=0.404)

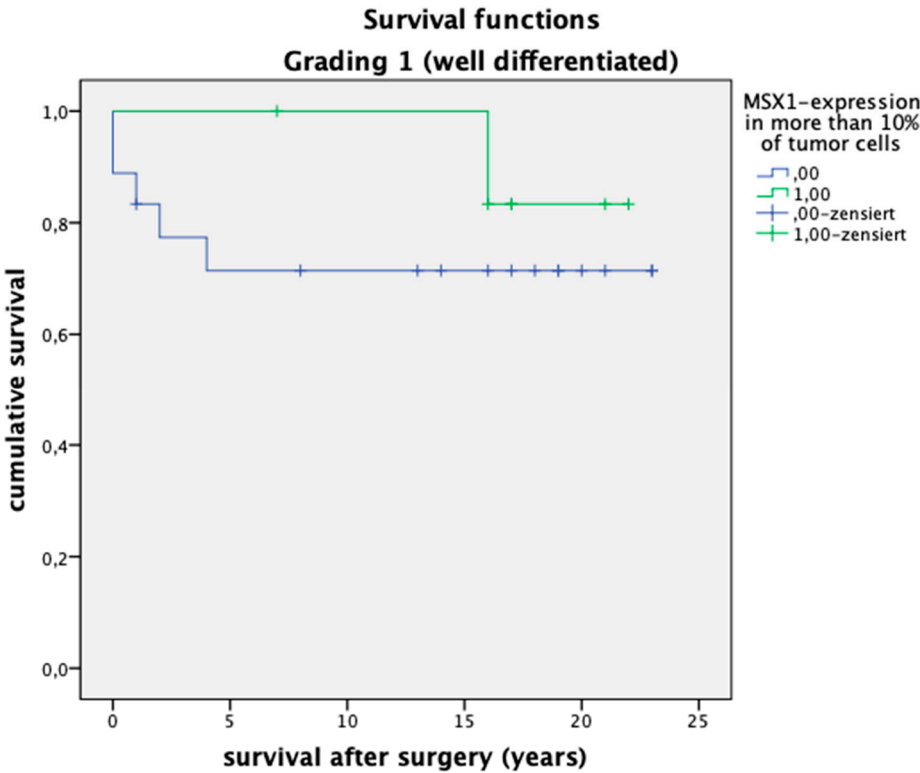


Fig. 8 Graded 2 tumors (moderately differentiated) (p=0.135)

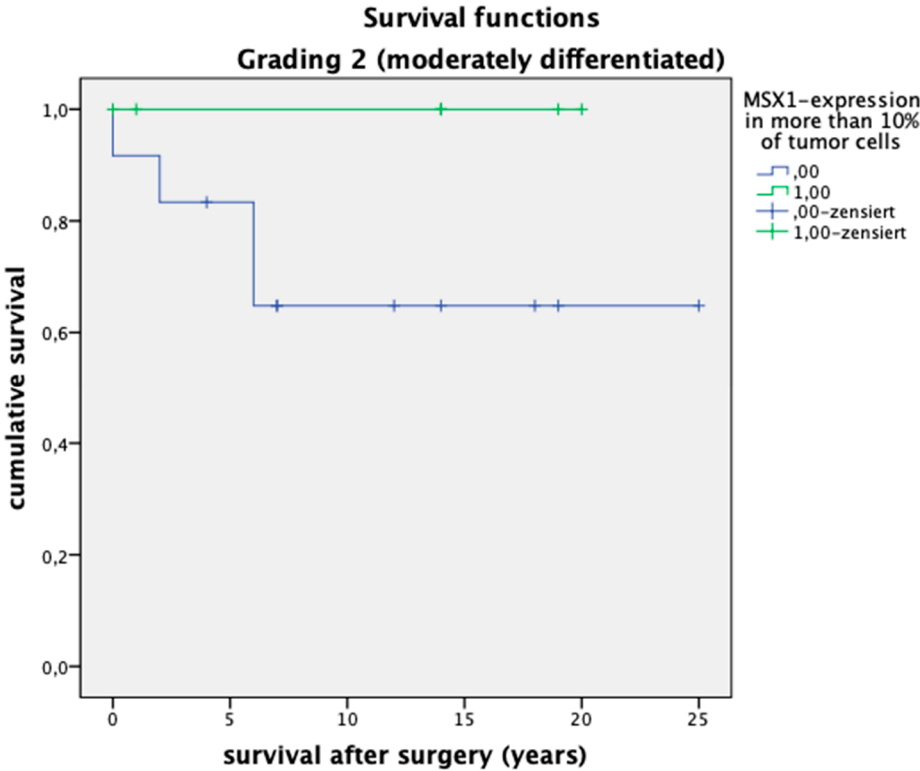


Fig. 9 Graded 3 tumors (badly differentiated) (p=0.142)

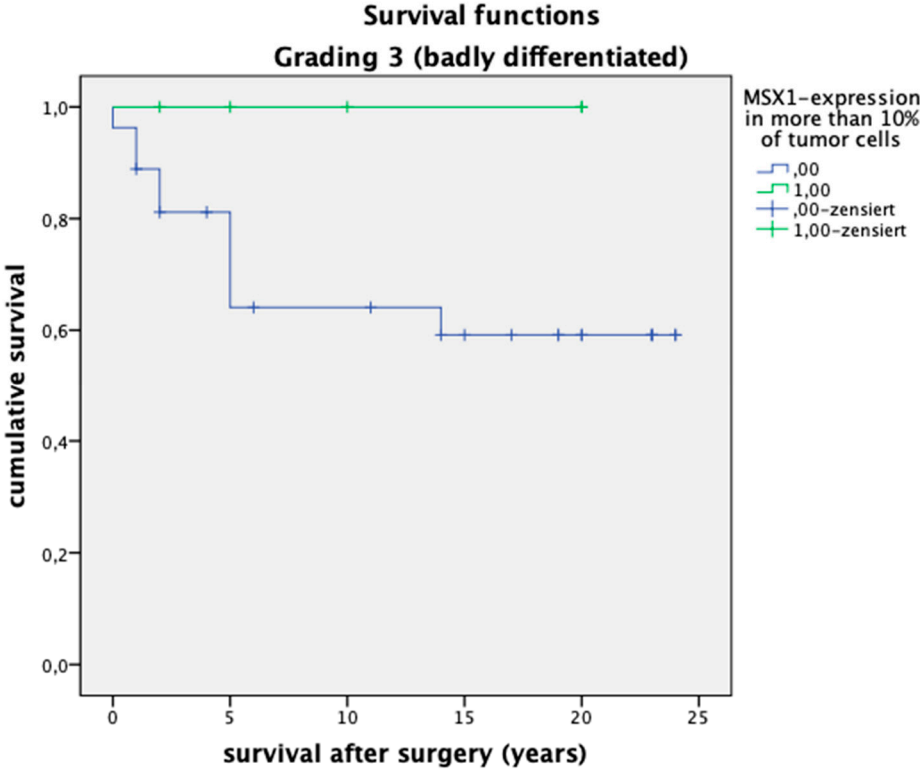


Fig. 10 ROC curve (IRS, p=0.619)

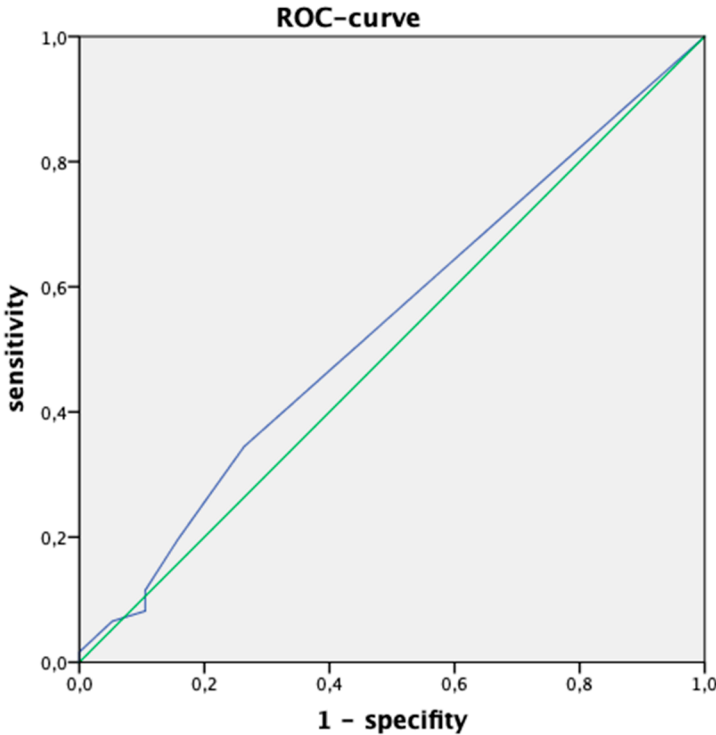


Fig. 11 ROC curve (percentage of MSX1 expression in tumor cells, p=0.591)

