

Figure S1. DBA/2-specific CTL generation. T cells were generated from splenocytes and incubated two days with exocrine material from DBA/2 islet preparation. **(A)** Confocal images of T cells cultured for 5 days after lymphocytes gradient separation and stained with anti-CD8-BV (blue) and anti-CD4-APC (magenta) isolated from WT (left panel), GzmB KI (middle panel), and Bonzo mice (right panel). **(B)** Analysis of CD8⁺ and CD4⁺ cell populations in three different mouse lines after 5 days in culture (from A).

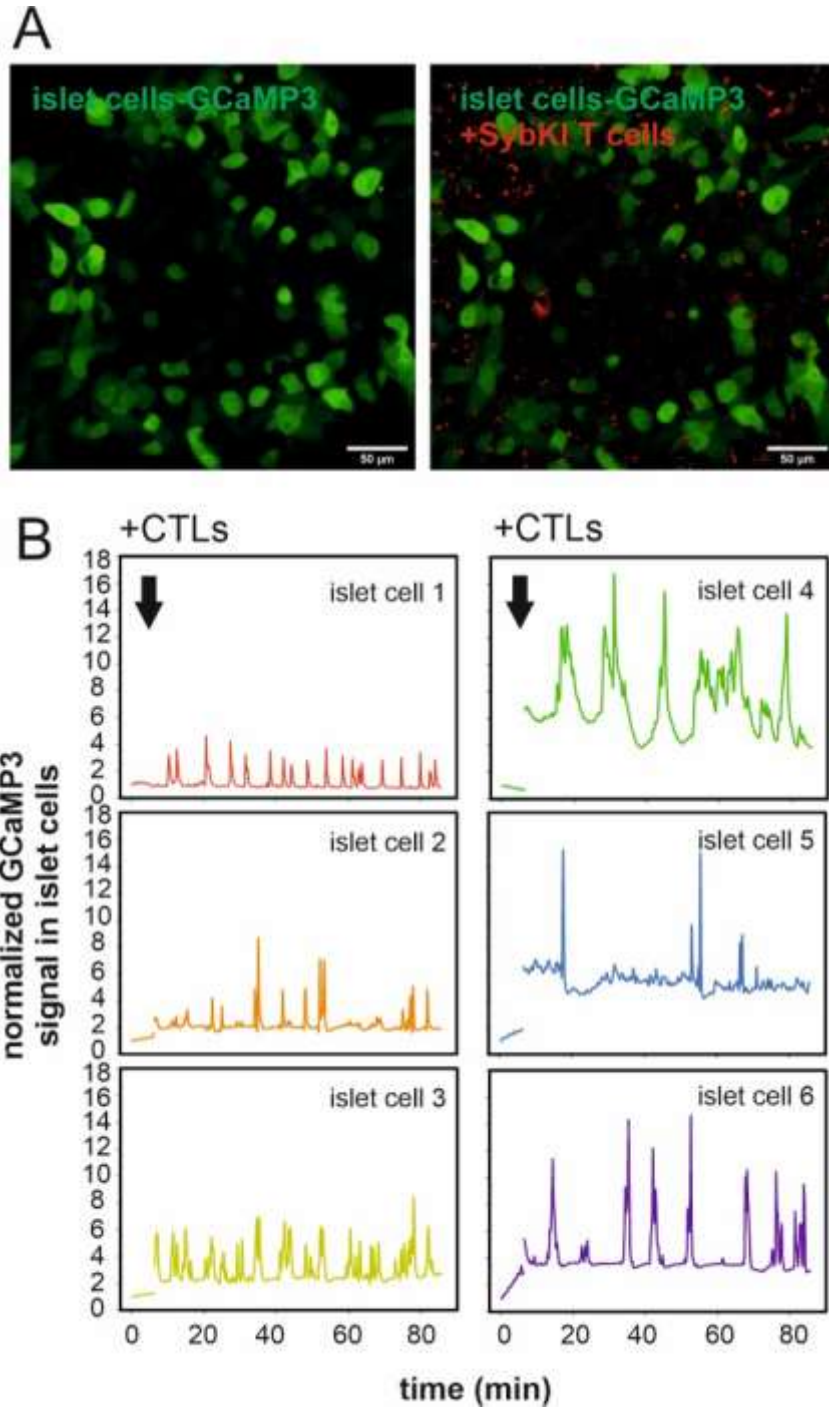


Figure S2. Intracellular calcium response in islet cells upon T cell attack. **(A)** Confocal images show islet cells infected with AV-GCaMP3 construct (green) before and after SybKI CTLs (red) co-cultured. Maximum intensity projection images are shown. **(B)** Analysis of GCaMP3 signal from live cell imaging recording. GCaMP3 signals from six individual islet cells are shown as representatives from 83 measured cells. Images were recorded for 6 min before T cell application and 76 min after adding T cells. The images were acquired in 5 μ m slices with 1 μ m interval distance and \sim 0.1 Hz acquisition frequency.