

Supporting Information for:

Controlling the kinetics of an enzymatic reaction through enzyme or substrate confinement into lipid mesophases with tunable structural parameters

Marco Mendoza¹, Arianna Balestri¹, Costanza Montis^{1,*} and Debora Berti¹

¹ Department of Chemistry "Ugo Schiff" and CSGI, Via della Lastruccia 3-13, 50019, Florence, Italy;

* Correspondence: costanza.montis@unifi.it; Tel.: +39 055 457 3017

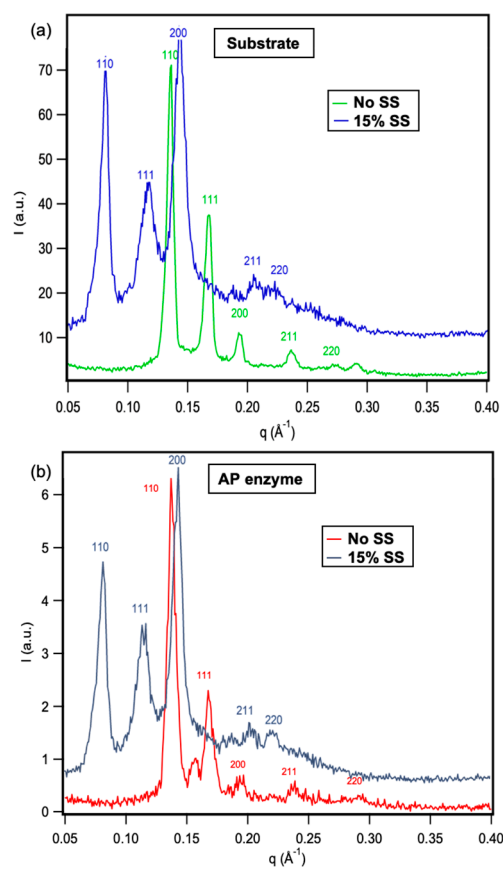


Figure S1. Structure of Phyt mesophases doped with substrate and AP enzyme. SAXS profiles of Phyt mesophases containing substrate (a) and AP enzyme (b), in excess water, measured at 25°C with and without the Sucrose Stearate (15%SS and No SS).