



1 Supplementary Material – Uncropped Gel Images

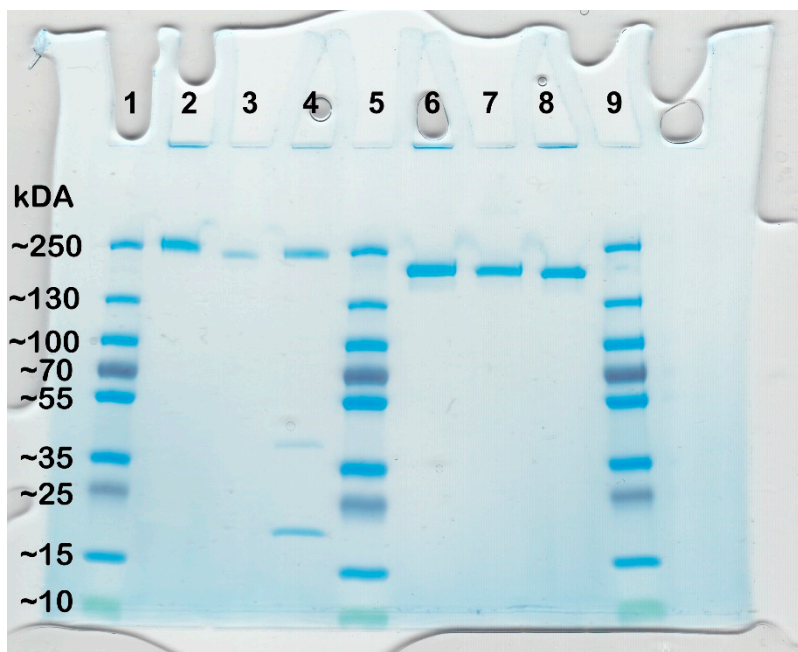


Figure S1. Uncropped gel image of SDS–PAGE, non–reducing conditions. 1, Marker; 2, M0418 IgE; 3, Isotype IgE; 4, unrelated IgE; 5, Marker; 6, M04128 IgG₁; 7, isotype IgG₁; 8, unrelated IgG₁; 9, Marker.

2
3

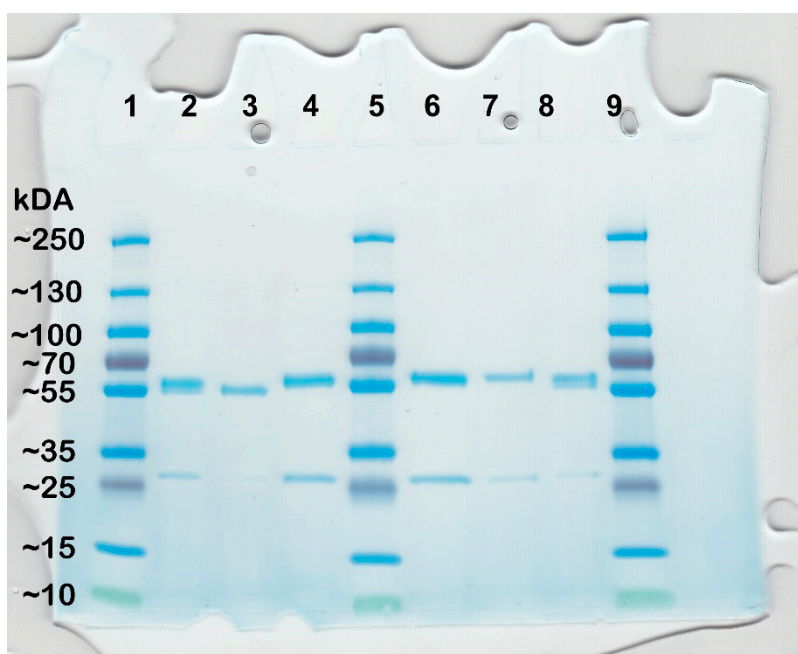


Figure S2. Uncropped gel image of SDS–PAGE, reducing conditions. 1, Marker; 2, M0418 IgG₁; 3, Isotype IgG₁; 4, unrelated IgG₁; 5, Marker; 6, M04128 IgG₄; 7, isotype IgG₄; 8, unrelated IgG₄; 9, Marker

4
5
6
7

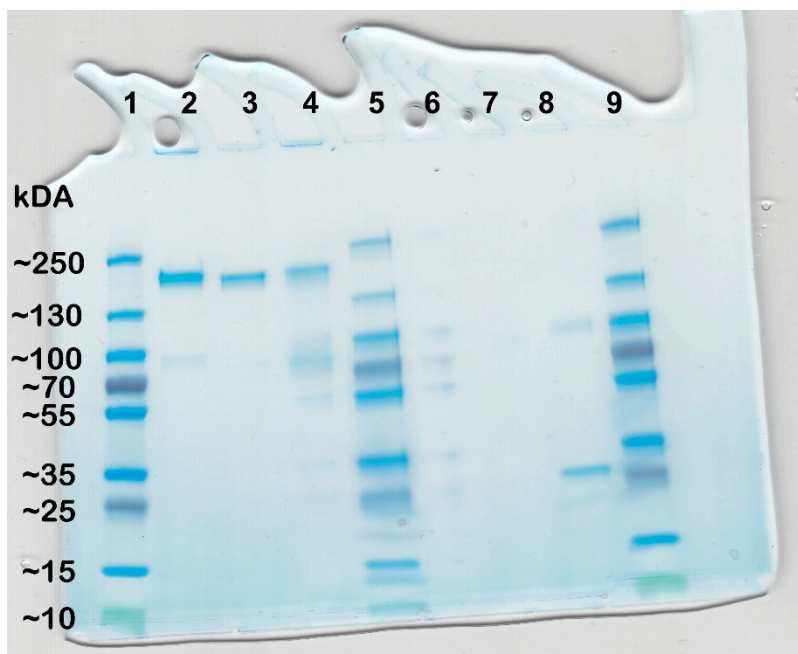


Figure S3. Uncropped gel image of SDS-PAGE, non-reducing conditions (left); 1, Marker; 2, M0418 IgG₄; 3, Isotype IgG₄; 4, unrelated IgG₄; 5-9: irrelevant, was repeated.

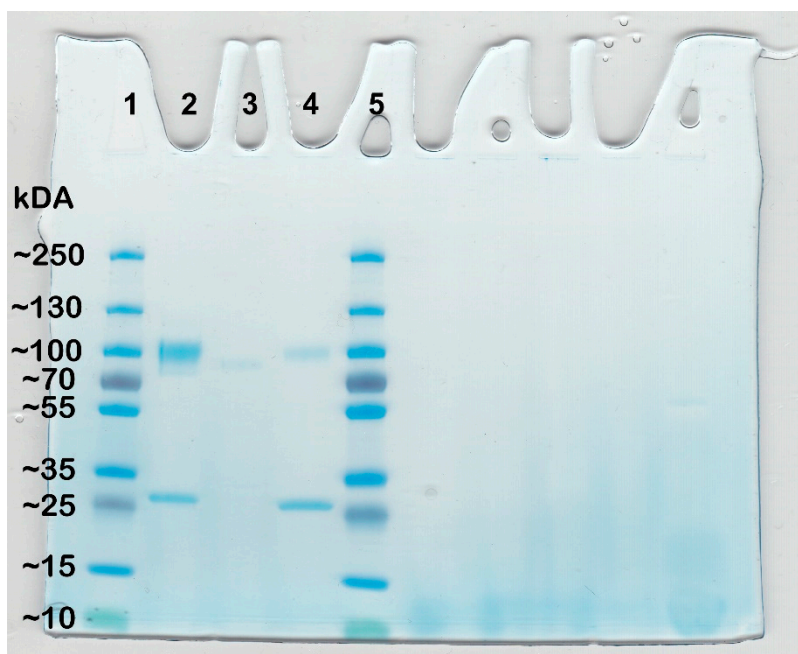


Figure S4. Uncropped gel image of SDS-PAGE, reducing conditions. 1, Marker; 2, M0418 IgE; 3, Isotype IgE; 4, unrelated IgE; 5, Marker.

8

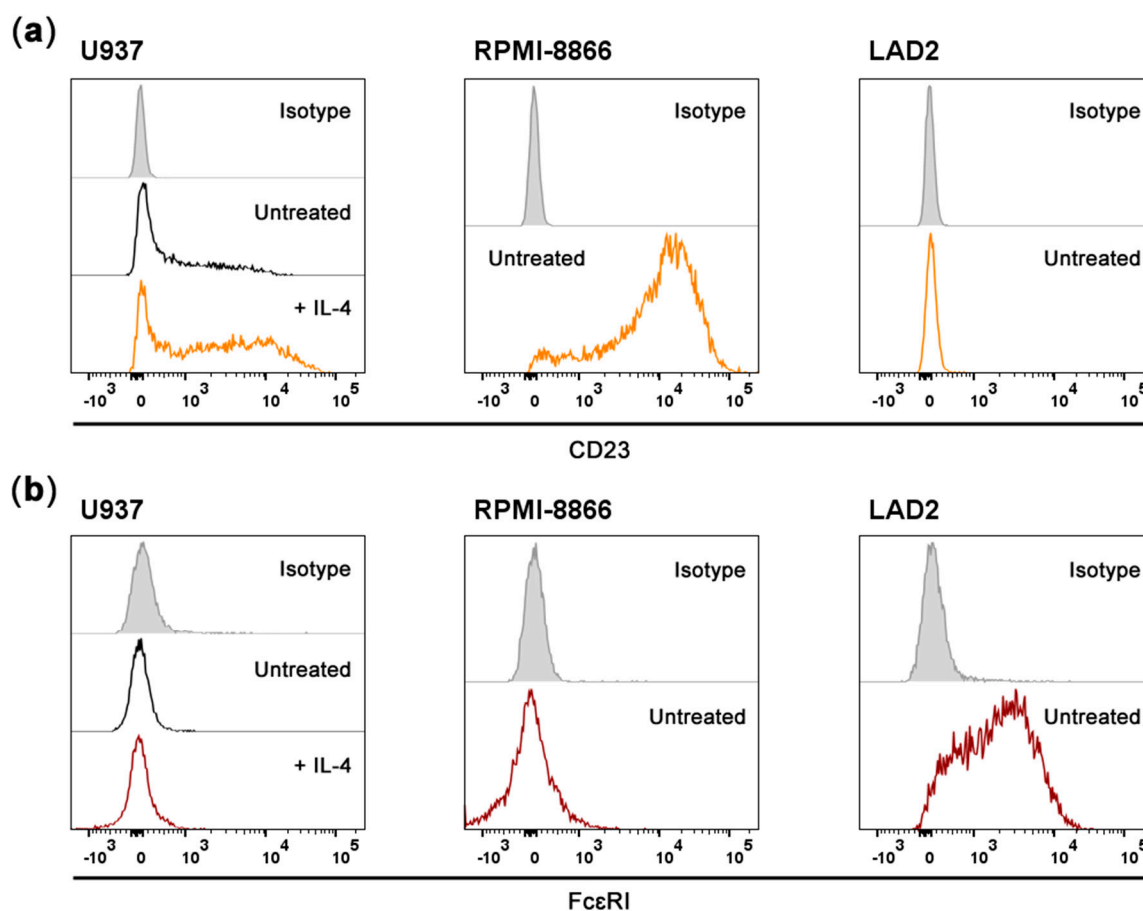
9 Supplementary Material – FcεRI and CD23 Expression of U937 and RPMI-8866 Cells
10

Figure S5. IgE receptor expression of model cell lines U937 and RPMI-8866. (a) U937 monocytes express a moderate level of the low-affinity receptor CD23, which is enhanced by priming with IL-4. RPMI-8866 cells express high levels of CD23, whereas the control mast cell line LAD2 is CD23-negative. (b) U937 monocytes and RPMI-8866 cells are high-affinity receptor FcεRI-negative, as compared to the control mast cell line LAD2.

11

12