

Table S1. The primer list used in qRT-PCR.

Gene Name	Gene ID	Primer	Sequence
Niemann-Pick disease, type C1 (NPC1)	4864	F	GCACCTTTTACCATCACTCCTG
		R	GGCCACAGACAATAGAGCAGT
ATP-binding cassette, sub-family A (ABC1), member 1 (ABCA1)	19	F	ACCCACCCTATGAACAACATGA
		R	GAGTCGGGTAACGGAAACAGG
trinucleotide repeat containing 6A (TNRC6A)	27327	F	AGCCACAAAATAACGGAGAGG
		R	CGACAAGTCACTTACAACAGCAT
SWI/SNF related, matrix associated, actin dependent regulator of chromatin, subfamily a, member 2 (SMARCA2)	6595	F	CACAGCCAAGGTTATATGTCACC
		R	TGCGGATCACCTGGGATGA
zinc finger protein 652 (ZNF652)	22834	F	AGAGAAAGTCAGCGTTACACAAA
		R	CGACCTCTGTAGTTCTGGGAG
ARP2 actin-related protein 2 homolog (ACTR2)	10097	F	GGCAGTTCTGACTTTGTACGC
		R	CCAGTCTCCTGGTAAGATGAGG
protein tyrosine phosphatase, receptor type, f polypeptide (PTPRF), interacting protein (liprin), alpha 1 (PPFIA1)	8500	F	AAAAGGTGAGAGAGCGATTACG
		R	TGTCCAGCACTCCATCTGTTA
keratin 10 (KRT10)	3858	F	TCCTACTTGGACAAAGTTCGGG
		R	CCCCTGATGTGAGTTGCCA
WD repeat and SOCS box containing 1 (WSB1)	26118	F	GGTGTCACTTCAAGAGACAAA
		R	AGTCAGGAGAGAATGCACAGC
fibrosin-like 1 (FBRSL1)	57666	F	CCCCTACTTCCGACATTCCAG
		R	AGACACCTTAGGCTGAAAAGC
lysosomal trafficking regulator (LYST)	1130	F	GCAACAGATTTTAACTACCGCT
		R	AACCTGACTAGACAGGGCACT
SUMO1/sentrin specific peptidase 7 (SEN7)	57337	F	GTTGACGAATGTCTATGGACG
		R	AATGAGTCTGATTGCACCTTGTT
heterogeneous nuclear ribonucleoprotein A2/B1 (HNRNPA2B1)	3181	F	ATTGATGGGAGAGTAGTTGAGCC
		R	AATTCGCCAACAAACAGCTT
U2AF homology motif (UHM) kinase 1 (UHMK1)	127933	F	ACGCTGTCTGTTGCTTGAAC
		R	GGCACAATGCTGTATCATCCAC
solute carrier family 25 (mitochondrial carrier; adenine	293	F	GCAACCTTGCCAACGTCATTC
		R	CCGCAAAGTACCTCCAGAACT

nucleotide translocator), member 6 (SLC25A6)			
integrin, alpha X (ITGAX)	3687	F	CTGCAAGGGTTTACATACACGG
		R	GAATTTTGGCGGCATCCCTAC
eukaryotic translation initiation factor 5 (EIF5)	1983	F	TTAATCGGCCTCCAACGTATCC
		R	CTTGCAGCTTATTCGCCTCAT
AF4/FMR2 family, member 4 (AFF4)	27125	F	ACCGTGAAGACCGGAATGTG
		R	GAGAGGAGAGCTAGGTGGGAA
peroxisome proliferator-activated receptor gamma, coactivator-related 1 (PPRC1)	23082	F	GAGCAGGTTATCTCTGGAGGA
		R	AGCAGCTCCGAATCAGGAATG
zinc finger, AN1-type domain 6 (ZFAND6)	54469	F	AAGTGCCTATGCTTTGTTCCAC
		R	ATGCCATTTGTACGAGGGTTT

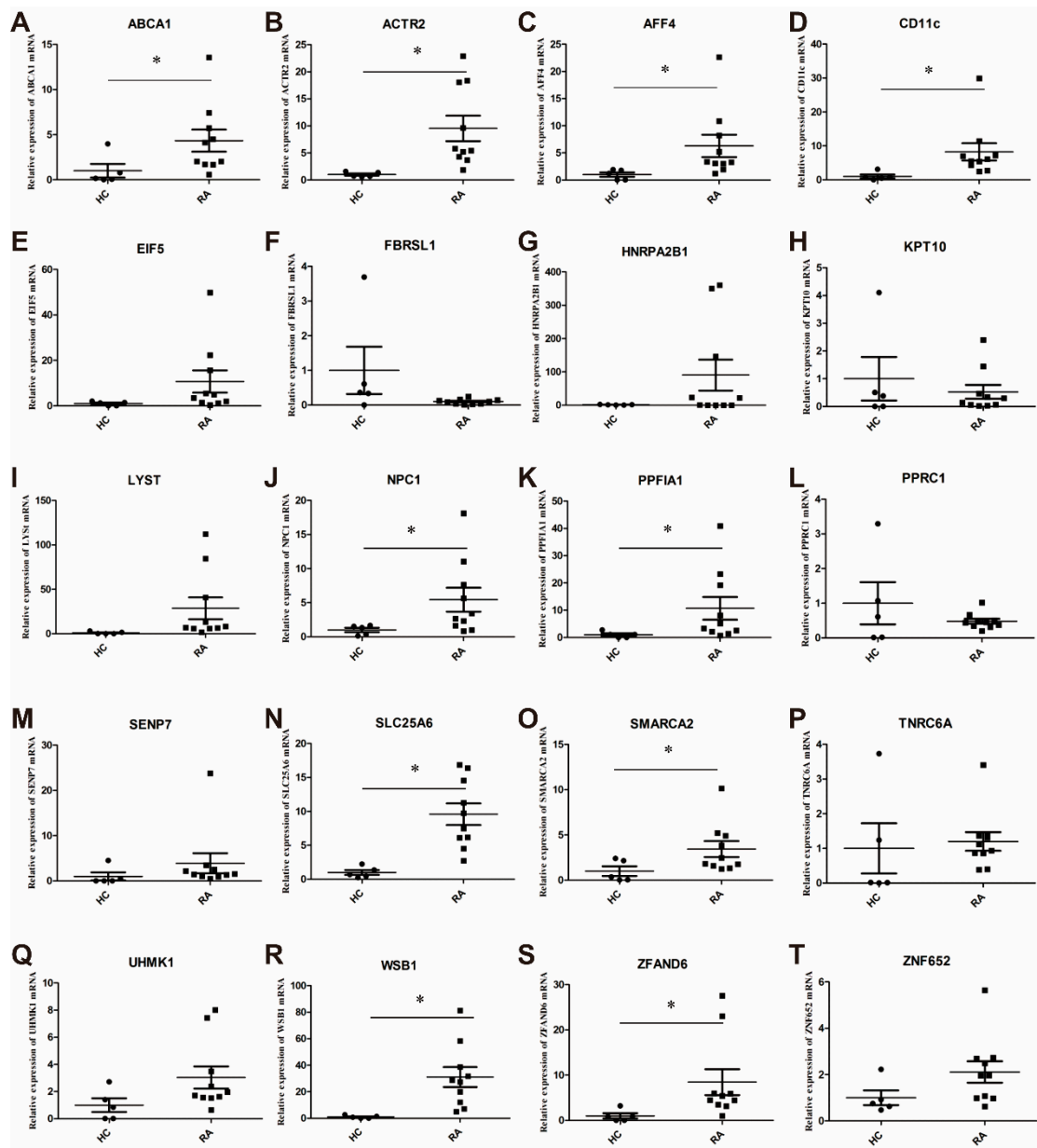


Figure S1. The mRNA expression levels between RA patients and with health control (HC) in pilot study. Value are the mean \pm SEM. * $p < 0.05$.

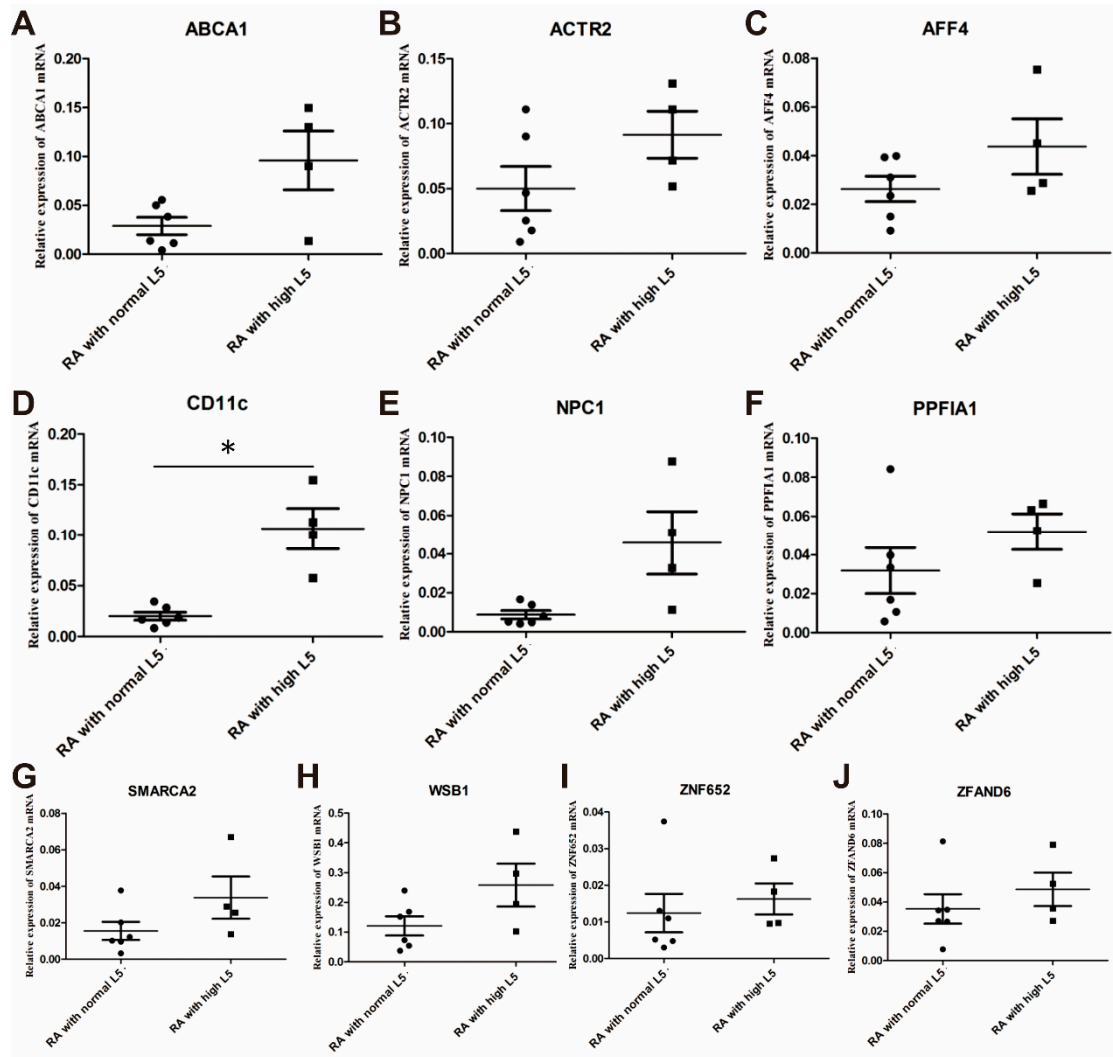


Figure S2. The mRNA expression levels between RA patients with high L5% and with normal L5% in pilot study. Value are the mean ± SEM. * $p < 0.05$.

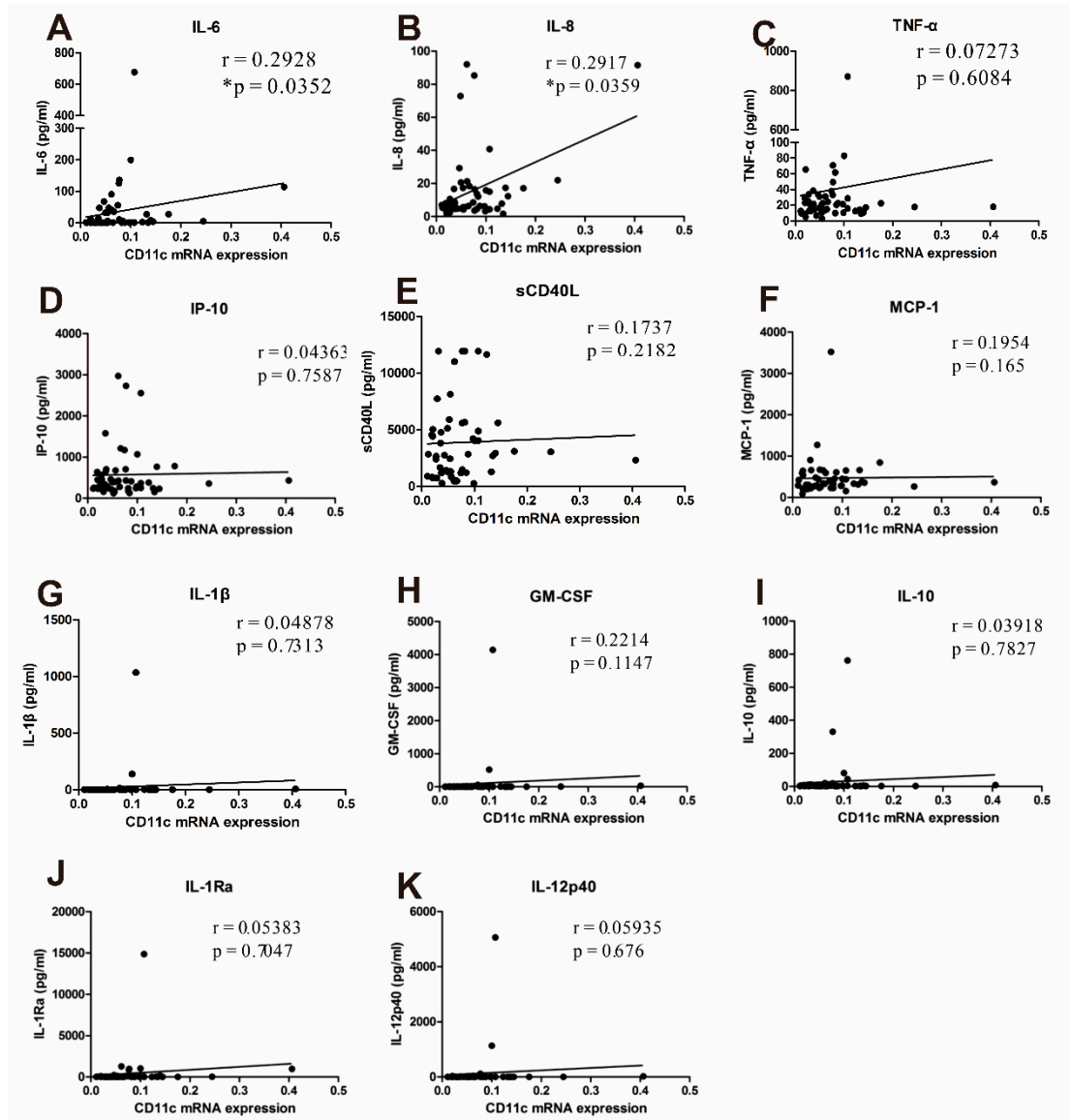


Figure S3. Correlation between the CD11c expression and plasma levels of inflammatory mediators in RA patients. The correlation coefficient was calculated using the nonparametric Spearman's rank correlation test. $*p < 0.05$.