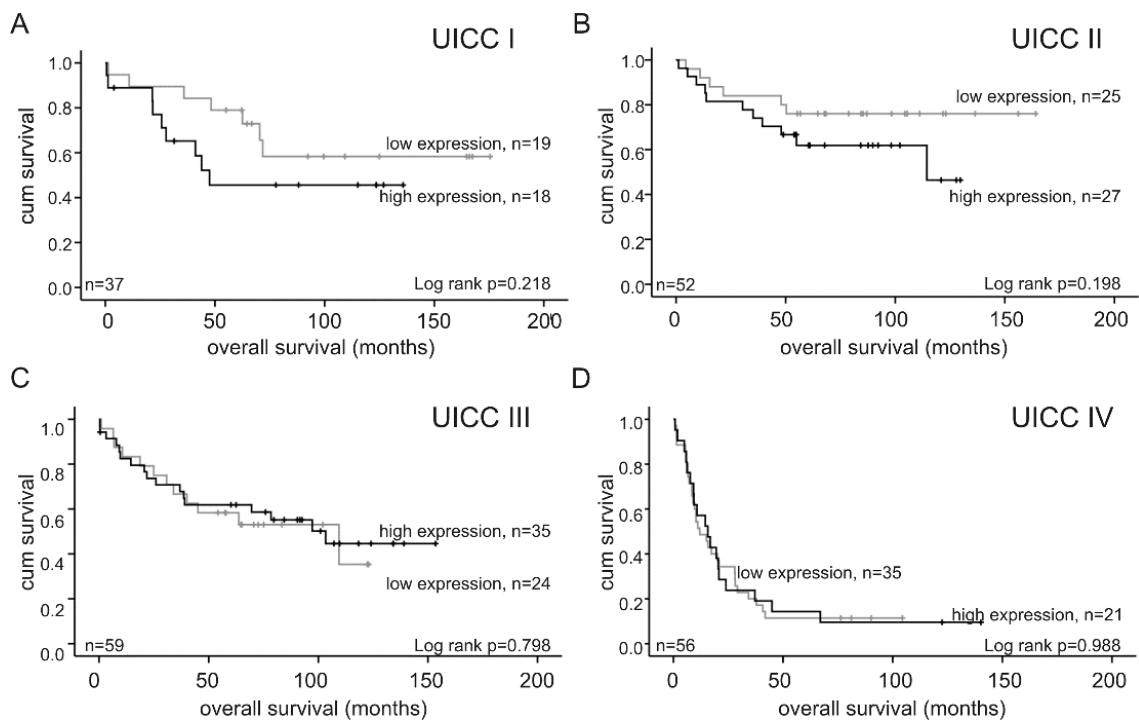
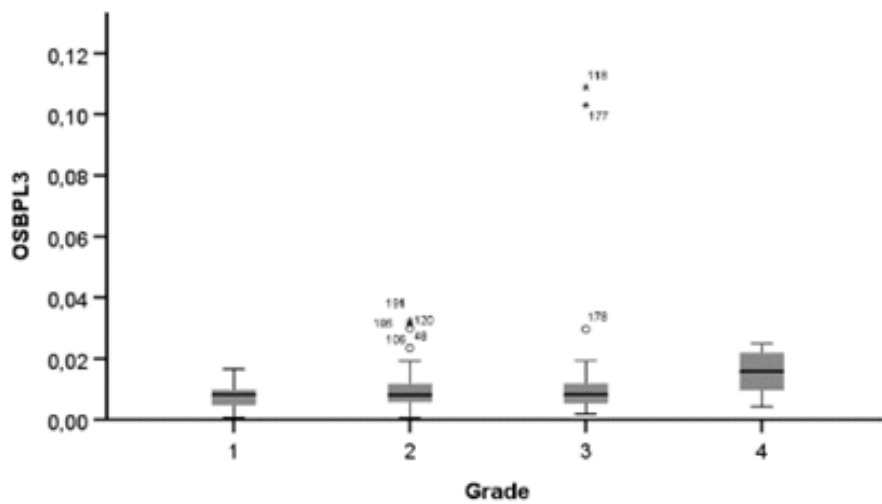
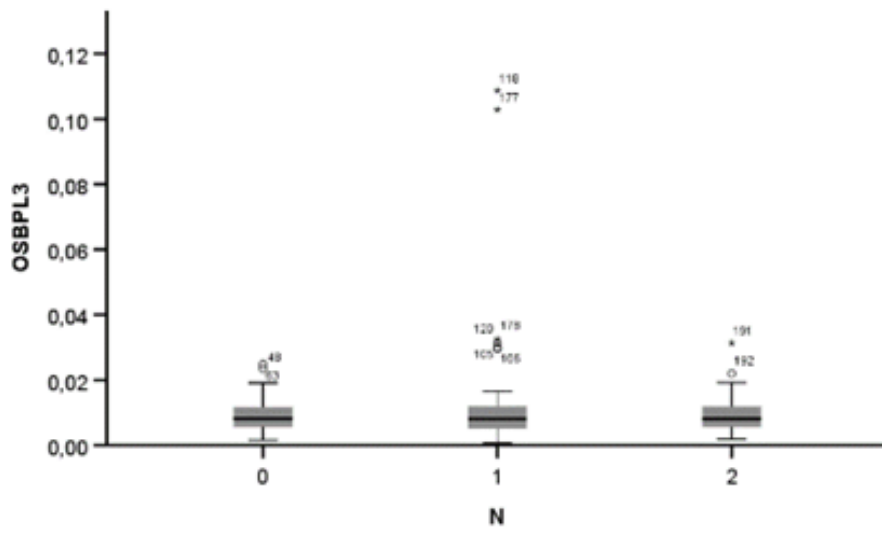
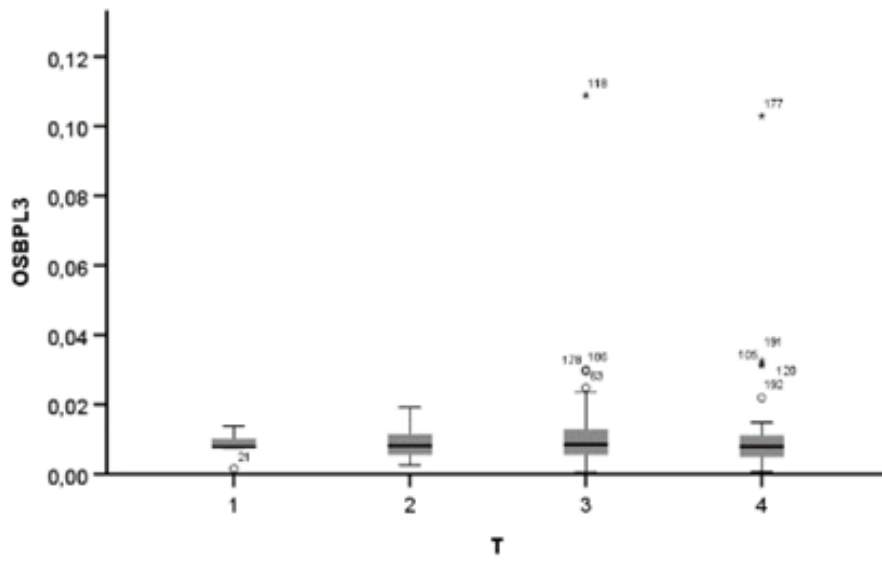


Supplemental Figure S1: *ORP3* mRNA levels of grade 2 patients did not significantly correlate with patient's survival. No predication for patient's survival in correlation to *ORP3* mRNA levels was possible for patients with grade 1 and grade 4 tumors due to low group numbers (n= 12 and n=5, respectively).



Supplemental Figure S2: Impact of *ORP3* RNA expression on prognosis of the different UICC subgroups of colon cancer patients. Kaplan-Meier plot display the overall survival of patients with UICC I, UICC II, UICC III, and UICC IV tumors of colon cancer patients, divided according to the relative *ORP3* RNA expression quantified by qPCR using specific primers. *HPRT* gene served as reference gene. Graphs were created using IBM SPSS Statistics 25; * $p \leq 0.05$.



Supplemental Figure S3: The figure shows the box plots representing average expression of *ORP3* in separate groups of N0-N2, T1-T4 and grades 1-4.

Supplementary Table S1: Output of the cox proportional-hazards analysis for the whole cohort. Results for the code `coxph(formula = Surv(Time, Outcome) ~ factor(`Expression level of ORP3`) + Sex + Grade + factor(Localization) + UICC + `Invaded Lymph nodes` + Metastasis + Age, data = Cohort)`. Significance levels are shown as follows: * indicates $p < 0.05$, ** indicates $p < 0.01$, *** indicates $p < 0.001$.

	coef	exp(coef)	se(coef)	z	Pr(> z)	Significance
Factor `Expression level of ORP3' low expression	-0,1728	0,8413	0,1955	-0,884	0,3768	
Sex Male	0,3068	1,3591	0,2044	1,501	0,1333	
Grade	0,1646	1,1789	0,1809	0,91	0,3629	
Factor (Localization) descendens	0,3385	1,4029	0,2051	1,651	0,0988	.
UICC	-0,115	0,8914	0,2464	-0,467	0,6408	
Invaded Lymph nodes	0,5565	1,7446	0,3496	1,592	0,1114	
Metastasis	1,6488	5,2008	0,4049	4,072	4,66e-05	***
Age>70	0,9938	2,7016	0,2077	4,784	1,72e-06	***
	exp(coef)	exp(-coef)	lower .95	upper .95		
Factor `Expression level of ORP3' low expression	0,8413	1,1886	0,5735	1,234		
Sex Male	1,3591	0,7358	0,9105	2,029		
Grade	1,1789	0,8482	0,827	1,681		
Factor (Localization) descendens	1,4029	0,7128	0,9386	2,097		
UICC	0,8914	1,1219	0,5499	1,445		
Invaded Lymph nodes	1,7446	0,5732	0,8792	3,462		
Metastasis	5,2008	0,1923	2,3518	11,501		
Age>70	2,7016	0,3702	1,798	4,059		

Supplementary Table S2: Output of the cox proportional-hazards analysis of patients with a grade 3 tumor. Results for the code: `coxph(formula = Surv(Time, Outcome) ~ factor('Expression level of ORP3') + Sex + factor(Localization) + UICC + 'Invaded Lymph nodes' + Metastasis + Age, data = Grade3)`. Significance levels are shown as follows: * indicates $p < 0.05$, ** indicates $p < 0.01$, *** indicates $p < 0.001$.

	coef	exp(coef)	se(coef)	z	Pr(> z)	Significance
Factor 'Expression level of ORP3' low expression	1,1192	3,06242	0,4567	2,451	0,01426	*
Sex Male	-0,03987	0,96091	0,42348	-0,094	0,92499	
Grade	1,08561	2,96125	0,48022	2,261	0,02378	*
Factor (Localization) descendens	-0,04767	0,95345	0,84907	-0,056	0,95523	
UICC	1,03609	2,81818	1,1974	0,865	0,38688	
Invaded Lymph nodes	2,29958	9,97	1,10742	2,077	0,03785	*
Metastasis	1,22645	3,4091	0,46529	2,636	0,00839	**
Age>70	1,1192	3,06242	0,4567	2,451	0,01426	*
	exp(coef)	exp(-coef)	lower .95	upper .95		
Factor 'Expression level of ORP3' low expression	3,0624	0,3265	1,2512	7,496		
Sex Male	0,9609	1,0407	0,419	2,204		
Grade	2,9612	0,3377	1,1553	7,59		
Factor (Localization) descendens	0,9534	1,0488	0,1805	5,035		
UICC	2,8182	0,3548	0,2696	29,458		
Invaded Lymph nodes	9,97	0,1003	1,1378	87,364		
Metastasis	3,4091	0,2933	1,3696	8,486		
Age>70	3,0624	0,3265	1,2512	7,496		