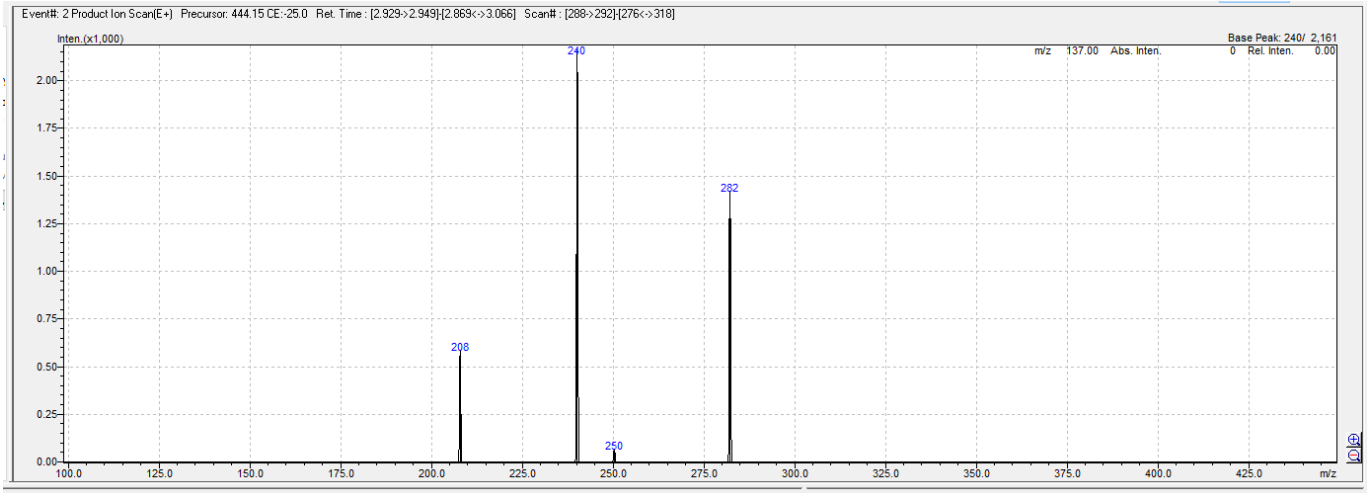


A, FULL MASS SPECTRUM OF m/z 444.14 CE -25 eV with fragmentation ion m/z 208, 240, 282, and 250.



Mass Table

of Peaks: 4

Raw Spectrum: [2.929->2.949],(scan:[288->292])

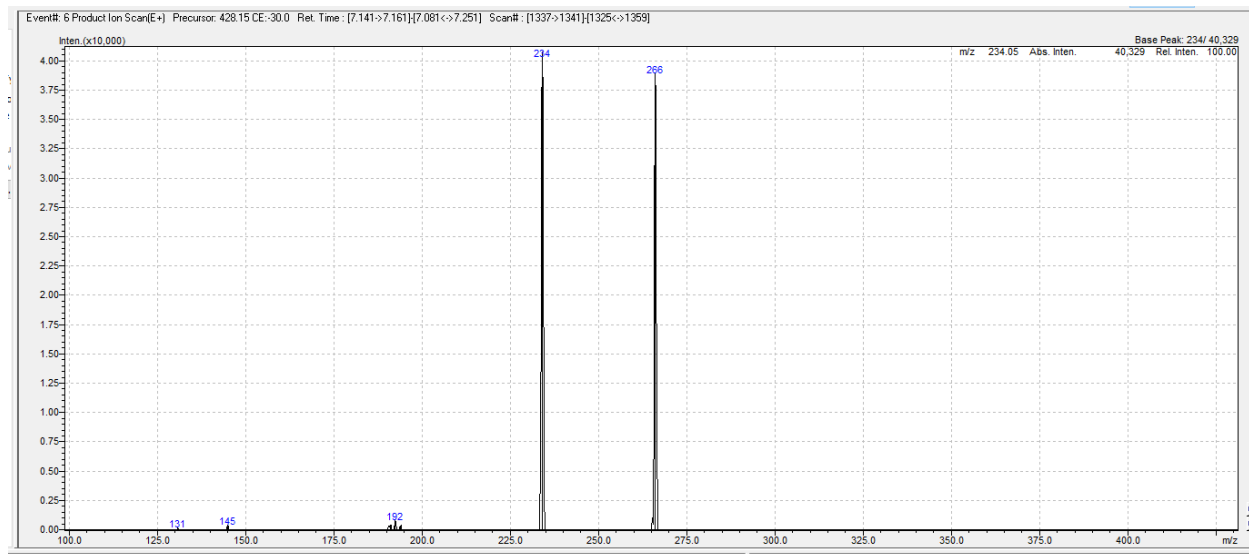
Background: [2.869<->3.066],(scan:[276<->318])

Base Peak: m/z 240.10 (Inten : 2,161)

m/z, Abs. Rel. Intensity,

207.90 ,	582
240.10 ,	2161
250.30 ,	64
282.15 ,	1416

B, FULL MASS SPECTRUM OF 428.14 CE -25 eV with fragmentation ion m/z 234, and 266



Mass Table

Mass Table

of Peaks: 8

Raw Spectrum: [7.131->7.151],(scan:[1335->1339])

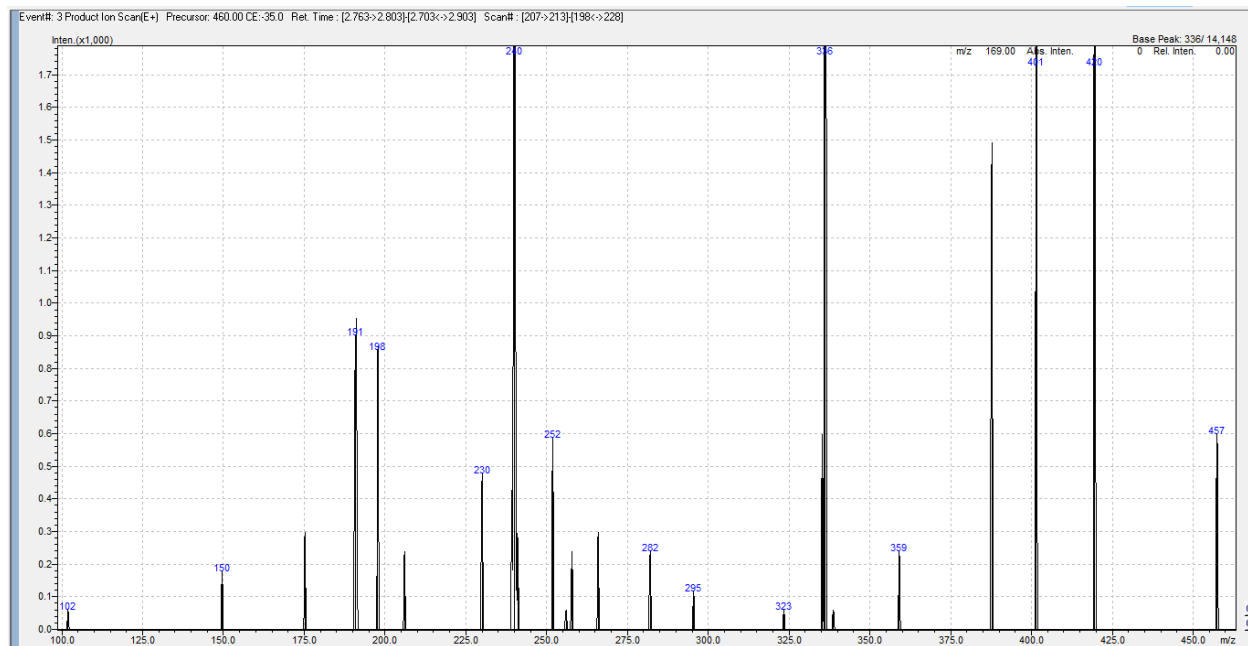
Background: [7.061->7.281],(scan:[1321->1365])

Base Peak: m/z 234.05 (Inten : 38,423)

m/z, Abs. Rel. Intensity,

130.80,	370
144.95,	418
148.50,	185
191.05,	333
192.40,	247
234.05,	38423
266.10,	36191
315.40,	123

C, FULL MASS SPECTRUM OF 460.14 CE -35 eV with fragmentation ion m/z 240, 198, 191 and 282



Mass Table

of Peaks: 24

Raw Spectrum: [2.763->2.803],(scan:[207->213])

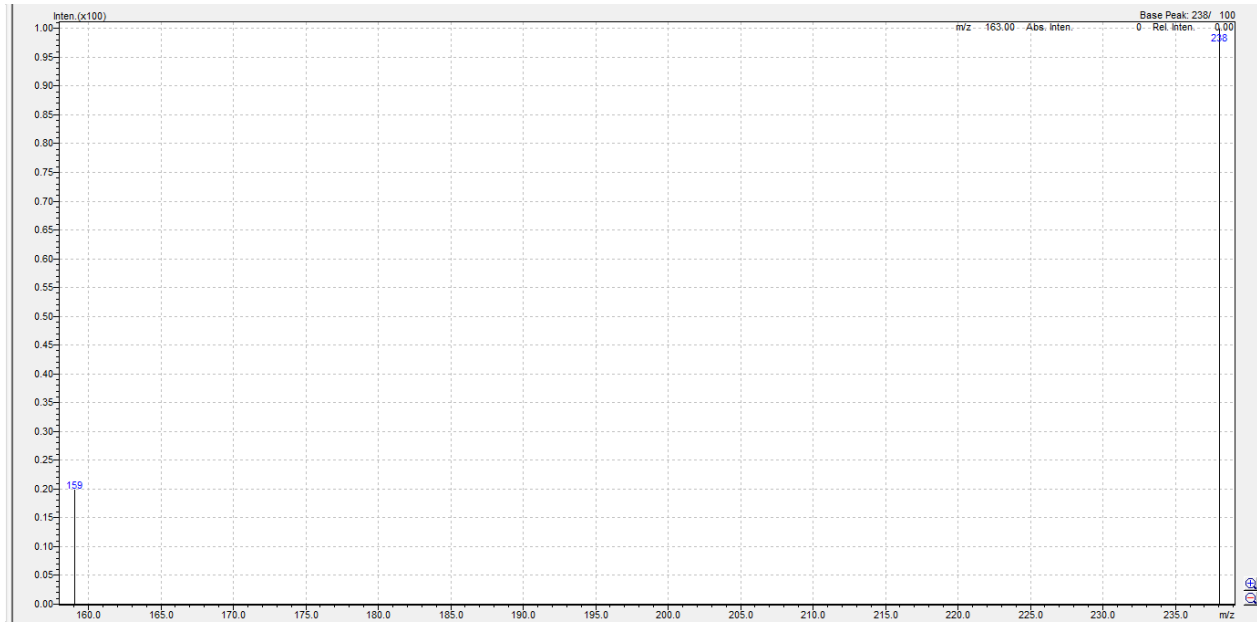
Background: [2.703->2.903],(scan:[198->228])

Base Peak: m/z 336.20 (Inten : 14,148)

m/z, Abs. Rel. Intensity,

101.90,	59	256.00,	59
149.60,	178	257.80,	238
175.20,	298	265.90,	298
190.95,	900	282.00,	238
197.75,	855	295.45,	114
206.00,	238	323.40,	59
230.00,	477	335.30,	596
240.05,	2591	336.20,	14148
241.05,	283	338.70,	59
251.90,	585	359.10,	238

D, FULL MASS SPECTRUM OF 314.14 CE -25 eV with fragmentation ion m/z 238, 159



Mass Table

Mass Table

of Peaks: 2

Raw Spectrum: [2.885],(scan:[103])

Background: No Background Spectrum

Base Peak: m/z 238.05 (Inten : 100)

m/z , Abs. Rel. Intensity,

159.05,	20
238.05,	100

< >

E, FULL MASS SPECTRUM OF 370.14 CE -30 eV with fragmentation ion m/z 208, 166



Mass Table

of Peaks: 2

Raw Spectrum: [4.674->4.721],(scan:[318->324])

Background: [4.557<->4.861],(scan:[303<->342])

Base Peak: m/z 208.10 (Inten : 3,787)

m/z, Abs. Rel. Intensity,

166.05	198
208.10	3787