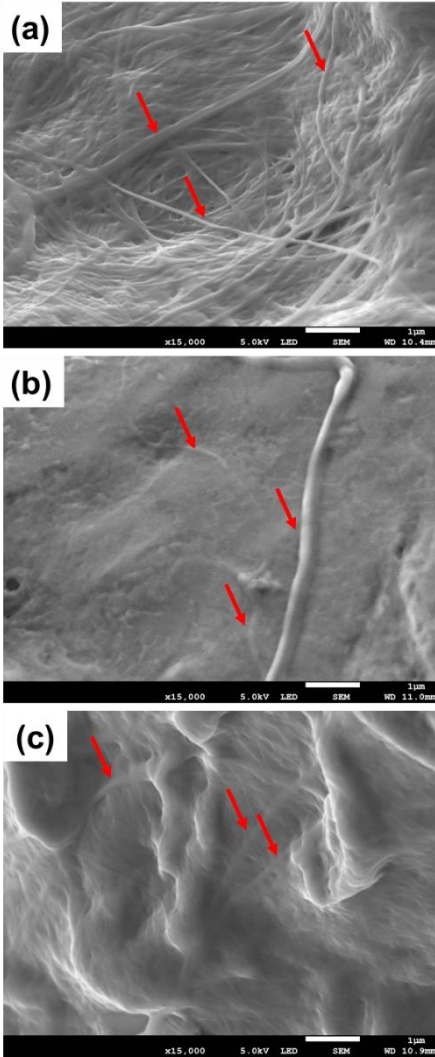


Supplementary data



**Figure S1.** SEM images of (a) Ti\_Col, (b) Ti\_Col\_low and (c) Ti\_Col\_high coatings. Ti: titanium alloy Ti6Al4V; Ti\_Col: collagen-coated Ti; Ti\_Col\_low: collagen and low PG concentration-coated Ti; Ti\_Col\_high: collagen and high PG concentration-coated Ti (magnification: x15000; scale bar: 1 μm). Red arrows indicate collagen fibrils.