

Figure S1.

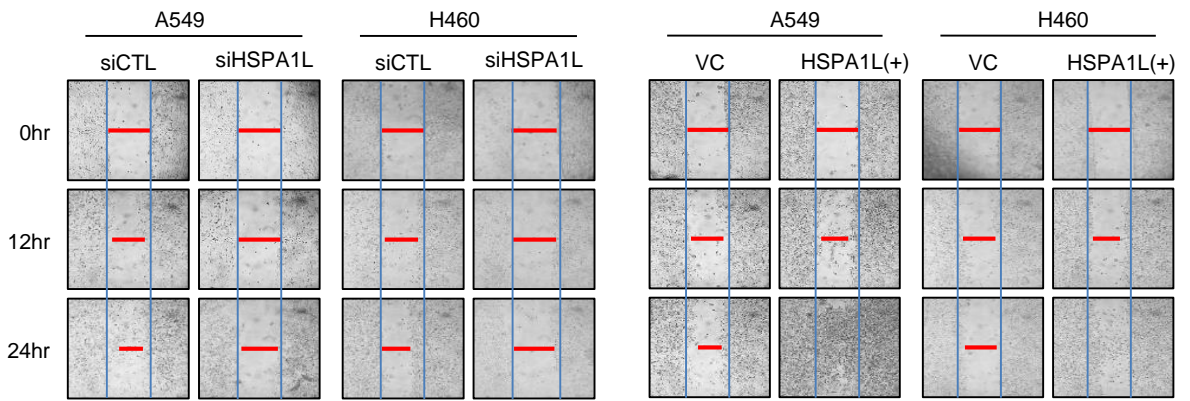


Figure S1. Wound-healing assay of A549 and H460 lung cancer cells transfected with siRNA targeting HSPA1L and pcDNA-HSPA1L.

Figure S2.

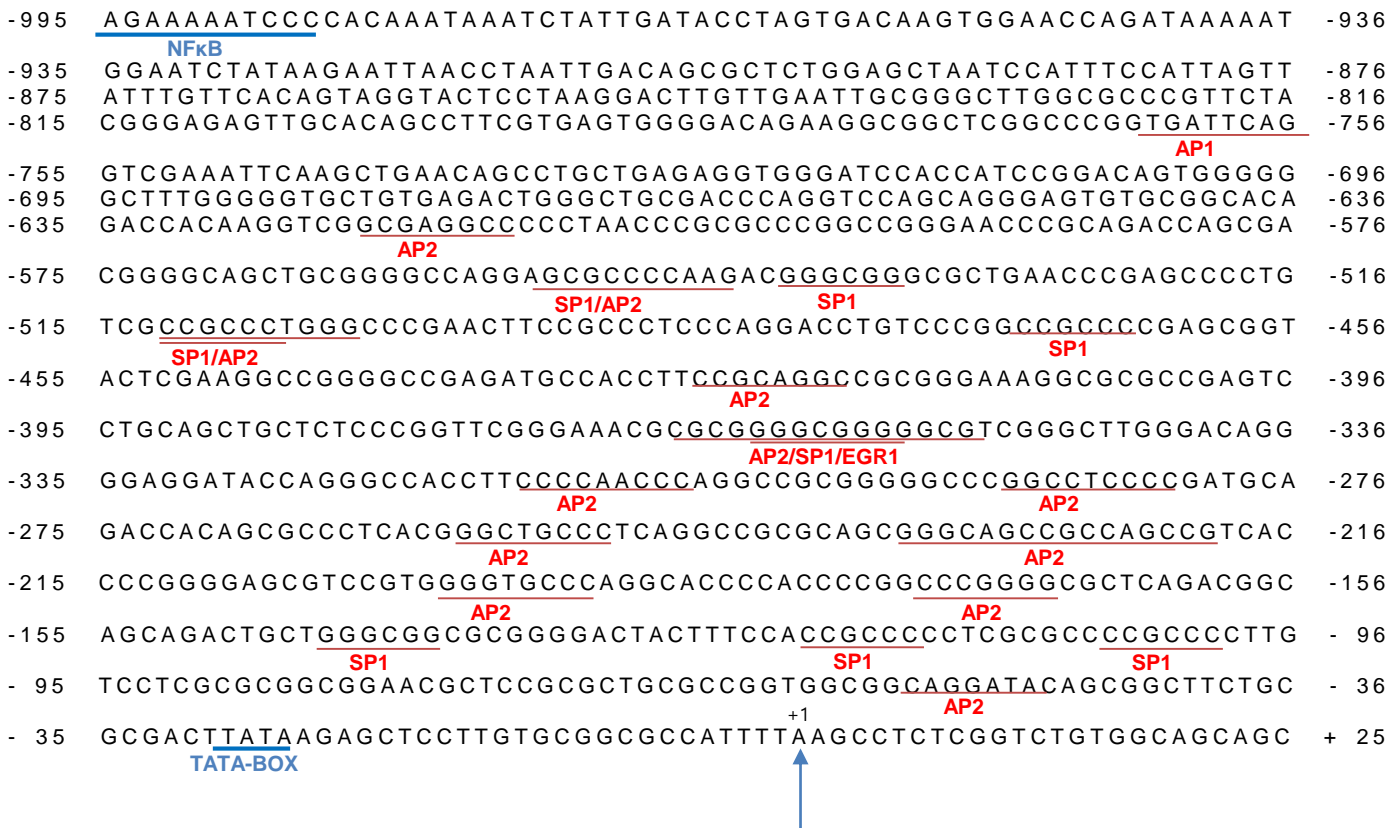


Figure S2. Nucleotide sequence of the β -catenin promoter site. The transcriptional start site (TSS) is indicated by a vertical arrow and referred to as position +1. The putative TATA-box and other element names are given below the sequences.

Figure S3.



Figure S3. Nucleotide sequence of the four different predicted specific promoter regions to which HSPA1L binds in β -catenin. Promoter primer sequences are listed in Table1.