

Regenerative response of degenerate human nucleus pulposus cells to GDF6 stimulation

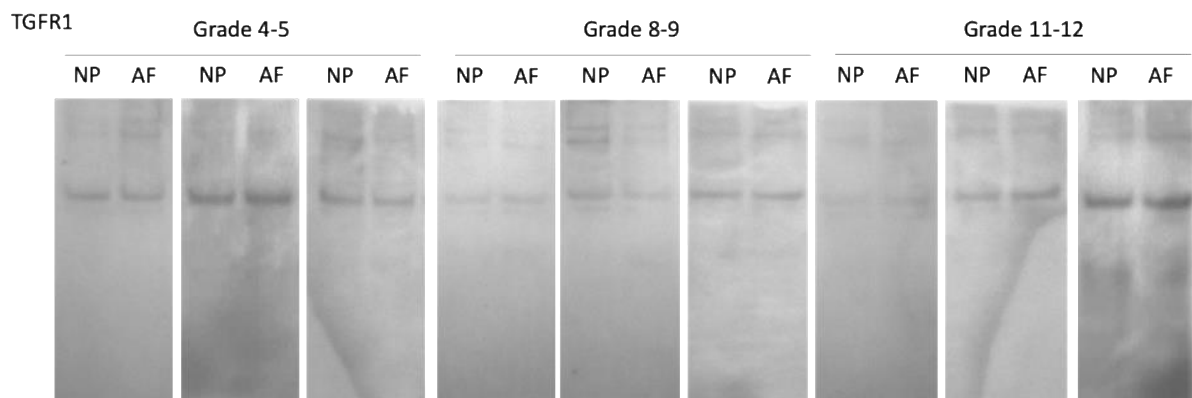
Tom Hodgkinson¹, Hamish T J Gilbert¹, Tej Pandya¹, Ashish Diwan², Judith A. Hoyland^{1,3} and Stephen M. Richardson^{1*}

¹ Division of Cell Matrix Biology and Regenerative Medicine, School of Biological Sciences, Faculty of Biology, Medicine and Health, University of Manchester, Oxford Road, Manchester M13 9PT, UK.

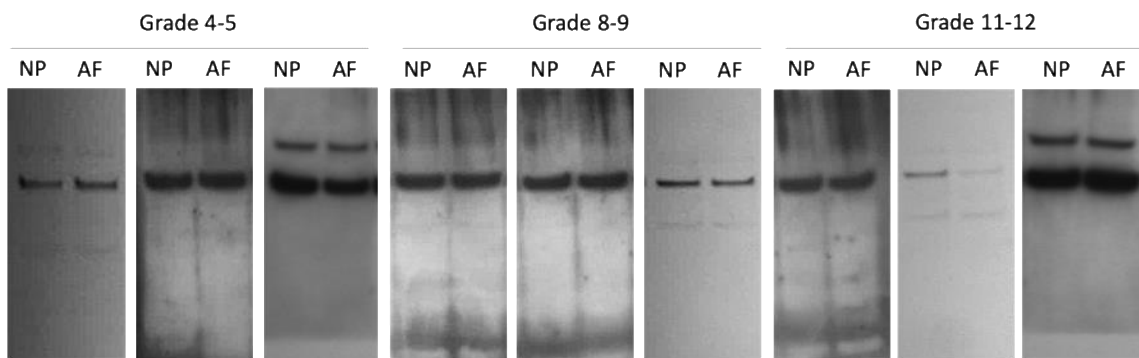
² St George & Sutherland Clinical School, University of New South Wales, Sydney, Australia.

³ NIHR Manchester Biomedical Research Centre, Central Manchester Foundation Trust, Manchester Academic Health Science Centre, Manchester, United Kingdom.

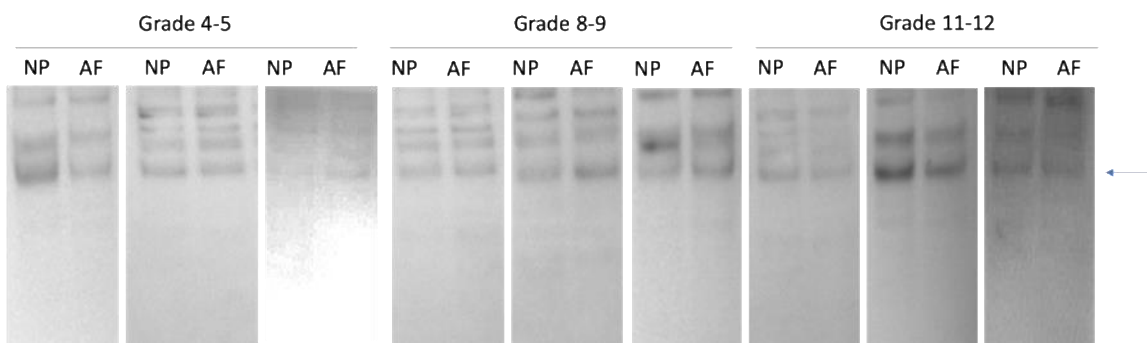
Original uncropped western blots



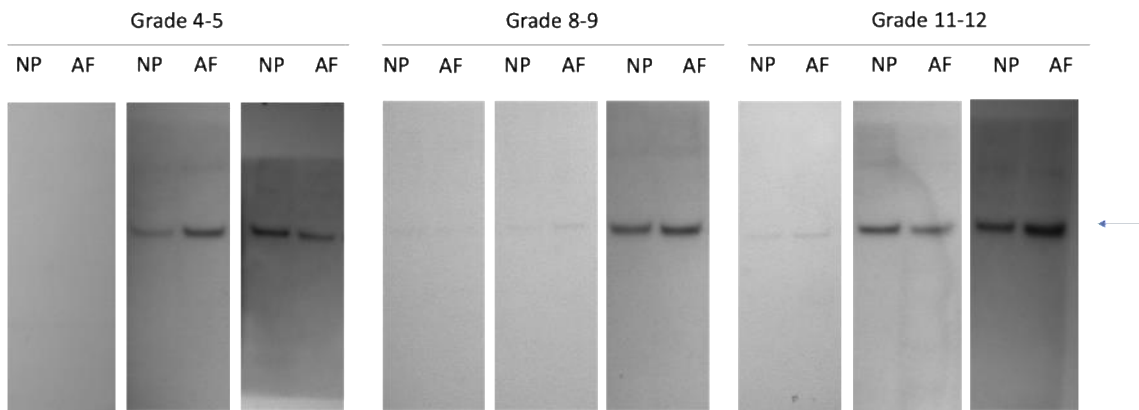
BMPR1A



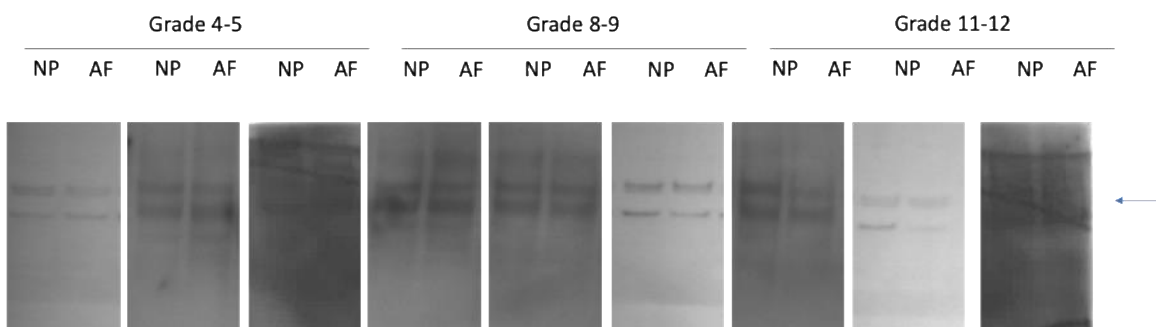
BMPR1B



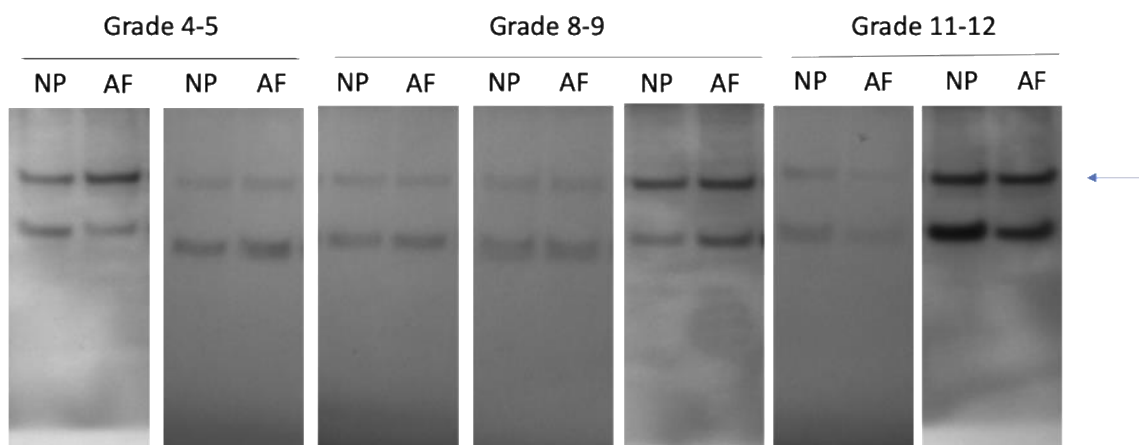
ACVR1A



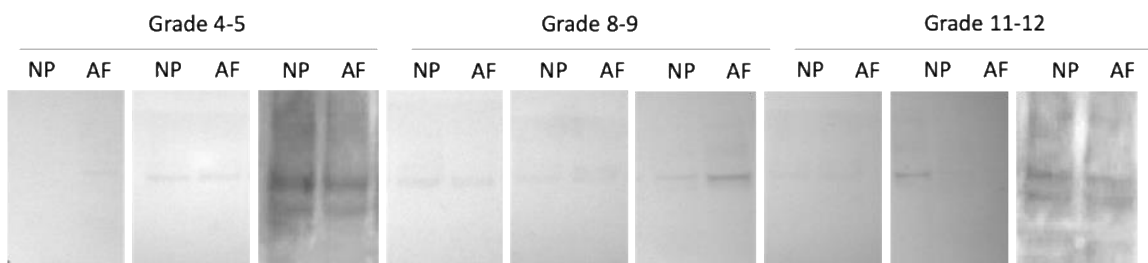
ACVR1B



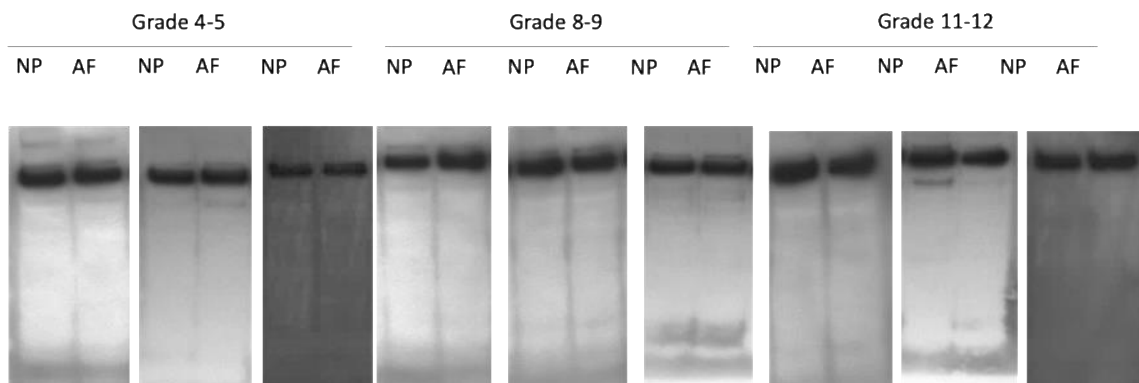
ACVR1C



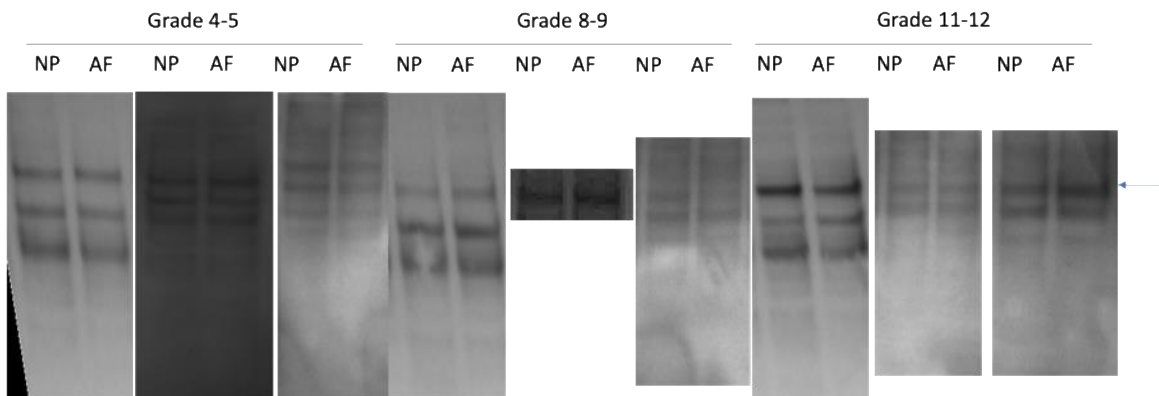
TGFRII



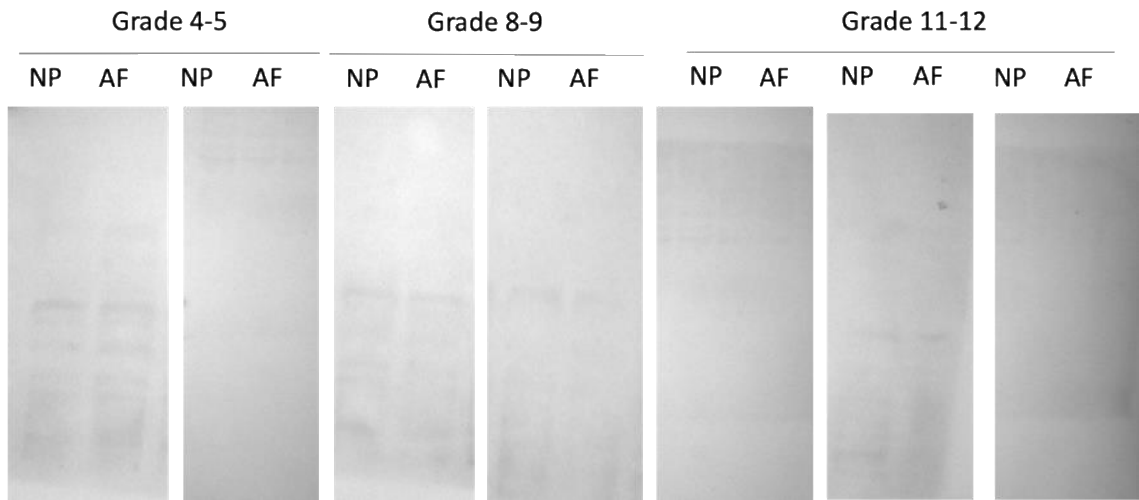
BMPRII



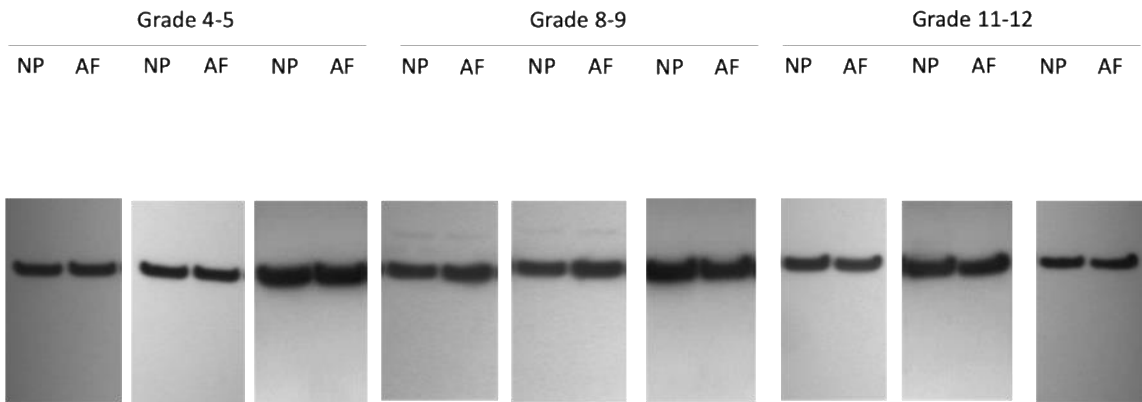
ACVRIIA



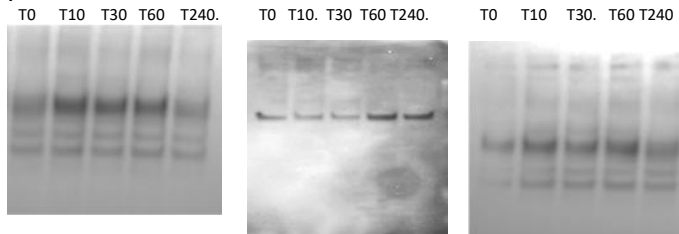
ACVRIIB



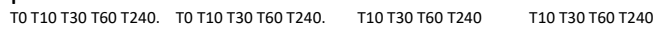
GAPDH

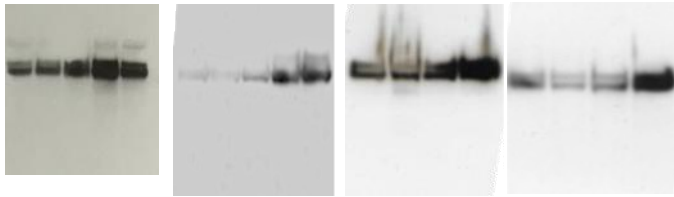


pSMAD



p-ERK





pp38

T0 T10 T30 T60 T240. T0 T10 T30 T60 T240. T0 T10 T30 T60 T240. T0 T10 T30 T60 T240



GAPDH

T0 T10 T30 T60 T240. T0 T10 T30 T60 T240. T0 T10 T30 T60 T240. T0 T10 T30 T60 T240

