

Strain-Dependent Prion Infection in Mice Expressing Prion Protein with Deletion of Central Residues 91–106

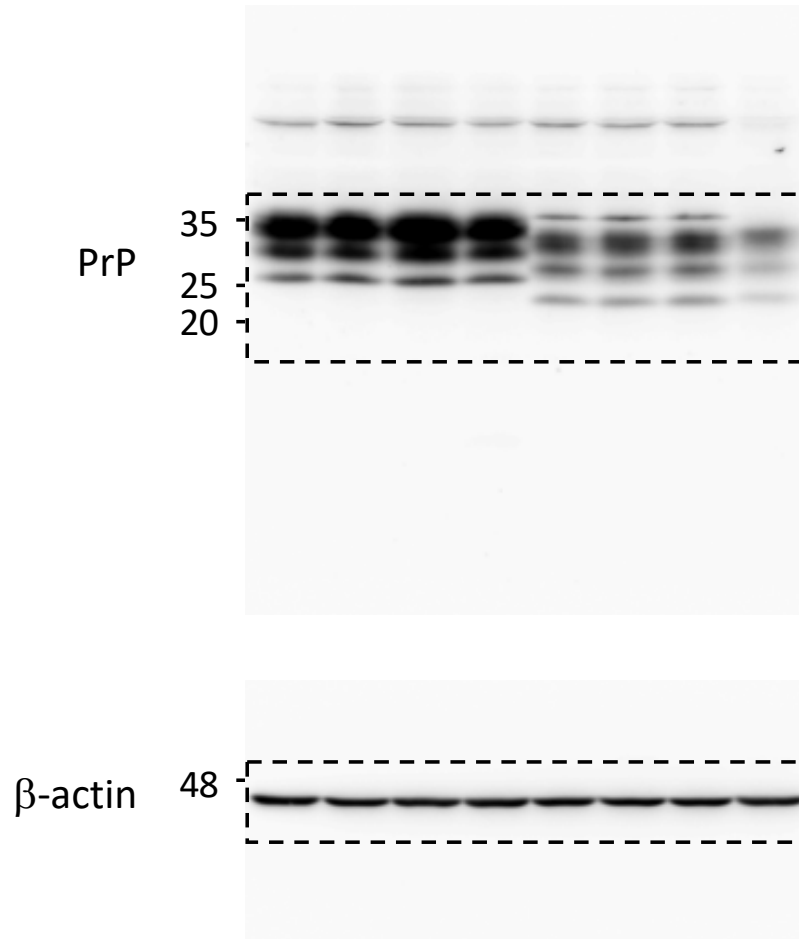


Figure S1. Original, uncropped and unadjusted images of Figure 1B.

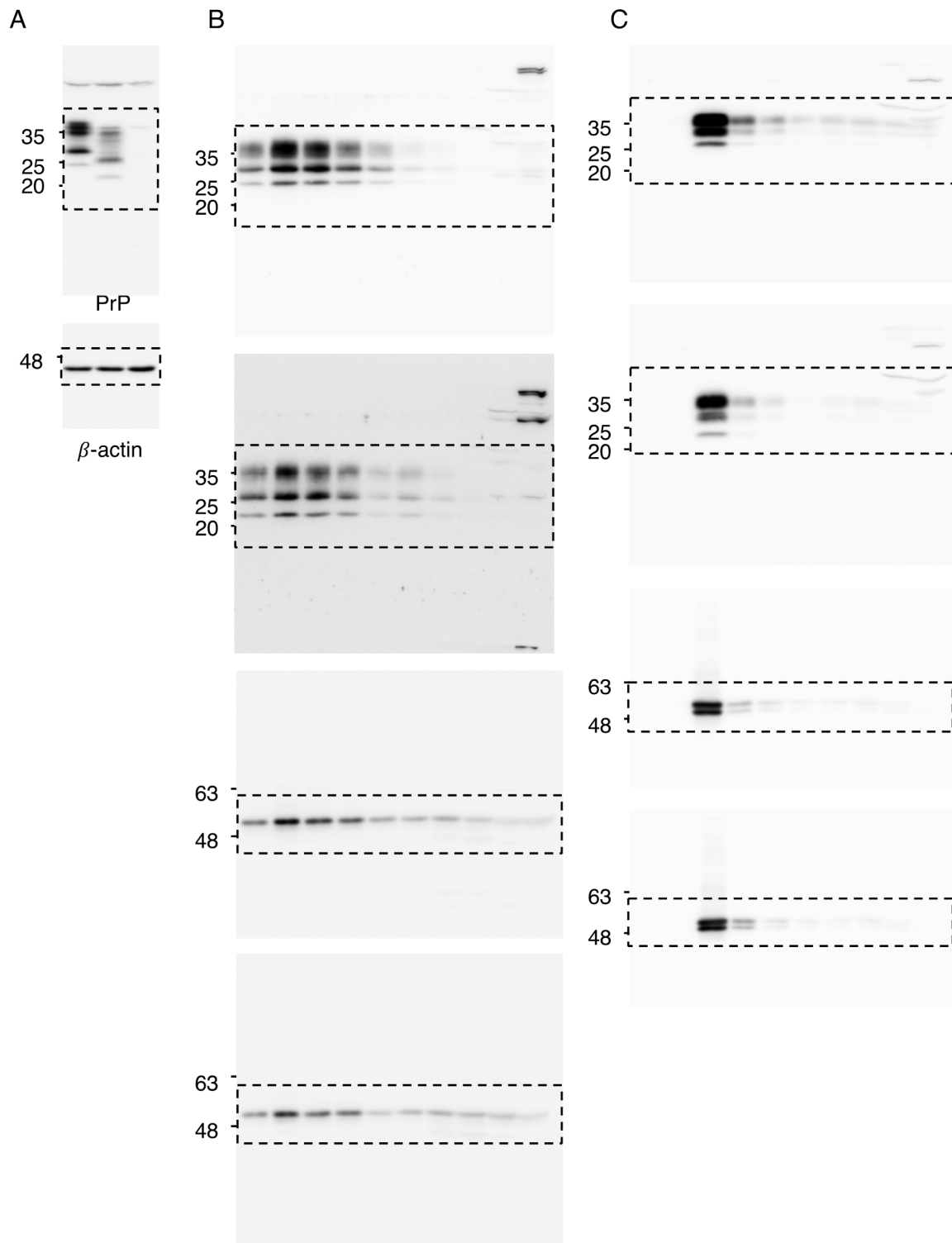


Figure S2. (A) Original, uncropped and unadjusted images of Figure 2A. (B) Original, uncropped and unadjusted images of Figure 2C. (C) Original, uncropped and unadjusted images of Figure 2D.

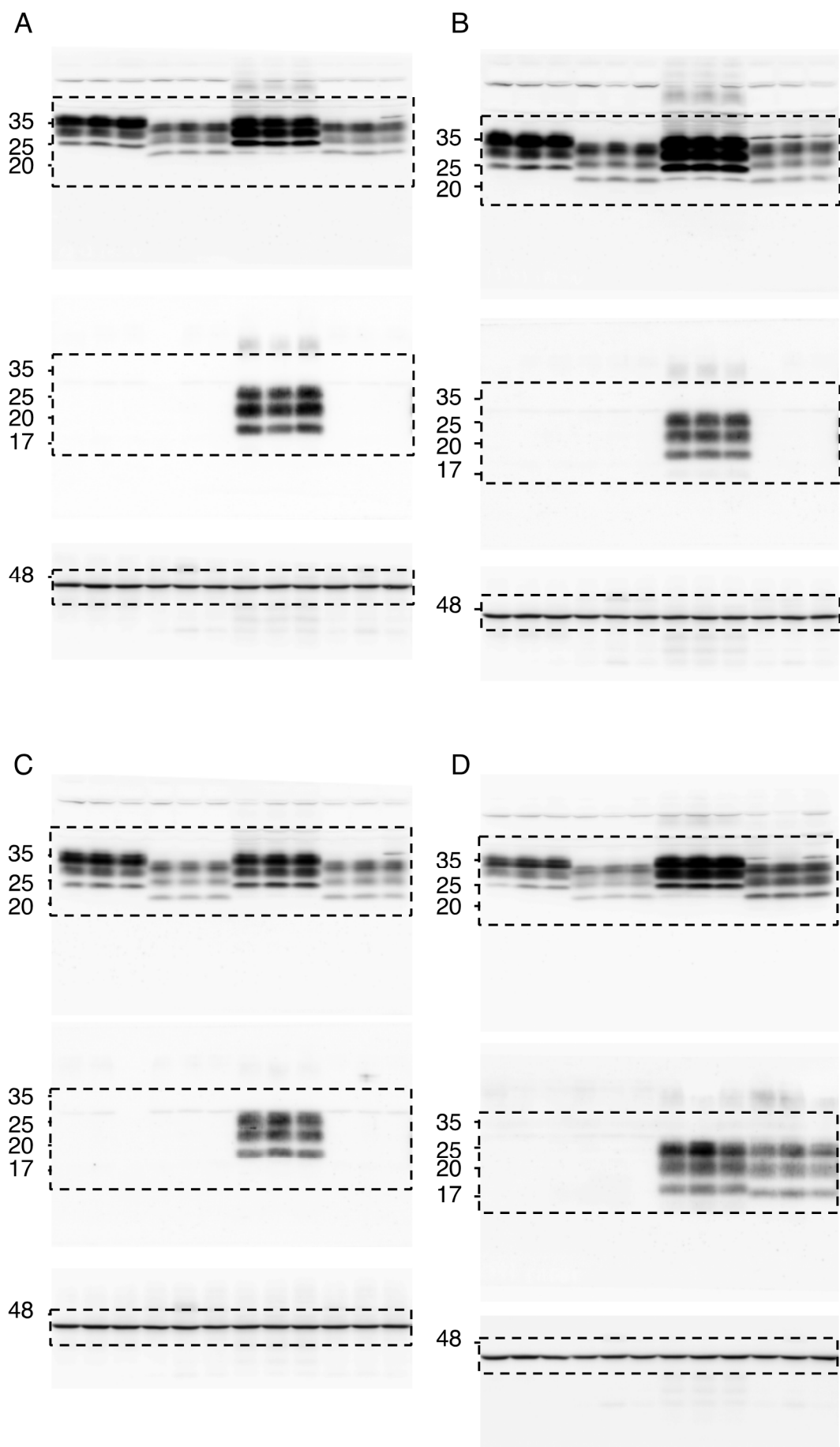


Figure S3. (A–D) Original, uncropped and unadjusted images of Figure 3A–D.

B

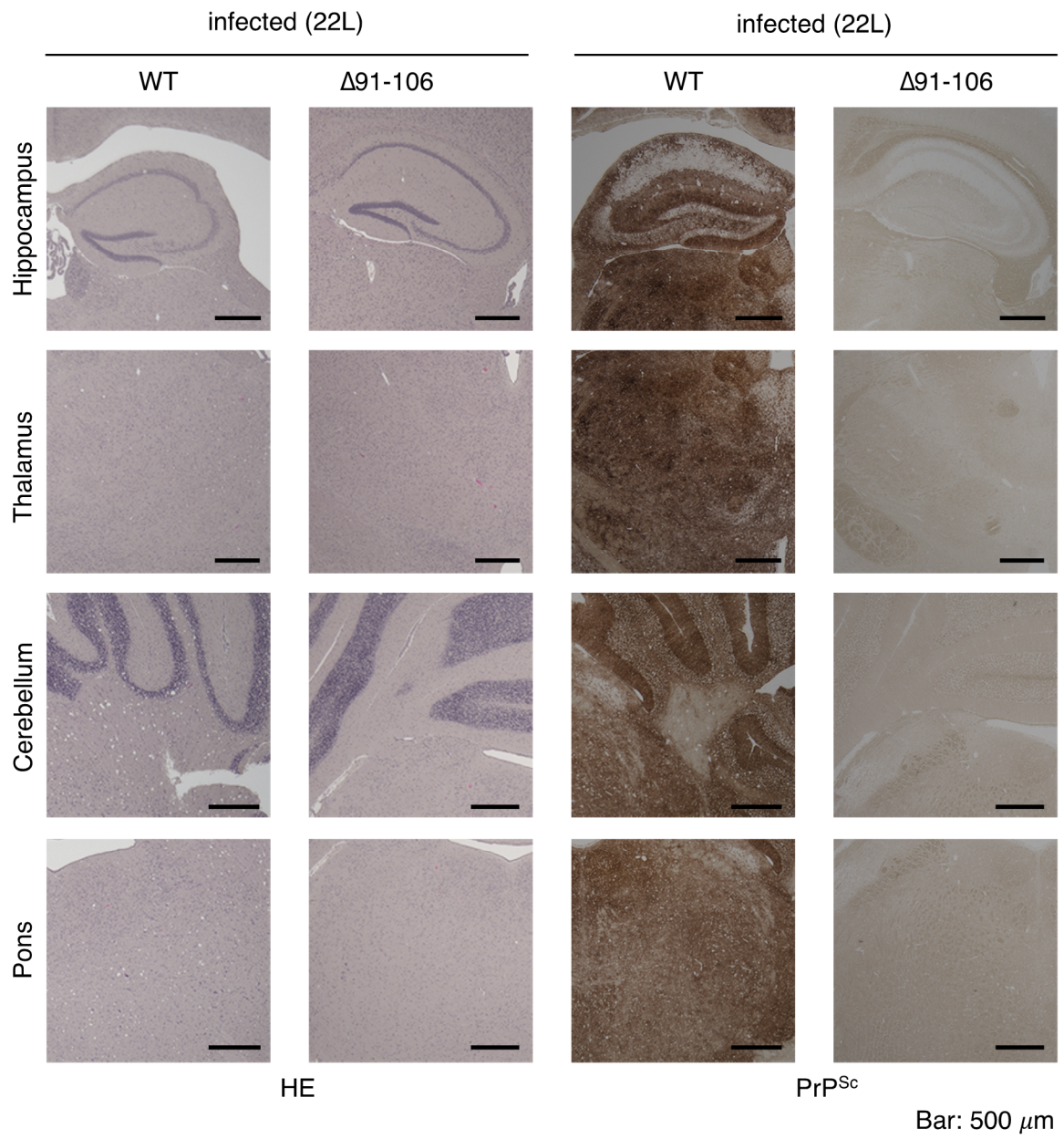


Figure S4. Cont.

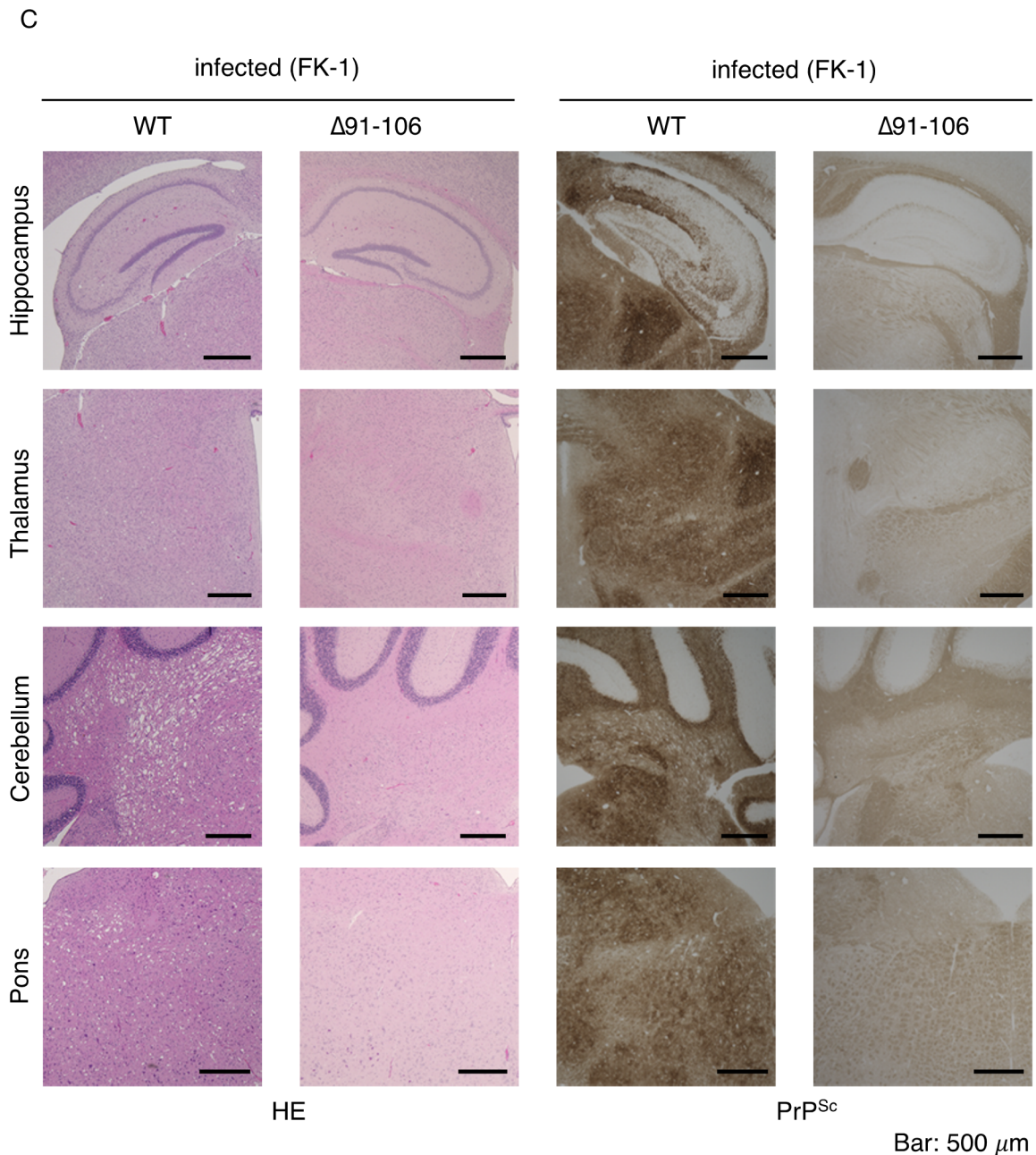


Figure S4. (A) HE staining and immunohistochemistry for WT PrP^{Sc} and PrP^{Sc} $\Delta 91-106$ with SAF83 anti-PrP antibody of the brains of RML-infected, terminally ill WT mice and Tg(PrP $\Delta 91-106$)/Prnp^{0/0} mice sacrificed at 573 dpi with RML prions. (B) HE staining and immunohistochemistry for WT PrP^{Sc} and PrP^{Sc} $\Delta 91-106$ with SAF83 anti-PrP antibody of the brains of 22L-infected, terminally ill WT mice and Tg(PrP $\Delta 91-106$)/Prnp^{0/0} mice sacrificed at 603 dpi with 22L prions. (C) HE staining and immunohistochemistry for WT PrP^{Sc} and PrP^{Sc} $\Delta 91-106$ with SAF83 anti-PrP antibody of the brains of FK-1-infected, terminally ill WT mice and Tg(PrP $\Delta 91-106$)/Prnp^{0/0} mice sacrificed at 603 dpi with FK-1 prions.

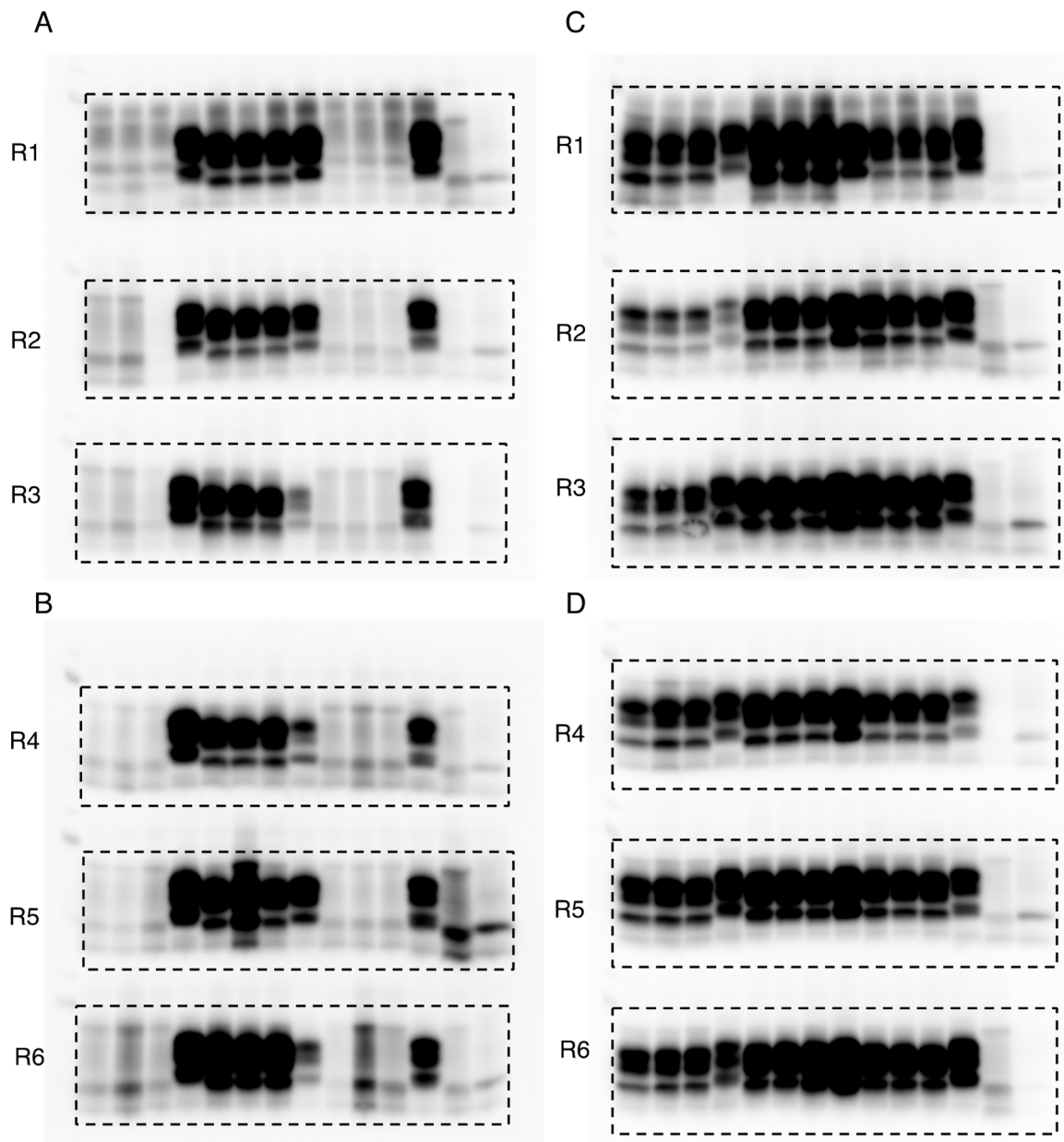


Figure S5. (A,B) Original, uncropped and unadjusted images of Figure 5A. (C,D) Original, uncropped and unadjusted images of Figure 5B.