

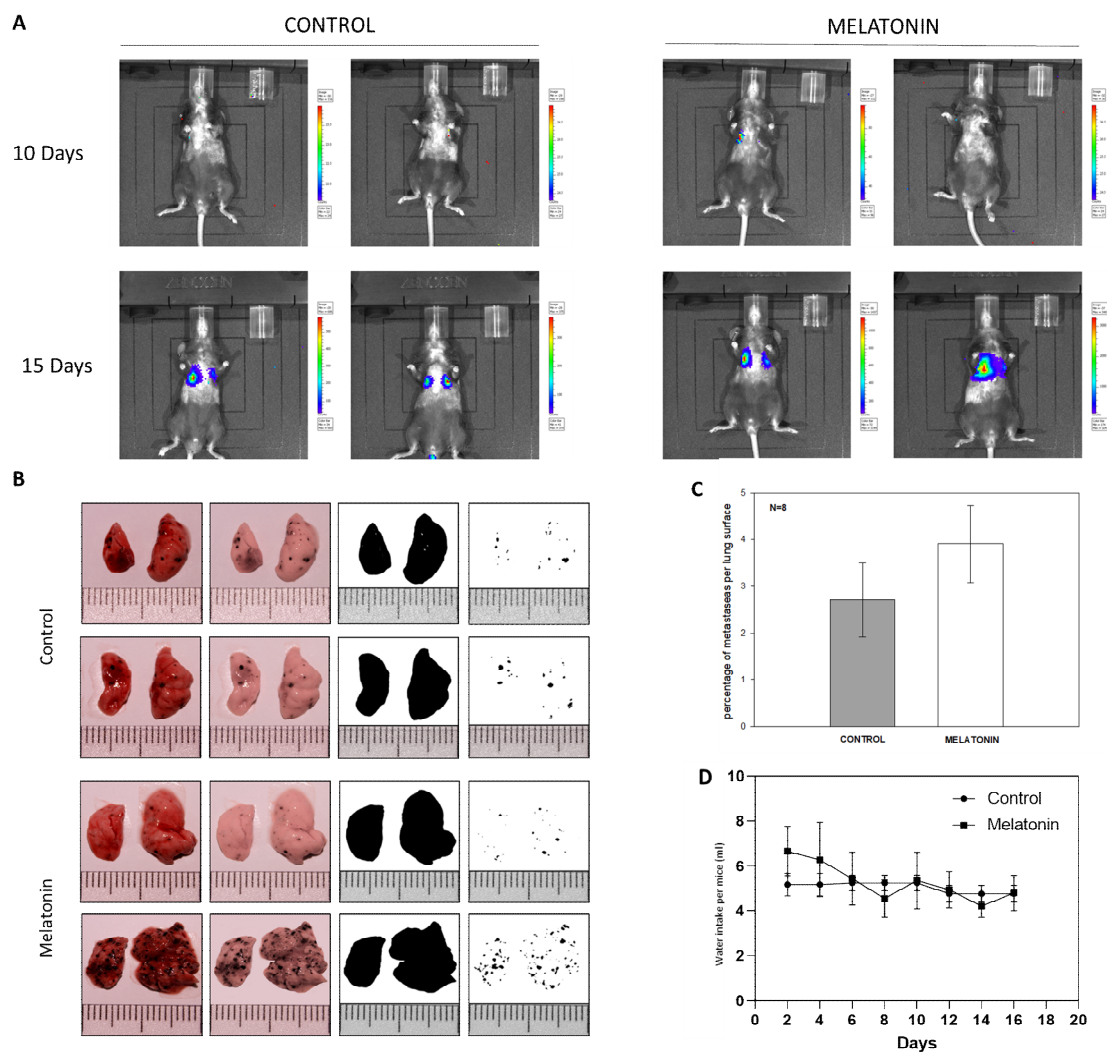
1

2

3

4

Supplementary Figure S1. Melatonin detection by HPLC in B16-F10 cells and culture medium. (A) Chromatogram of Control Medium and Control Cells and respective treated groups. **(B)** Absorption spectra of treated medium and cells.



5

6

7

8

9

Supplementary figure S2. *In vivo* model for B16-F10 lung metastases treated with drink water Melatonin. (A) Bioluminescence, localization and size of total lung metastases. (B) Macroscopic sections of lung metastases and image isolation process. (C) Percentage of metastases Surface per total lung Surface. (D) Water intake per mice. Data were shown as average +/- SEM.