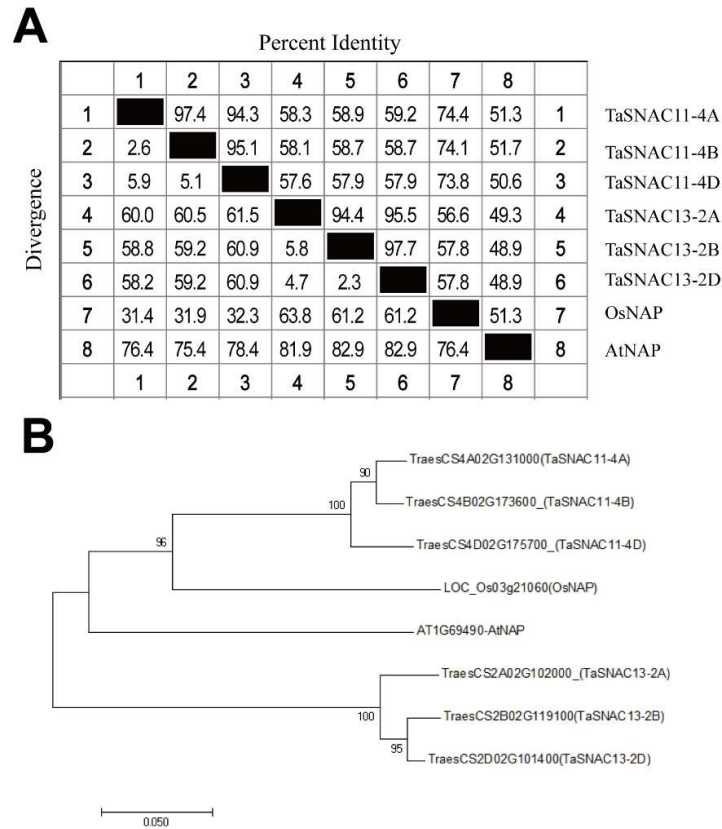
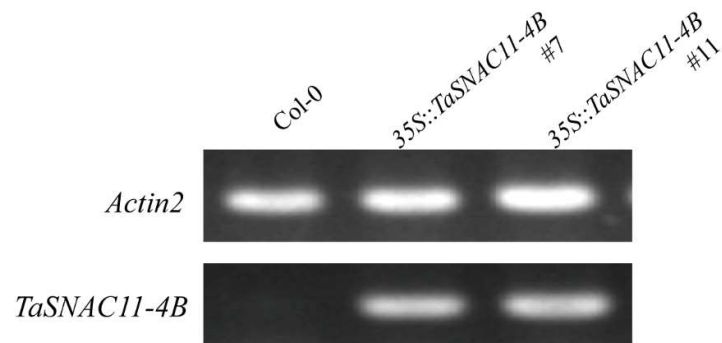


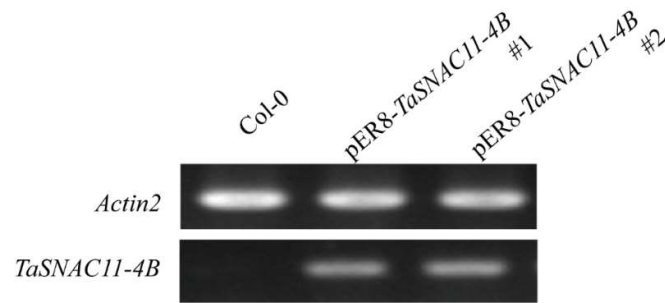
Supplementary Figures



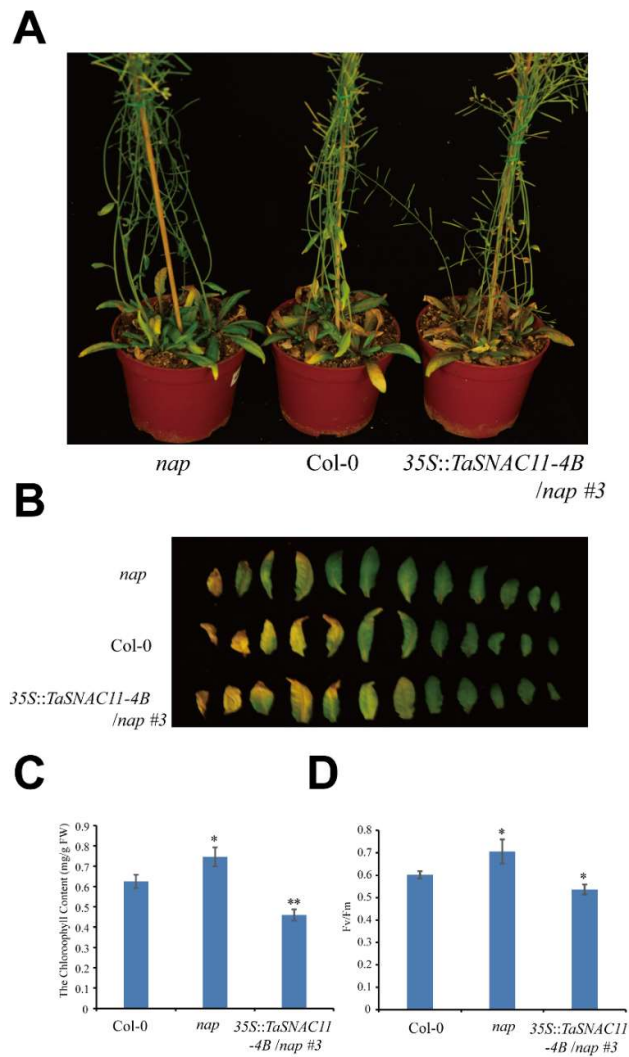
Supplementary Figure 1 Protein sequence alignment and phylogeny of TaSNAC 11-4B with other NAC homologues including OsNAP and AtNAP. **(A)** Identity and divergence of analyze among TaSNAC11-4B and other NAC proteins as indicated using MegAlign software. **(B)** Neighbor-joining (NJ) phylogenetic tree among TaSNAC11-4B and other NAC proteins including OsNAP and AtNAP.



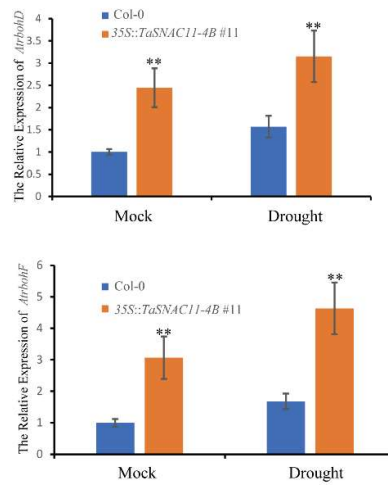
Supplementary Figure 2 Expression of *TaSNAC11-4B* in different lines as indicated.



Supplementary Figure 3 Expression of *TaSNAC11-4B* in Col-0 and EST-inducible transgenic plants.



Supplementary Figure 4 Phenotype analysis of 35S::*TaSNAC11-4B*/*nap* #3. **(A)** Phenotypes of whole plants of *nap* null mutant, Col-0 and 35S::*TaSNAC11-4B*/*nap* #3. **(B)** Phenotypes of individual rosette leaves of *nap* null mutant, Col-0 and 35S::*TaSNAC11-4B*/*nap* #3. **(C–D)** Chlorophyll content and Fv/Fm ratio of the sixth leaf from plants of different genotypes. Asterisks indicate statistically significant differences (* $p < 0.05$; ** $p < 0.01$) using student's *t*-test. Three independent experiments were performed.



Supplementary Figure 5. Expression analysis of *AtrbohD* and *AtrbohF* genes in Col-0 and TaSNAC11-4B #11 overexpression plants.

Supplementary Table 1. Primers used in this study.

Primers Name	Primers Sequences (5'-3')
Q_SAG12_F	TCCAATTCTATTCGTCGGTGTGT
Q_SAG12_R	CCACTTCTCCCCATTTTGTC
Q_ACT2_F	TGTGCCAATCTACGAGGGTTT
Q_ACT2_R	TTCCCCGCTCTGCTGTTGT
Q_RBCS3B_F	AGTAATGGCTTCCTCTATGC
Q_RBCS3B_R	GTGATGTCCTTGTTGGTCTTG
Q_SAG13_F	TGCTGCGACGTCCTCTCT
Q_SAG13_R	TTGAATATTGACGTTCCTCA
TaSNAC11-4B-QF	ACAGCATGCCGCAGCTTGGG
TaSNAC11-4B-QR	CTGGCTGGCTCGTCGACCCG
TaGAPDH-QF	TTAGACTTGCGAAGCCAGCA
TaGAPDH-QR	AAATGCCCTTGAGGTTTCCC
pBridgeTaSNAC11-4BF	TGTATCGCCGGAATTCATGATCATGTCCGACCCGGC
pBridge TaSNAC11-4BR	GCAGGTCGACGGATCCTTAGAAACGGAGCAACGTCC
pBridge TaSNAC11-4B-NR	GCAGGTCGACGGATCCGAGCGGTACTIONCTCGTCATGA

pBridge TaSNAC11-4B-CF	TGTATCGCCGGAATTCATGGCTGCCGCCGACGCACACG
TaSNAC11-4B-OEF	GTGGGGACAAGTTTGTACAAAAAAGCAGGCTTCATGATCA TGTCGGACCCGGC
TaSNAC11-4B-OER	GTGGGGACCACTTTGTACAAGAAAGCTGGGTCTTAGAAAC GGAGCAACGTCC
TaSNAC11-4B-RTF	ATGATCATGTCCGACCCGGC
TaSNAC11-4B-RTR	GAGGCGGTACTCGTGCATGA
AtrbohD-qF	AGCTTCACAATTATTGCACGAG
AtrbohD-qR	TCTCCAGTTAGGTTTAGCGAAG
AtrbohF-qF	TATTGGAGACCATCTTGCTTGT
AtrbohF-qR	CGTTAAAACCGTTAGTCGATC
AtrbohD -pGreen-F	CGGTATCGATAAGCTTGTCTCCATCTATGTATCTAT
AtrbohD -pGreen-R	TAGAACTAGTGGATCCCGAATTCGAGAAACCAAAAAGAT C
AtrbohF -pGreen-F	CGGTATCGATAAGCTTGTAGTCTACATCTAACCCATTG
AtrbohF -pGreen-R	TAGAACTAGTGGATCCAGATCCAAAGTCGGAATTC
