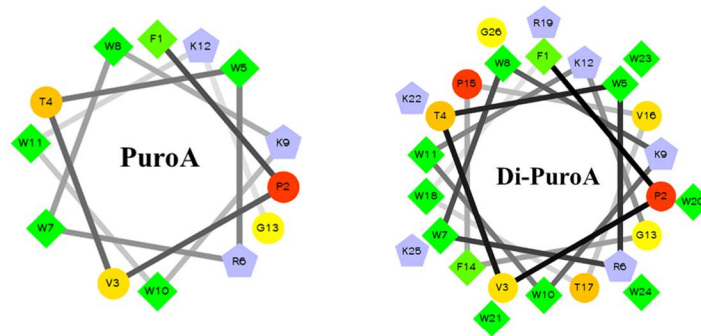
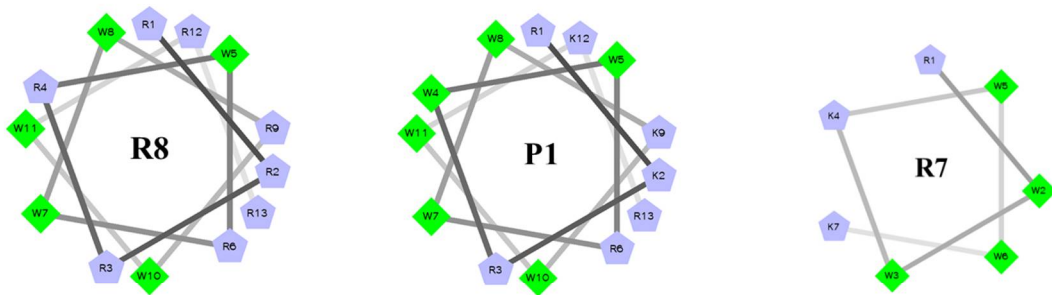


1

SUPPLEMENTARY DATA



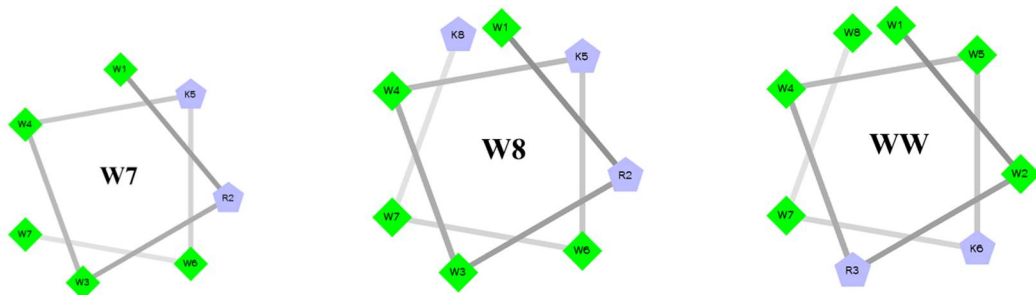
2



3



4



5

6

Figure S1. Helical wheel projections of peptides.

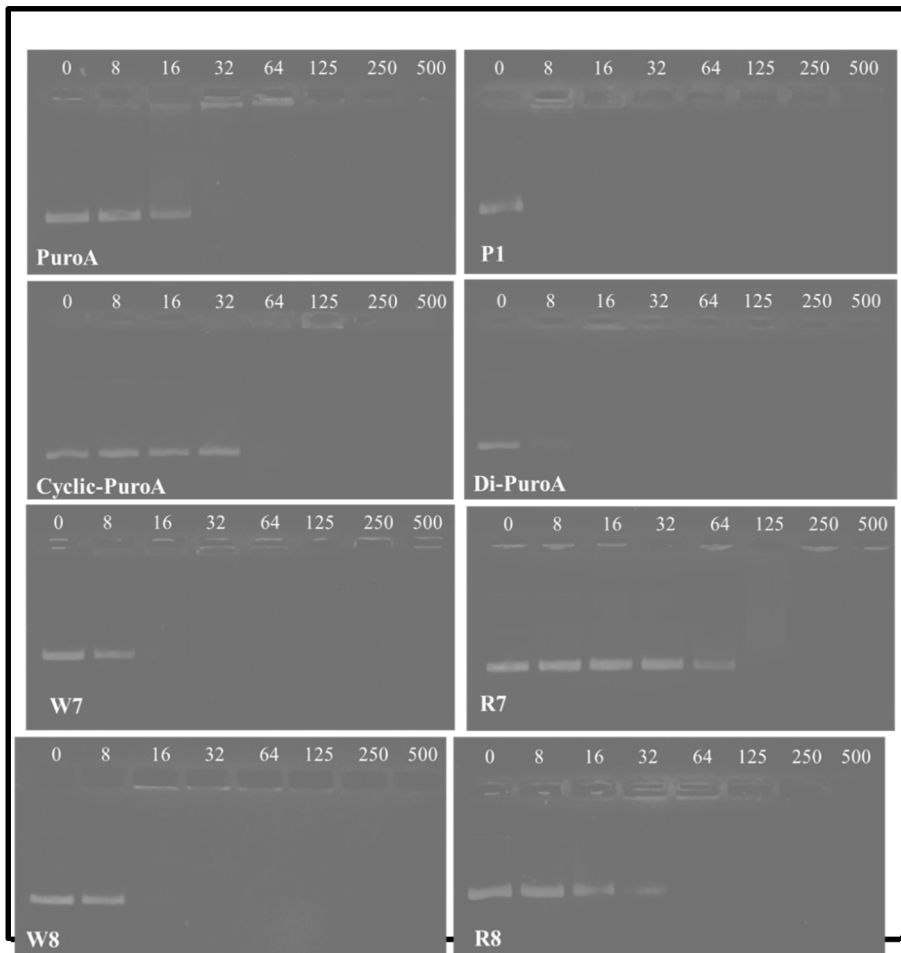
7

Residues in circles are hydrophilic, diamonds are hydrophobic, and pentagons are potentially positively charged residues. Green: most hydrophobic residues; yellow: residues with zero hydrophobicity; red: most hydrophilic (uncharged) residues; light blue: potentially charged residues

10

11

12



13

14

15

16

17

18

19

Figure S2. Plasmid DNA gel retardation by peptides. 100 ng of purified pBluescript SK(+) plasmid DNA was mixed with peptides to final concentrations of 0, 8, 16, 32, 64, 125, 250 and 500 µg/mL before electrophoresis.

R6	32	16	64	32	250	250	>250	>250
R7	8	16	32	32	250	250	>250	>250
W7	4	8	4	8	4	8	4	8
dW7	8	8	8	8	8	8	8	8
W8	4	8	4	8	4	8	4	8
WW	8	8	8	8	8	8	8	8
dWW	8	8	8	8	8	8	8	8