

## Supplementary Figures for

### **Albanol B from mulberries exerts anti-cancer effect through mitochondria ROS production in lung cancer cells and suppresses *in vivo* tumor growth**

Thanh Nam Phan<sup>1,#</sup>, Okwha Kim<sup>1,#</sup>, Manh Tuan Ha<sup>2</sup>, Cheol Hwangbo<sup>3</sup>, Byung-Sun Min<sup>2</sup>, and Jeong-Hyung Lee<sup>1,\*</sup>

<sup>1</sup>Department of Biochemistry, College of Natural Sciences, Kangwon National University, Chuncheon, Gangwon-Do 24414, Republic of Korea

<sup>2</sup>College of Pharmacy, Catholic University of Daegu, Gyeongbuk 38430, Republic of Korea.

<sup>3</sup>Division of Applied Life Science (BK21 Plus), PMBBRC, Division of Life Science, College of Natural Sciences, Gyeongsang National University, Jinju 52828, Republic of Korea

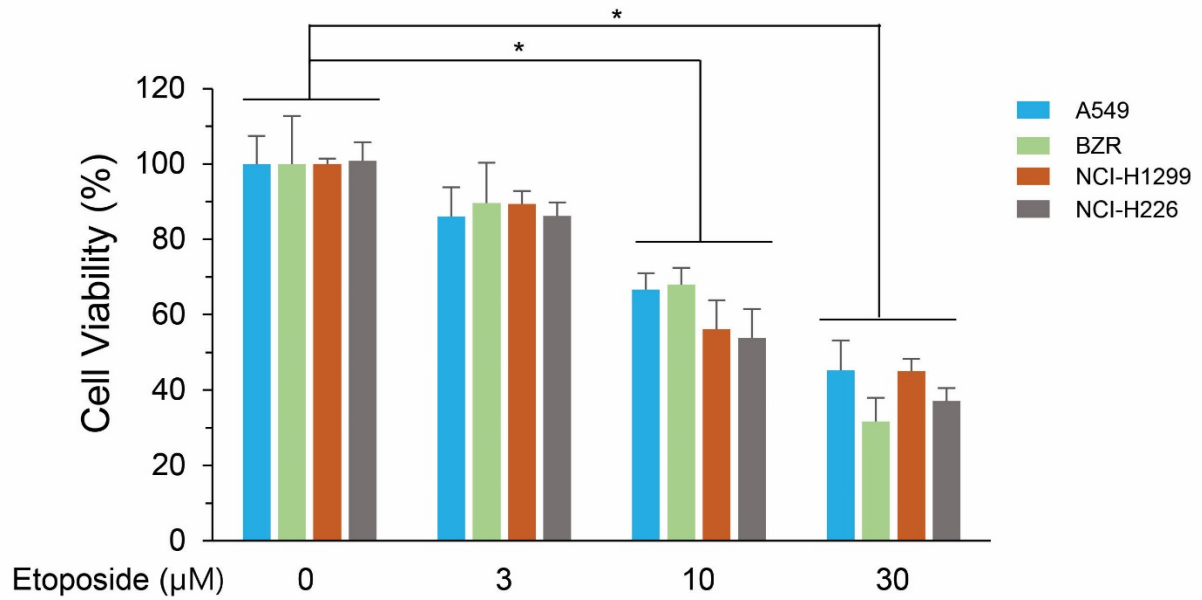
<sup>#</sup>These authors contributed equally to this work.

<sup>\*</sup>Corresponding Author. Department of Biochemistry, College of Natural Sciences, Kangwon National University, Chuncheon, Gangwon-Do 24341, Republic of Korea.

Tel.:+82-33-250-8519; Fax:+82-33-259-5664; E-mail: jhlee36@kangwon.ac.kr

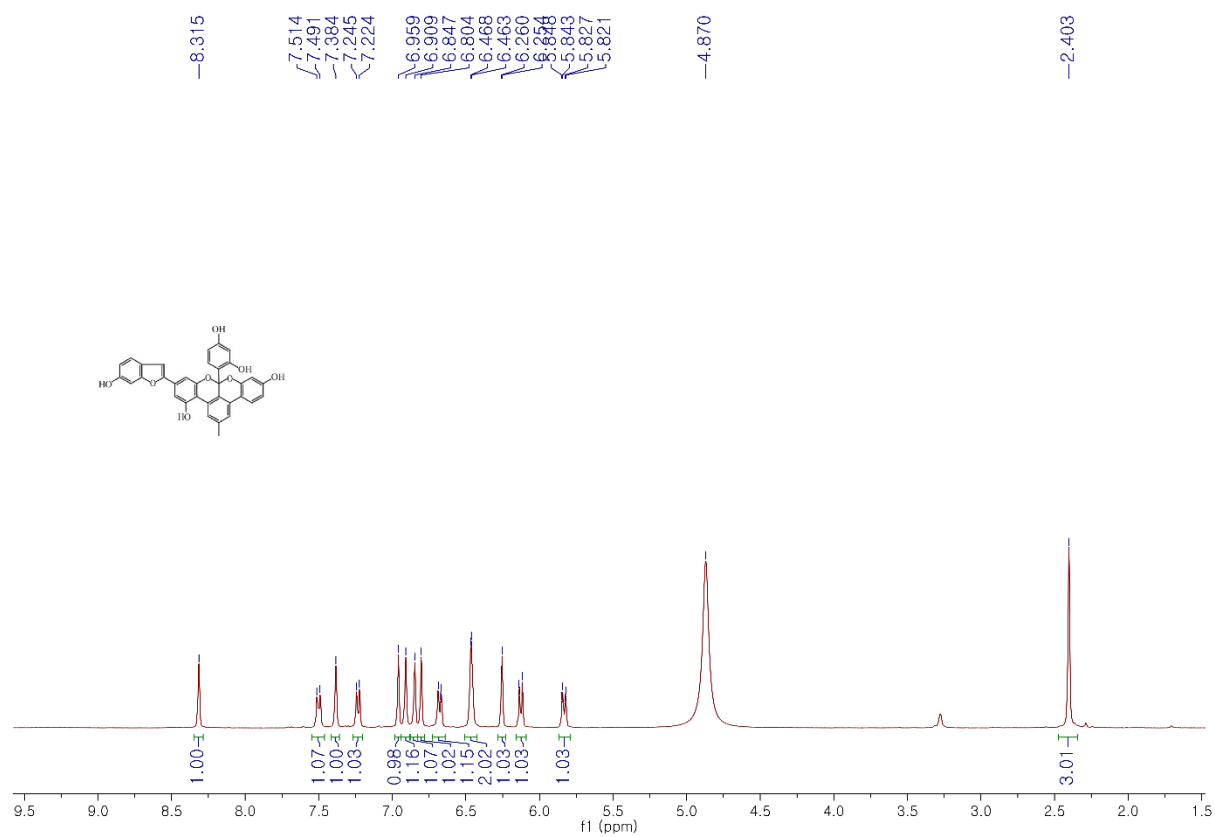
**Running title:** Anti-cancer effect of albanol B in lung cancer cells

## Supplementary Figure 1.



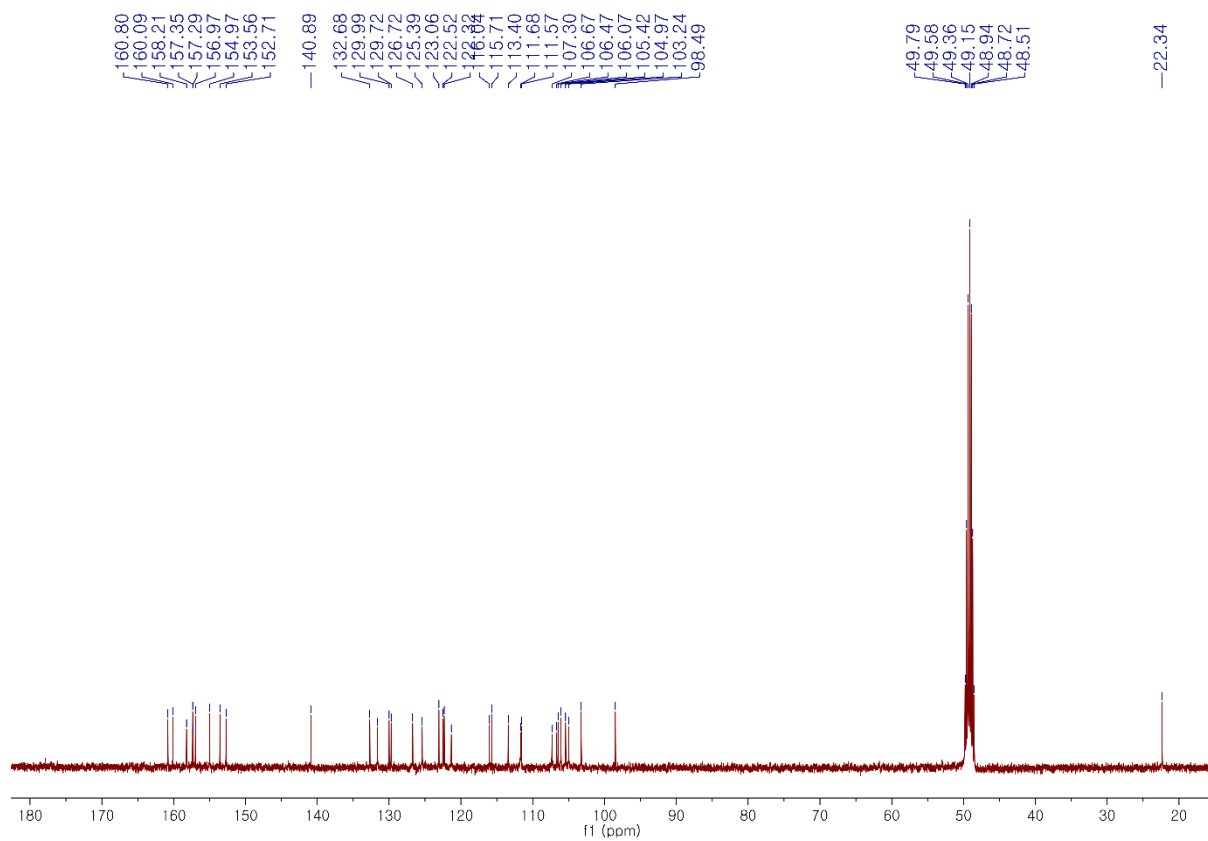
**Supplementary Figure 1. Effect of etoposide on the cell viability of A549, BZR, H1975, and H226 cells.** A549, BZR, H1975 and H226 cells were treated with the indicated concentrations of etoposide for 48 h. Cells viability was assessed by MTT assay. Data are presented as the mean  $\pm$  SEM (\*P < 0.01 compared with vehicle-treated control; n = 3).

## Supplementary Figure 2.



Supplementary Figure 2. <sup>1</sup>H NMR spectrum of albanol B in CD<sub>3</sub>OD.

### Supplementary Figure 3.



Supplementary Figure 3.  $^{13}\text{C}$  NMR spectrum of albanol B in  $\text{CD}_3\text{OD}$ .