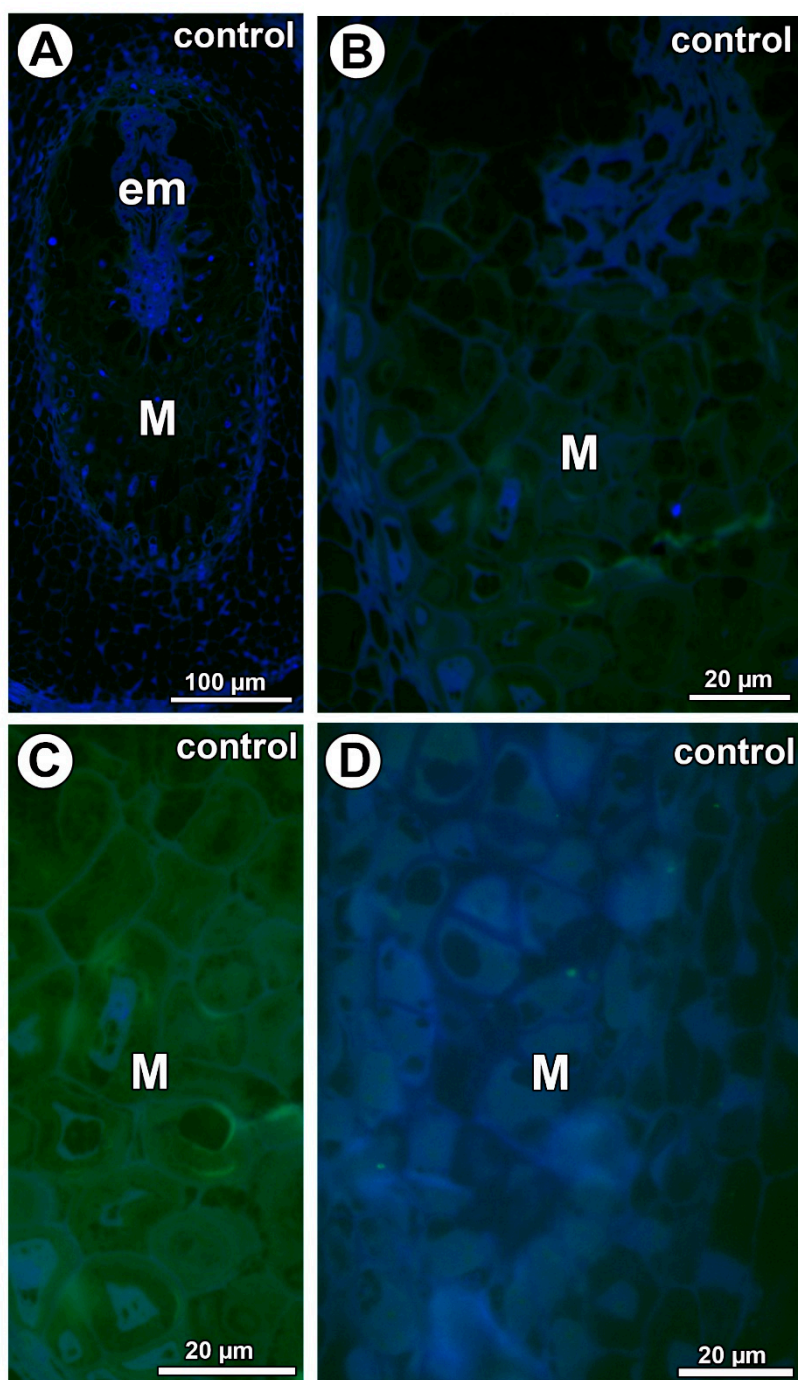




Supplementary Materials



**Supplementary Figure 1.** Control reactions of immunolabeling of mucilage and cell wall components. (A,B) Section through the young seed of *Taraxacum officinale*, note embryo (em) and mucilage cells (M). (C) Mucilage cells (M) from *Taraxacum* seed. (D) Section through the ovule of *Pilosella officinarum* with mucilage cells (M).