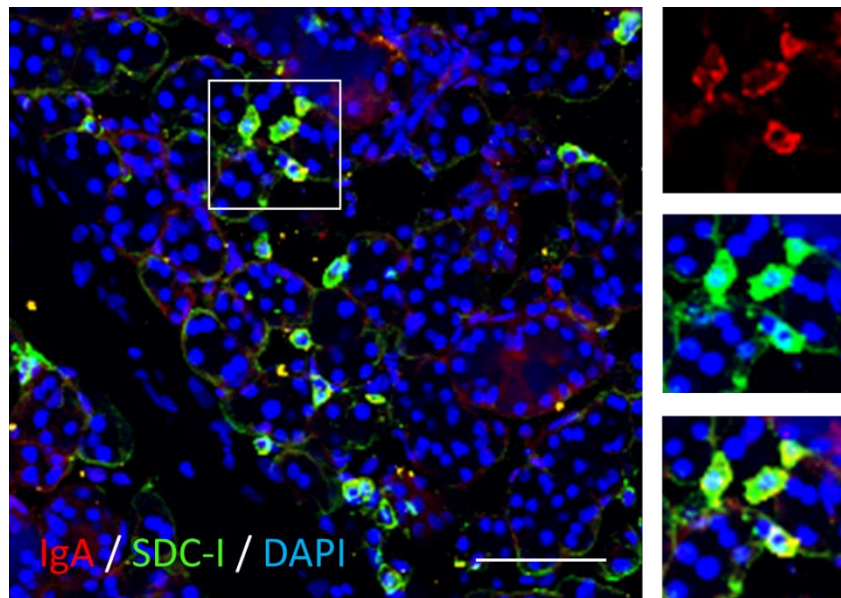
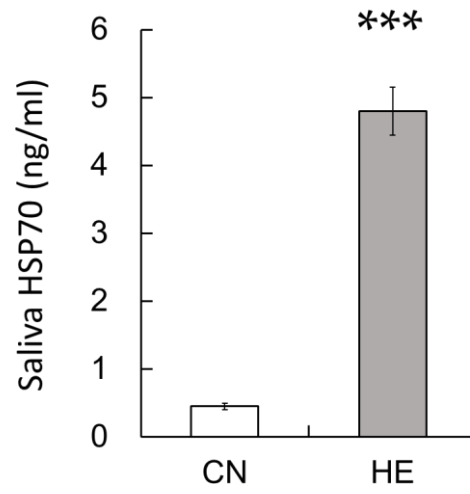


**Figure S1.** The core body temperature ( $T_{\text{core}}$ ) of control (CN, open circle) and heat-exposed rats (HE, grey circle) during heat exposure period. Values are the means  $\pm$  SEMs. Dark bars above abscissa indicate the dark phase of the day.



**Figure S2.** Double-staining of Immunoglobulin A (IgA) and Syndecan-I (SDC-1) in the submandibular gland (SMG) of heat-exposed rat. SDC-1-immunopositive cells (green) were frequently co-stained with anti-IgA antibody (red) in the SMGs. The nuclei were counter-stained with 4',6-diamidino-2-phenylindole (DAPI, blue). The right panel shows magnified views of the boxed regions in left. Scale bar, 25  $\mu$ m.



**Figure S3.** Salivary heat shock protein 70 (HSP70) expression of control (CN, open column) and heat-exposed rats (HE, grey column). Values are the means  $\pm$  SEM. \*\*\* $p < 0.001$ , significant difference between the CN and HE groups.