



# Supplemental Information

## 1. Supplemental Information on Proteome Analysis

### 1.1. Supplemental File 1.

Relative changes in WT mice with LPS exposure. Protein groups that are significantly and 2 fold or more induced are highlighted in dark red, and protein groups that are 2 fold or more but not significantly induced are highlighted in light red. Protein groups that are significantly and 2 fold or more reduced are highlighted in dark green, and protein groups that are 2 fold or more but not significantly reduced, are highlighted in light green.

### 1.2. Supplemental File 2.

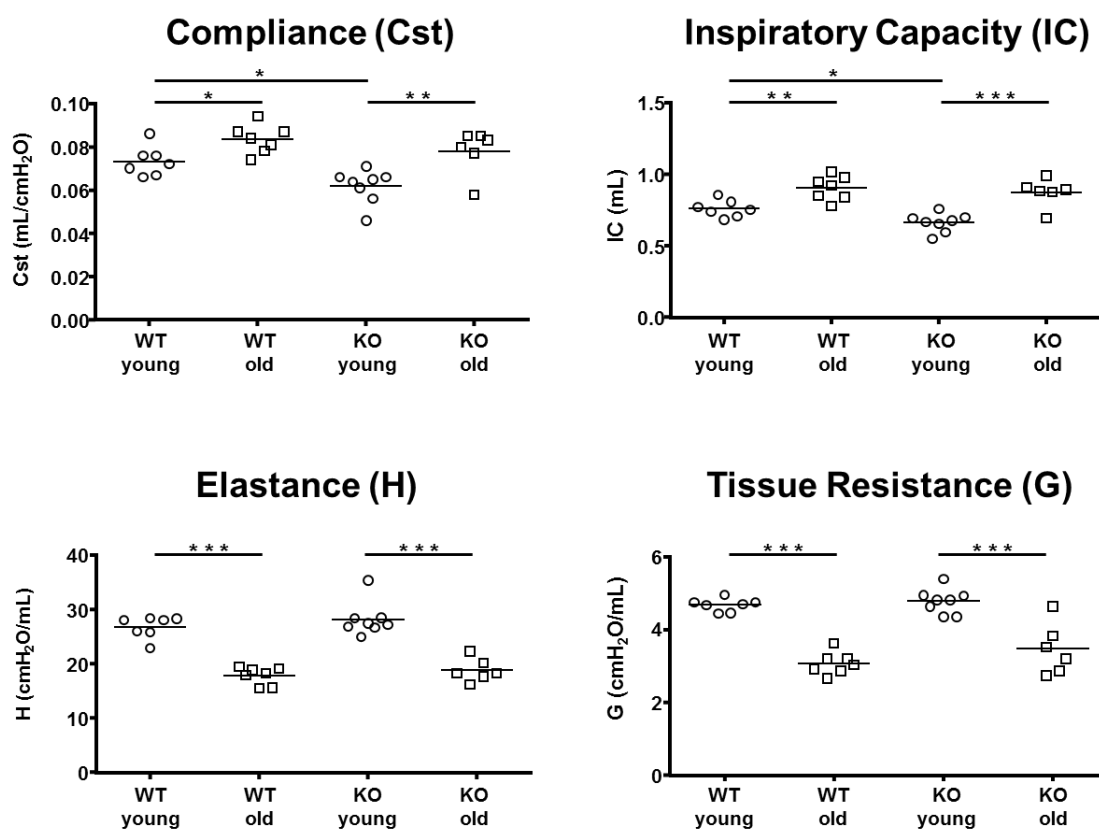
Relative changes in KO mice with LPS exposure. Protein groups that are significantly reduced and 2 fold or more induced are highlighted in dark red, and protein groups that are 2 fold or more, but not significantly induced are highlighted in light red. Protein groups that are significantly and 2 fold or more reduced are highlighted in dark green, and protein groups that are 2 fold or more, but not significantly reduced, are highlighted in light green.

### 1.3. Supplemental File 3.

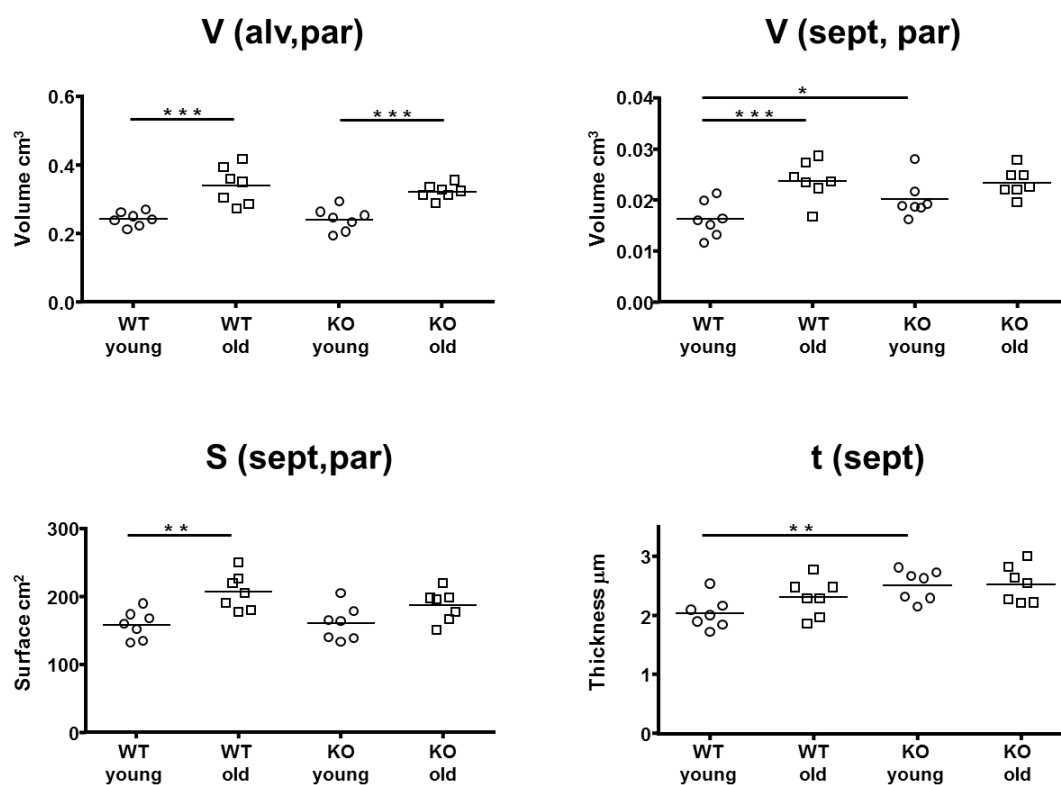
Relative changes in KO vs WT control mice are shown in Supplemental File 3. Protein groups that are significantly and 2 fold or more induced are highlighted in dark red. Protein groups that are significantly and 2 fold or more reduced are highlighted in dark green.

## 2. Supplemental Figures on Lung Function and Structure in 18-Month-Old WT and miR-21 KO Mice

Supplemental figures of lung structure include data that was assessed from WT and miR-21 KO control mice at different ages, including 3-month-old (young) and 18-month-old (old) mice. The data indicated that strain-related differences in lung structure and function disappears with age.



**Supplemental Figure S1.** Lung function analysis in young (3 months) and old (18 months) WT and miR-21 KO control mice. Each mark represents one animal. Horizontal bars represent the mean, lines show significant differences ( $p < 0.05$  (\*),  $p < 0.01$  (\*\*),  $p < 0.001$  (\*\*\*)).



**Supplemental Figure S2.** Stereological analysis of lung structure in young (3 months) and old (18 months) WT and miR-21 KO control mice. Each mark represents one animal. Horizontal bars show the mean, lines indicate significant differences ( $p < 0.05$  (\*),  $p < 0.01$  (\*\*),  $p < 0.001$  (\*\*\*)).