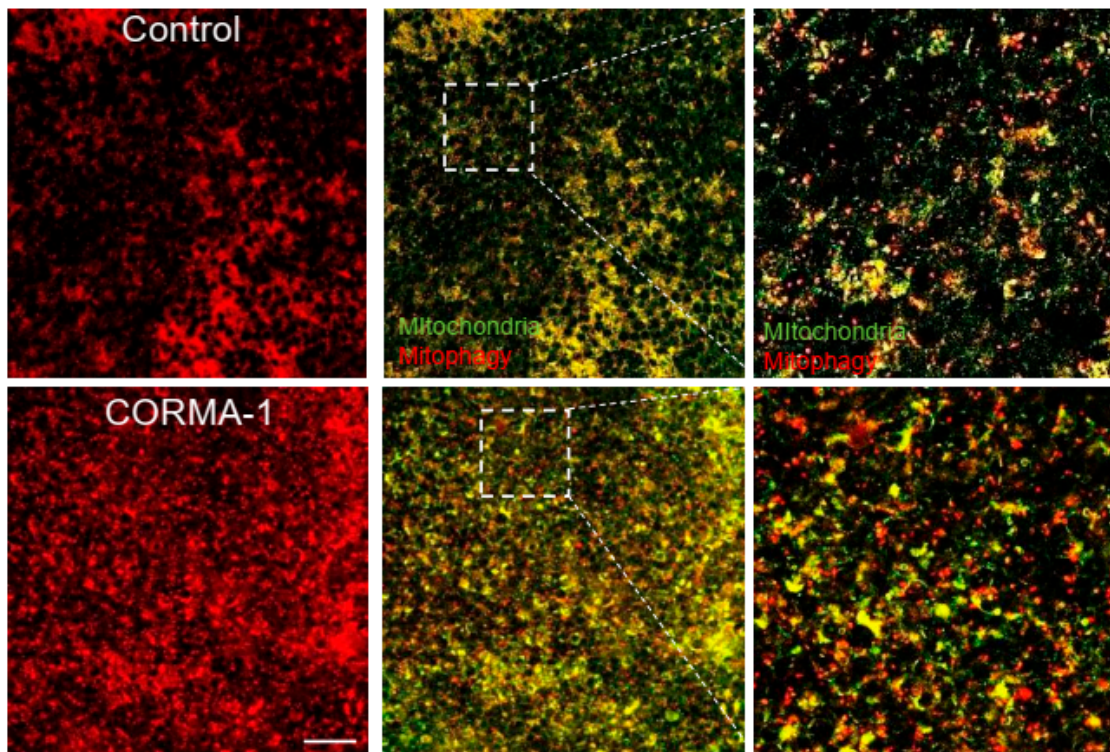


Supplementary Figure 1: ARPE19 *mito*-QC cells were incubated with the indicated doses of tBOOH with or without the presence 0.25 mM DFP for 24h. Cells were fixed and stained for anti-caspase-3. The % of activated caspase-3 apoptotic cells is displayed. *** $p < 0.001$ vs. control, # $p < 0.05$ vs. treatment, ## $p < 0.01$ vs. treatment.



Supplementary Figure 2: Mitophagy of the ONL of retinal *ex vivo* explants cultured with CORMA-1 was assessed. The pictures show exemplary DAPI pictures as well as the red only channel, and an overlay of the red and green channel; highlighting the red puncta in a magnification, scale bar 10 μm .