

Supplementary Materials:

Table S1. Primers used in the experiment.

| Primer Name | Primer Sequence (5'→3') |
|-------------|--------------------------------|
| GsGIS3-F | TCTAGATGGAAACCACCCAACCTGACTACA |
| GsGIS3-R | GAATTCTCAAGCCGAGCCGAGAGATG |
| Actin3-F | GCACCACCGGAGAGAAAATA |
| Actin3-R | GTGCACAATTGATGGACCAG |
| Tubulin-F | ATCGATTCCGTTCTCGATGT |
| Tubulin-R | ATCCAGTTCCTCCTCCCAAC |
| qGIS3-F | CTCTTCGGTTTCAGCGTACA |
| qGIS3-R | GGGAAGTGGGAAGAAGTGACC |
| ALMT1-F | GGCCGACCGTGCTATACGAG |
| ALMT1-R | CATGAGTCCTGTGAACTCCC |
| ALS3-F | TATCGATCCTTGCCGGGACTTCA |
| ALS3-R | GCTTGTCTTGGCGTTGCTCCTA |
| GA20OX1-F | TGTGGAAAATCAATGGCGCTC |
| GA20OX1-R | TCGTTCGATAGAGCCATGAAA |
| GA3OX1-F | TCGCTGACCCCAAGTGAAT |
| GA3OX1-R | GCAAATTGTGTCTAAATCTCATCTG |
| GID1-F | CGACTTGCAAATTCTCGTCCT |
| GID1-R | AGCAACAAACTTACTCTGCTCTC |

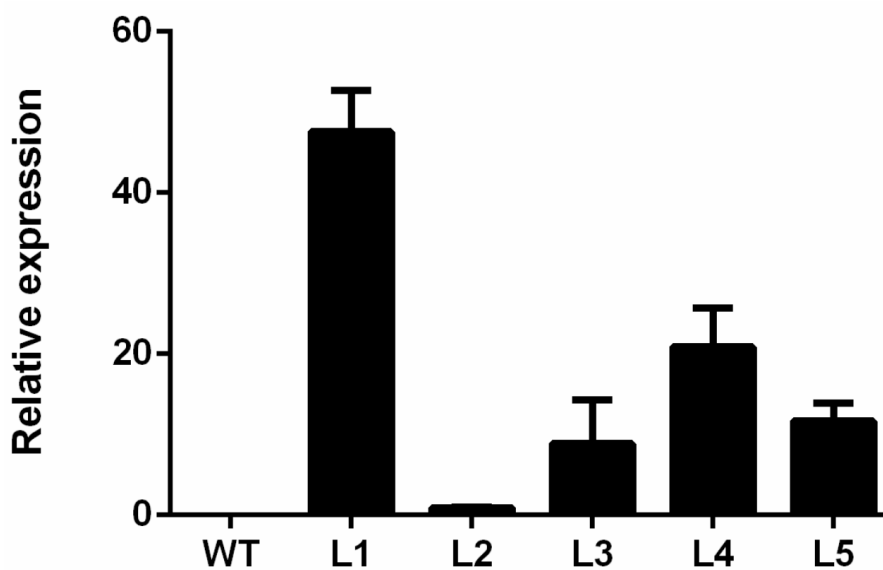


Figure S1: Molecular Identification of Transgenic lines