

Supplementary Materials

Nanoscale Surface Topography Modulates hIAPP Aggregation Pathways at Solid–Liquid Interfaces

*Marcel Hanke, Yu Yang, Yuxin Ji, Guido Grundmeier and Adrian Keller**

Paderborn University, Technical and Macromolecular Chemistry, Warburger Str. 100, 33098
Paderborn, Germany.

* Correspondence: adrian.keller@uni-paderborn.de, Tel.: +49-5251-60-5722

ThT fluorescence analysis of hIAPP aggregation bulk solution

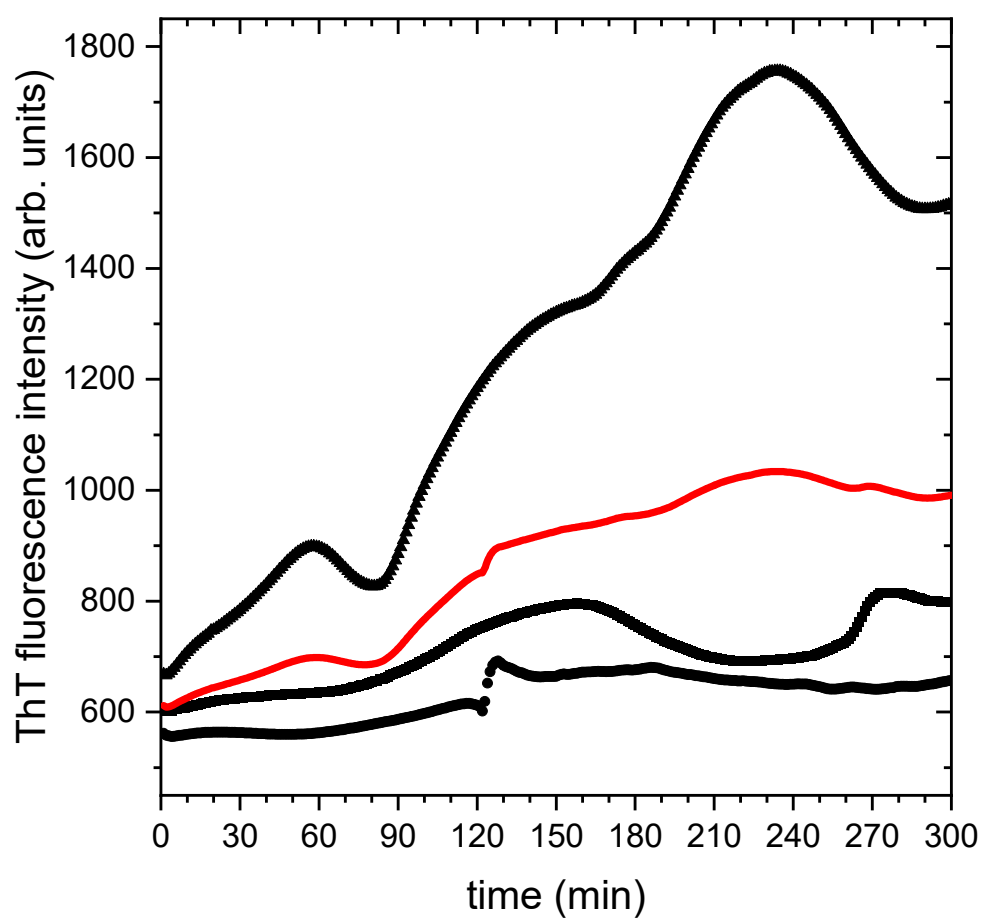


Figure S1: ThT fluorescence measurements of hIAPP aggregation in bulk solution. The black data represent three independent measurements while the red curve is their average. Even though the overall fluorescence intensity varies a lot between individual measurements, all curves show an increase in intensity between 60 and 90 min, followed with a saturation regime that is entered between 130 and 160 min.

Additional AFM images of hIAPP aggregates formed in bulk solution

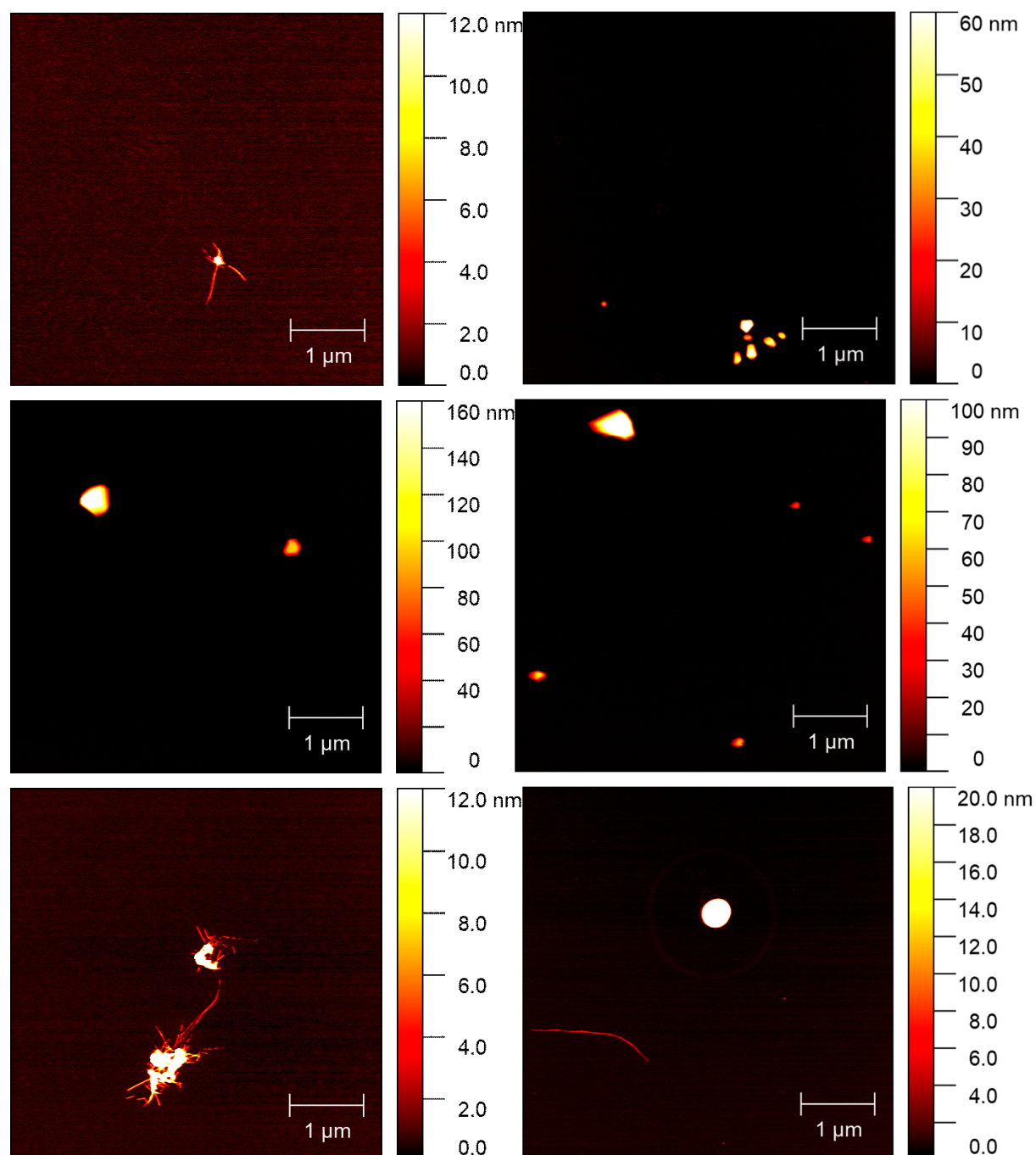


Figure S2: AFM images of hIAPP aggregates obtained after 30 min (left) and 210 min (right) incubation in bulk solution without ThT.

Additional AFM images of hIAPP aggregates formed at the flat and nanorippled surfaces

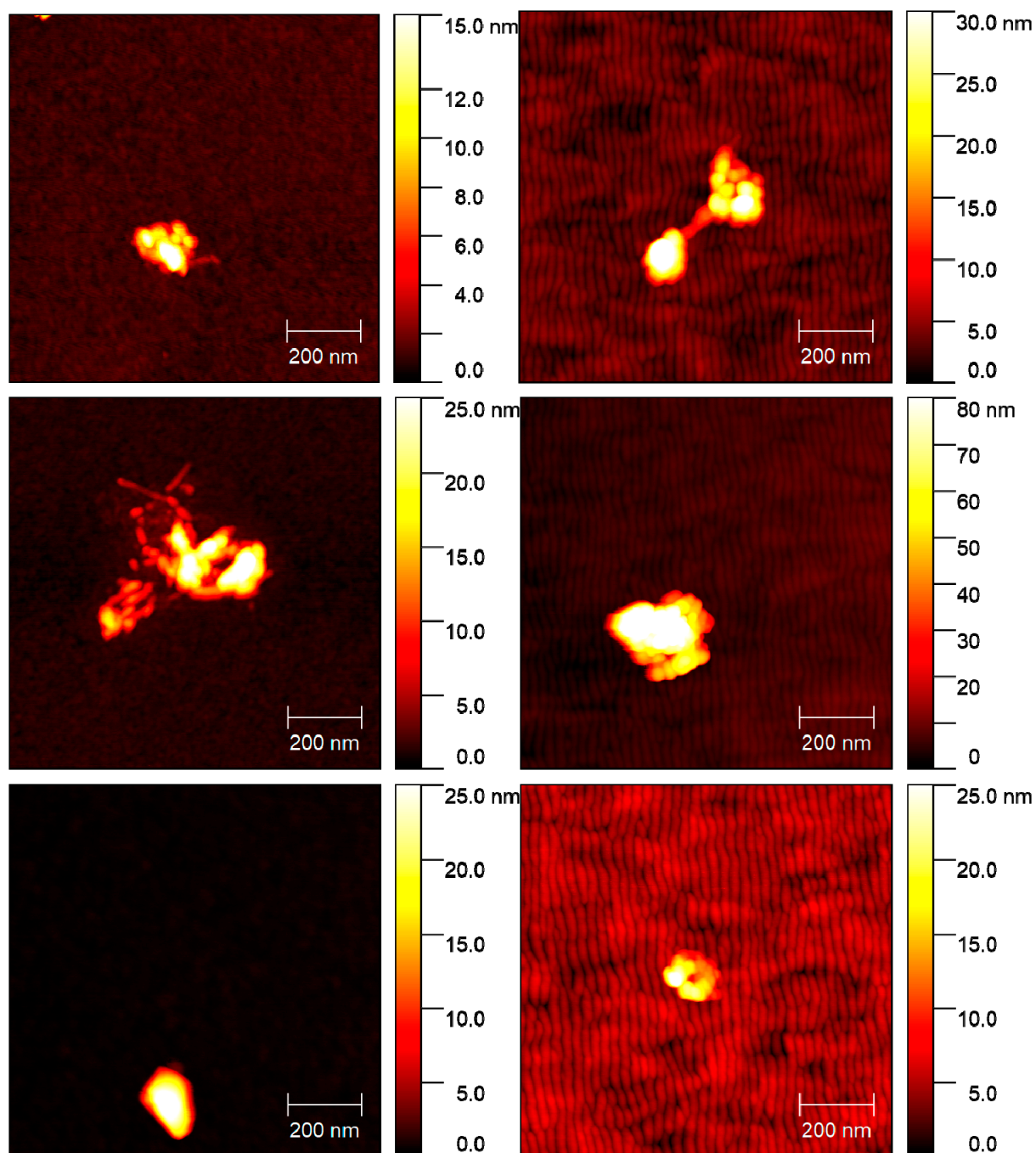


Figure S3: AFM images of hIAPP aggregates obtained after 15 min incubation in contact with the flat (left) and nanorippled (right) surfaces.

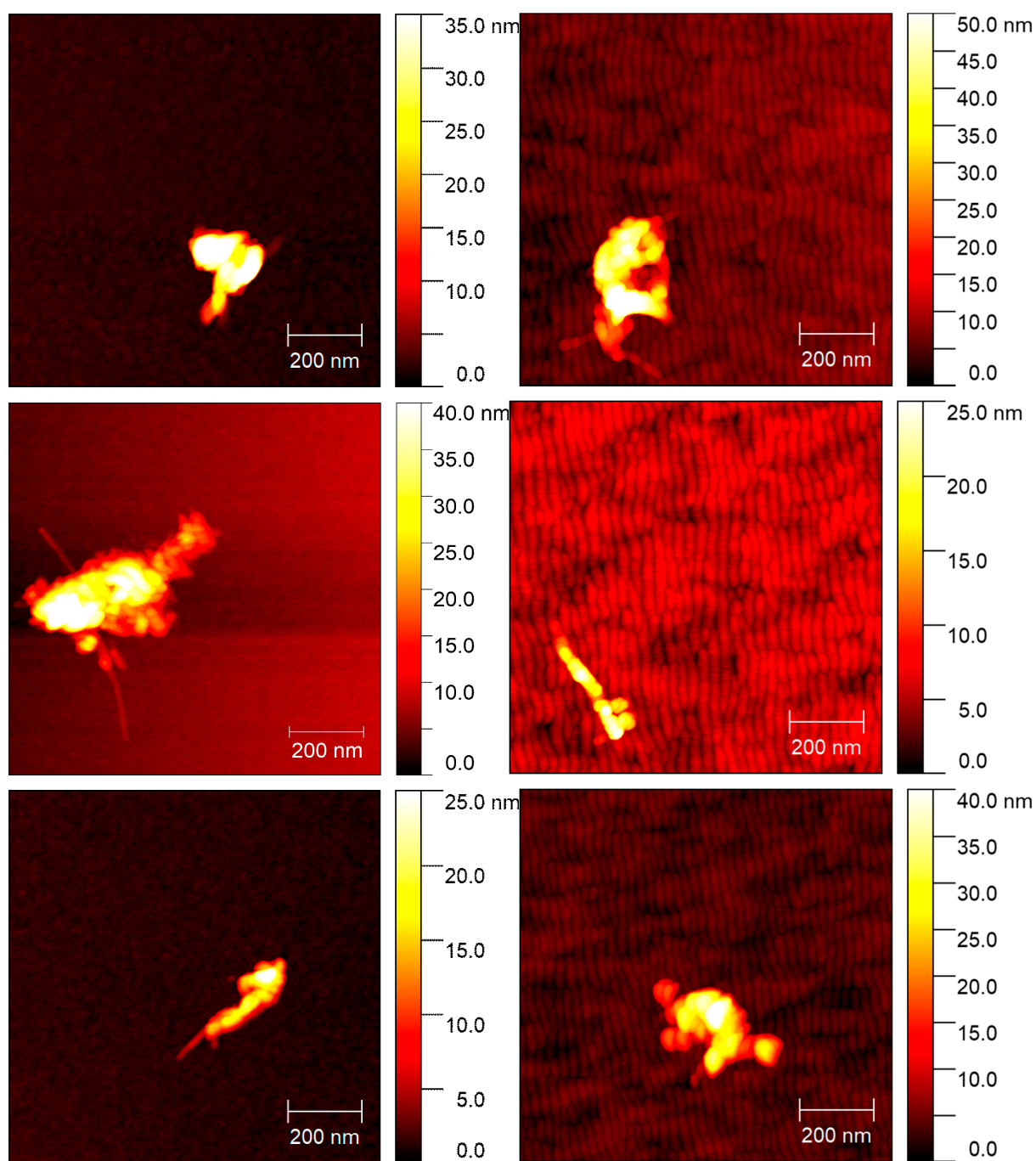


Figure S4: AFM images of hIAPP aggregates obtained after 30 min incubation in contact with the flat (left) and nanorippled (right) surfaces.

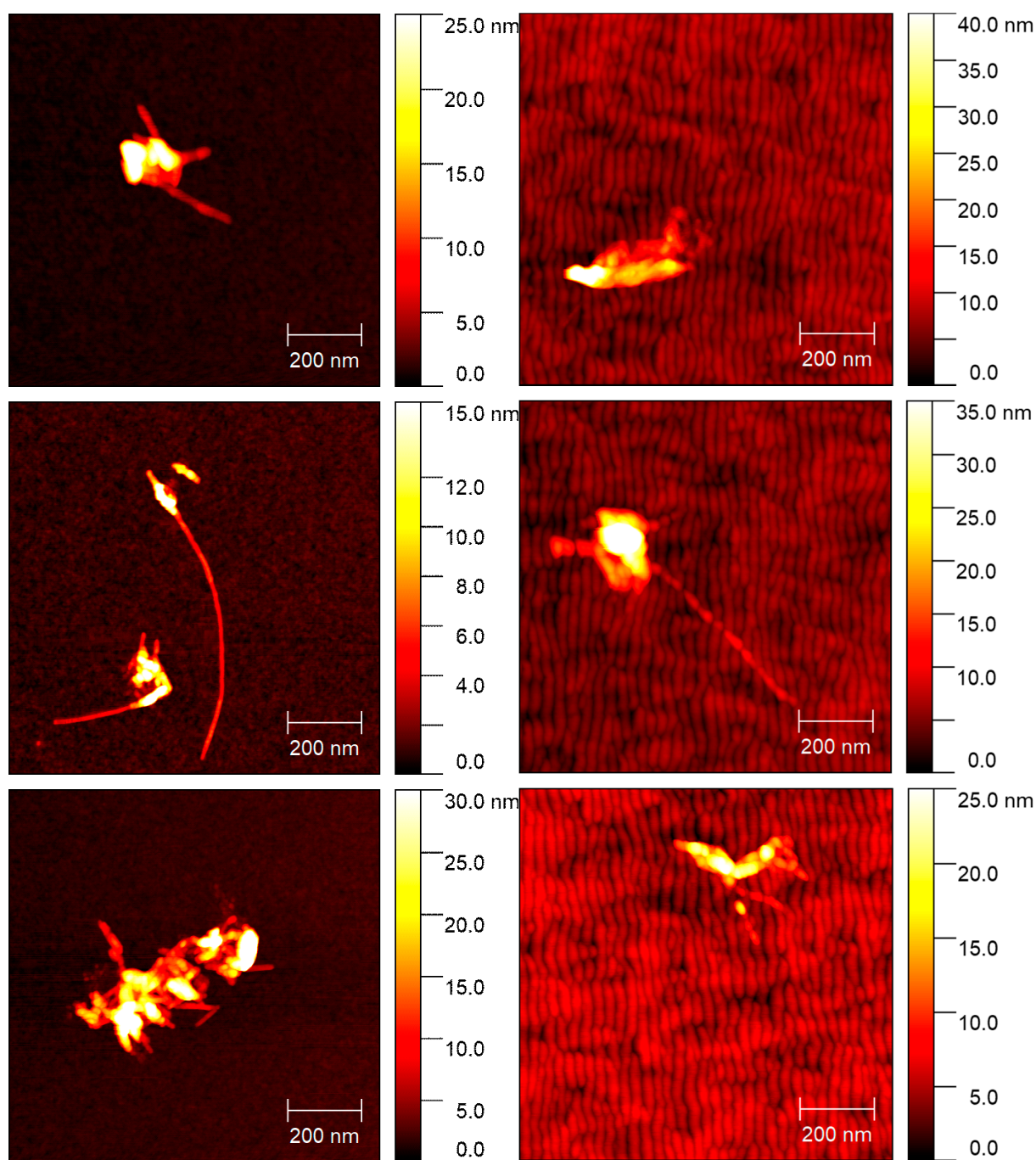


Figure S5: AFM images of hIAPP aggregates obtained after 60 min incubation in contact with the flat (left) and nanorippled (right) surfaces.

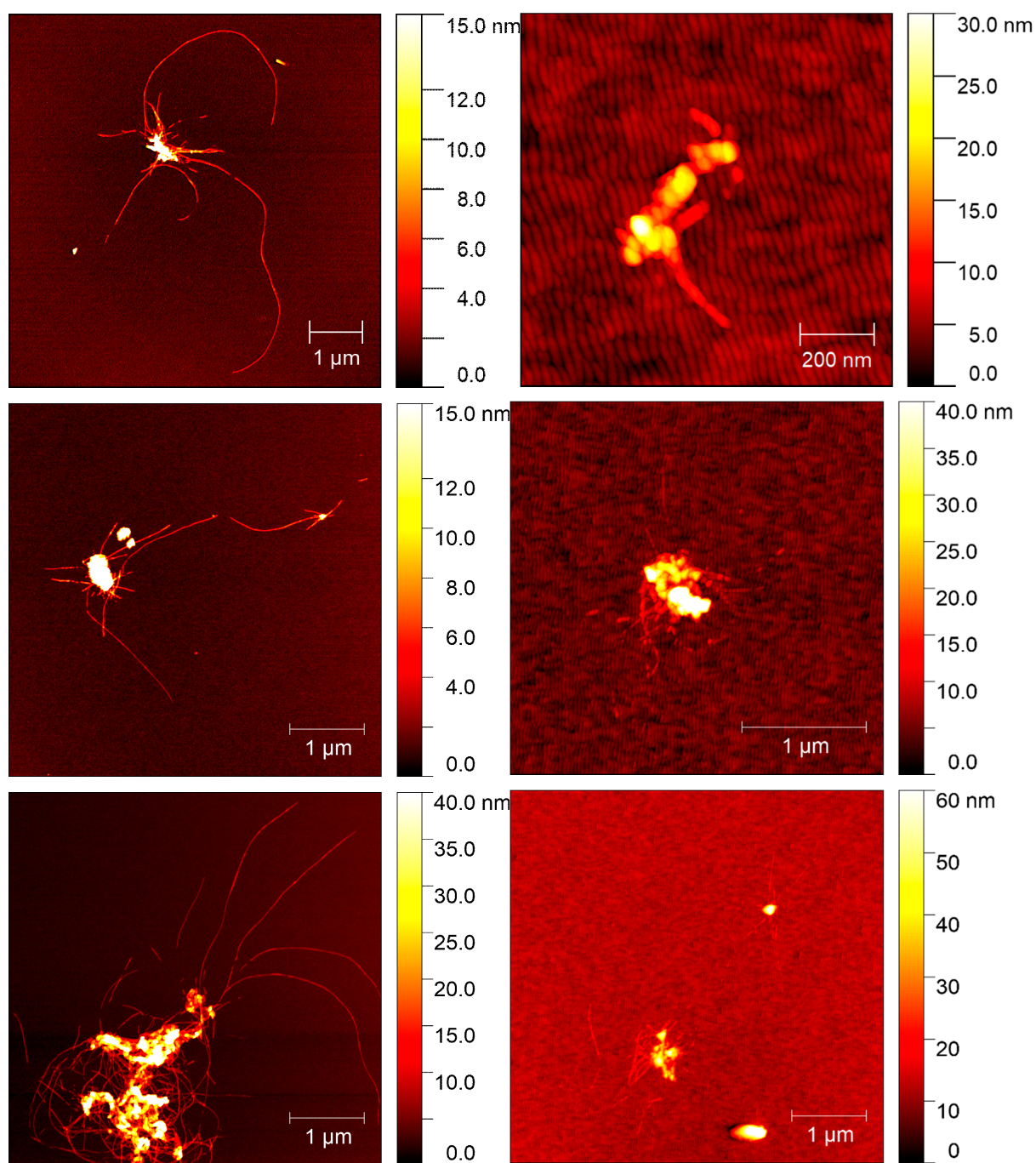


Figure S6: AFM images of hIAPP aggregates obtained after 180 min incubation in contact the flat (left) and nanorippled (right) surfaces.