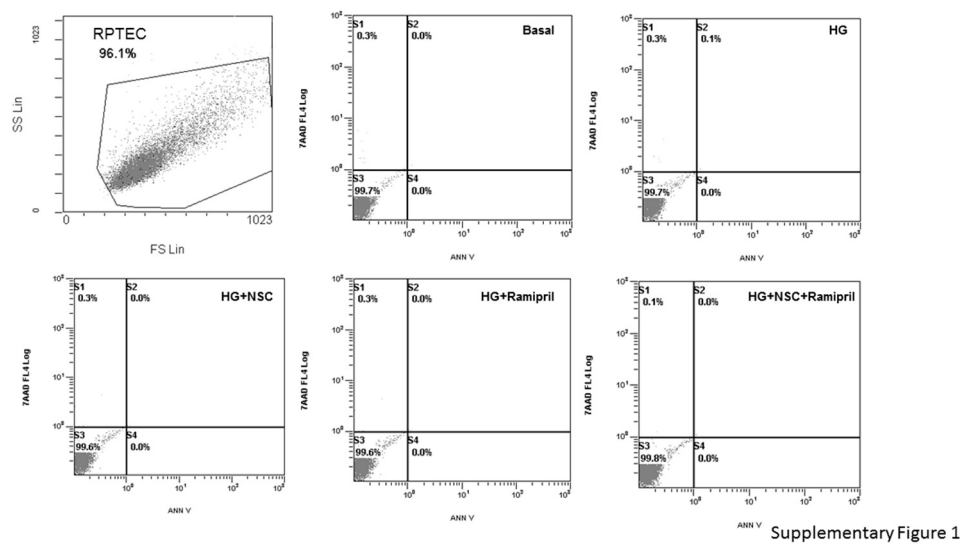
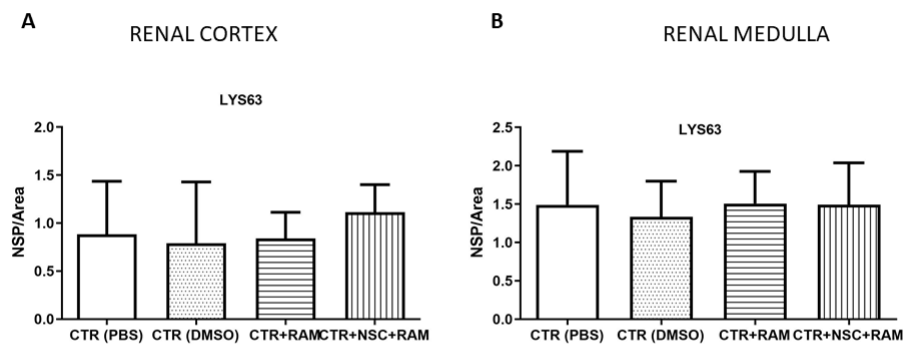


**Supplementary Figure 1: Cell viability of RPTEC cells in the indicated conditions using Annexin-V and 7AAD staining. HG: high glucose; NSC: NSC697923.**

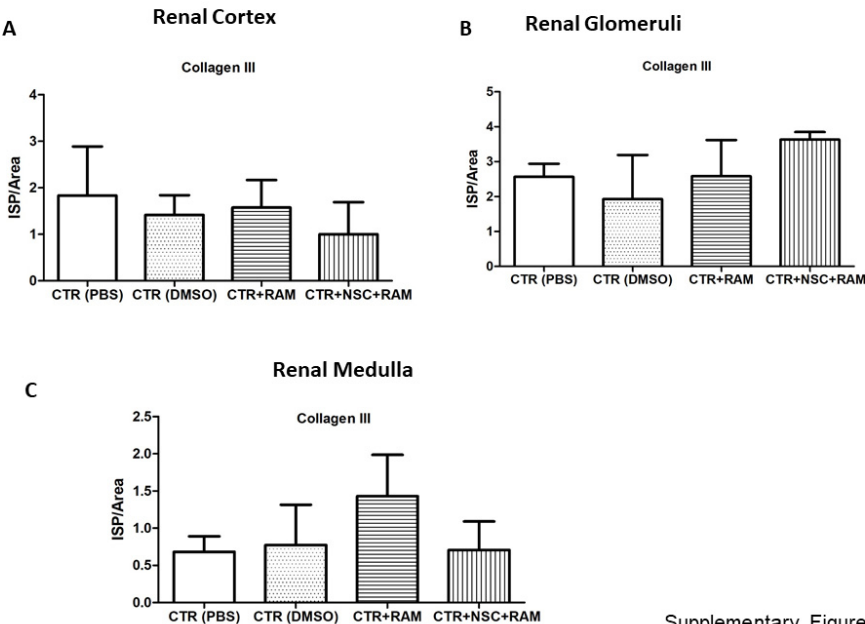


**Supplementary Figure 2: Lysine 63 ubiquitinated proteins, staining in female non-diabetic mice. CTR: control; RAM: Ramipril; NSC: NSC697923. NSP/Area: Number of strong positive/Area**



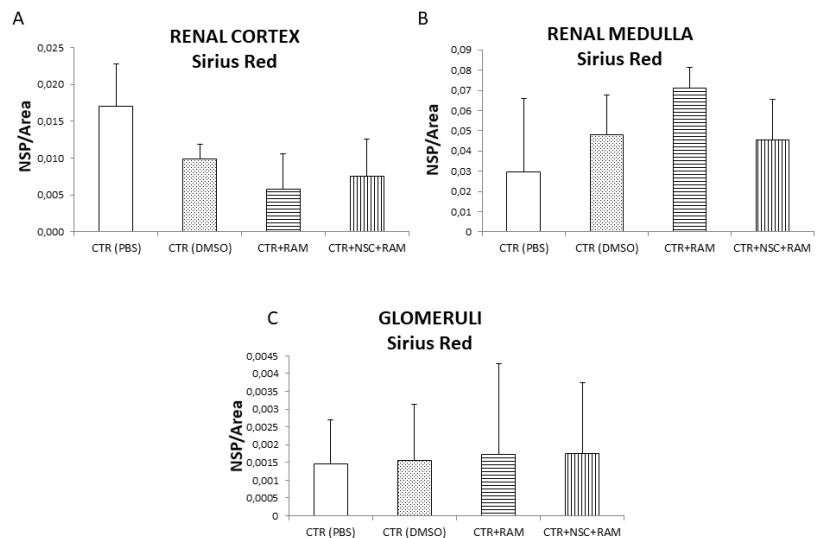
Supplementary Figure 2

**Supplementary Figure 3 – Collagen III staining in female non-diabetic mice. CTR: control; RAM: Ramipril; NSC: NSC697923. ISP/Area: Intensity of strong positive/Area**



Supplementary Figure 3

**Supplementary Figure 4 – Sirius red staining in female non-diabetic mice. CTR: control; RAM: Ramipril; NSC: NSC697923. NSP/Area: Number of strong positive/Area**



Supplementary Figure 4