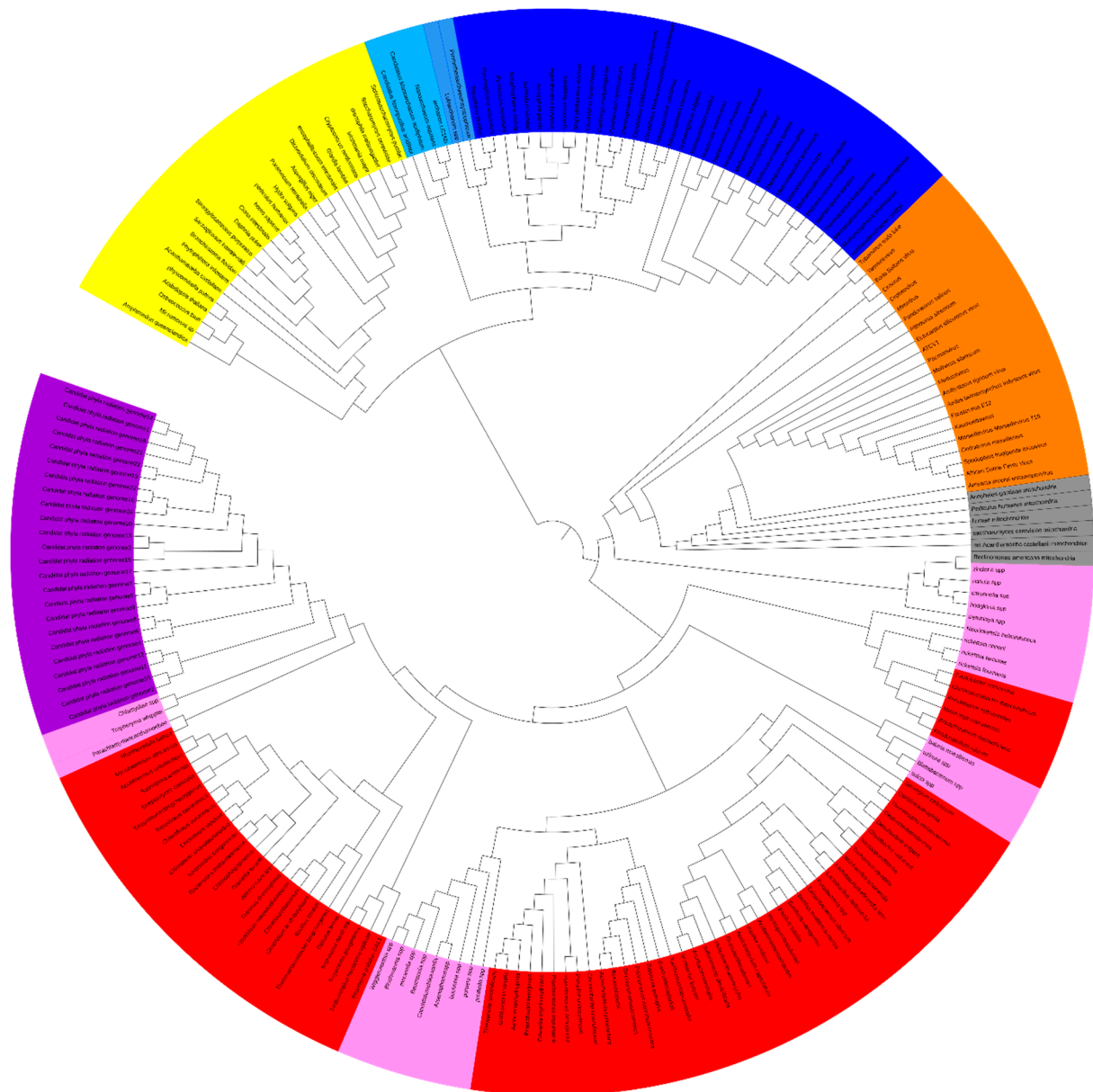
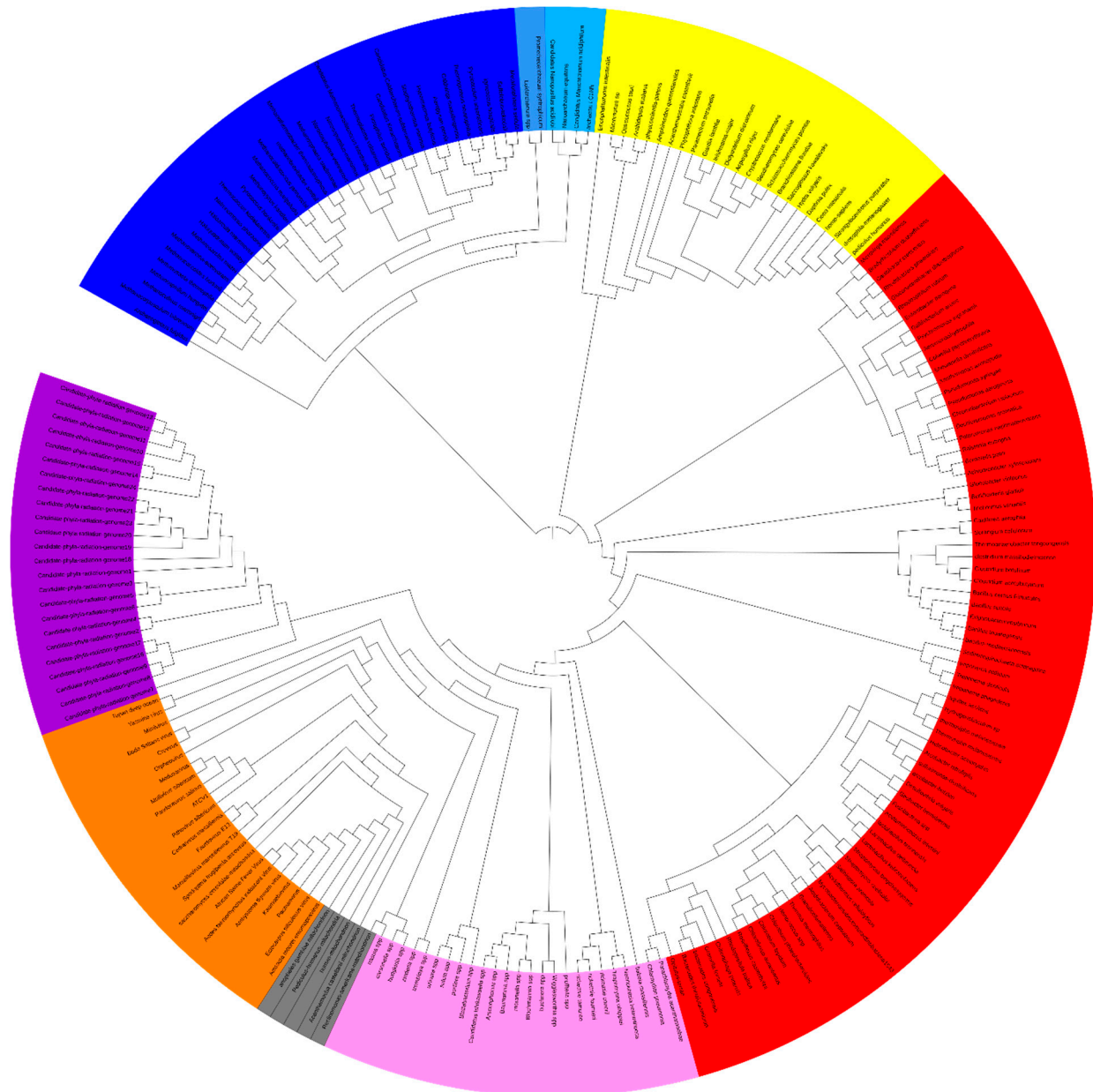


Hierarchical clustering by phyletic pattern based on the presence/absence of 180 translational Clusters of Orthologous Groups (COGs) of proteins.



Hierarchical clustering by phyletic pattern based on the presence/absence of 737 informational Clusters of Orthologous Groups (COGs) of proteins



Hierarchical clustering by phyletic pattern based on the presence/absence of 606 fold proteins superfamily.

