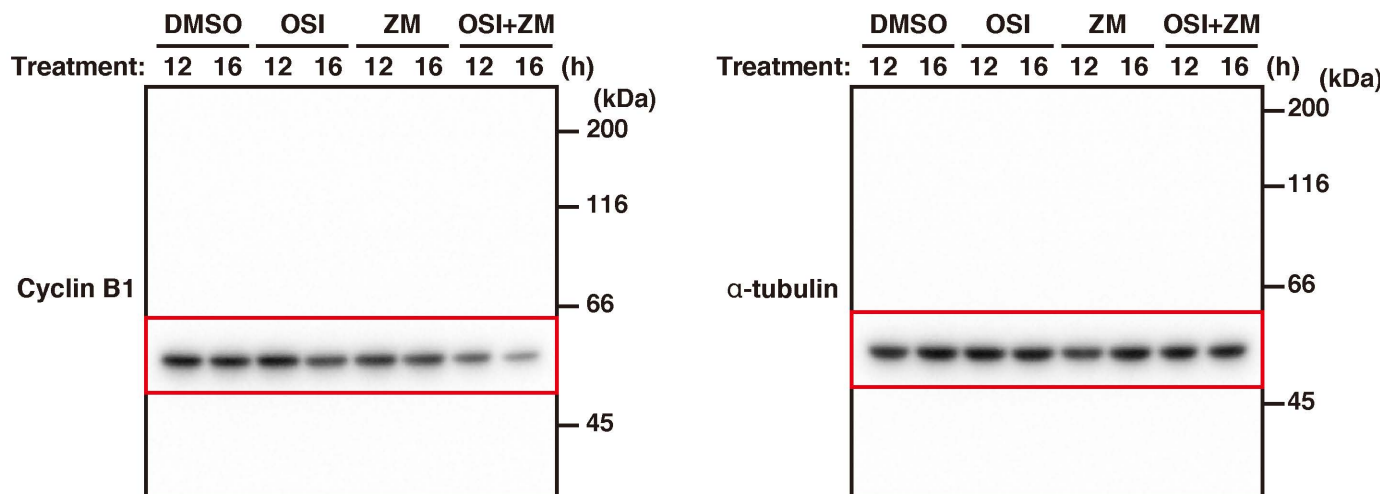
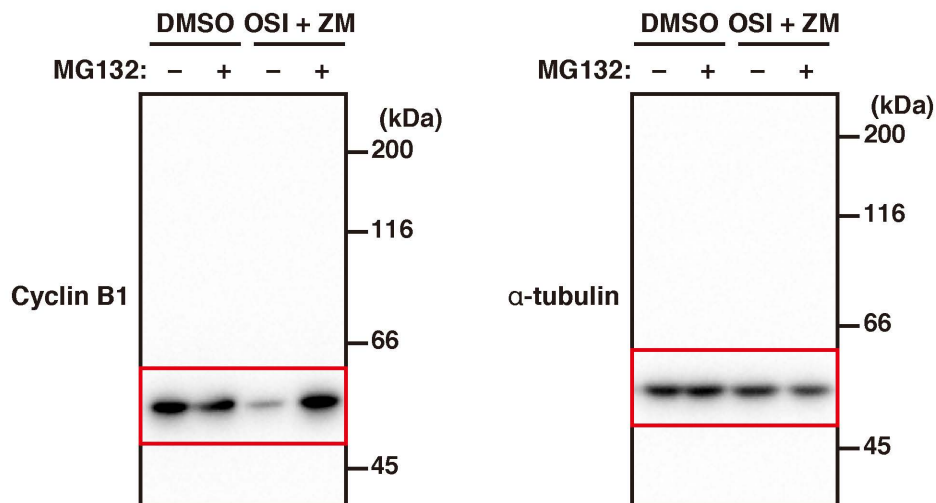


a

Full-length blots of Figure 5b.

b

Full-length blots of Figure 5d.

Figure S1. Full-length blots of Figure 5b and d.

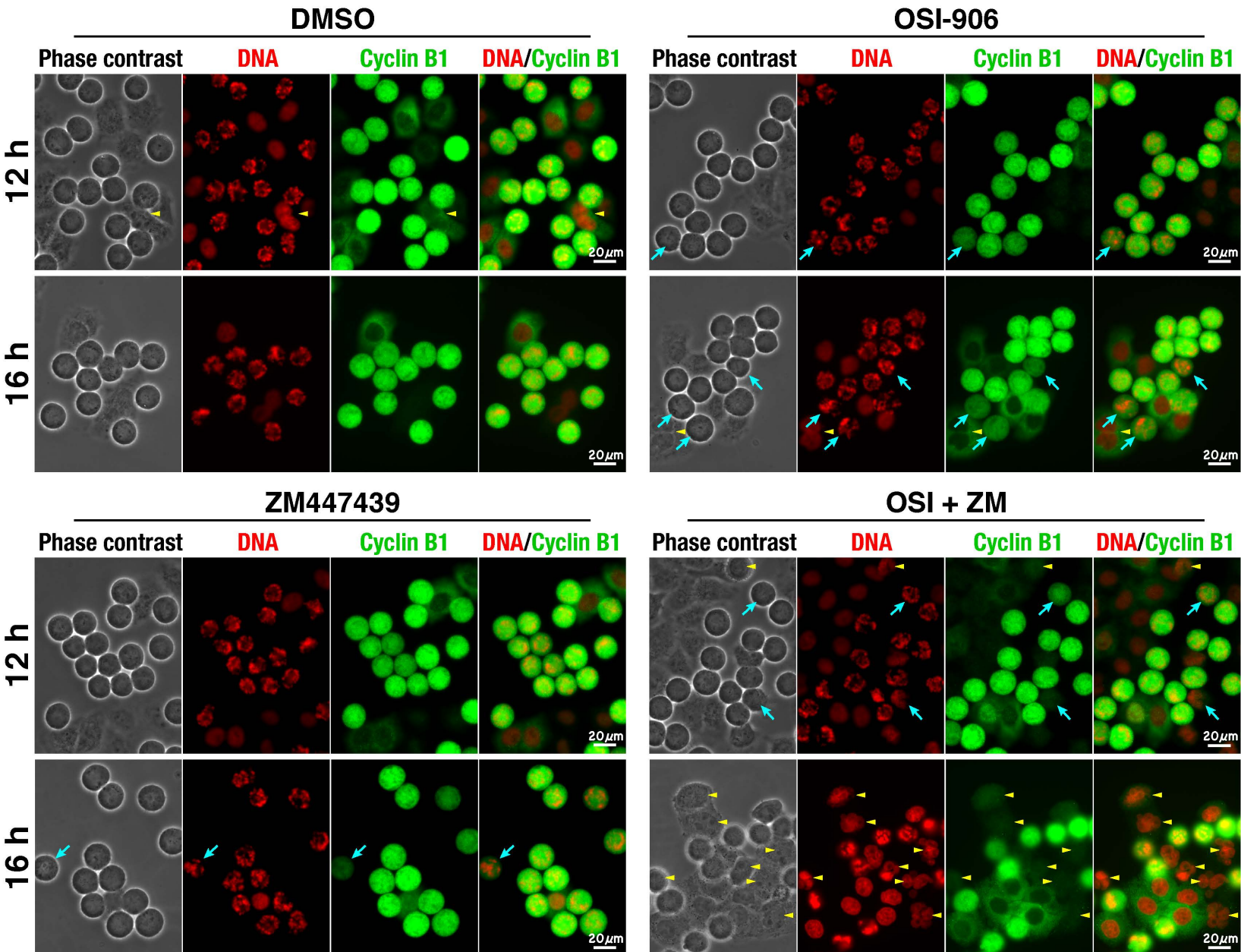


Figure S2. Combination of OSI-906 and ZM447439 in the presence of paclitaxel generates cells with aberrant-shaped nuclei via mitotic slippage. HeLa S3 cells were treated with 0.5 $\mu\text{g}/\text{ml}$ paclitaxel in the presence of OSI-906, ZM447439, or their combination (OSI + ZM). DMSO was used as solvent control. At 12 and 16 h after the start of treatment, cells were fixed and stained for cyclin B1 (green) and DNA (red). Representative images are shown. Blue arrows indicate M phase cells with lower expression levels of cyclin B1. Yellow arrowheads indicate cells with aberrant nuclear morphologies. Scale bars, 20 μm .