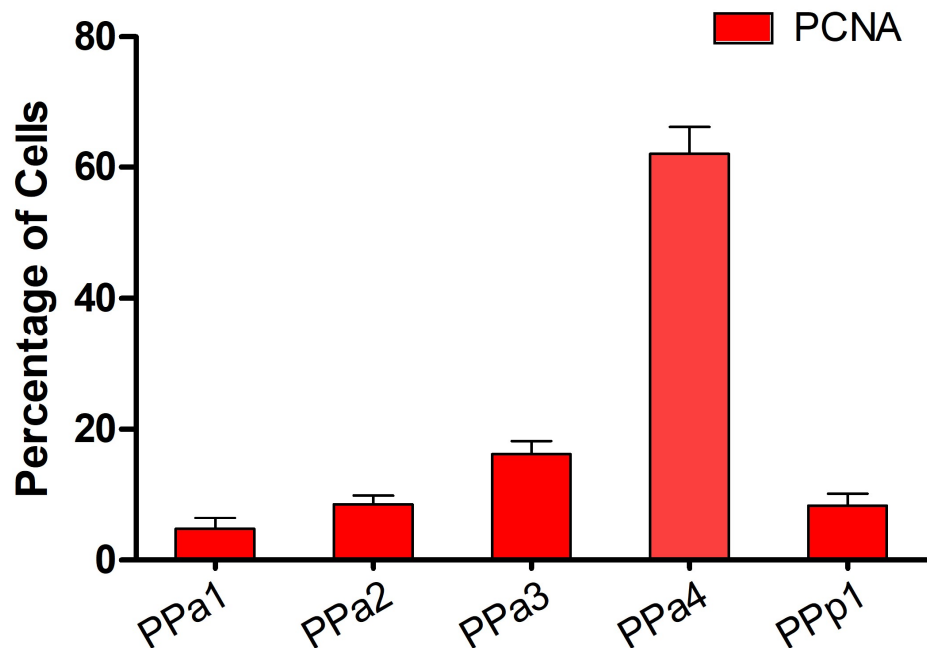
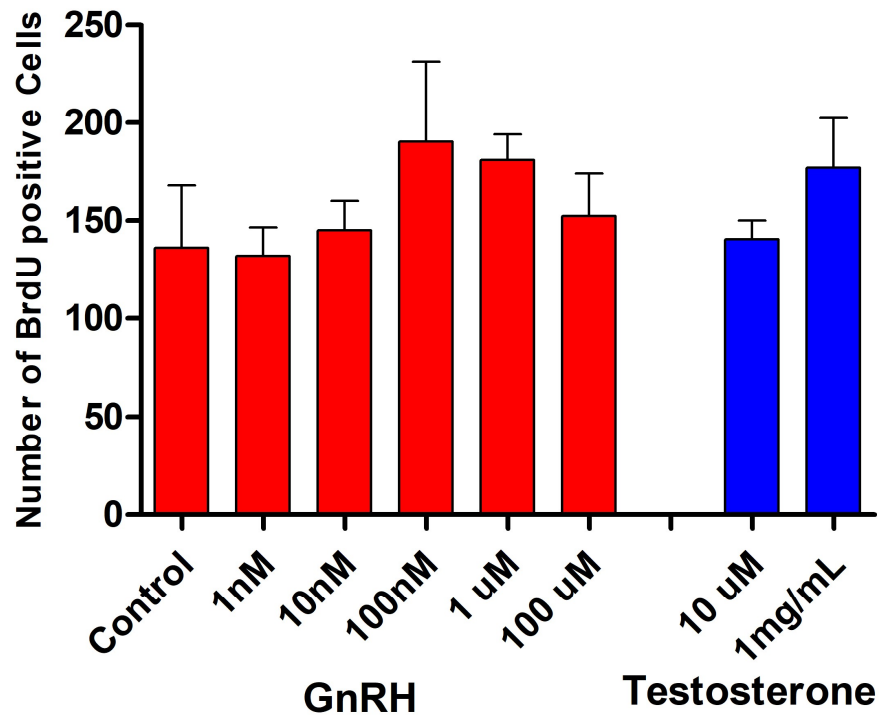


SUPPLEMENTAL FIGURES

Ceriani and Whitlock (ijms-1195081)



Supplemental Figure S1. Quantification of the distribution of PCNA⁺ cells in the POA. Percentage of PCNA⁺ cells located in representative sections of the POA (PPa1, PPa2, PPa3, PPa4 and PPp1). For each representative section of the POA, a number of transverse paraffin sections (PPa1 = 4, PPa2 = 8, PPa3 = 10, PPa4 = 14 and PPp1 = 4) of 5 μ m were obtained and the PCNA⁺ cells were counted.



Supplemental Figure S2. Determination of optimal GnRH and testosterone concentration. Optimal hormone concentration was determined according to the increase of number of BrdU⁺ cells in treated versus control fish. Three fish were used for each treatment. The BrdU⁺ cells were counted in cryosections of 20 μ m of the POA (10 sections).