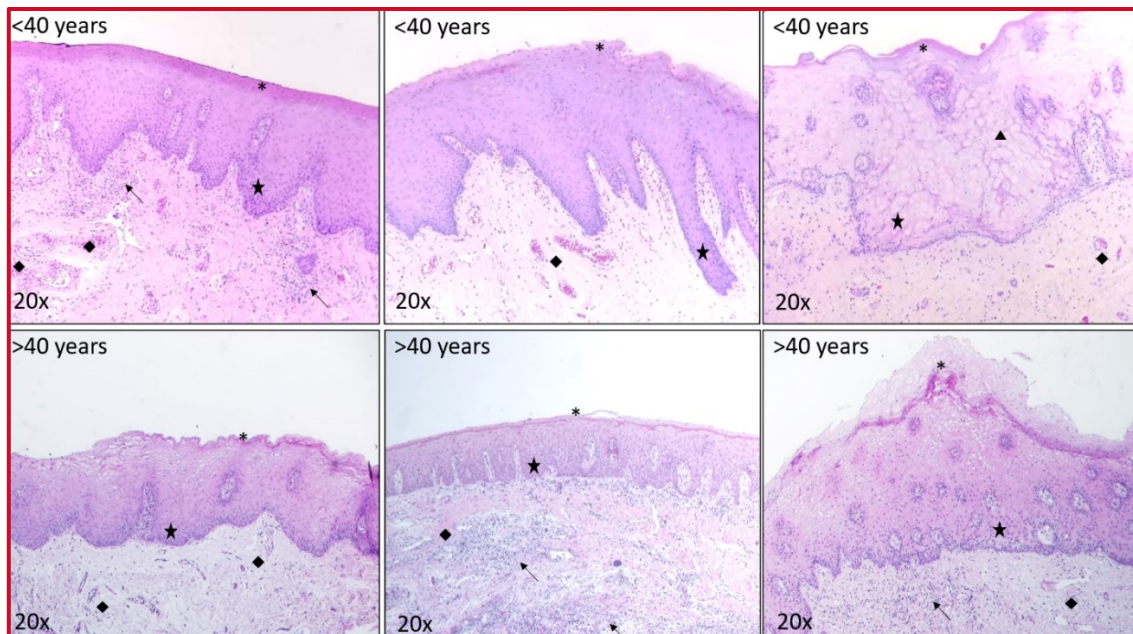
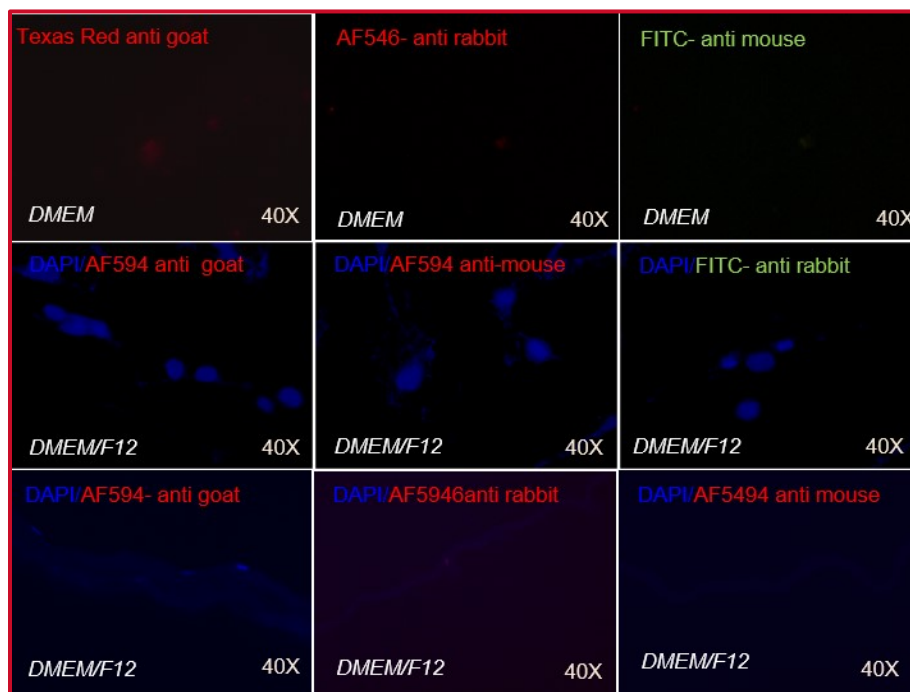


SUPPLEMENTARY MATERIAL



Supplementary Figure 1. Normal mucosa. Biopsies from patients taken for hOMSC isolation, showing stratified parakeratinized epithelium (star), with parakeratin (asterisk), some showed intracellular edema (triangle), normal vascularization (rhombus), and mild to moderate chronic inflammatory infiltrate showing a diffuse or patch pattern (arrow).



Supplementary Figure 2. Negative controls for immunofluorescence