

Supplementary data

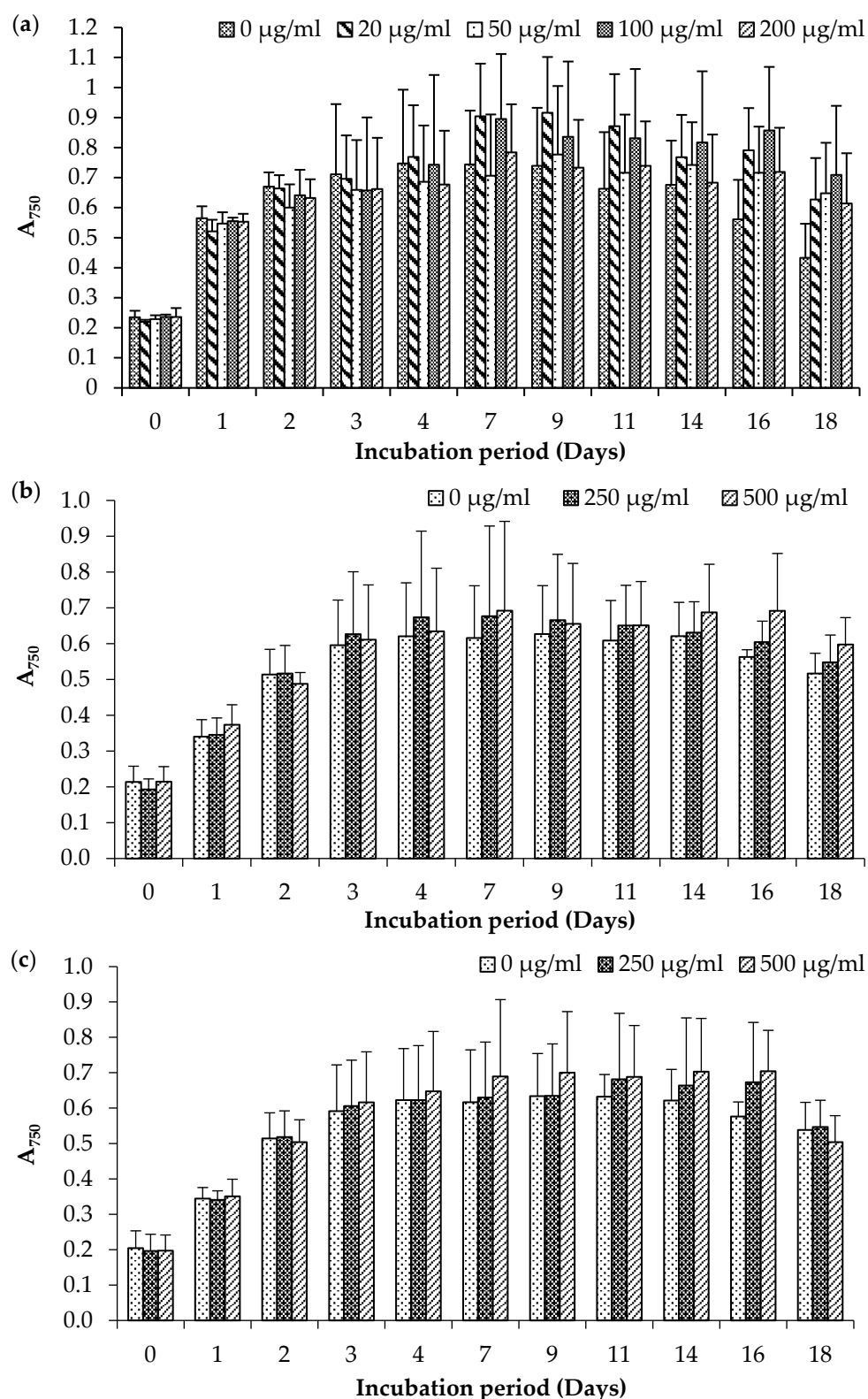


Figure S1. Growth inhibitory effects of different antibiotics on *E. gracilis*. (a) kanamycin (0, 20, 50, 100, and 200 $\mu\text{g mL}^{-1}$), (b) ticarcillin (0, 250, and 500 $\mu\text{g mL}^{-1}$), and (c) cefotaxime (0, 250, and 500 $\mu\text{g mL}^{-1}$). The growth of *Euglena* was assayed by measuring the culture absorbance at 750 nm. Each value indicates the mean \pm standard deviations of three replicates.

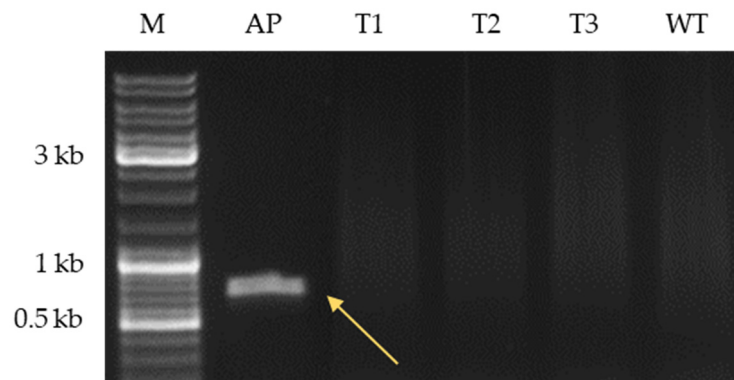


Figure S4. PCR-based confirmation of the absence of *A. tumefaciens* contamination in ticarcillin/clavulanate-treated transformants. PCR analysis was done using *VirC* gene-specific primers. An expected amplicon of 730 bp is observed only in the positive control sample. M - GeneRuler DNA Ladder Mix; AP - positive control (*Agrobacterium* Ti-plasmid); T1-T3 - genomic DNA from transformants; WT - genomic DNA from wild-type.

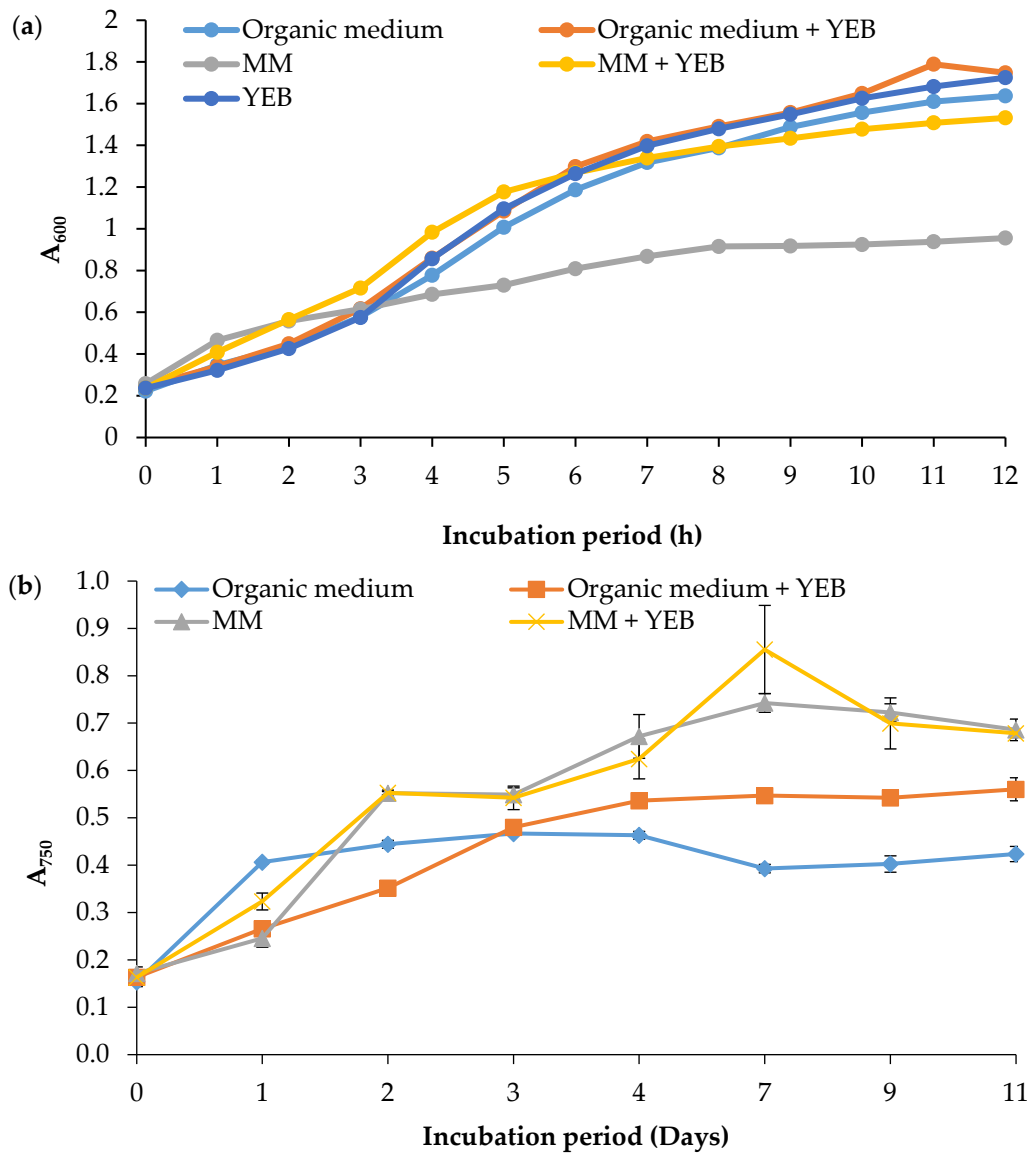


Figure S5. Growth behavior of (a) *A. tumefaciens* strain LBA4404 and (b) *E. gracilis* in different co-cultivation media (viz. organic medium, MM, organic medium + YEB, MM + YEB). Growth was assayed by measuring the absorbance of the cultures *A. tumefaciens* LBA4404 and *E. gracilis* at 600 nm and 750 nm, respectively, and the mean of three replicates was calculated.

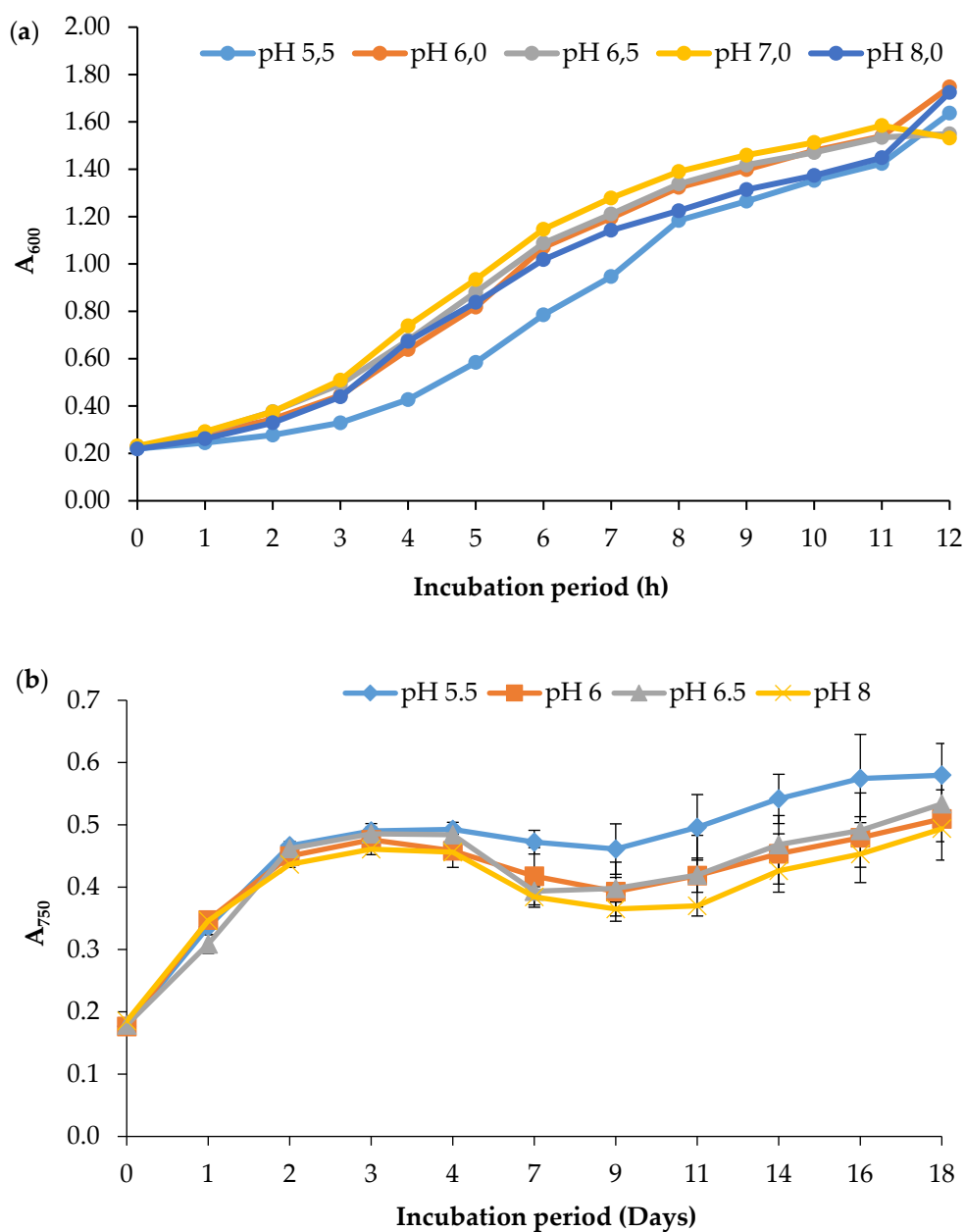


Figure S6. Growth behavior of (a) *A. tumefaciens* strain LBA4404 and (b) *E. gracilis* in the organic medium of different pH values (5.5, 6.0, 6.5, 7.0, and 8.0). Growth was assayed by measuring the absorbance of the cultures *A. tumefaciens* LBA4404 and *E. gracilis* at 600 nm and 750 nm, respectively, and the mean of three replicates was calculated.

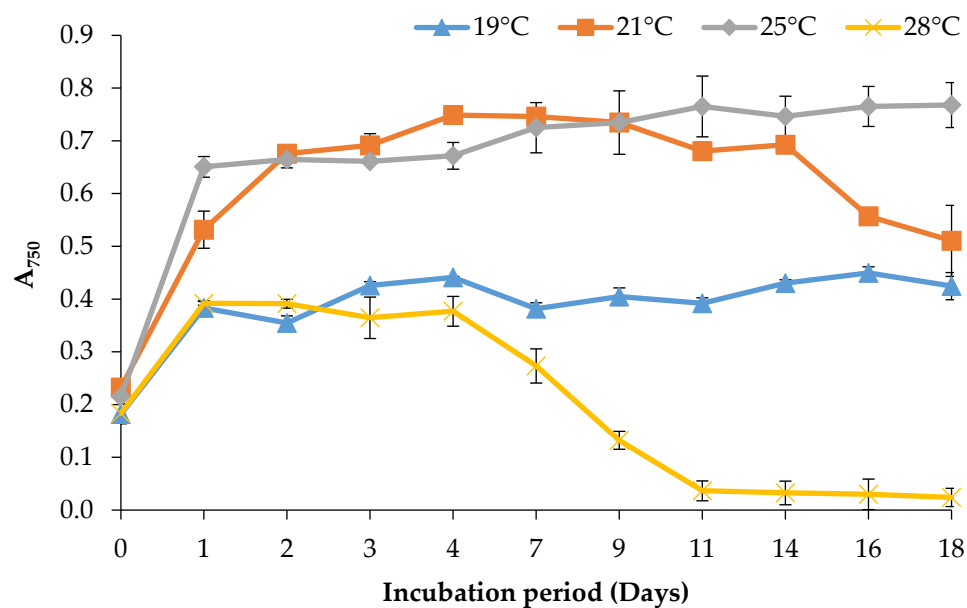


Figure S7. Growth of *E. gracilis* in the organic medium at different temperatures (19, 21, 25, and 28 °C). Growth was assayed by measuring the culture absorbance at 750 nm, and the mean of three replicates was calculated.

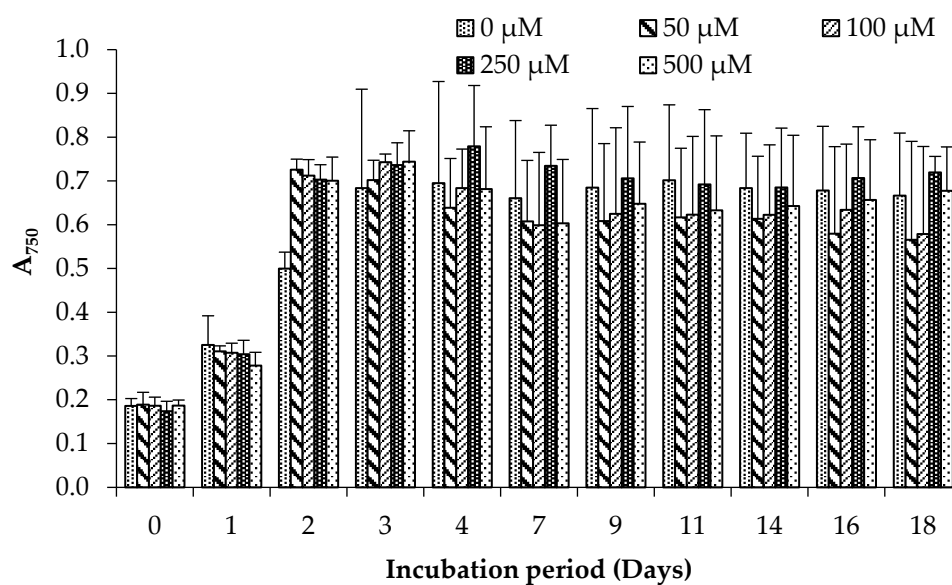


Figure S8. Growth of *E. gracilis* in the organic medium supplemented with various concentrations of acetosyringone. Growth was assayed by measuring the culture absorbance at 750 nm, and the mean of three replicates was calculated.