



Figure S1. Western blotting of GALR1 and GALR2 in porcine myometrium and relevant positive control. Panel A shows blots for GALR1 antibody: specific bands at 40 kDa are visible in porcine myometrium (line 1) and duodenum (line 2). Panel B shows blots for GALR2 antibody: specific bands at 42 kDa are visible in porcine myometrium (line 1) and duodenum (line 2). M - marker.

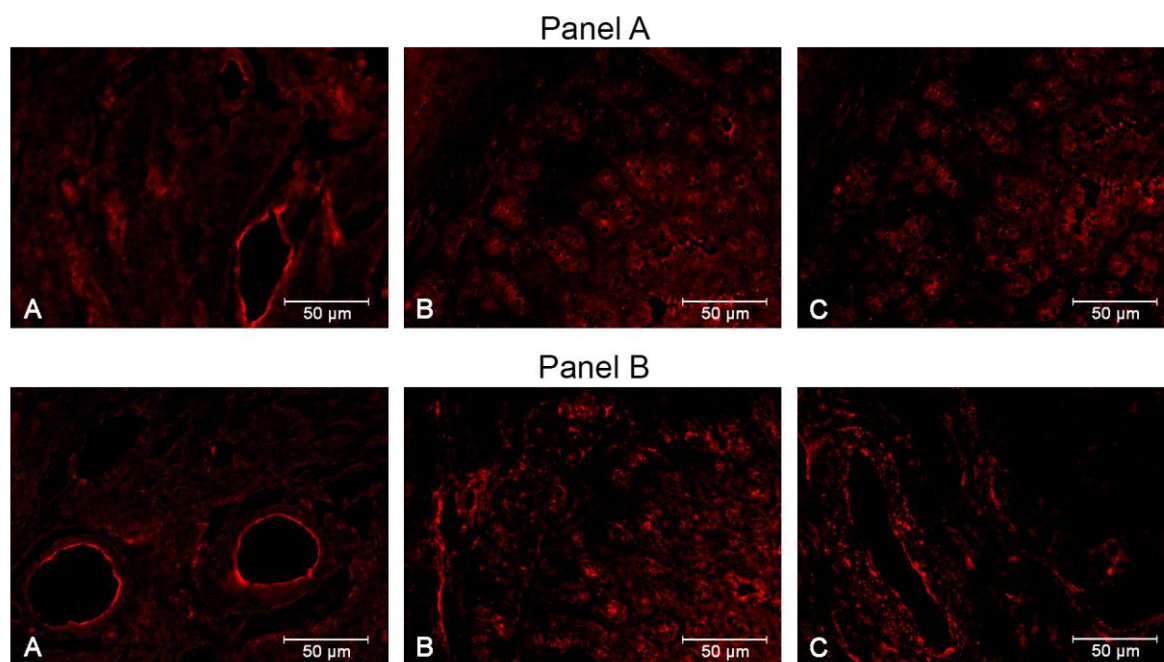


Figure S2. The immunoexpression of GALR1 and GALR2 in porcine myometrium and relevant positive control. Panel A shows the presence of GALR1 in porcine myometrium (A) and duodenum (B, C). Panel B shows the presence of GALR2 in porcine myometrium (A) and duodenum (B, C).