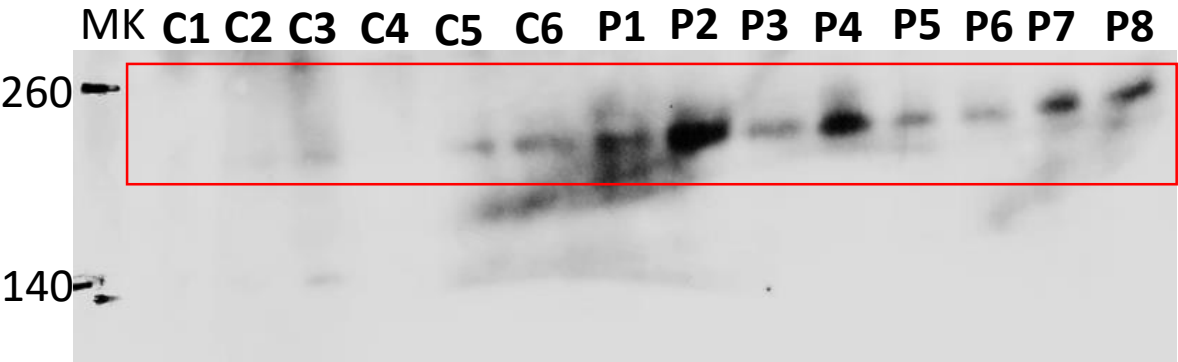


Figure 1

MUC16 (~ 200 KDa)

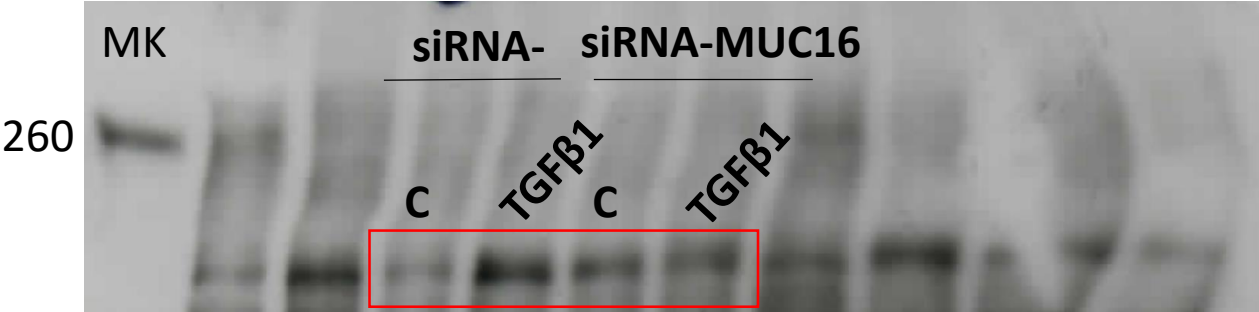


β-actin (~ 42 KDa)



Figure 2

Col type I (139 KDa)



β-actin (~ 42 KDa)

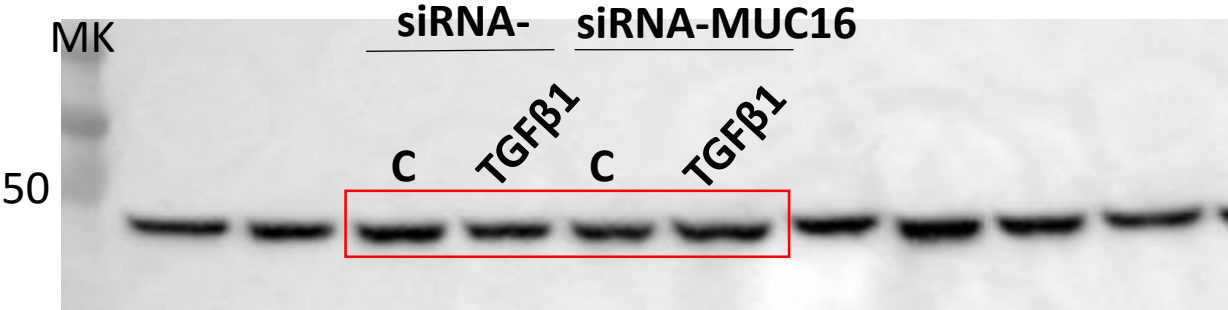
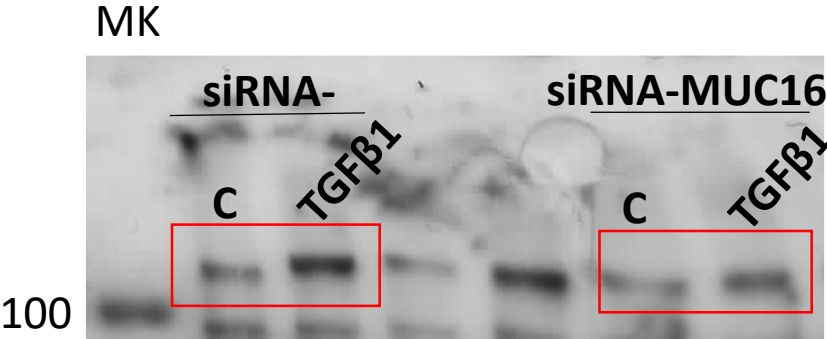


Figure 3

Col type I (139 KDa)



β-actin (~ 42 KDa)

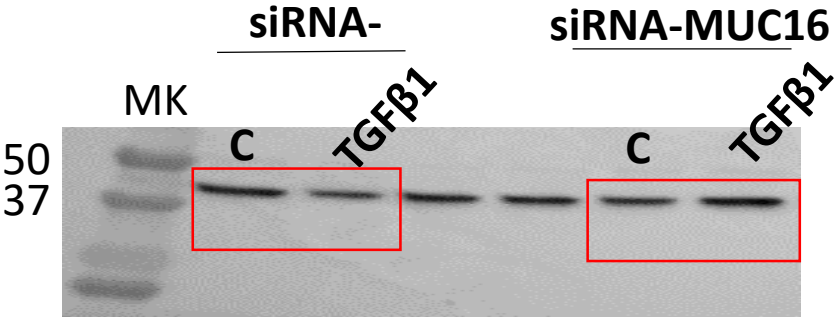
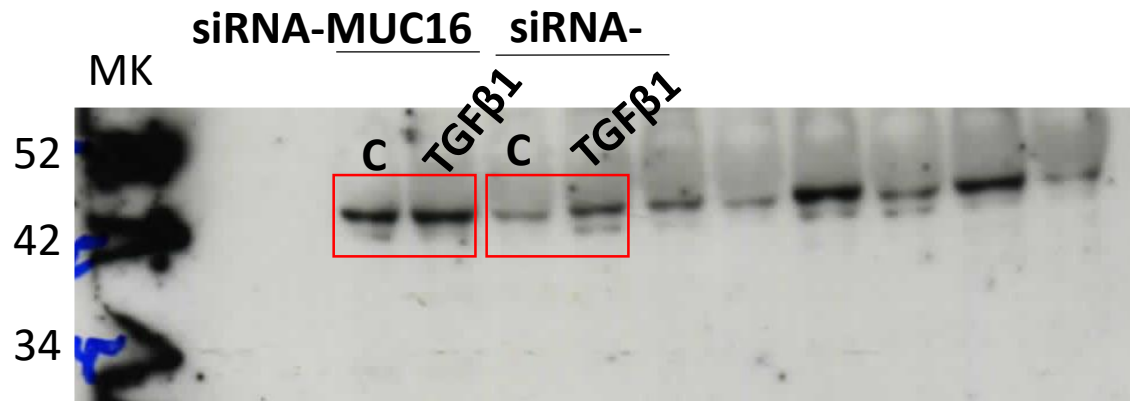


Figure 5

A549

P-Smad3 (~50 KDa)



β-catenin (~ 96 KDa)

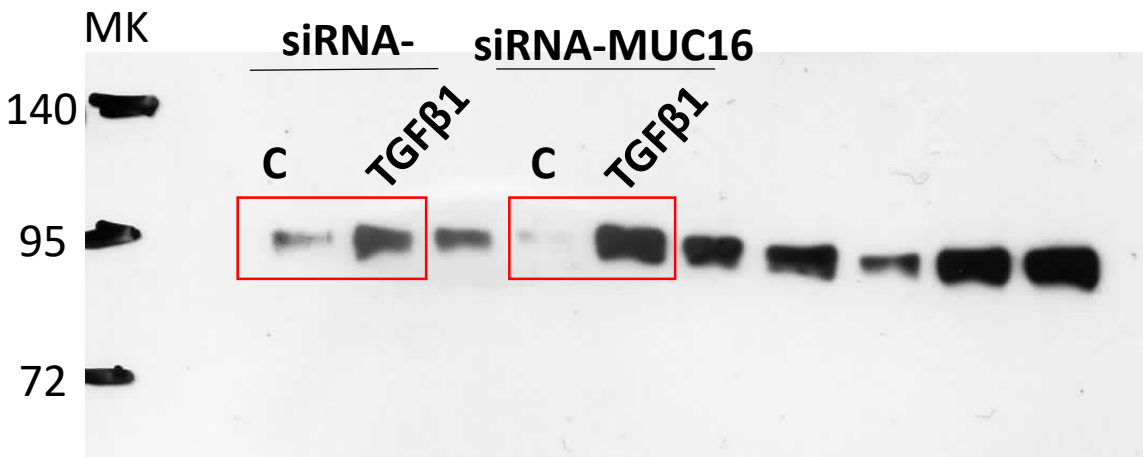
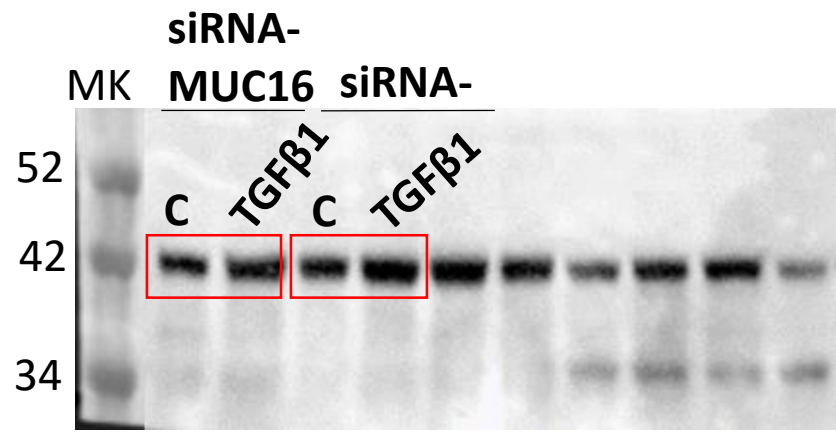


Figure 5

A549

Smad3 (~50 KDa)



β -actin (~ 42 KDa)

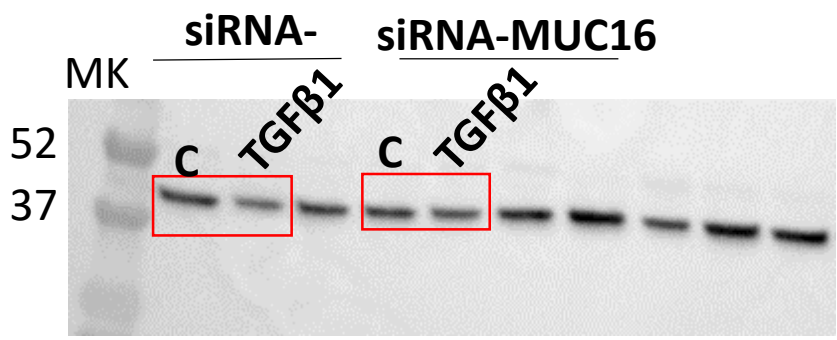
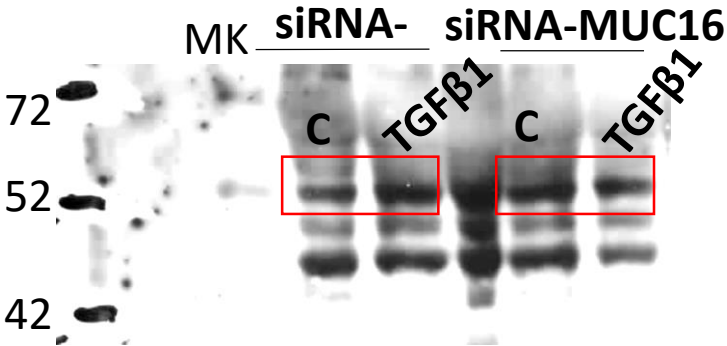


Figure 5

MRC5

P-Smad3 (~50 KDa)



β-catenin (~ 96 KDa)

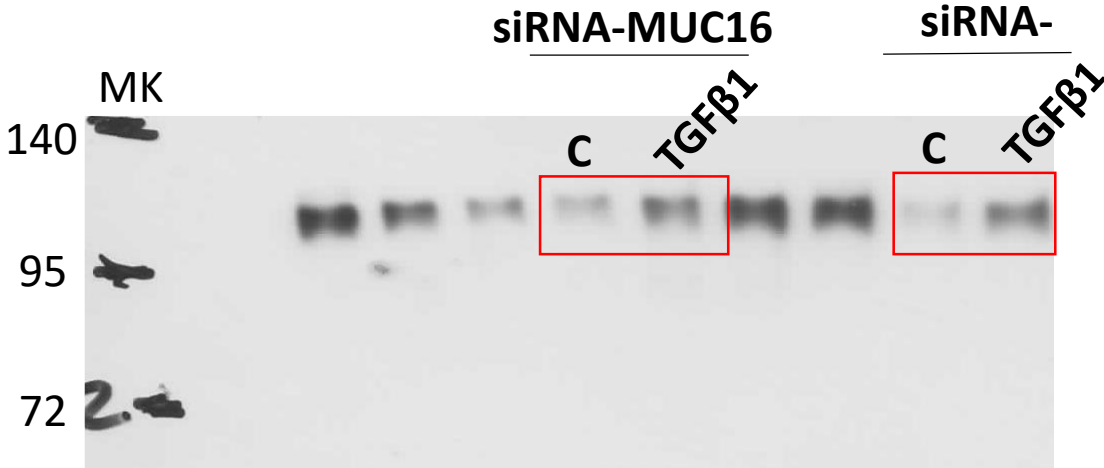
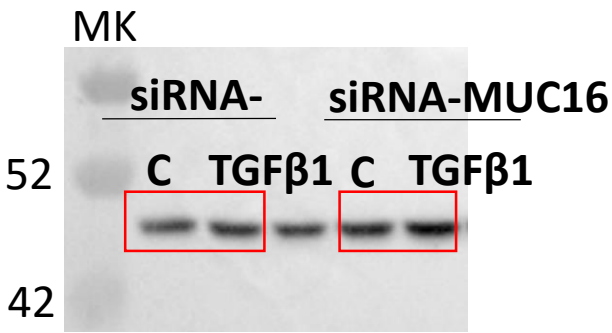


Figure 5
MRC5
Smad3 (~50 KDa)



β-actin (~ 42 KDa)

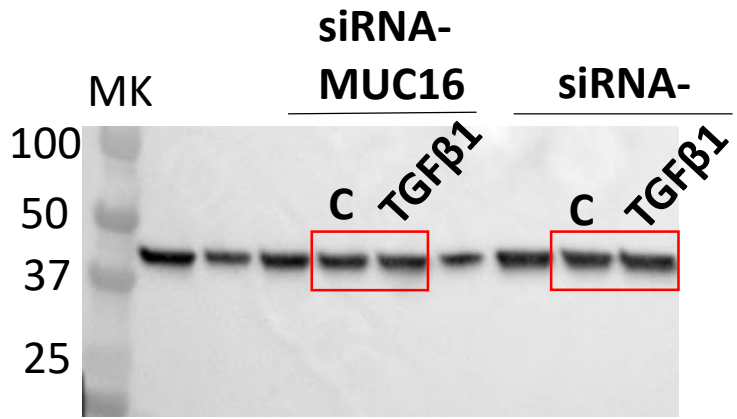
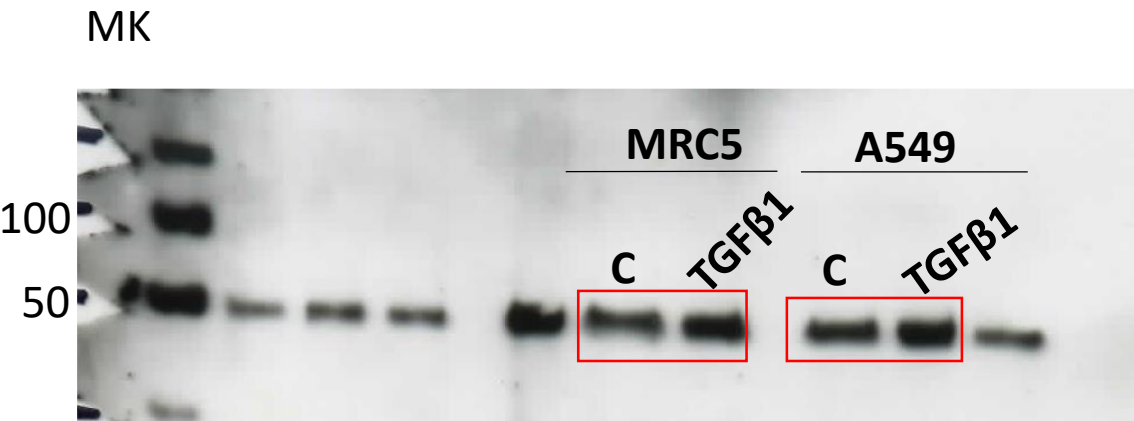


Figure 5

IP MUC16; A549 IP MUC16; MRC5
P-Smad3 (~50 KDa)



IP MUC16; A549 IP MUC16; MRC5
MUC16 (~200 KDa)

