

Supplemental figure legends

Fig S1. T cell populations, survival and tumor development of CLL-transplanted OT1/OT2, OT1 Rag/OT2 Rag and WT mice. (A) Flow cytometry data of peripheral blood samples showing CD4/8 and Vb5^{pos/neg} T cell distribution in non-transplanted OT1/OT2, OT1 Rag/OT2 Rag and WT mice. (B) Survival curves of CLL-transplanted OT1/OT2, OT1 Rag/OT2 Rag and WT mice and tumor development in OT1/OT2, OT1 Rag/OT2 Rag and WT mice depicted as percentage of lymphocytes.

Fig S2. Depletion of T cells via pan B/CLL cell MACS isolation. T cell (CD5^{pos}), B cell (CD19^{pos}) and CLL cell (CD5^{pos} CD19^{pos}) abundance in spleen samples of CLL-transplanted (Tx) and non-transplanted (no Tx) WT mice before and post MACS.

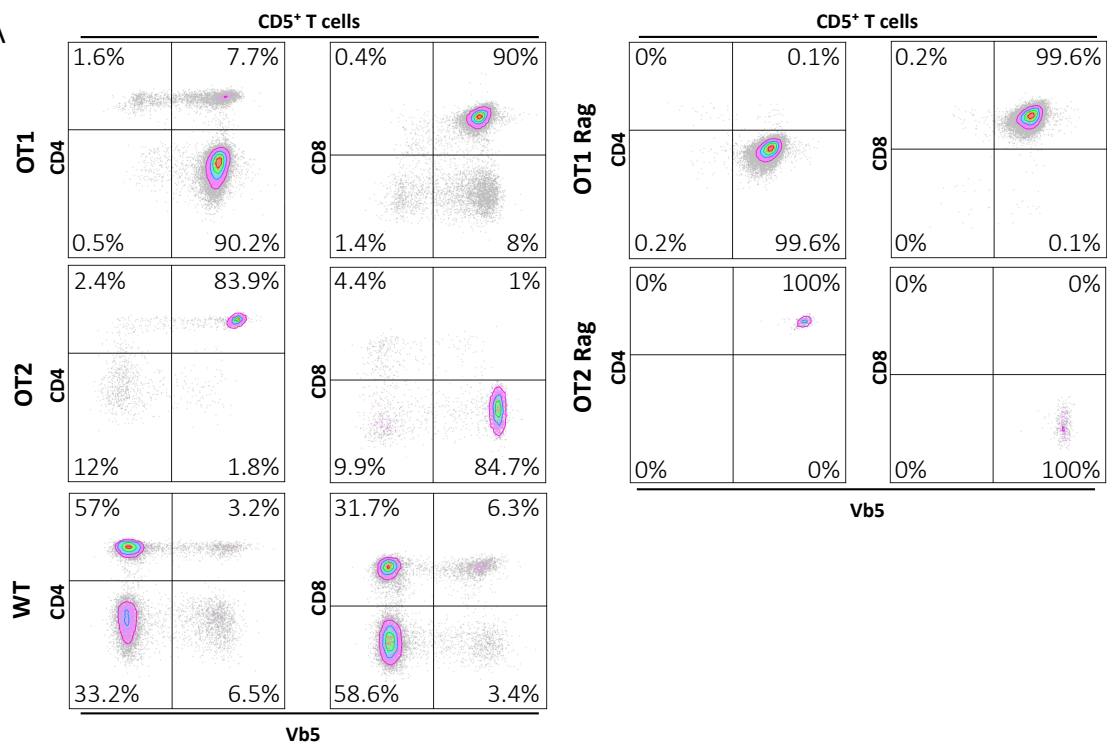
Fig S3. Endogenous T cell expansion in peripheral blood and spleen after CLL transplantation. (A) Percentage of non-CLL specific (Vb5^{pos}) T cells in serial peripheral blood samples before and after tumor transfer in OT1/OT2, OT1 Rag/OT2 Rag and WT mice. (B) Endogenous T cell fractions (Vb5^{neg}) in spleen samples of non-transplanted vs. CLL-transplanted (Tx) OT1/OT2, OT1 Rag/OT2 Rag and WT mice.

Fig S4. BCR analysis of CLL transplanted mice. BCR clonality of CLL tumors 703, C755, and 658 used for transplantation experiments and of tumor-receiving WT, OT1/OT2, OT1 Rag/OT2 Rag mice. Color code corresponds to different BCR CDR3 sequences depicted in legends. BCR clones < 1% were bioinformatically excluded.

Fig S5: PD1 expression based on flow cytometry, FACS and RNA-Seq analysis. (A) Flow cytometry analysis of PD1 levels of transplanted WT, OT1 and OT2 mice. PD1^{pos} fractions of WT CD4/CD8 (all Vb5^{pos}), OT1 CD8 (Vb5^{pos}) and OT2 CD4 (Vb5^{pos}) T cells is depicted, respectively. Left panels represent PD1 isotype control, right panels show actual PD1 measurements. (B) Gating strategy for cell sorting of Vb5^{pos/neg} PD1^{pos/neg} populations is shown. (C) Normalized PD1 expression levels from RNA sequencing of sorted WT CD8/CD4 PD1^{pos/neg} (n=3), OT1 CD8 PD1^{pos/neg} (n=2 for Vb5^{neg} populations, n=3 for Vb5^{pos} populations) and OT2 CD4 PD1^{pos/neg} (n=3) cell populations are shown. CPM: counts per million, FDR: false-positive detection rate

FIG S1

A



B

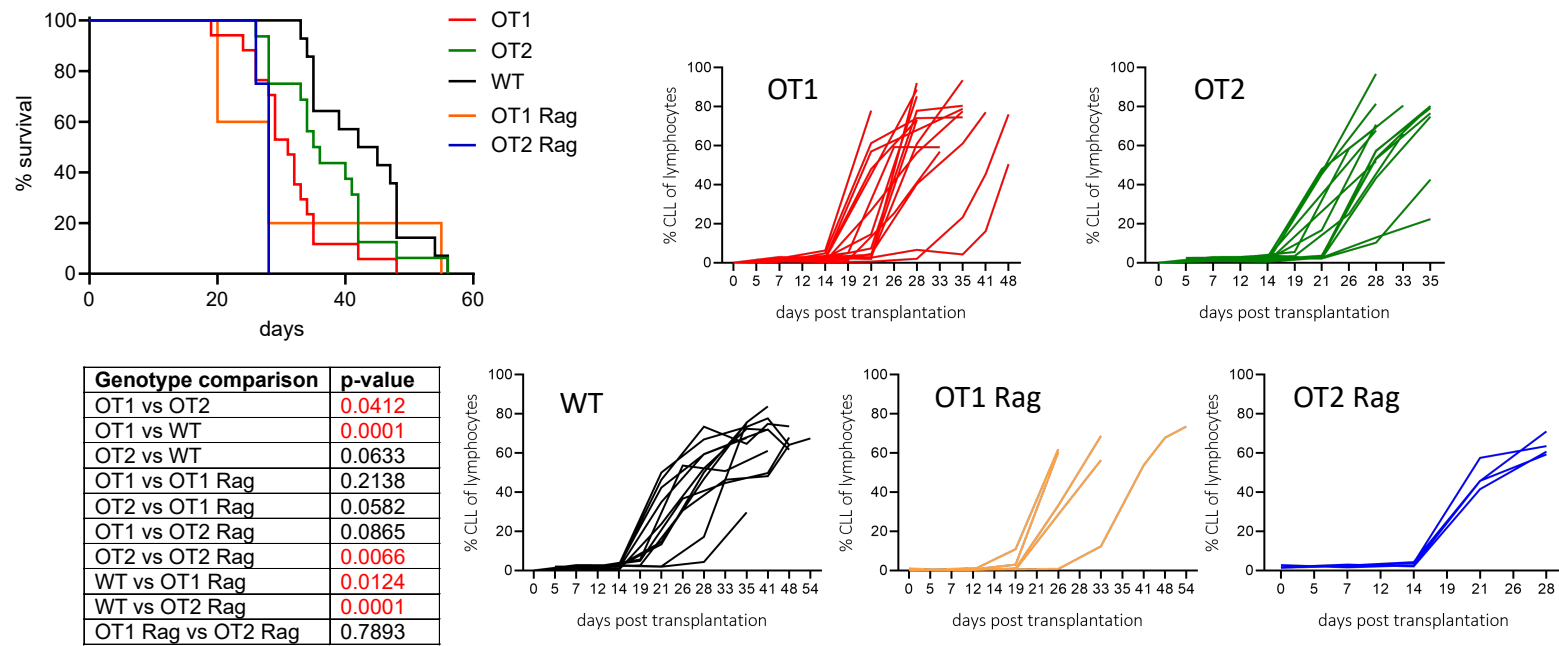


FIG S2

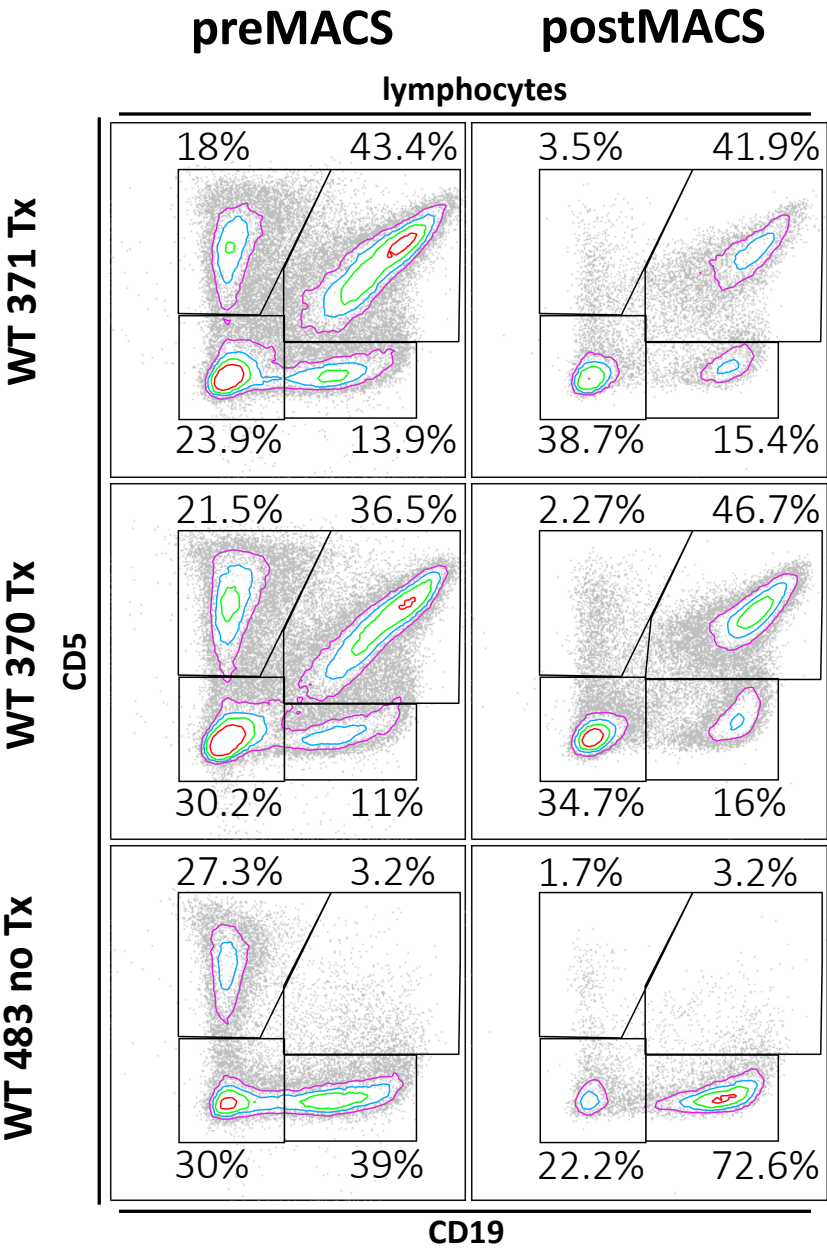


FIG S3

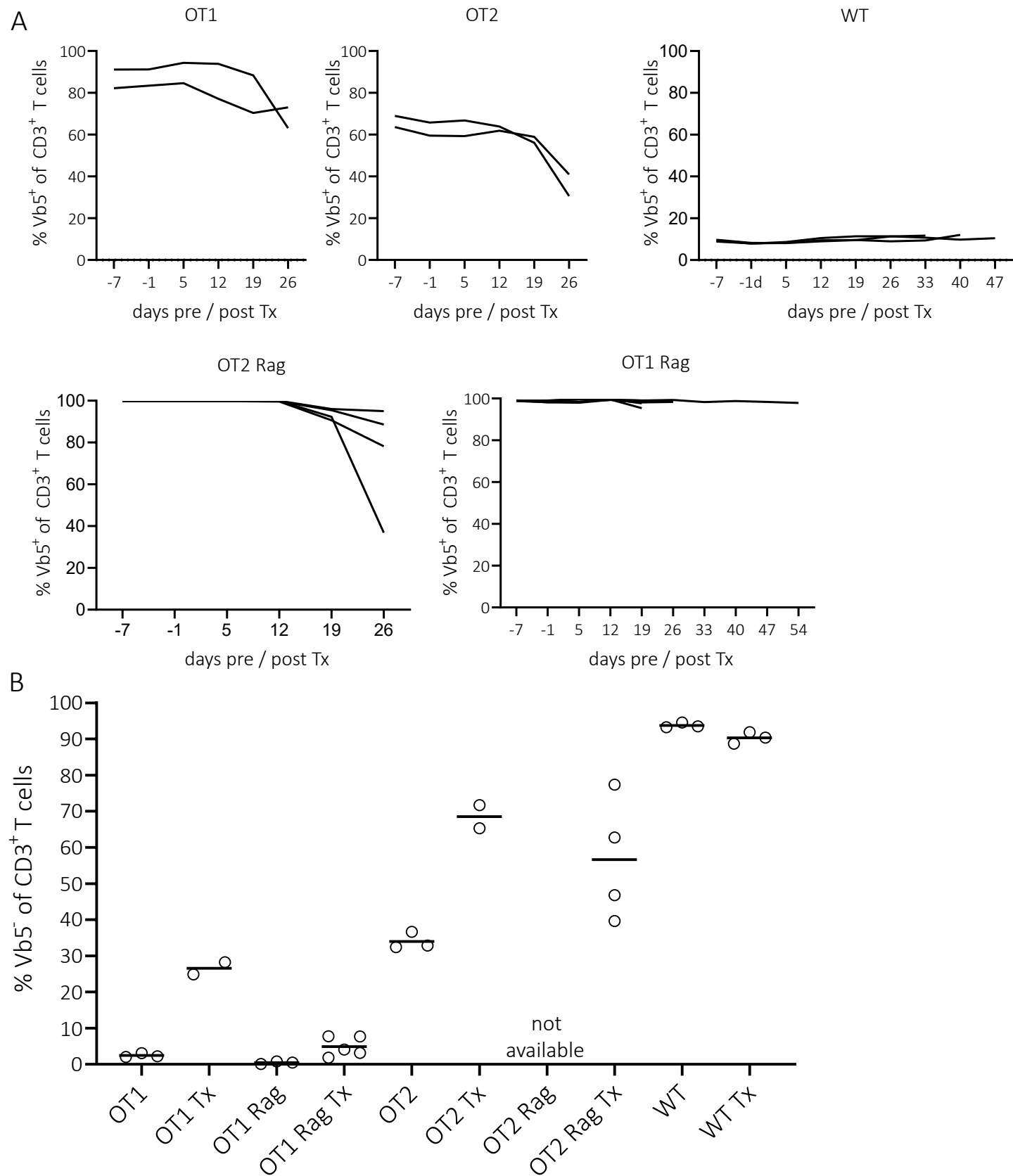


FIG S4

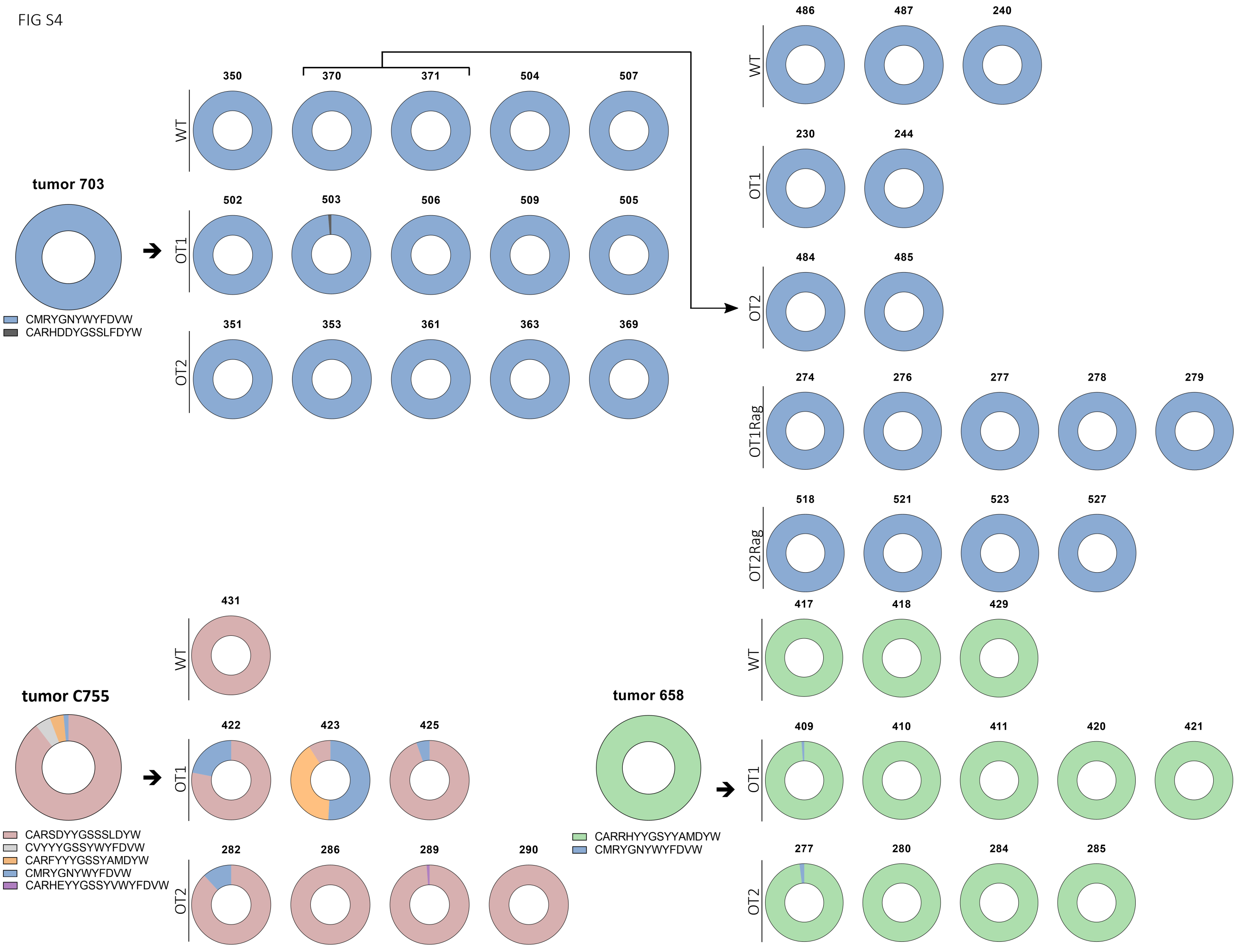
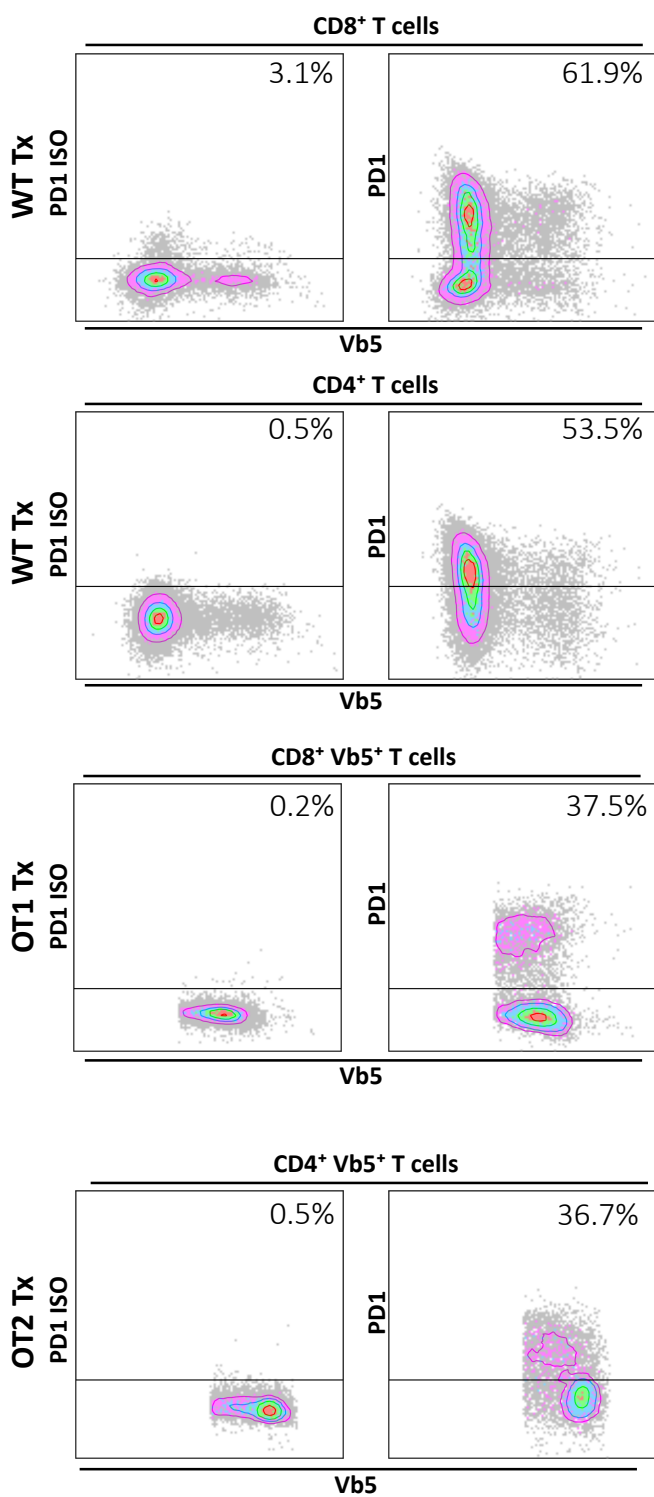


FIG S5

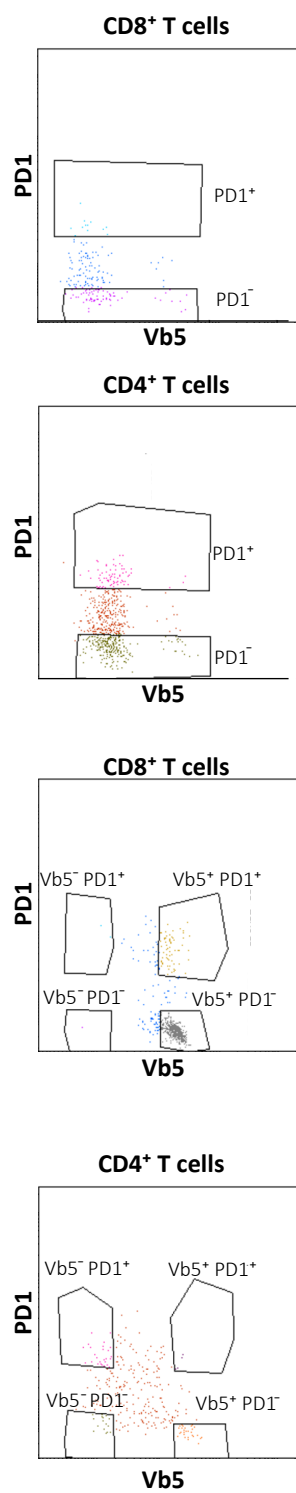
A

Flow cytometry



B

FACS



C

RNA-Seq

