

Figure S1. Representative bright field and fluorescent images of RT4 Schwann cells cultured on FLAT, ISO, and SCA chitosan membranes, at 72 hours. From left to right: bright field, GFP-positive cells (nuclei in green) and Propidium Iodide-positive dead cells (in red). Scale bar = 70 μ m (the scale bar is the same for all the images in this panel).

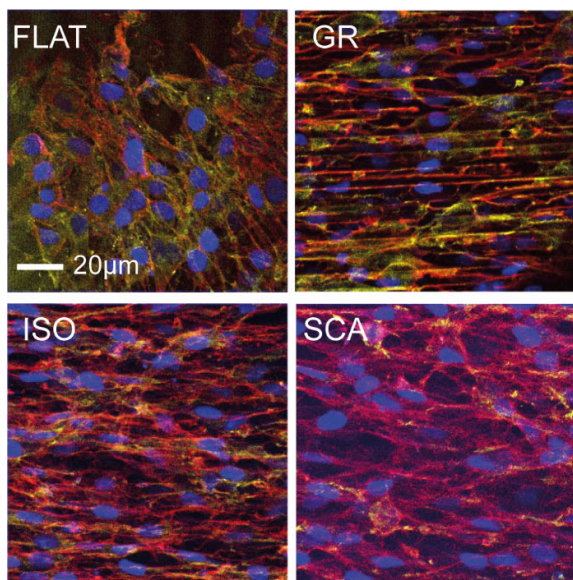


Figure S2. Merged channels of confocal images of RT4-Schwann cells cultured on GR, ISO, SCA and FLAT chitosan membranes: actin fibers (red), N-Cadherin (yellow), nuclei (blue); scale bar = 20μm.

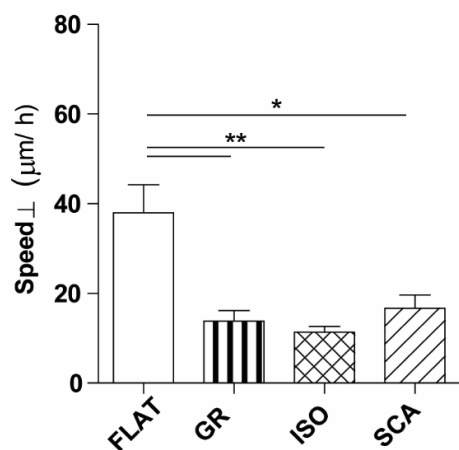


Figure S3. Average cell speed (μm/h) in the perpendicular direction (± 75-90°) in respect to pattern main direction: * $P < 0.05$, ** $P < 0.01$, One-Way ANOVA, Bonferroni's test.