

Figure S1: Score plot after PCA using QSARINS 2.2.4.

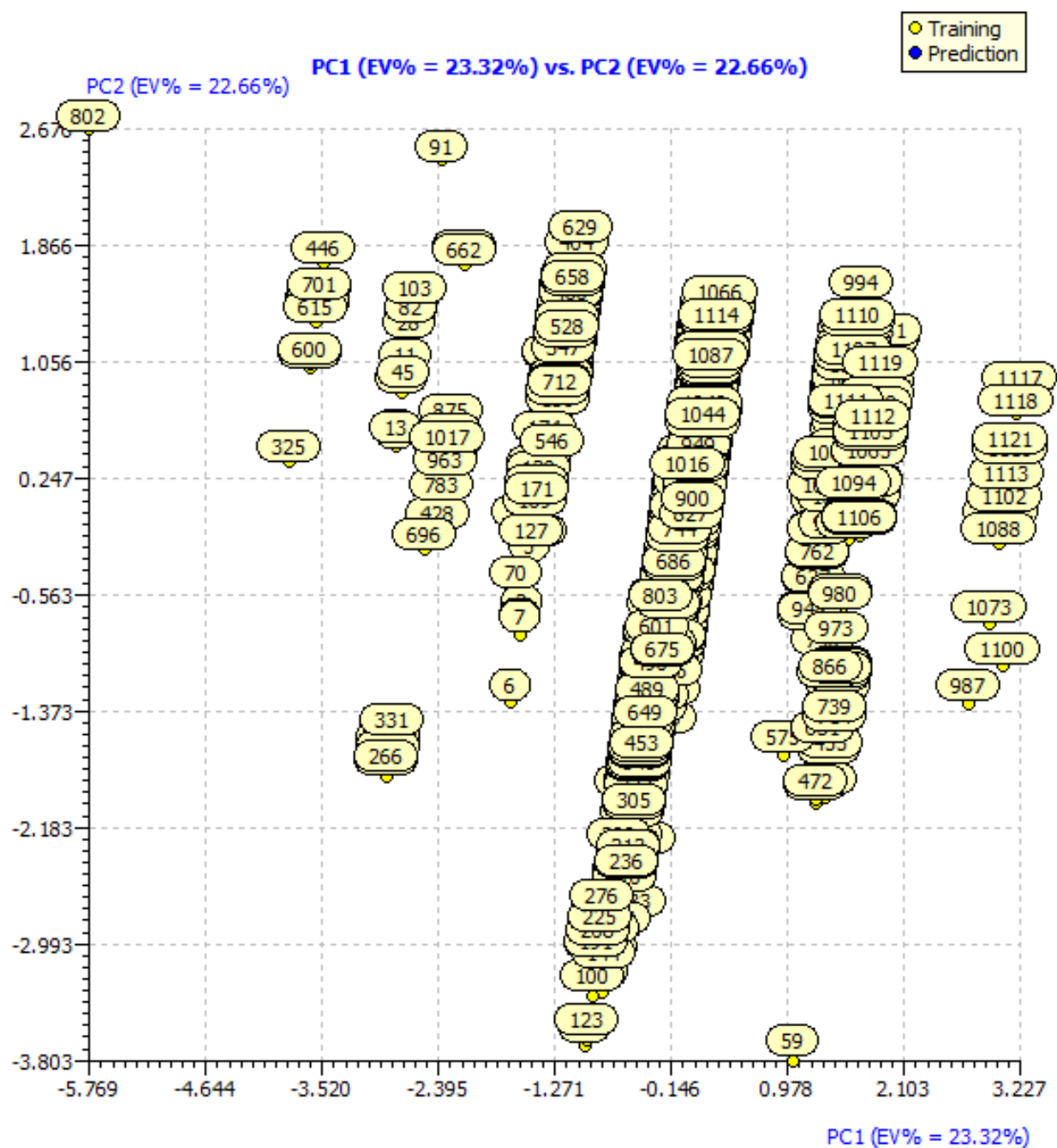


Figure S2: Loading plot after PCA using QSARINS 2.2.4.

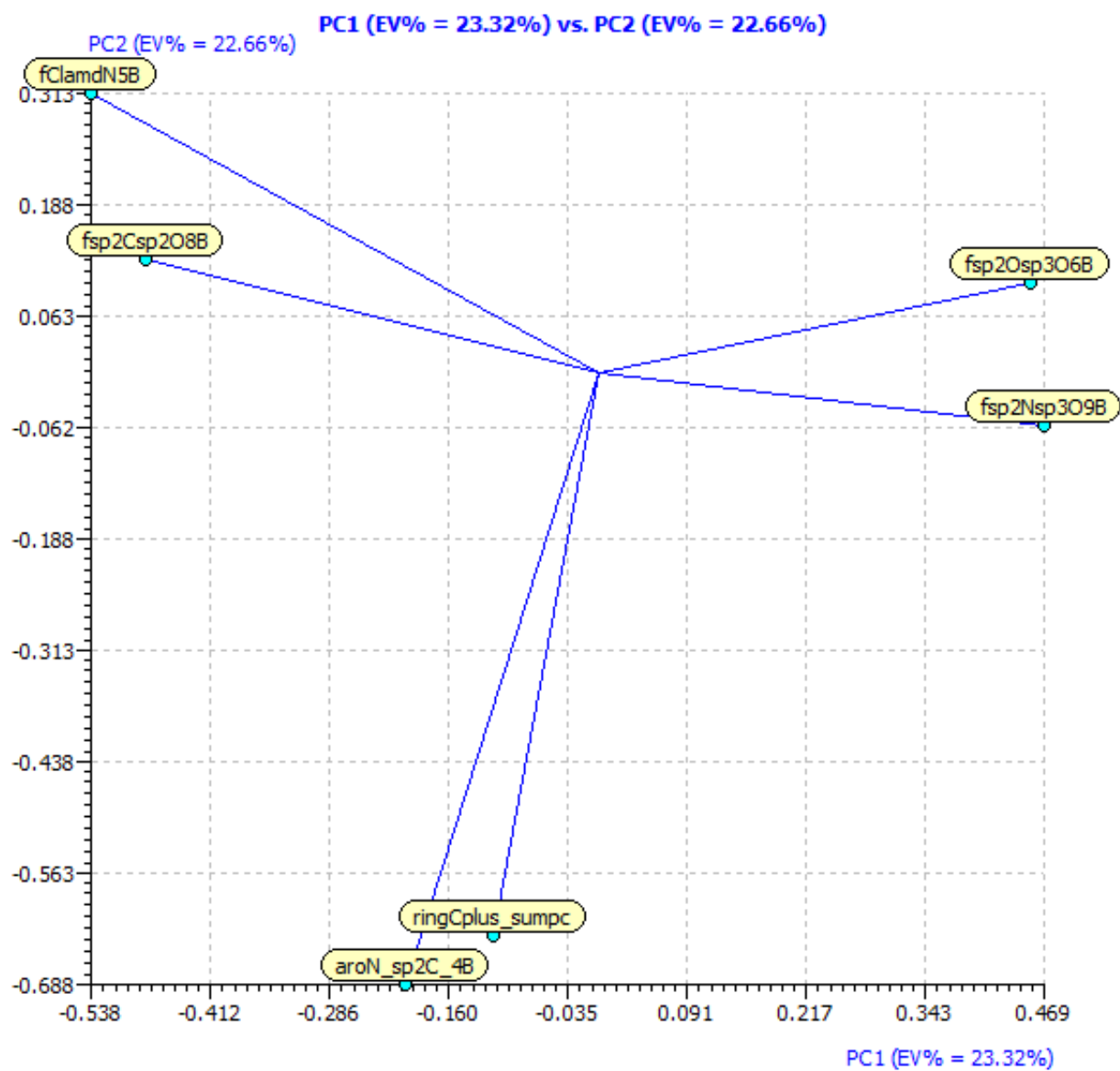


Table S1: Correlation matrix for molecular descriptors used in the present work.

	ringCplus sumpc	aroN sp2C 4B	fClamdN5B	fsp2Osp3O6B	fsp2Nsp3O9B	fsp2Csp2O8B
ringCplus sumpc	1.0000					
aroN sp2C 4B	0.3276	1.0000				
fClamdN5B	-0.0310	-0.0919	1.0000			
fsp2Osp3O6B	-0.0023	-0.1230	-0.1140	1.0000		
fsp2Nsp3O9B	0.1461	-0.1462	-0.1224	0.1690	1.0000	
fsp2Csp2O8B	0.1302	-0.0641	0.2671	-0.0338	-0.0648	1.0000

Different validation parameters for model-1:

$R^2_{tr} = 0.831$, $R^2_{adj.} = 0.83$, $LOF = 0.233$, $K_{xx} = 0.188$, $\Delta K = 0.07$, $RMSE_{tr} = 0.476$, $MAE_{tr} = 0.38$, $RSS_{tr} = 203.239$,
 $CCC_{tr} = 0.908$, $s = 0.478$, $F = 731.048$, $R^2_{cv} (Q^2_{loo}) = 0.829$, $RMSE_{cv} = 0.479$, $MAE_{cv} = 0.383$, $PRESS_{cv} = 206.131$,
 $CCC_{cv} = 0.907$, $Q^2_{LMO} = 0.828$, $R^2_{Yscr} = 0.007$, $Q^2_{Yscr} = -0.009$, $RMSE_{ex} = 0.526$, $MAE_{ex} = 0.417$, $PRESS_{ext} = 61.945$,
 $R^2_{ex} = 0.783$, $Q^2-F^1 = 0.782$, $Q^2-F^2 = 0.782$, $Q^2-F^3 = 0.794$, $CCC_{ex} = 0.874$, $R^2-ExPy = 0.783$, $R'^2_o = 0.704$, $k' = 0.996$,
 $1-(R^2/R'^2_o) = 0.101$, $r'^2_m = 0.563$, $R_o^2 = 0.782$, $k = 0.999$, $1-(R^2-ExPy/R_o^2) = 0.001$, $r^2_m = 0.76$