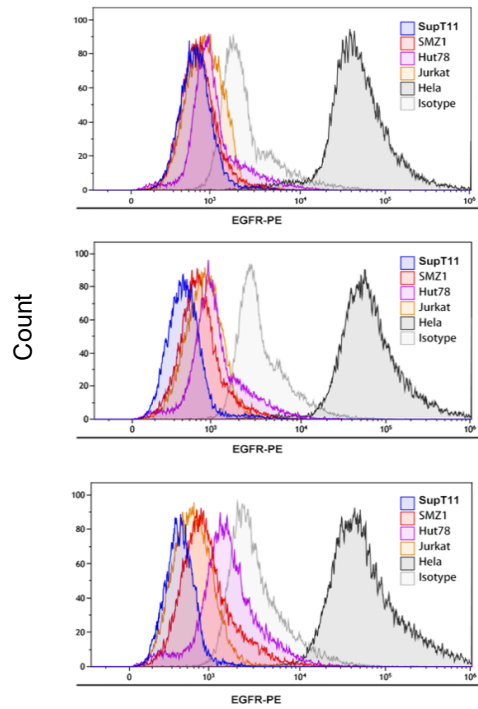


Supplementary Figure S1:



SF1: EGFR expression in T-cell lymphoma cell lines. Flow cytometry with PE-EGFR antibodies (anti-human EGFR antibody, Biolegend, # 352903, San Diego, USA) could not reveal a surface expression of the EGFR in the lymphoma cell lines SupT11, SMZ1, Hut78 and Jurkat, while HeLa cells, serving as EGFR-positive control cells, showed a strong signal. PE mouse IgG1, κ (Biolegend, # 4001139) was used as an isotypic control antibody. The figure shows data from three individual repetitions of the experiment.