



Article

mTOR knockdown in the infralimbic cortex evokes a depressive-like state in the mouse

Emilio Garro-Martínez ^{1,2,3,§}, M. Neus Fullana ^{1,4,5}, Eva Florensa-Zanuy ^{1,2,3}, Julia Senserrich ^{1,2,3}, Verónica Paz ^{1,4,5}, Esther Ruiz-Bronchal ^{1,4,5}, Albert Adell ^{1,2}, Elena Castro ^{1,2,3}, Álvaro Díaz ^{1,2,3}, Ángel Pazos ^{1,2,3}, Analía Bortolozzi ^{1,4,5}, Fuencisla Pilar-Cuellar ^{1,2,3,*}

Supplementary Materials:

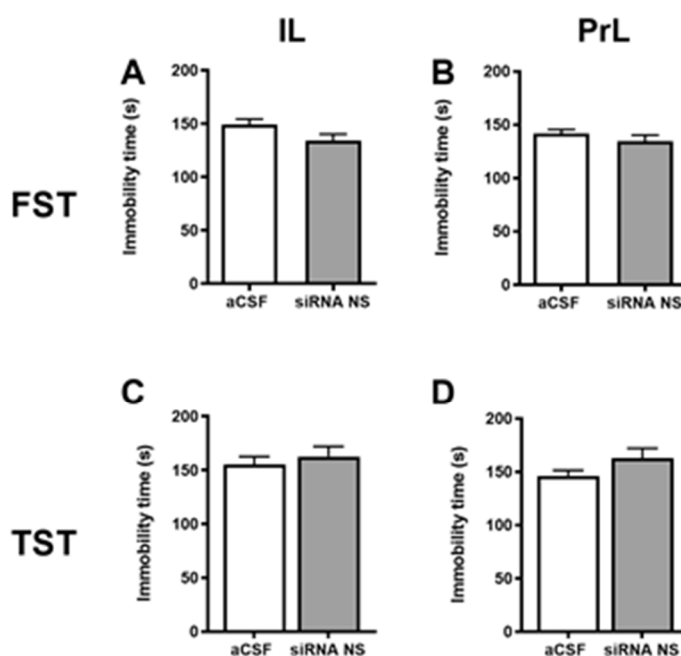


Figure S1. Effect of a single unilateral administration of non-sense siRNAs into the infralimbic and prelimbic cortices on depressive-like behavior. No changes were observed between animals infused in (A and C) the IL or (B and D) the PrL cortex in (A and B) the FST 24 h after acute unilateral infusion, or (C and D) the TST 48 h after infusion. Results are presented as mean±S.E.M. Student's t test. aCSF: artificial cerebrospinal fluid. n=4-6 animals per group.