

Supplementary Materials:

First Experimental Study Of The Influence Of Extracellular Vesicles Derived From Multipotent Stromal Cells On Osseointegration Of Dental Implants

Igor Maiborodin^{1,2,*}, Aleksandr Shevela^{1,3}, Vera Matveeva¹, Vitaly Morozov¹, Michael Toder³, Sergey Krasil'nikov¹, Alina Koryakina³, Andrew Shevela¹ and Oleg Yanushevich⁴

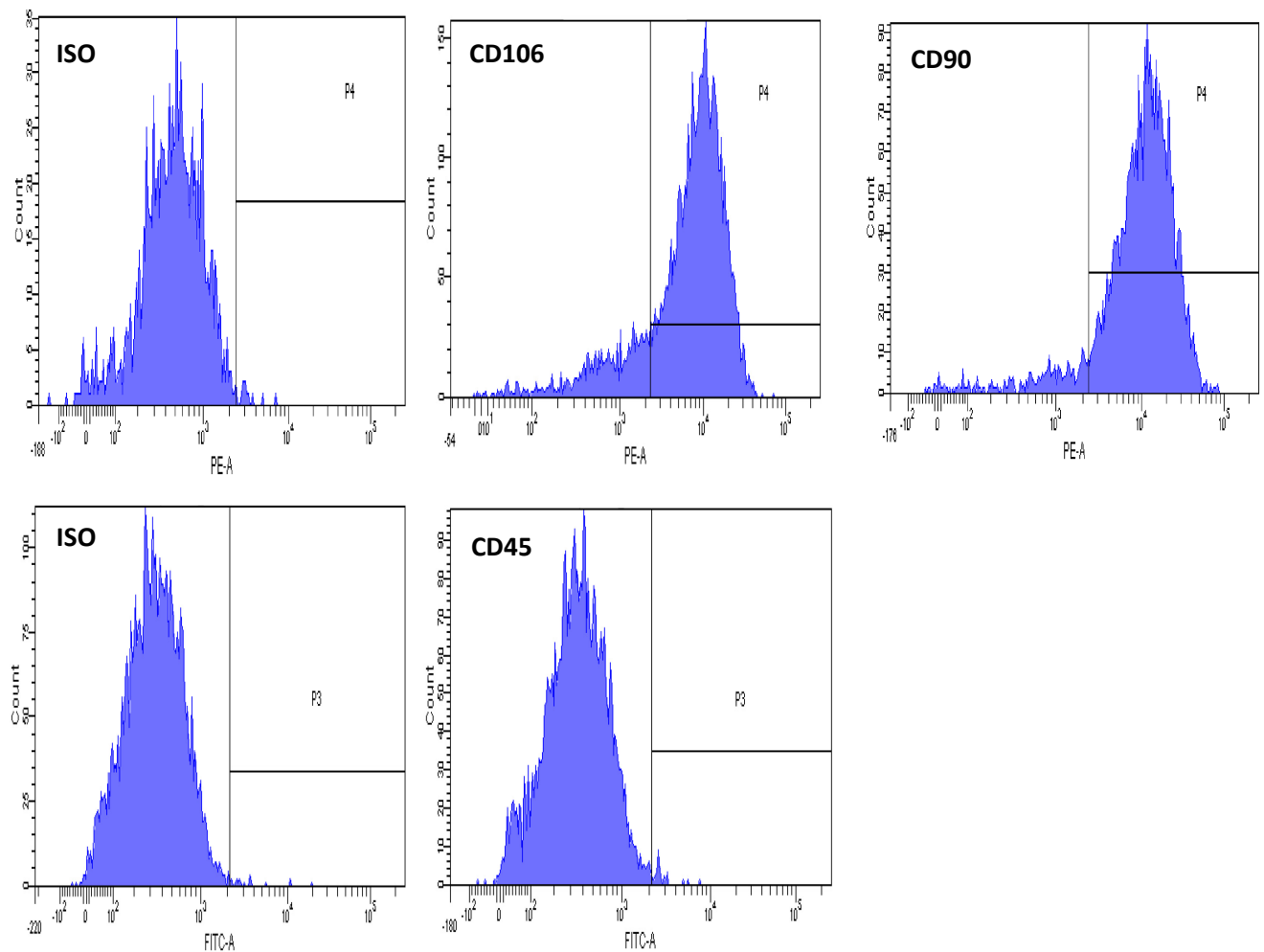


Figure S1. The phenotype of rat mesenchymal stem cells (MSCs) derived from the bone-marrow. Data indicate flow cytometry analysis. The MSC of rat were stained with specific antibodies or isotype controls. The samples were analyzed on a flow cytometer "FACSaria" III using FACSDiVa Version 6.1.3. software (Becton Dickinson).