

Table S1 Primers for qPCR and cloning.

Gene	Forward primer (5'→3')	Reverse primer (5'→3')	use
<i>Gapdh</i>	GCACAGTCAAGGCCGAGAAT	GCCTTCTCCATGGTGGTGAA	qPCR
<i>Nras</i>	GAGAGGCCTGCTGAAAATGAC	GTACACCTTGTCCTTGACTTC	qPCR
<i>Kras</i>	AGGAGCTCCTGGATTGGCA	CAGCACACATTTGCAGCTC	qPCR
<i>Hras</i>	GGGGTCTCCAACAGCTTCTC	AGGTCTCCTCCAGGGATGTC	qPCR
<i>Fth</i>	AAGATGGGTGCCCCTGAAG	CCAGGGTGTGCTTGTCAAAGA	qPCR
<i>Ftl</i>	CGGGCCTCCTACACCTACCT	CCCTCCAGAGCCACGTCAT	qPCR
<i>Slc7a11</i>	TGGCGGTGACCTTCTCTGA	ACAAAGATCGGGACTGCTAATGA	qPCR
<i>Slc39a14</i>	TTCCCAGCCCAAGGAAG	CAAAGAGGTCTCCAGAGCTAAA	qPCR
<i>Tfr1</i>	TGGCTGAAACGGAGGAGACAGA	TGGCTCAGCTGCTTGATGGTGT	qPCR
<i>GPx4</i>	ACGCAGCCGTTCTTATCAATGAGAA	ACGCAGCCGTTCTTATCAATGAGAA	qPCR
<i>Fsp1</i>	GCGACCTTCAAGGACAACCTCC	GCCAGGATAAGATGTGAGAAGGG	qPCR
<i>Fth</i>	GATGACGATGACAAAGCCACCATGACC ACCGCGTCT	GTGATGGATATCTGCAGCTCTCATCACCG TGT	cloning
sh <i>Nras</i> #1	TCCCACCATAGAGGATTCTTA	-	shRNA
sh <i>Nras</i> #2	CCGAAAGCAAGTGGTGATTGA	-	shRNA

Fig. S1

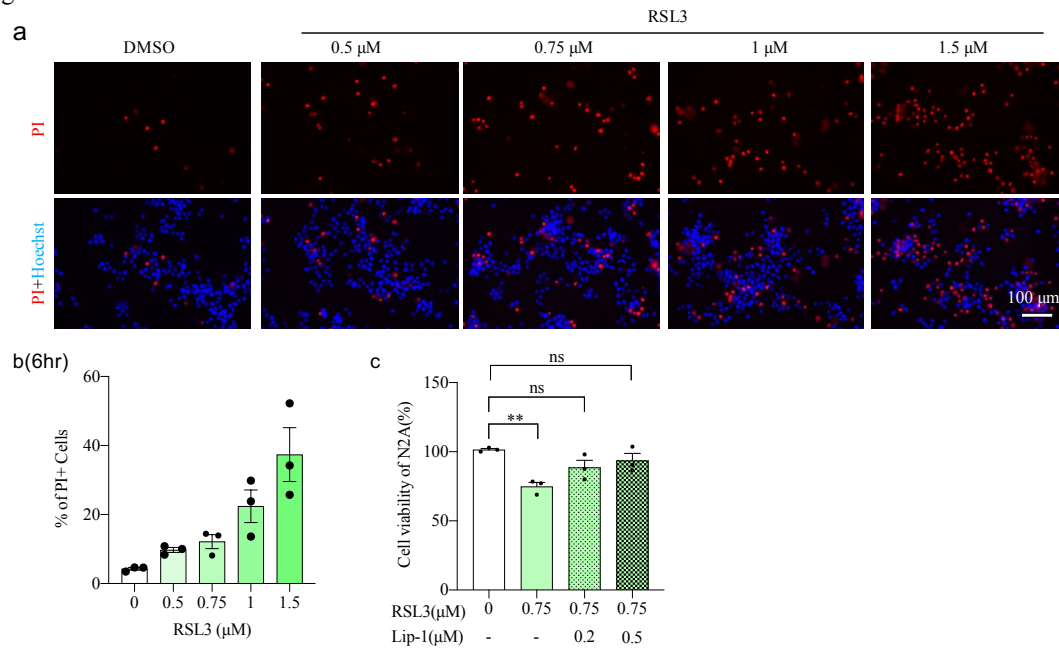


Figure S1. Cell death and viability of N2A cells with different dose of RSL3 and liproxstatin-1.

- Representative images of PI/Hoechst staining with 8 hrs treatment of indicated drugs.
- Ratios of dead cells (PI positive cells) treated by RSL3 for 8 hrs.
- N2A cells were treated with DMSO, 0.75 μ M RSL3 or combination of 0.2, 0.5 μ M liproxstatin-1 for 24 hrs and cell viability was analyzed by CCK-8 assay at 24 hrs.

Fig. S2

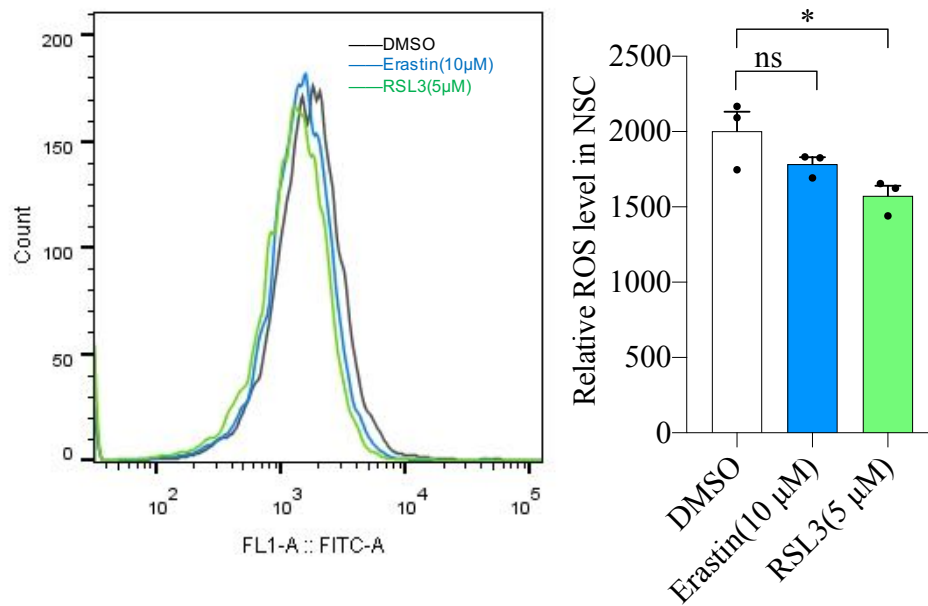


Figure S2. Lipid ROS level in neuronal stem cells.

The cells were treated with indicated drugs for 4 hrs and lipid ROS was detected by FACS. Data were obtained from three independent experiments. *: $p < 0.05$; ns=no significance.

Fig. S3

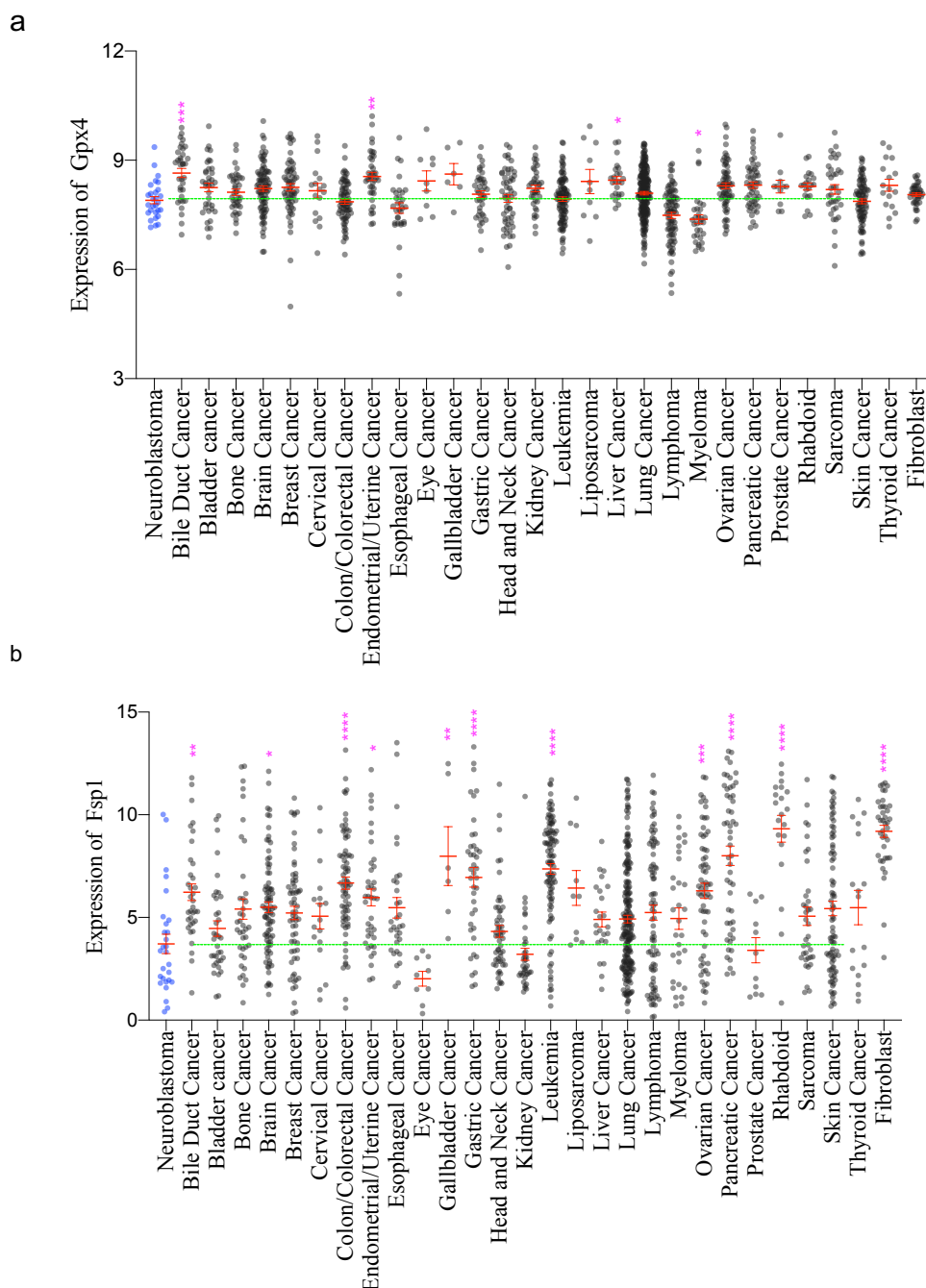


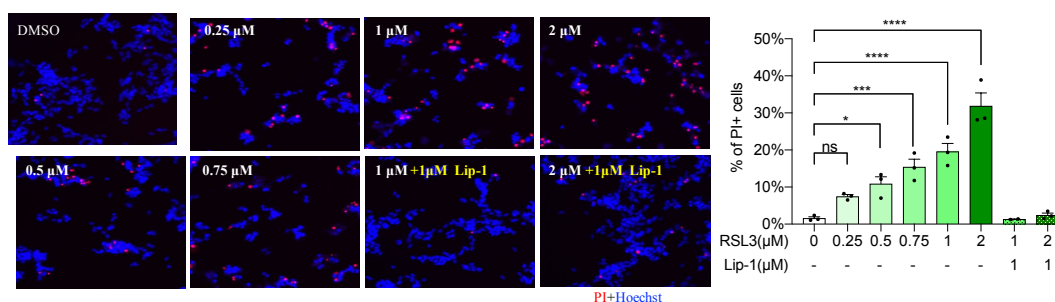
Figure S3 Analysis of relative expression of GPX4 and FSP1 in cancers

a. Relative expression of GPX4 in neuroblastoma and other 28 cancers. *: $p < 0.05$; **: $p < 0.01$; ***: $p < 0.001$.

b. Relative expression of FSP1 in neuroblastoma and other 28 cancers. *: $p < 0.05$; **: $p < 0.01$; ***: $p < 0.001$; ****: $p < 0.0001$.

Fig. S4

a



b

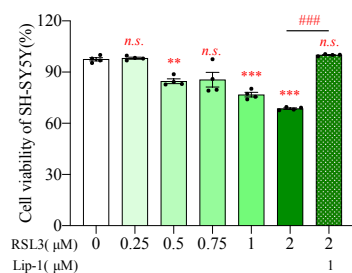


Figure S4. SH-SY5Y cell showed sensitivity to ferroptosis inducer.

a. Representative images of PI/Hoechst staining with 12 hrs treatment of indicated drugs. Ratios of PI positive cells were quantified and showed on the right. *: p<0.05; ***: p<0.001; ****: p<0.0001; n.s.=no significance.

b. Viability of SH-SY5Y cells treated by RSL3 for 6 hrs. **: p<0.01; ***: p<0.001; ###: p<0.001; n.s.=no significance.