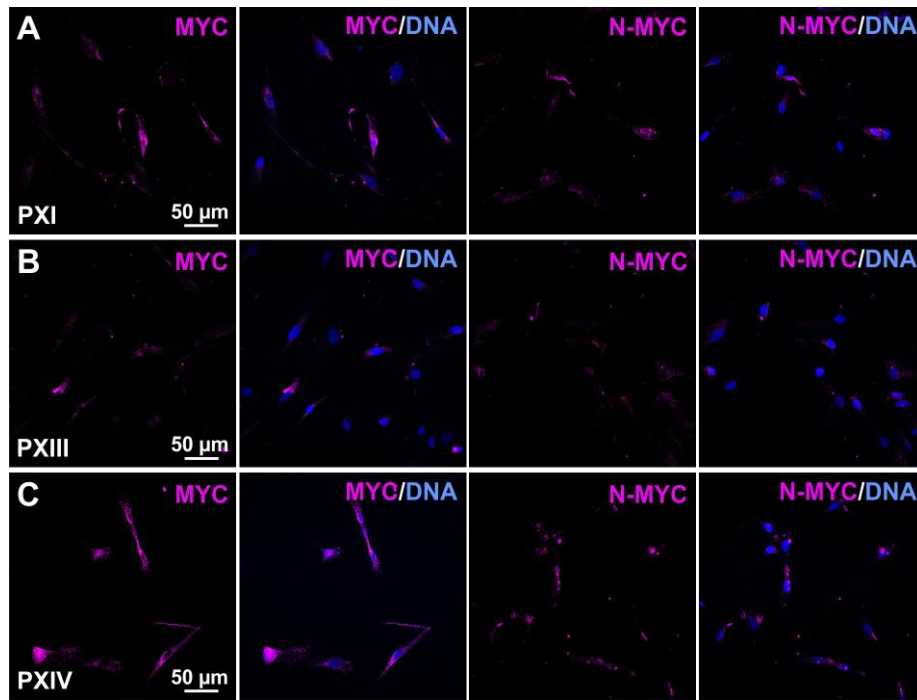
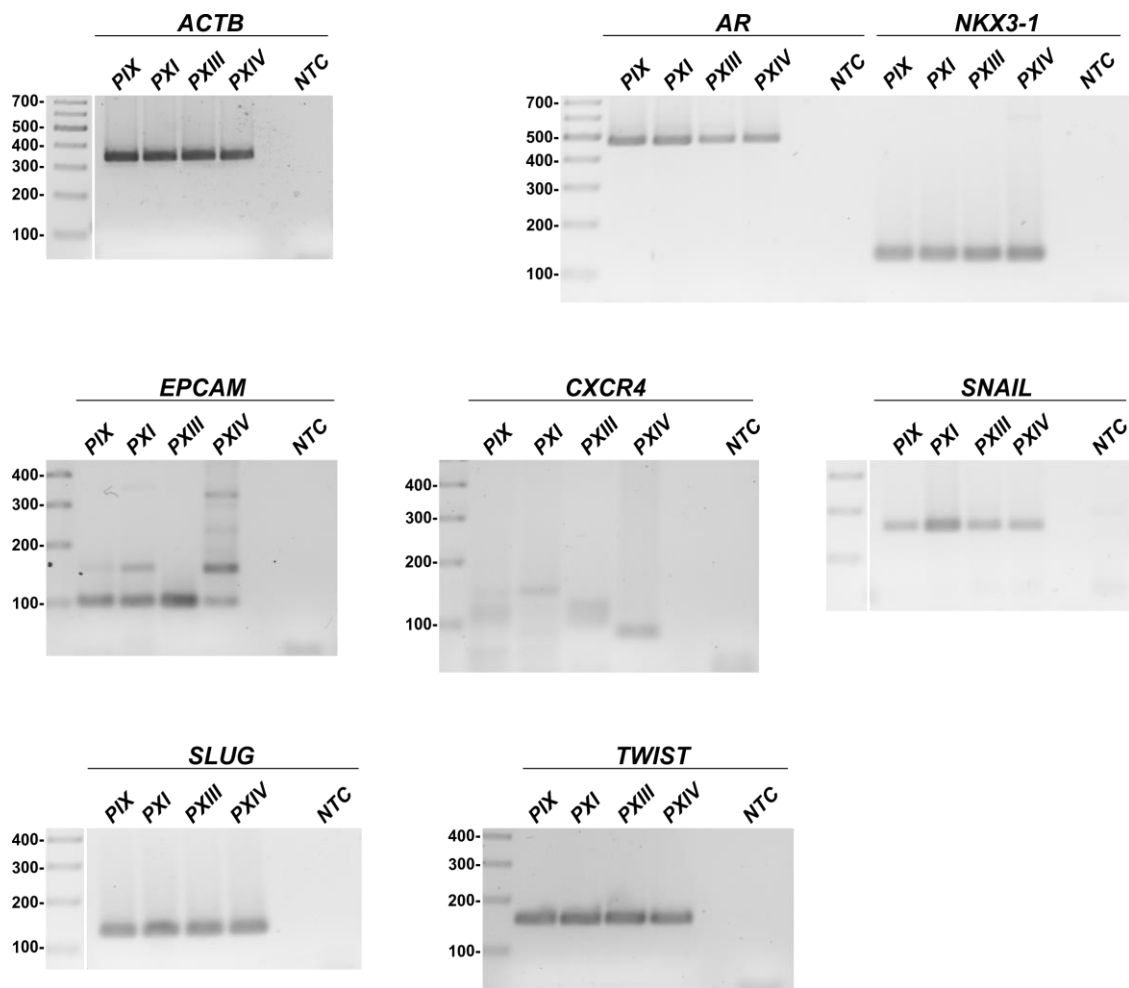


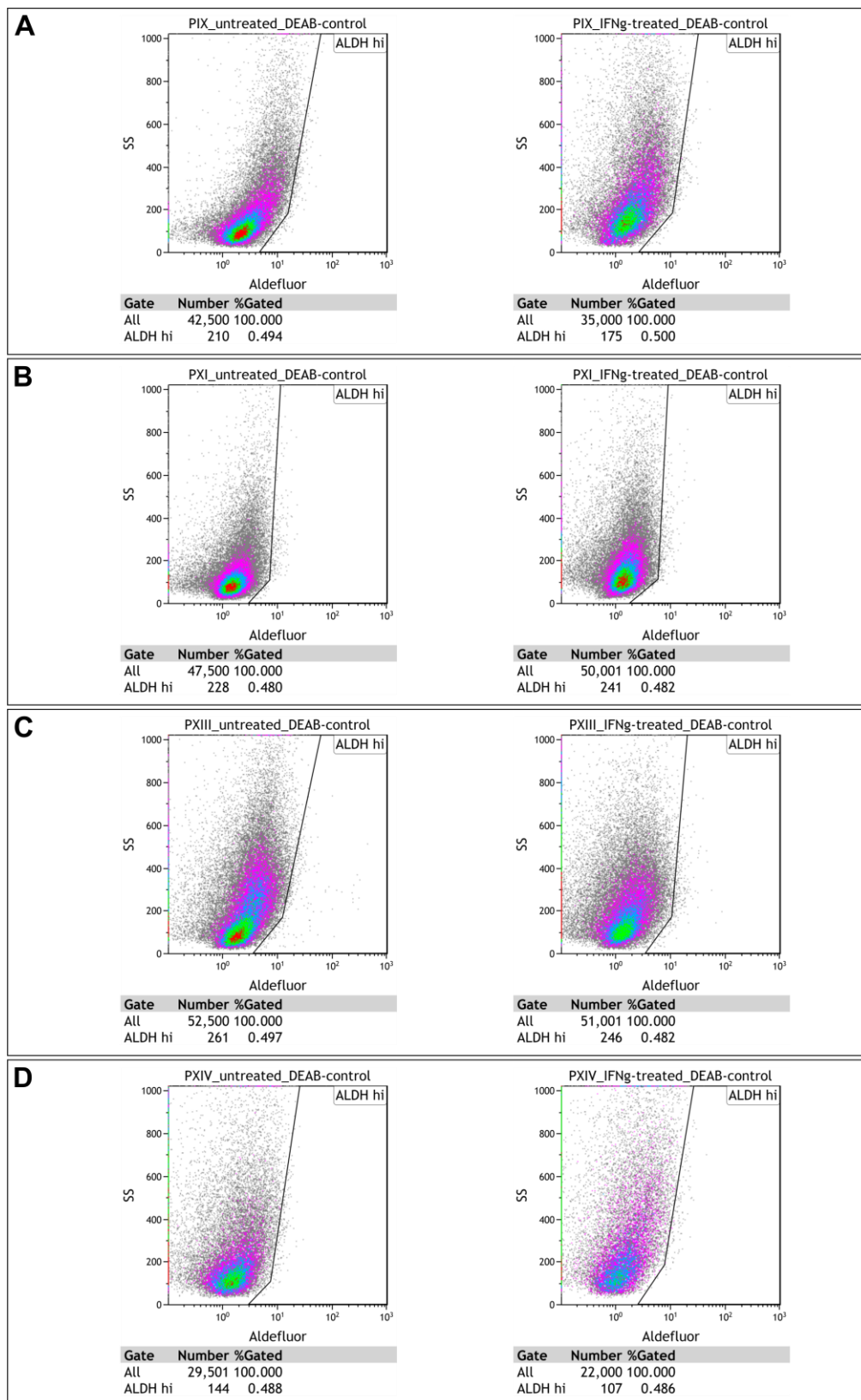
**Figure S1:** Potential sphere formation as well as CD44/CD133 and Nestin immunostainings of cultured PIX, PXIII and PXIV PCSC populations.



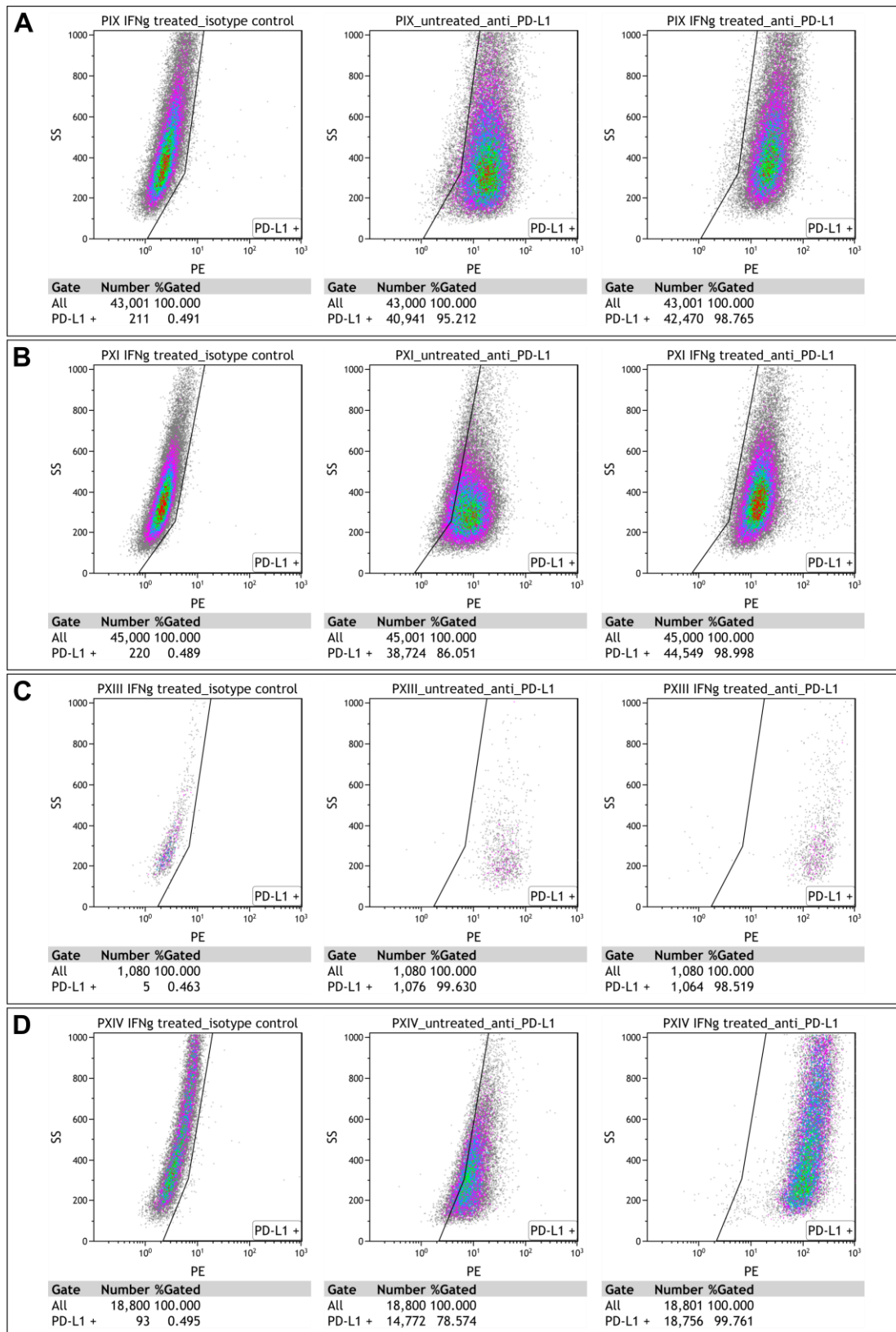
**Figure S2:** MYC and N-MYC immunocytochemistry of PXI, PXIII and PXIV PCSC populations.



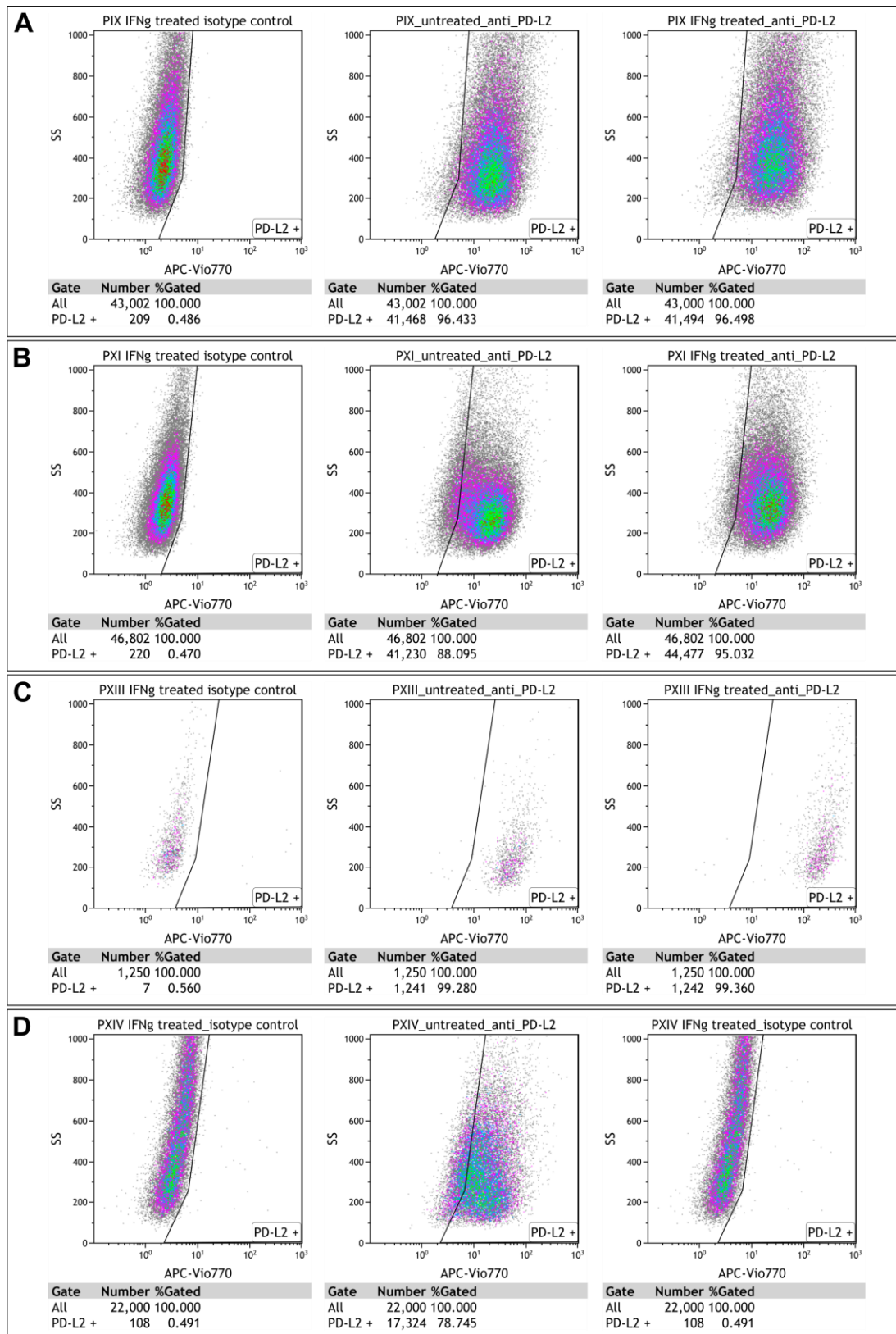
**Figure S3:** Full size RT-PCR images of analyzed target gene expressions in PCSC populations.



**Figure S4:** DEAB controls of flow cytometric-analyzed ALDH expressions.



**Figure S5:** Dot plots including gating strategies of flow cytometric-analyzed PD-L1 expressions.

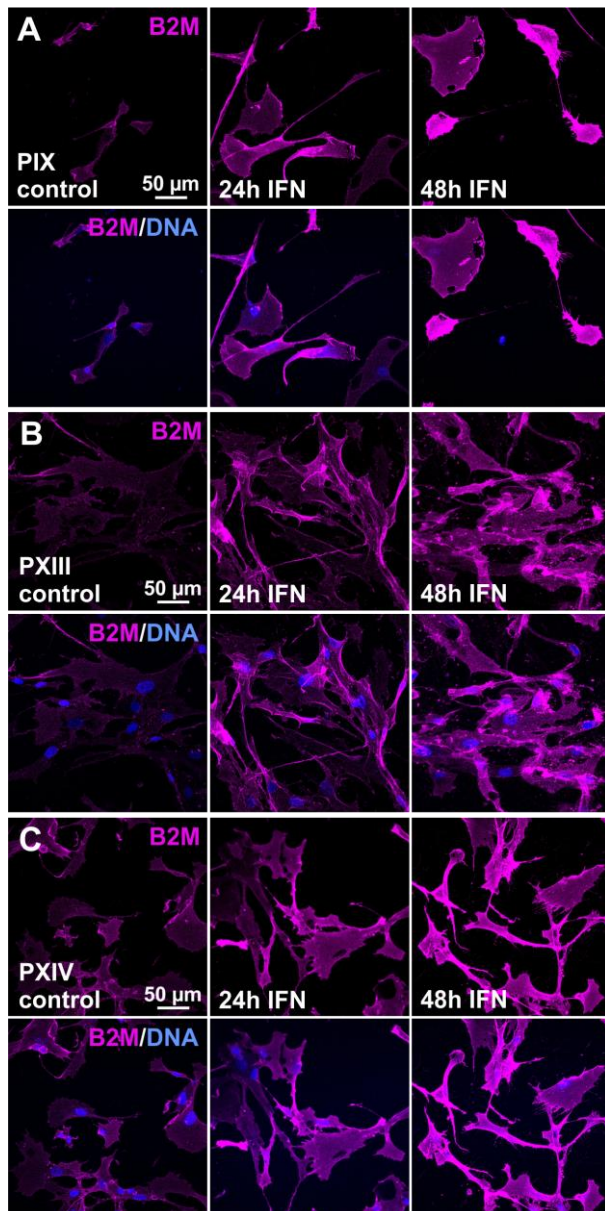


**Figure S6:** Dot plots including gating strategies of flow cytometric-analyzed PD-L2 expressions.

**Table S1:** Mean fluorescence intensities of PD-L1 and –L2 after flow cytometric analysis.

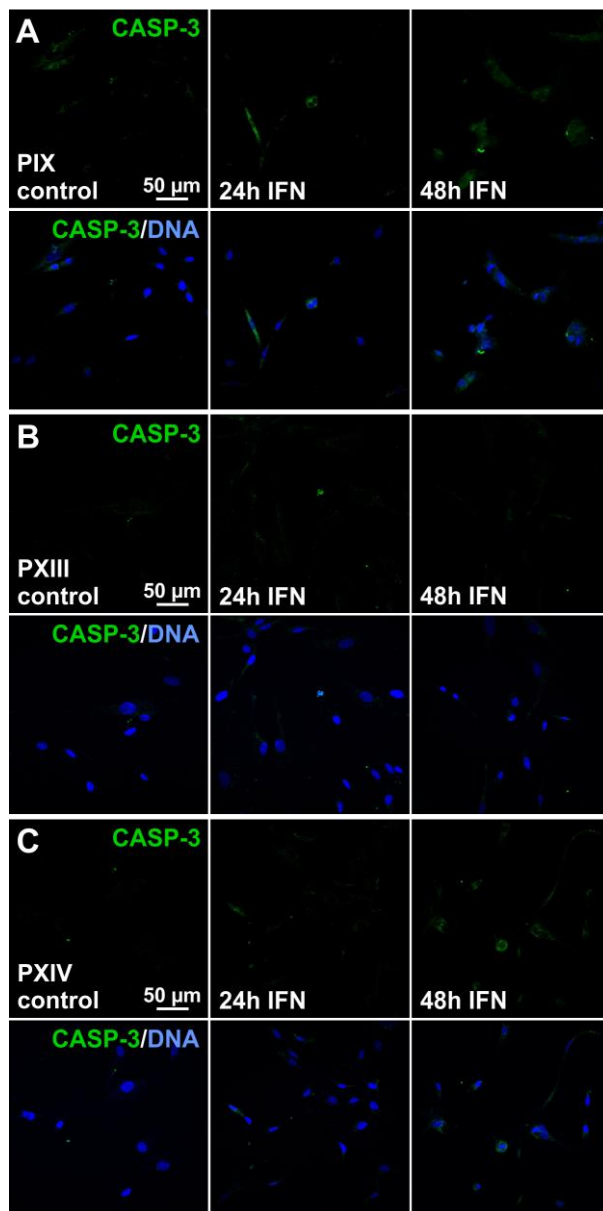
Sample ID	Condition	Mean fluorescence intensity	
		(MFI) PD-L1	MFI PD-L2
PIX	control	21,649	29,275
	IFN $\gamma$ pre-treated	28,364	35,591
PXI	control	10,172	20,110
	IFN $\gamma$ pre-treated	18,206	24,397
PXIII	control	44,854	62,699
	IFN $\gamma$ pre-treated	223,453	249,716
PXIV	control	11,384	20,841
	IFN $\gamma$ pre-treated	153,728	104,884



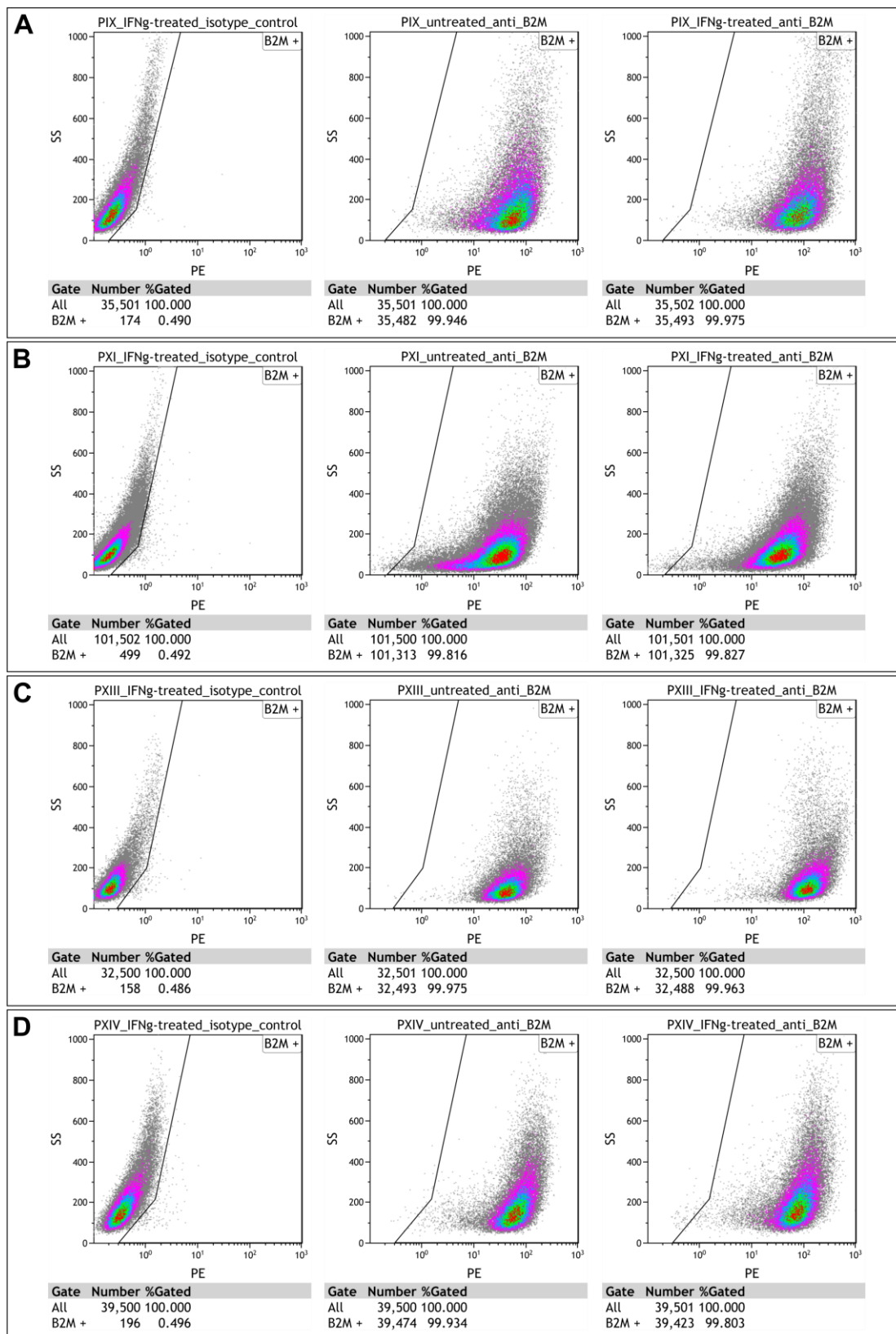


**Figure S7:** Exemplary B2M immunostainings of IFN $\gamma$ -treated PIX, PXIII and PXIV PCSC populations.

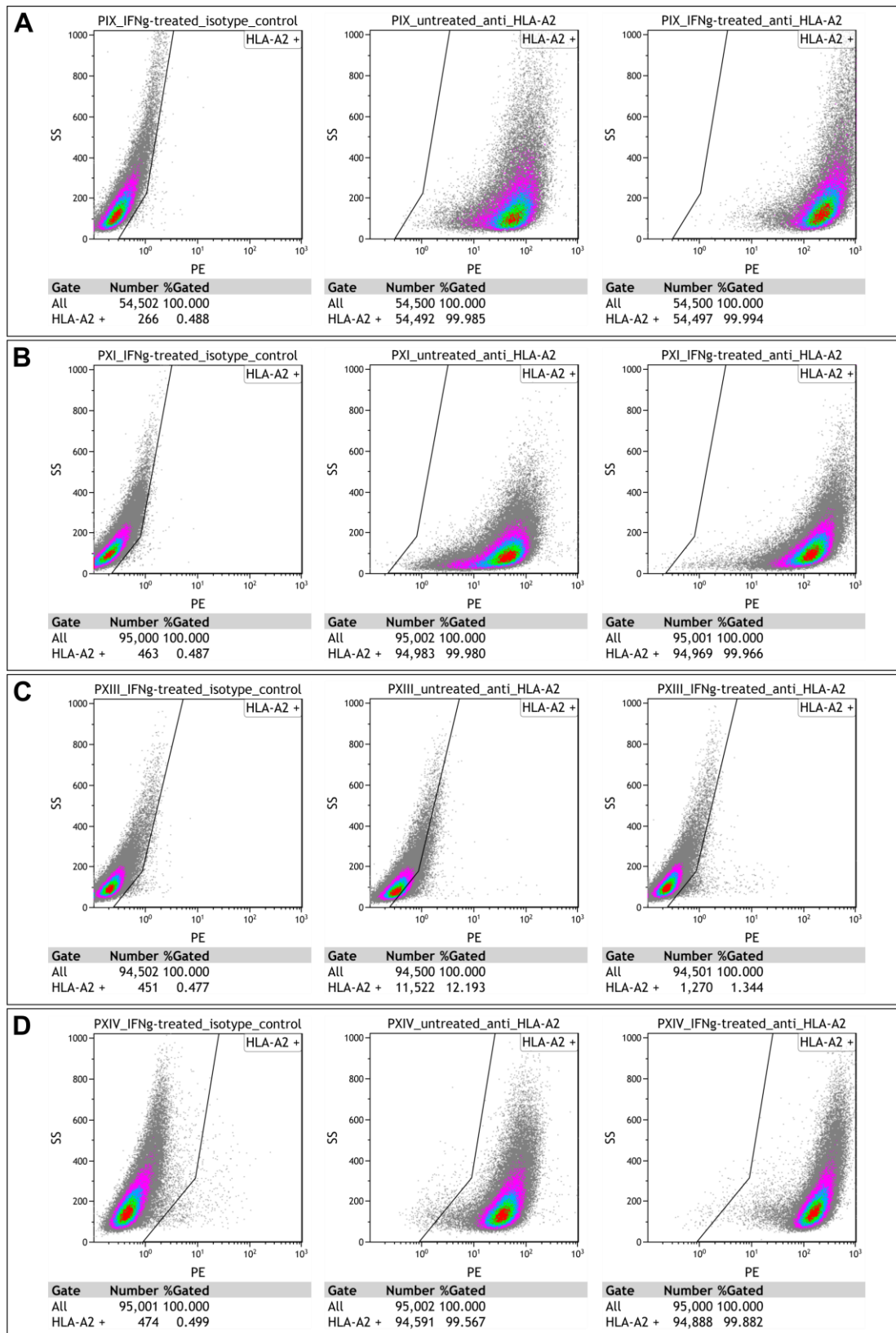




**Figure S8:** Exemplary CASP-3 immunostainings of IFN $\gamma$ -treated PIX, PXIII and PXIV PCSC populations.



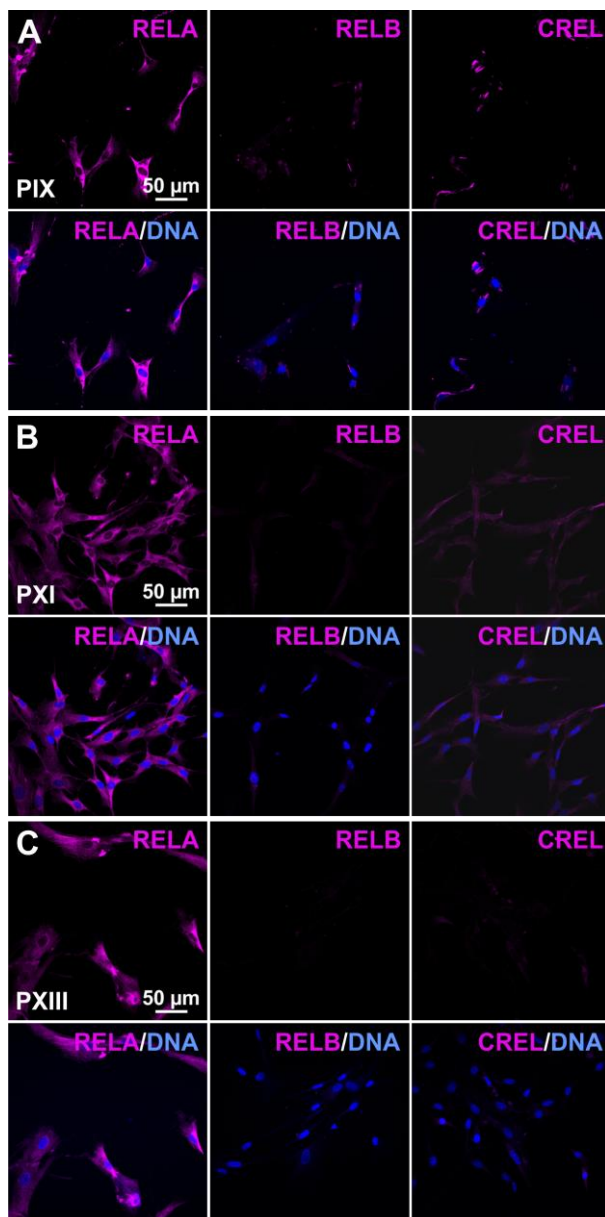
**Figure S9:** Dot plots including gating strategies of flow cytometric-analyzed B2M expressions.



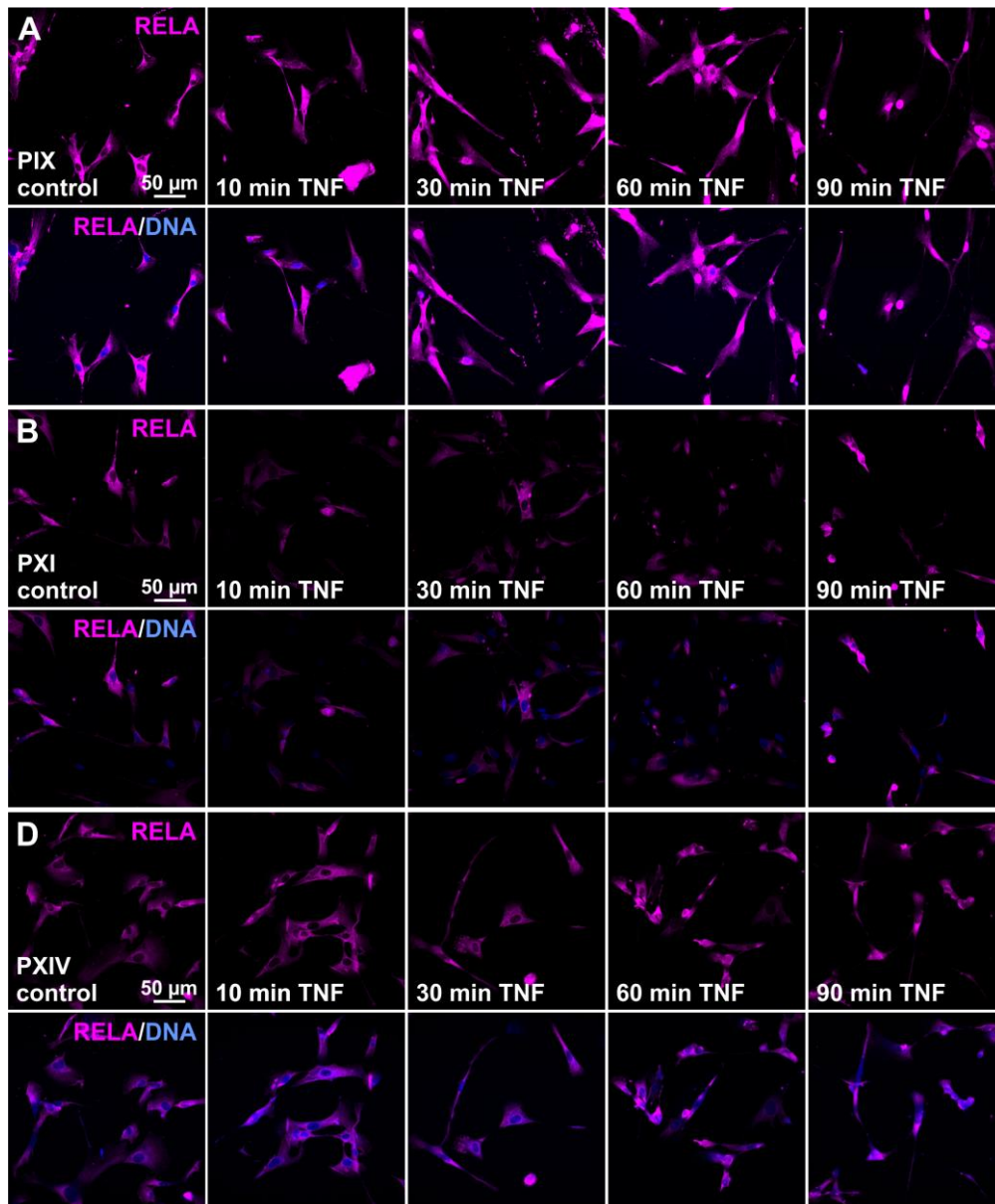
**Figure S10:** Dot plots including gating strategies of flow cytometric-analyzed HLA-A2 expressions.

**Table S2:** Mean fluorescence intensities of B2M and HLA-A2 after flow cytometric analysis.

Sample ID	Condition	Mean fluorescence intensity (MFI) B2M	MFI HLA-A2
PIX	control	67,444	70,235
	IFN $\gamma$ pre-treated	108,696	296,777
PXI	control	37,822	46,91
	IFN $\gamma$ pre-treated	50,267	174,073
PXIII	control	54,421	0,451
	IFN $\gamma$ pre-treated	146,833	0,336
PXIV	control	77,459	46,265
	IFN $\gamma$ pre-treated	93,594	202,444



**Figure S11:** Immunocytochemistry of NF- $\kappa$ B subunit expressions in primary PIX, PXI and PXIII PCSCs.



**Figure S12:** Exemplary RELA immunostainings of TNF $\alpha$ -treated PIX, PXI and PXIV PCSC populations.