

Injectable thixotropic β -cyclodextrin-functionalized hydrogels based on guanosine quartet assembly

*Monica-Cornelia Sardaru¹, Irina Rosca¹, Simona Morariu², Elena-Laura Ursu¹, Razvan Ghiarasim¹ and Alexandru Rotaru^{*1}*

¹“Petru Poni” Institute of Macromolecular Chemistry, Romanian Academy, Centre of Advanced Research in Bionanoconjugates and Biopolymers, Grigore Ghica Voda Alley 41 A, 700487 Iasi, Romania.

²“Petru Poni” Institute of Macromolecular Chemistry, Romanian Academy, Natural Polymers, Bioactive and Biocompatible Materials, Grigore Ghica Voda Alley 41 A, 700487 Iasi, Romania.

* Correspondence: rotaru.alexandru@icmpp.ro

Content

- | | |
|---------------------------|-------------------------------|
| 1. CD spectra | – Figure S1-S7 |
| 2. SEM images | – Figures S8-S14 |
| 3. AFM images | – Figures S15 –S19 |
| 4. Antimicrobial activity | – Figure S20, Table S1 |

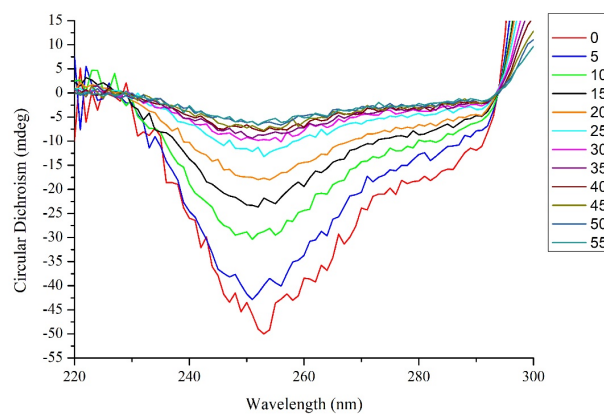
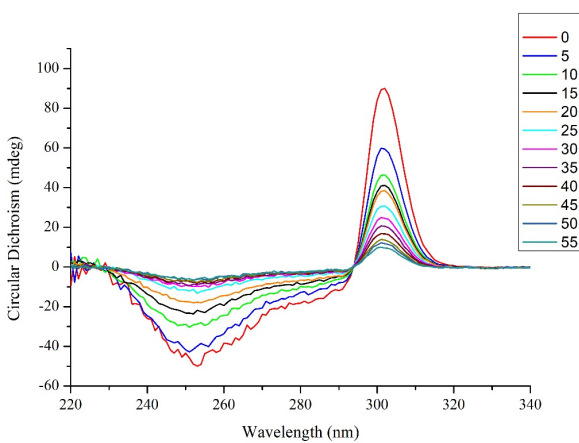


Figure S1. CD spectra of G4-CD_1 in the 220-340 nm range (left) and 220-300 nm range (right) recorded every five minutes from 60 °C to 25 °C.

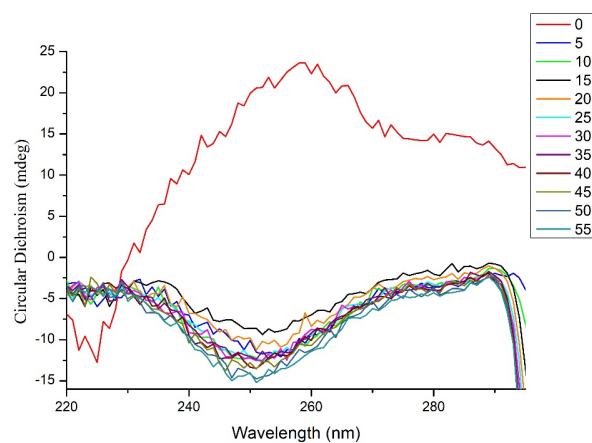
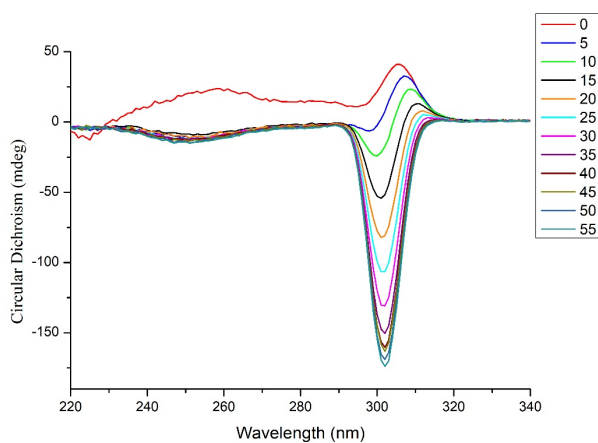


Figure S2. CD spectra of G4-CD_2 in the 220-340 nm range (left) and 220-300 nm range (right) recorded every five minutes from 60 °C to 25 °C.

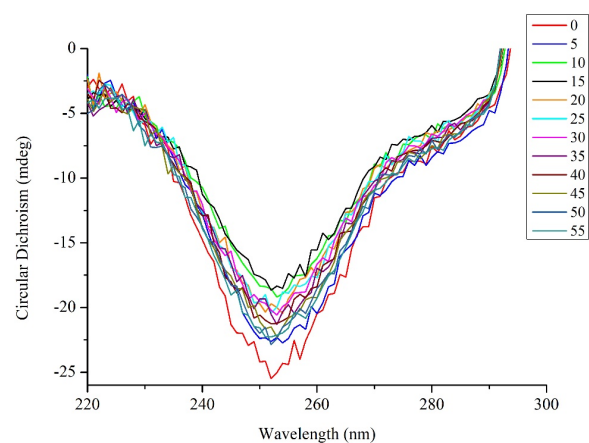
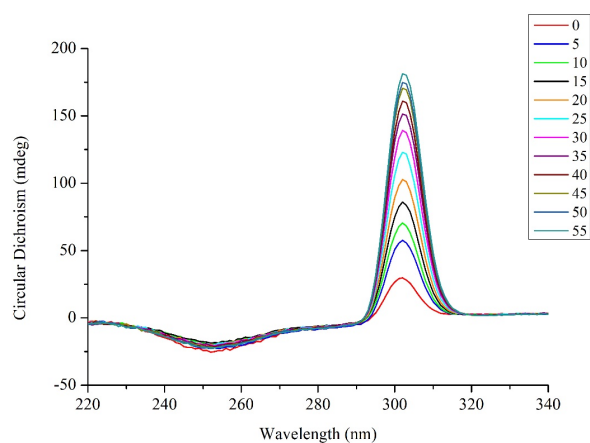


Figure S3. CD spectra of G4-CD_3 in the 220-340 nm range (left) and 220-300 nm range (right) recorded every five minutes from 60 °C to 25 °C.

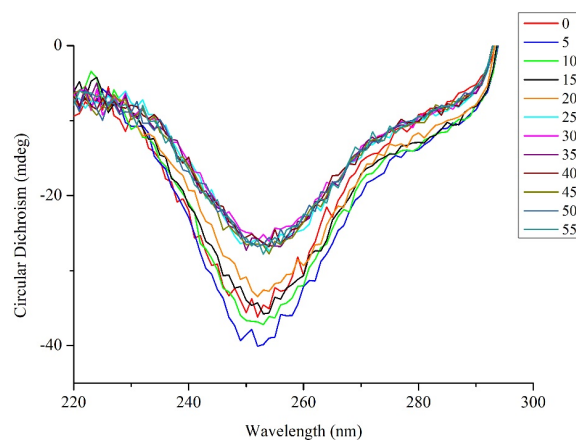
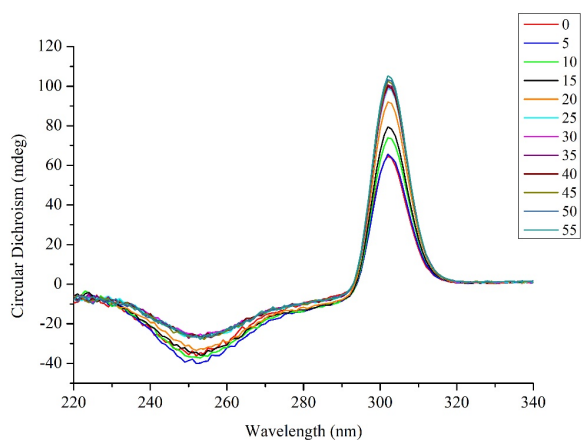


Figure S4. CD spectra of G4-CD_4 in the 220-340 nm range (left) and 220-300 nm range (right) recorded every five minutes from 60 °C to 25 °C.

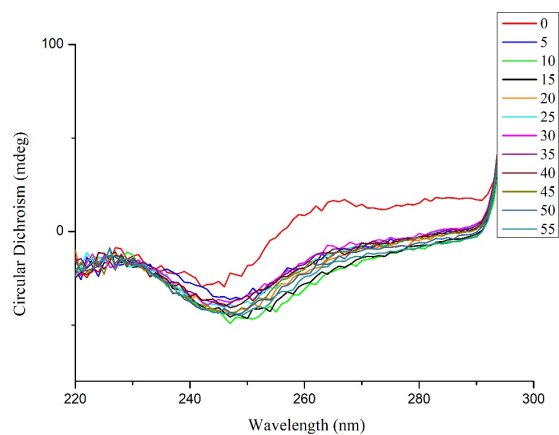
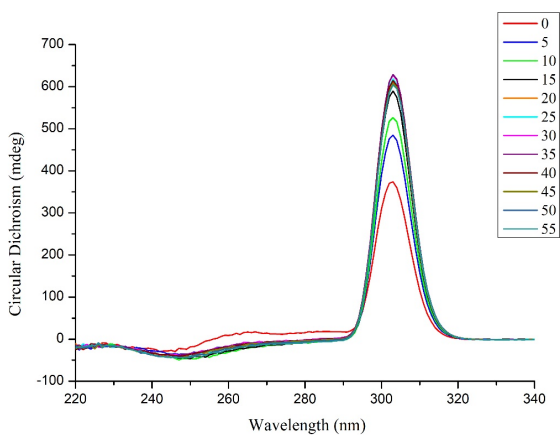


Figure S5. CD spectra of G4-CD_5 in the 220-340 nm range (left) and 220-300 nm range (right) recorded every five minutes from 60 °C to 25 °C.

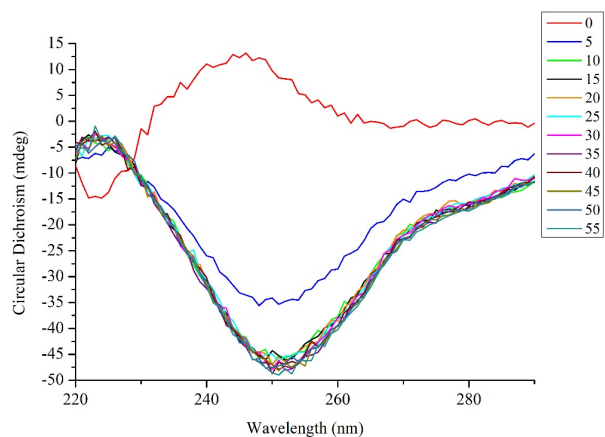
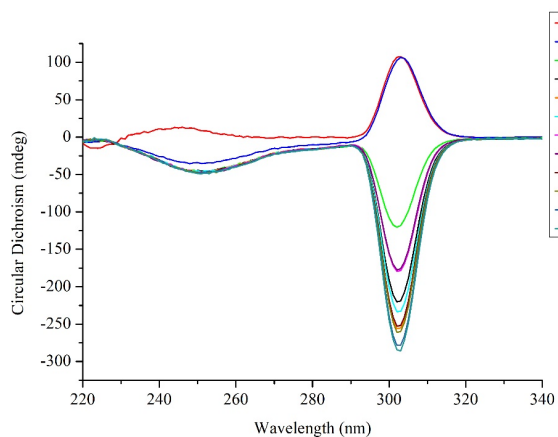


Figure S6. CD spectra of G4-CD_6 in the 220-340 nm range (left) and 220-300 nm range (right) recorded every five minutes from 60 °C to 25 °C.

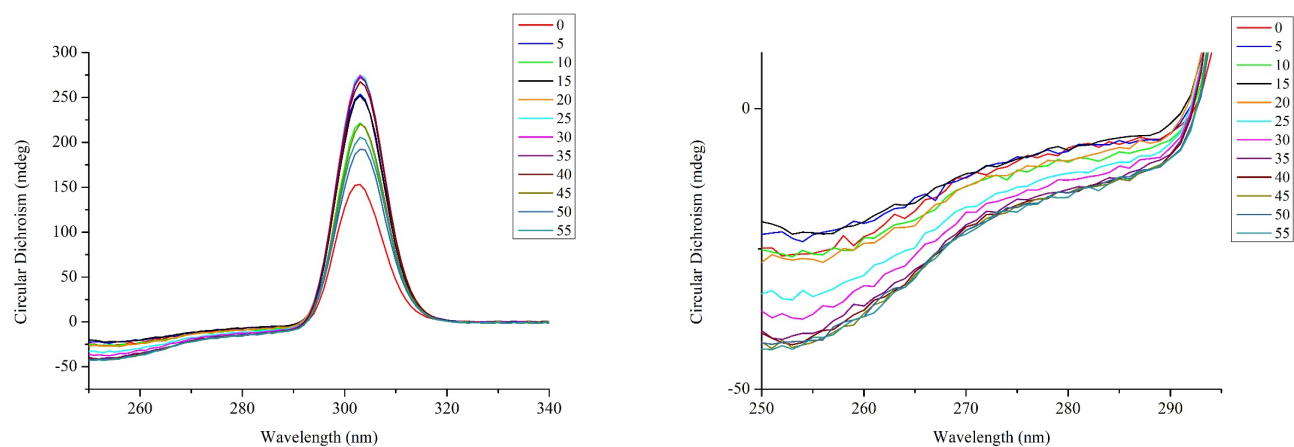


Figure S7. CD spectra of G4-CD_7 in the 220-340 nm range (left) and 220-300 nm range (right) recorded every five minutes from 60 °C to 25 °C.

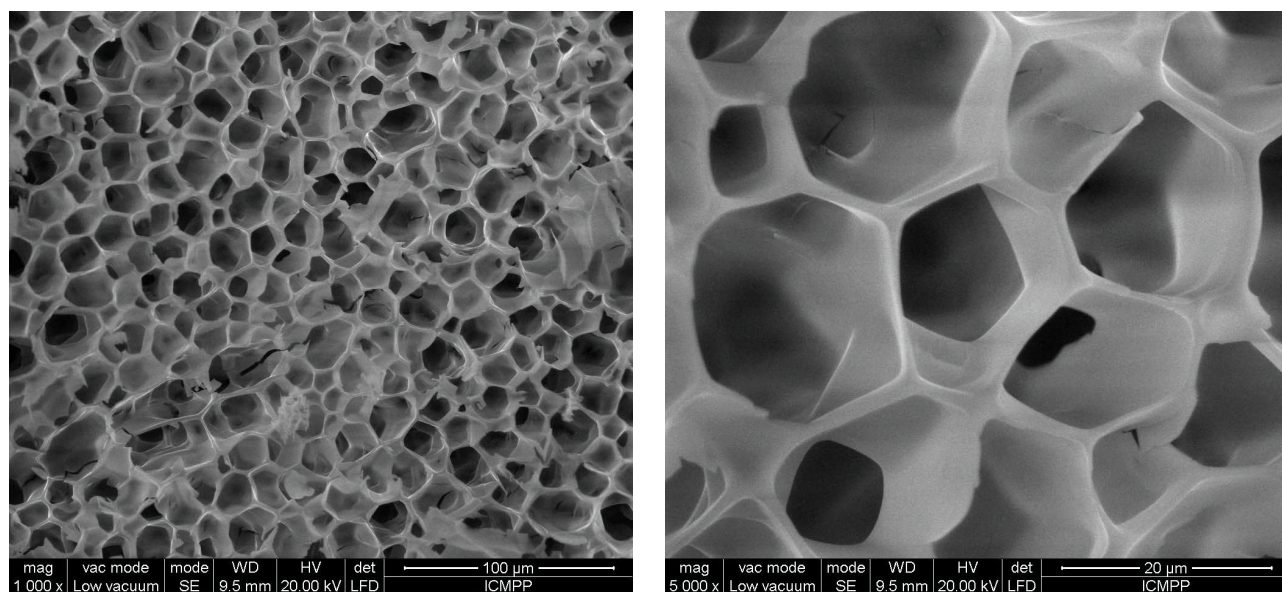


Figure S8. SEM images of G4-CD_1 at different magnifications. Scale bar – 100 µm (left) and 20 µm (right).

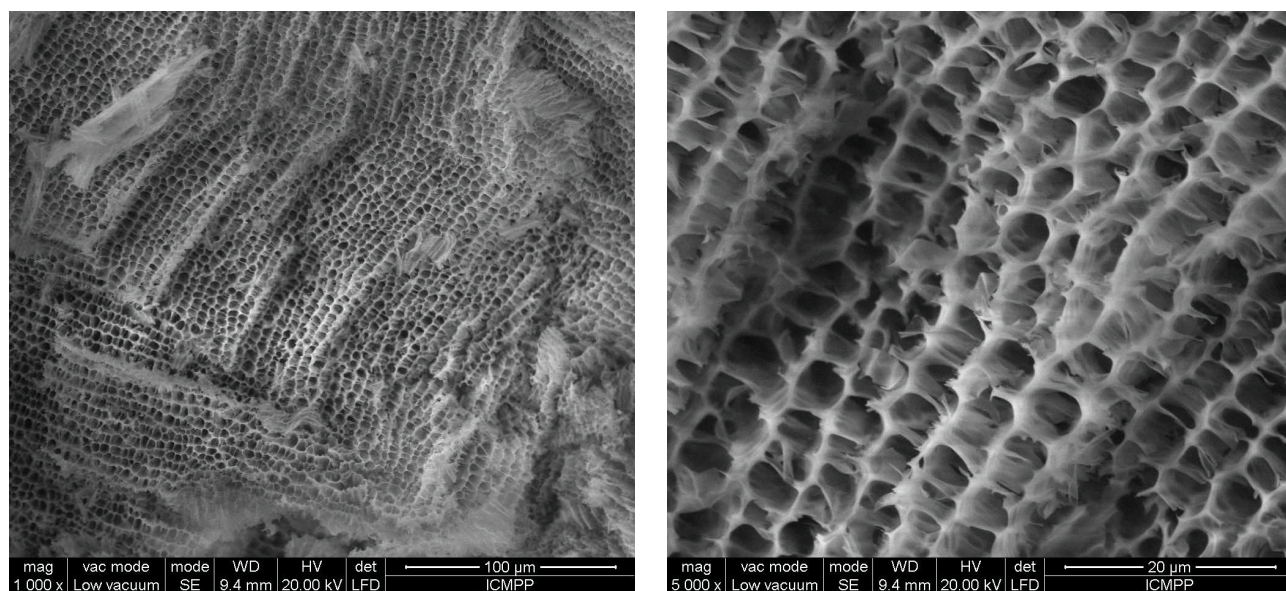


Figure S9. SEM images of G4-CD₂ at different magnifications. Scale bar – 100 μm (left) and 20 μm (right).

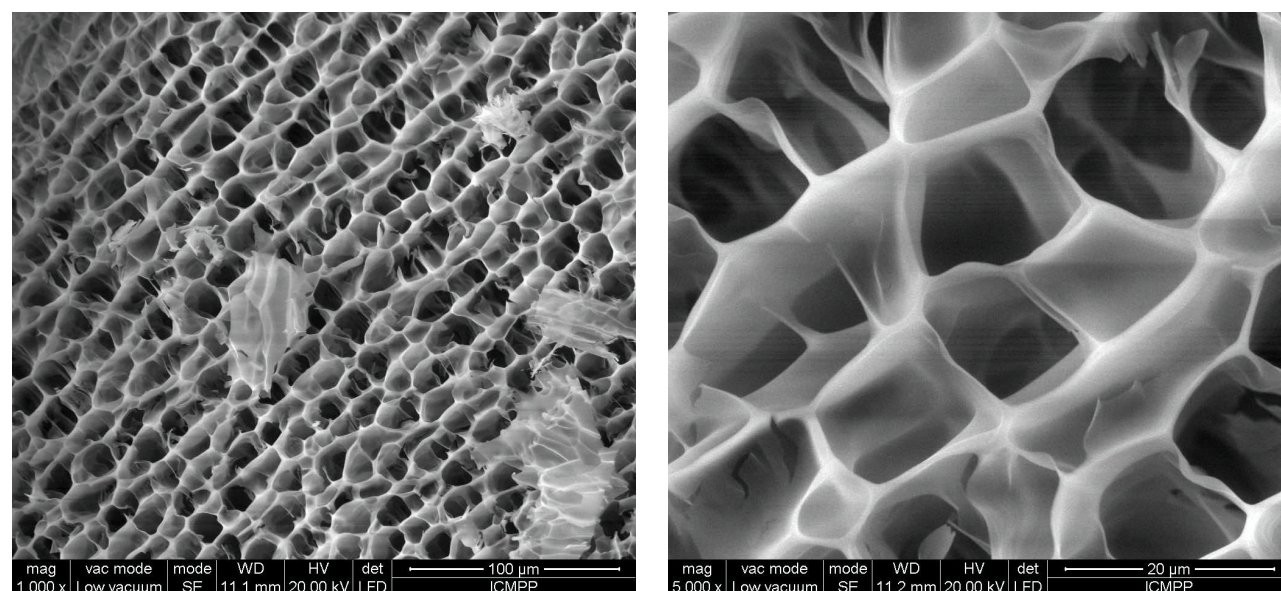


Figure S10. SEM images of G4-CD₃ at different magnifications. Scale bar – 100 μm (left) and 20 μm (right).

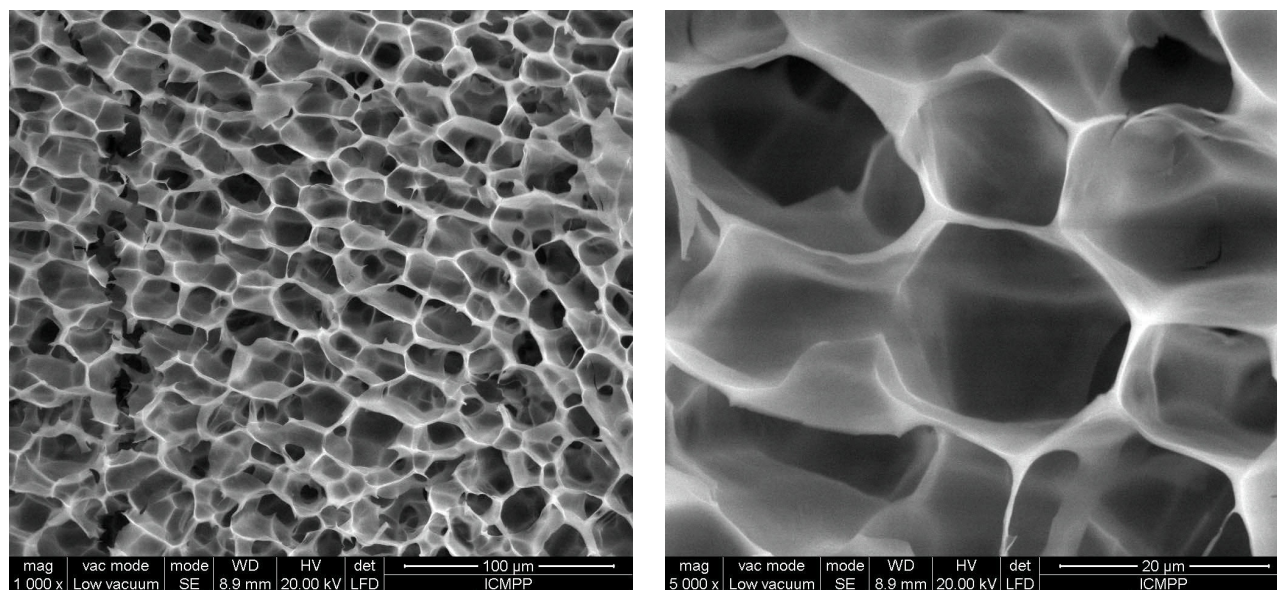


Figure S11. SEM images of G4-CD_4 at different magnifications. Scale bar – 100 μm (left) and 20 μm (right).

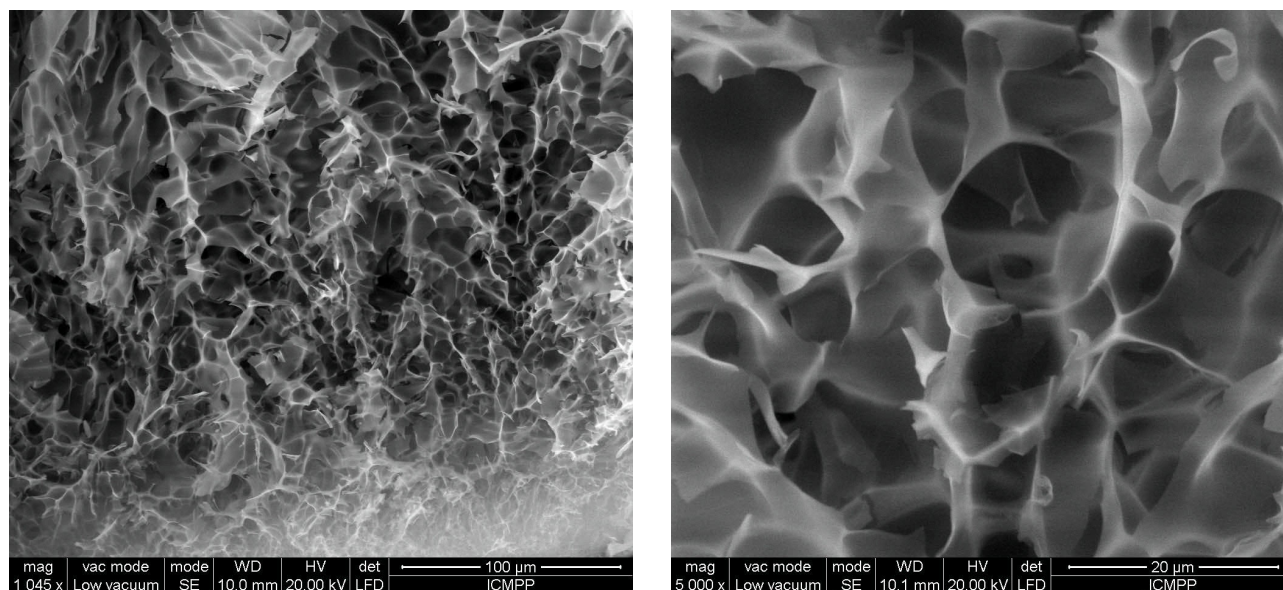


Figure S12. SEM images of G4-CD_5 at different magnifications. Scale bar – 100 μm (left) and 20 μm (right).

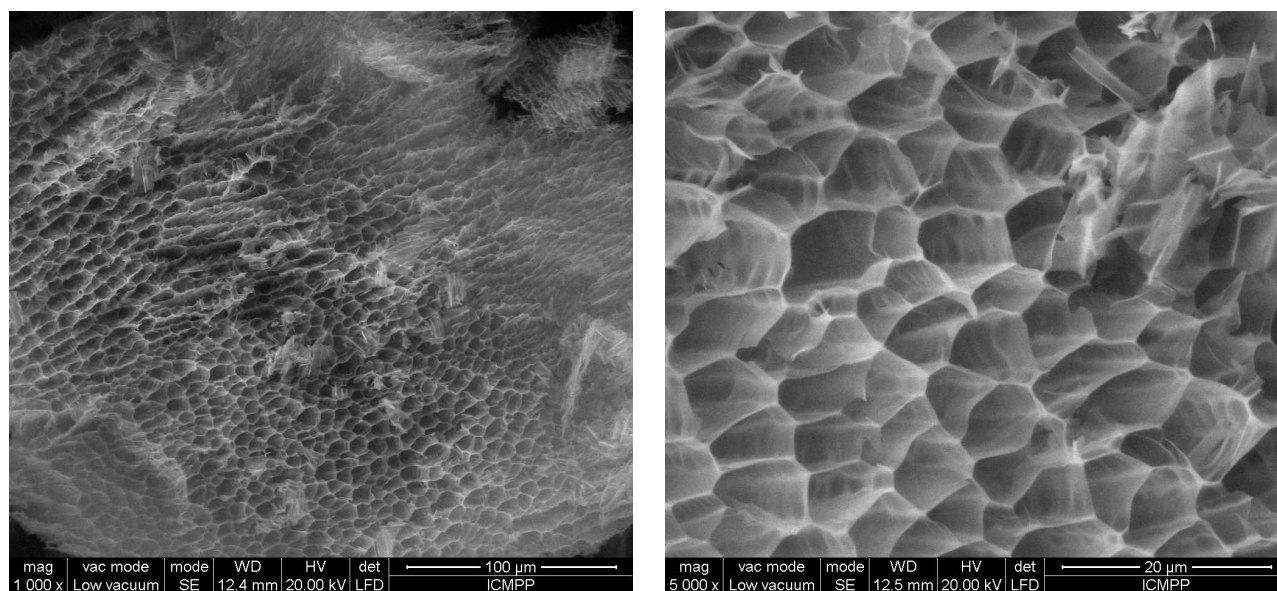


Figure S13. SEM images of G4-CD₆ at different magnifications. Scale bar – 100 μm (left) and 20 μm (right).

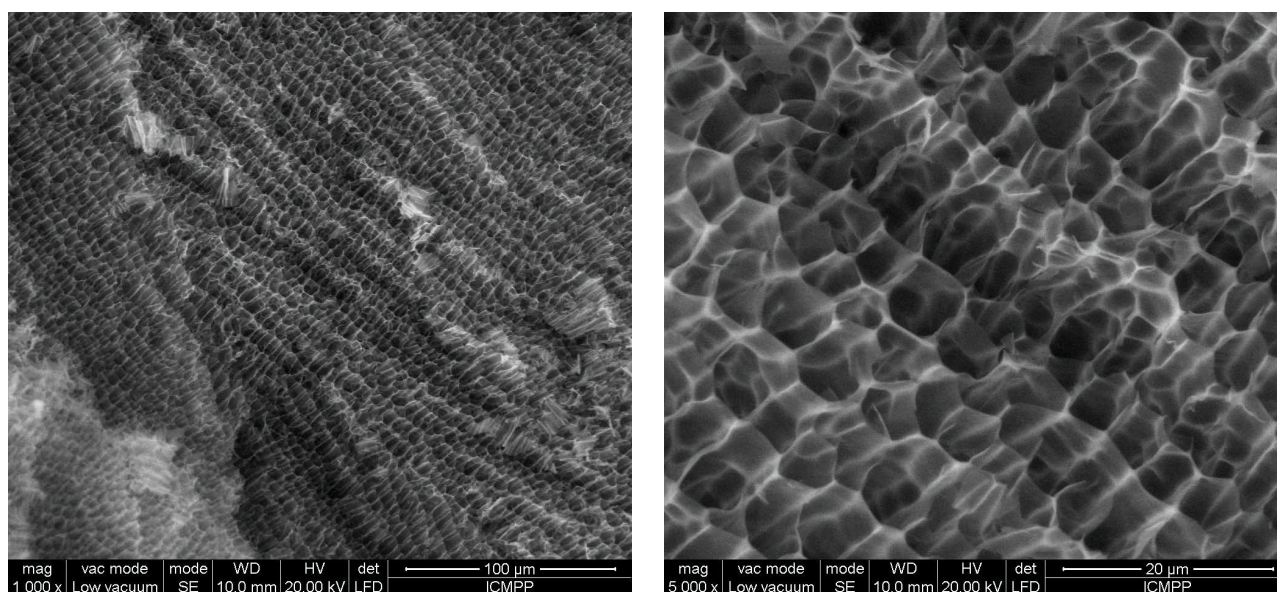


Figure S14. SEM images of G4-CD₇ at different magnifications. Scale bar – 100 μm (left) and 20 μm (right).

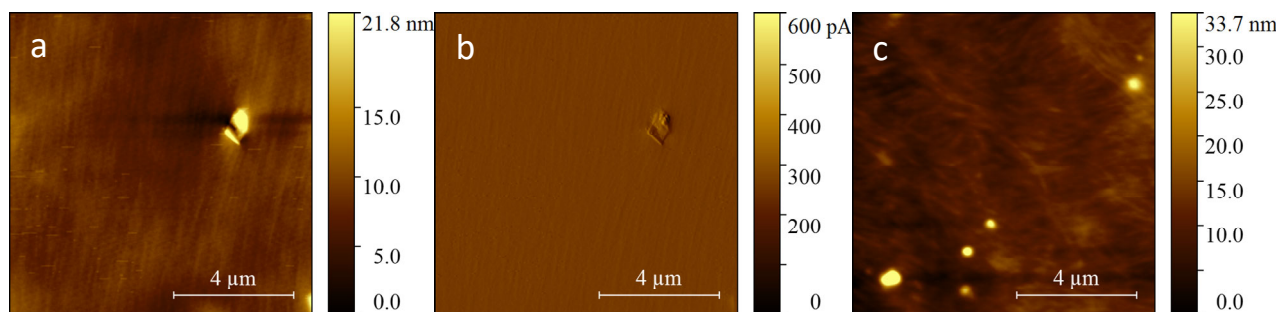


Figure S15. AFM (a) and error signal images (b) of G4-CD_1; (c) AFM images of G4-CD_2: scale bar – 4 μm .

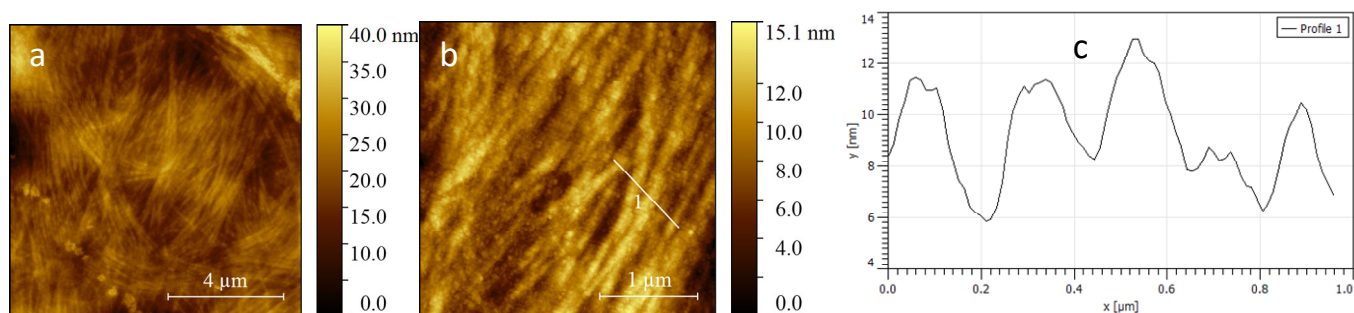


Figure S16. AFM images of G4-CD_4: (a) scale bar – 4 μm ; (b) scale bar – 1 μm ; (c) Z-profiles along the lines marked on the images.

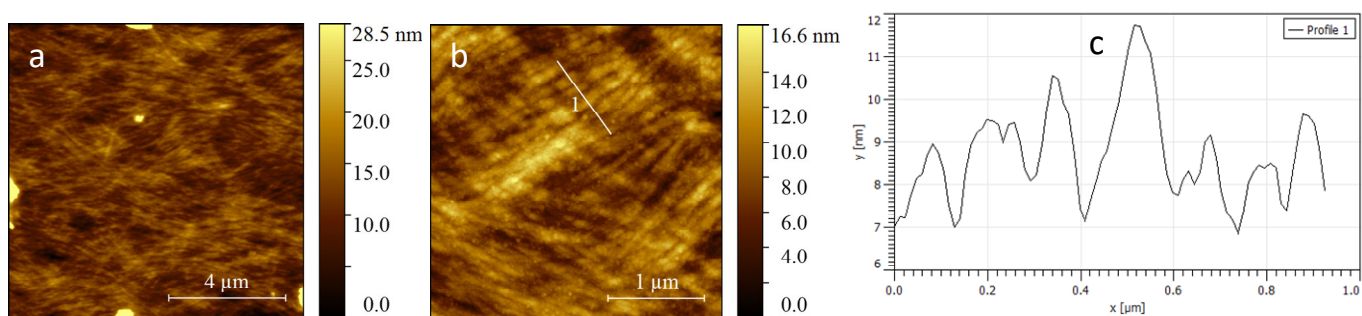


Figure S17. AFM images of G4-CD_5: (a) scale bar – 4 μm ; (b) scale bar – 1 μm ; (c) Z-profiles along the lines marked on the images.

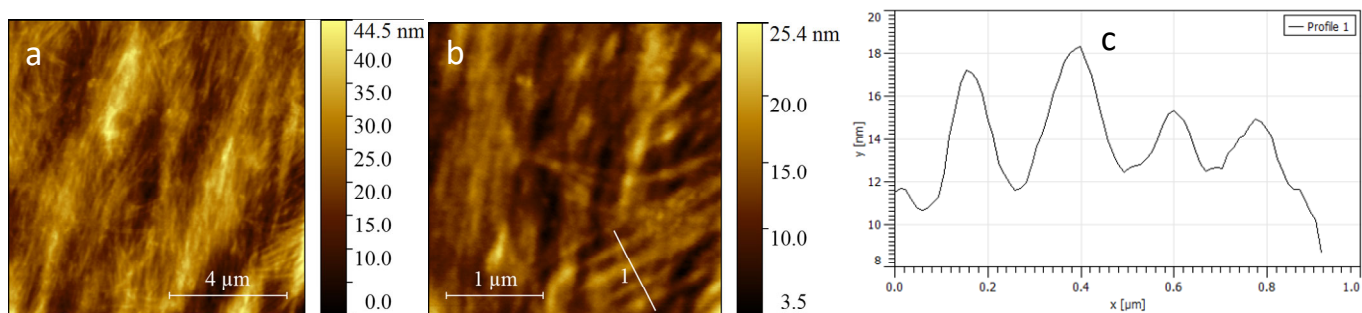


Figure S18. AFM images of G4-CD₆: (a) scale bar – 4 μm; (b) scale bar – 1 μm; (c) Z-profiles along the lines marked on the images.

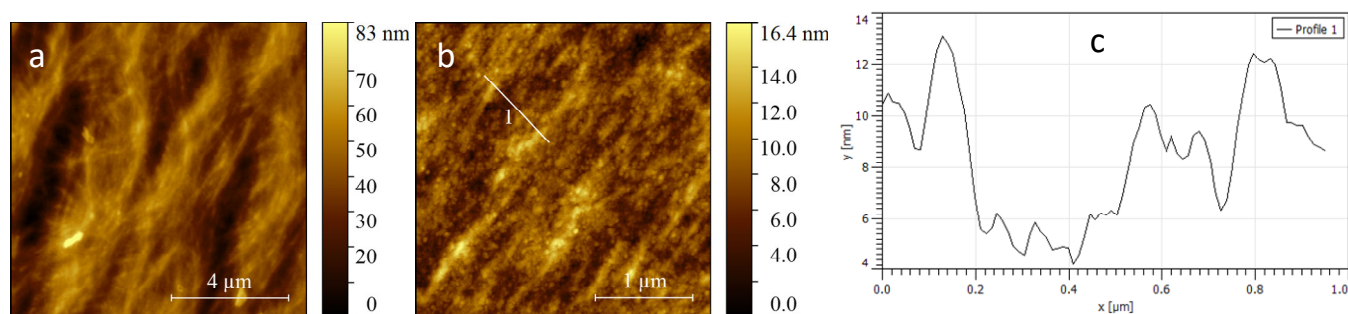


Figure S19. AFM images of G4-CD₇: (a) scale bar – 4 μm; (b) scale bar – 1 μm; (c) Z-profiles along the lines marked on the images.

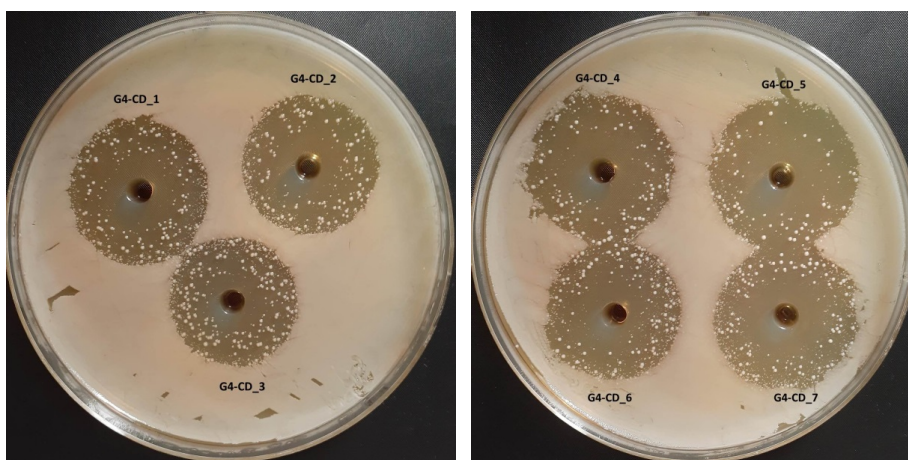


Figure S20. Antibacterial activity of the G4-CD_1-7 hydrogels against *S. aureus*.

Table S1. Antimicrobial activity of the G4-CD_1-7 hydrogels against the references strains.

Strains	Inhibition zone (mm)						
	G4-CD_1	G4-CD_2	G4-CD_3	G4-CD_4	G4-CD_5	G4-CD_6	G4-CD_7
<i>S. aureus</i>	30.30±1.50	30.80±0.80	29.21±0.37	32.99±0.03	33.21±0.71	31.95±0.19	32.13±0.92
<i>E. coli</i>	-	-	-	-	-	-	-
<i>E. faecalis</i>	-	-	-	-	-	-	-
<i>K. pneumoniae</i>	-	-	-	-	-	-	-
<i>S. typhimurium</i>	-	-	-	-	-	-	-
<i>C. albicans</i>	-	-	-	-	-	-	-
<i>C. glabrata</i>	-	-	-	-	-	-	-
<i>A. brasiliensis</i>	-	-	-	-	-	-	-