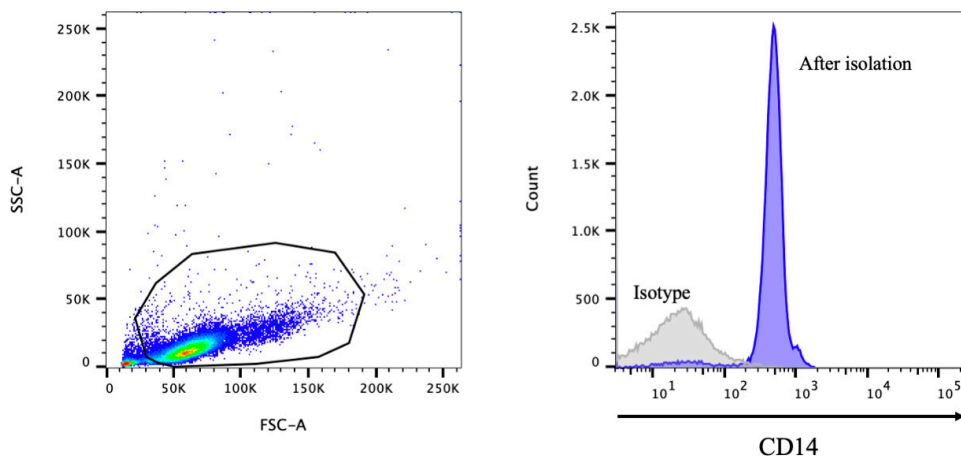
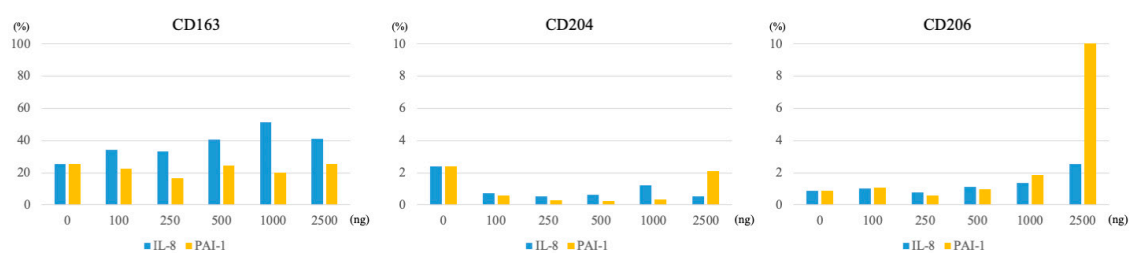


Supplementary Figure S1: Representative image for the co-culture of 7-AAD⁺TAM subsets co-cultured with OSCC cell lines (HSC-2, SQUU-A, and SQUU-B cells) for 4 days. The detailed methods for cultivating cells are described in the Materials and Methods section



Supplementary Figure S2: Purity of the isolated CD 14⁺ cells were as determined by flow cytometric analysis. The detailed methods for isolating cells are described in the Materials and Methods section.



Supplementary Figure S3: Positive rate of CD163, CD204, and CD206 in CD14⁺ monocytes stimulated with IL-8 or PAI-1, as determined by flow cytometric analysis.