

SUPPLEMENTAL MATERIAL

Plasticity enhancing effects of levodopa treatment after stroke

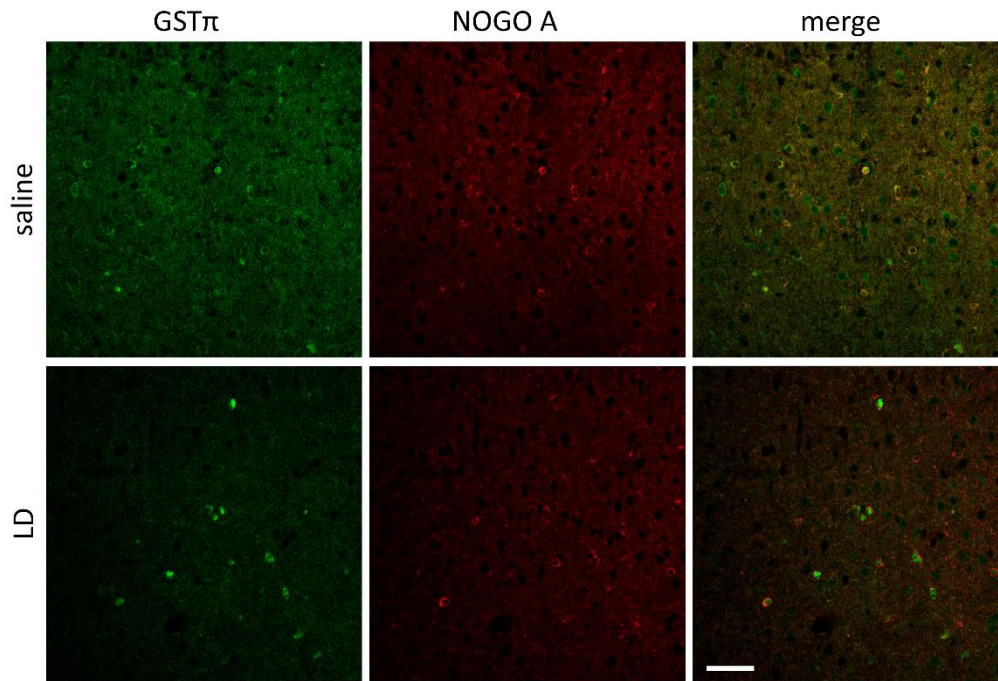
Daniela Talhada, PhD,¹ Niklas Marklund, MD, PhD,² Tadeusz Wieloch, PhD,¹ Enida Kuric, PhD,¹

Karsten Ruscher, MD^{1,2*}

¹Laboratory for Experimental Brain Research, Division of Neurosurgery, Department of Clinical Sciences, Lund University, Sweden.

²LUBIN Lab - Lunds Laboratorium för Neurokirurgisk Hjärnskadeforskning, Division of Neurosurgery, Department of Clinical Sciences, Lund University, Sweden.

*Corresponding Author: Dr. Karsten Ruscher, Associate Professor, Laboratory for Experimental Brain Research, Wallenberg Neuroscience Center, Lund University, BMC A13, S-22184 Lund, Sweden. Tel +46-46-2220613. email: karsten.ruscher@med.lu.se



Supplemental Figure I. Representative co-staining for glutathione-S-transferase π (GST- π , green, AF488) and Nogo A (red, Cy3) in the homotypic brain region of Sham operated rats, correspondent to the cortical peri infarct area of stroke animals. No statistical difference was observed in the quantification of NogoA+ oligodendrocytes between rats treated with saline (vehicle) or levodopa (LD 20 mg/kg) 14 days after transient middle cerebral artery occlusion. Scale bar 50 μ m.