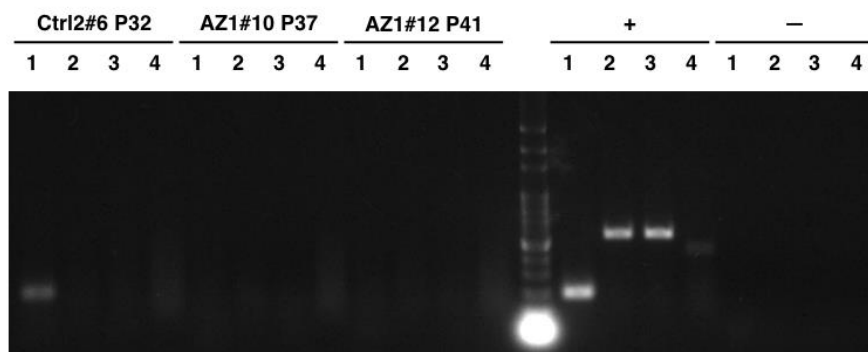


Effects of Survival Motor Neuron Protein on Germ Cell development in Mouse and Human

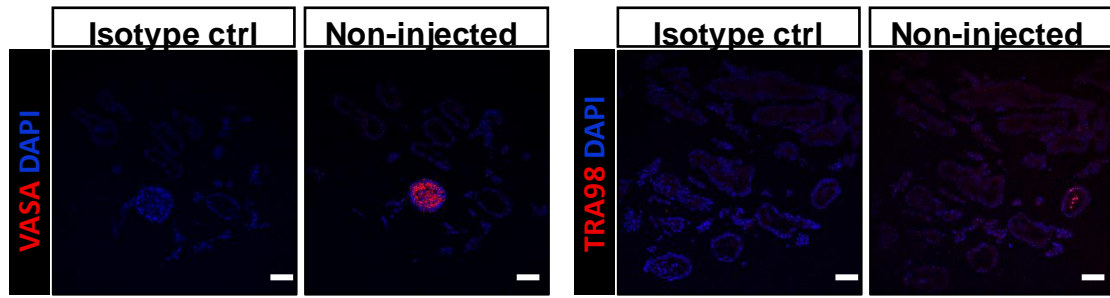
Wei-Fang Chang, Min Peng, Jing Hsu, Jie Xu, Huan-Chieh Cho, Hsiu-Mei Hsieh-Li, Ji-Long Liu, Chung-Hao Lu, and Li-Ying Sung

SUPPLEMENTAL INFORMATION



1. SeV (181 bp)
2. hOct4 and hSox2 (528 bp)
3. hc-Myc (532 bp)
4. hKlf4 (410 bp)

Supplementary Figure S1. Sendai virus detection of hiPSC lines by semin-quantitative RT-PCR. All hiPSC lines shows no exogenous OSKM expression, except the sendai virus genome was weakly detected in Ctrl2#6 hiPSC line. +: mouse lung cells infected OSKM Sendai virus. -: water without template as negative control.



Scale bar=50 μ m

Supplementary Figure S2. Validation of antibody specificity in IHC. The testis of ICR mice treated with busulfan for 4 months was used as the control for antibody detection.

Table S1. Primers for plasmid construction

| | |
|-----------------|--|
| 5`SpeI-hSMN1 | 5'-GACTAGTCATGGCGATGAGCAGCGGCGGCAGTGGTGGC-3' |
| 3`EcoRI-hSMN1 | 5'-GGAATTCCTTAATTTAAGGAATGTGAGCACCTTCCTTCTTTTTGAT-3' |
| 5' SpeI-SMN(ms) | 5'-GACTAGTCGTCATTGAGTGAGCCCGGCAGC-3' |
| 3`BamHI-SMN(ms) | 5'-CGGGATCCCTCCTGAGACAGAGCTGAACTTCTTA-3' |

Table S2. Primer sequences used for real-time RT-PCR.

| Targeting gene | Primer sequences |
|------------------------|--|
| hZFY | 5'-ACCRCTGACTGACTGTGATTACAC-3' and 5'-GCACYCTTTGGTATCYGAGAAAGT-3' |
| hSRY | 5'-GAATATCCCGCTCTCCGGA-3' and 5'-GCTGGTGCTCCATTCTTGAG-3' |
| G34990(hAZFa) | 5'-CATTCGGTTTTATCAGCCAG-3' and 5'-CAGTGACTCGAGGTTCAATG-3' |
| sY134(hAZFb) | 5'-GTCTGCCTCACCATAAAACG-3' and 5'-ACCACTGCCAAAACCTTTCAA-3' |
| sY255(hAZFc) | 5'-GTTACAGGATTCGGCGTGAT-3' and 5'-CTCGTCATGTGCAGCCAC-3' |
| mSmn1 | 5'-GCTCC GTGGA CCTCA TTTC-3' and 5'- GGGCC GTTGA ATTTT AGACC-3' |
| mGapdh | 5'-CCCTTCATTGACCTCAACTA-3' and 5'-CCAAAGTTGTCATGGATGAC-3' |
| SeV genome | 5'-GGATCACTAGGTGATATCGAGC-3' and 5'-ACCAGACAAGAGTTTAAGAGATATGTATC-3' |
| Exogenous Sendai hKOS | 5'-ATGCACCGCTACGACGTGAGCGC-3' and 5'-ACCTTGACAATCCTGATGTGG-3' |
| Exogenous Sendai KLF4 | 5'-TTCCTGCATGCCAGAGGA-3' and 5'-AATGTATCGAAGGTGCTCAACC-3' |
| Exogenous Sendai hcMyc | 5'-TAACTGACTAGCAGGCTTGTCG-3' and 5'-TCCACATACAGTCCTGGATGATG-3' |
| hOCT4 | 5'-AGTTTGTGCCAGGGTTTTTG-3' and 5'-ACTTCACCTTCCCTCCAACC-3' |
| hNANOG | 5'-TTTGGAAGCTGCTGGGGAAG-3' and 5'-GATGGGAGGAGGGGAGAGGA-3' |
| hSOX2_2 | 5'-GCGATGCCGACAAGAAAAC-3' and 5'- ACTTCCTGCAAAGCTCCTACC-3' |
| hEOMES | 5'-CTGGCTTCCGTGCCACGTC-3' and 5'- CATGCGCCTGCCCTGTTTCG-3' |
| hKLF4 | 5'-TACCAAGAGCTCATGCCACC-3' and 5'- CGCGTAATCACAAGTGTGGG-3' |
| hSTELLA | 5'-ACGCCGATGGACCCATCACAGTTT-3' and 5'-TCTCGGAGGAGATTTGAGAGGCC-3' |
| hBRACHURY | 5'-ACCCAGTTCATAGCGGTGAC-3' and 5'-CCATTGGGAGTACCCAGGT-3' |
| hSOX17 | 5'-ACGCCGAGTTGAGCAAGA-3' and 5'-GTGCAGGAAGCCGCCCTC-3' |
| hBLIMP1 | 5'-CAGTGTTGCGGAGAGGCAAG-3' and 5'-TCTGCCAATCCCTGAAACCTC-3' |
| TFAP2C | 5'-CGCTCATGTGACTCTCCTGACATCC-3' and 5'- |

| | |
|--------|--|
| | TGGGCCGCCAATAGCATGTTCT-3' |
| hGAPDH | 5'-AGGGCTGCTTTTAACTCTGGT-3' and 5'- CCCCACTTGATTTTGGAGGGA-3' |