

Supplementary Material

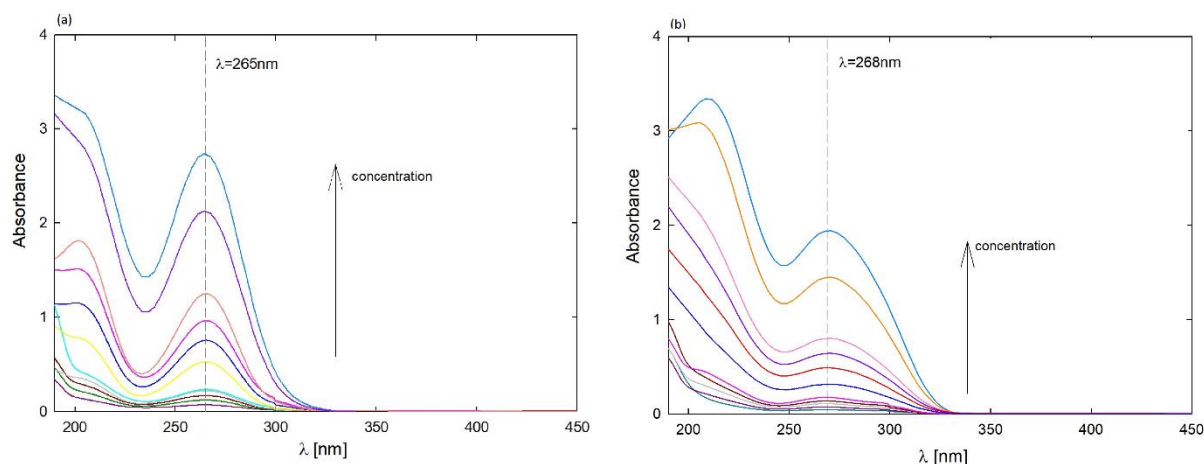


Figure S1. UV-Vis spectra of an aqueous 5FU solution ($c = 7.7\text{-}192 \mu\text{M}$). a) at pH = 7.5; b) at pH = 10.

Table S1. Statistically significant differences in L929 cell viability after incubation for 7 days in presence of 10% v/v G4PAMAM and G6PAMAM dendrimers, 5-FU and G4-5FU and G6-5FU complexes determined by one-way ANOVA followed by post-hoc Tukey test at $\alpha=0.05$.

	Control	G4PAMAM	G6PAMAM	5FU	G4-5FU	G6-5FU
Control		n.s. ¹	n.s.	<0.001	<0.001	<0.001
G4PAMAM	n.s.		n.s.	<0.001	<0.001	<0.001
G6PAMAM	n.s.	n.s.		<0.001	<0.001	<0.001
5FU	<0.001	<0.001	<0.001		n.s.	n.s.
G4-5FU	<0.001	<0.001	<0.001	n.s.		0.045
G6-5FU	<0.001	<0.001	<0.001	n.s.	0.045	

¹n.s. – not significant.

Table S2. Statistically significant differences in L929 cell viability after incubation for 7 days in presence of 5% v/v G4PAMAM and G6PAMAM dendrimers, 5-FU and G4-5FU and G6-5FU complexes determined by one-way ANOVA followed by post-hoc Tukey test at $\alpha=0.05$.

	Control	G4PAMAM	G6PAMAM	5FU	G4-5FU	G6-5FU
Control		n.s.	n.s.	<0.001	<0.001	<0.001
G4PAMAM	n.s.		n.s.	<0.001	<0.001	<0.001
G6PAMAM	n.s.	n.s.		<0.001	<0.001	<0.001
5FU	<0.001	<0.001	<0.001		n.s.	0.022
G4-5FU	<0.001	<0.001	<0.001	n.s.		0.027
G6-5FU	<0.001	<0.001	<0.001	0.022	0.027	

Table S3. Statistically significant differences in A375 cell viability after incubation for 7 days in presence of 1% v/v G4PAMAM and G6PAMAM dendrimers, 5-FU and G4-5FU and G6-5FU complexes determined by one-way ANOVA followed by post-hoc Tukey test at $\alpha=0.05$.

	Control	G4PAMAM	G6PAMAM	5FU	G4-5FU	G6-5FU
Control		n.s.	n.s.	n.s.	n.s.	n.s.
G4PAMAM	n.s.		n.s.	n.s.	n.s.	n.s.
G6PAMAM	n.s.	n.s.		n.s.	n.s.	n.s.
5FU	n.s.	n.s.	n.s.		n.s.	n.s.
G4-5FU	n.s.	n.s.	n.s.	n.s.		0.033

G6-5FU	n.s.	n.s.	n.s.	n.s.	0.033	
---------------	------	------	------	------	-------	--

Table S4. Statistically significant differences in SNB-19 cell viability after incubation for 7 days in presence of 1% v/v G4PAMAM and G6PAMAM dendrimers, 5-FU and G4-5FU and G6-5FU complexes determined by one-way ANOVA followed by post-hoc Tukey test at $\alpha=0.05$.

	Control	G4PAMAM	G6PAMAM	5FU	G4-5FU	G6-5FU
Control		n.s.	<0.001	<0.001	<0.001	<0.001
G4PAMAM	n.s.		<0.001	<0.001	<0.001	<0.001
G6PAMAM	<0.001	<0.001		0.0178	<0.001	<0.001
5FU	<0.001	<0.001	0.0178		n.s.	0.0194
G4-5FU	<0.001	<0.001	<0.001	n.s.		n.s.
G6-5FU	<0.001	<0.001	<0.001	0.0194	n.s.	

Table S5. Statistically significant differences in Du-145 cell viability after incubation for 7 days in presence of 1% v/v G4PAMAM and G6PAMAM dendrimers, 5-FU and G4-5FU and G6-5FU complexes determined by one-way ANOVA followed by post-hoc Tukey test $\alpha = 0.05$.

	Control	G4PAMAM	G6PAMAM	5FU	G4-5FU	G6-5FU
Control		n.s.	n.s.	<0.001	<0.001	<0.001
G4PAMAM	n.s.		n.s.	<0.001	<0.001	<0.001
G6PAMAM	n.s.	n.s.		<0.001	<0.001	<0.001
5FU	<0.001	<0.001	<0.001		n.s.	n.s.
G4-5FU	<0.001	<0.001	<0.001	n.s.		n.s.
G6-5FU	<0.001	<0.001	<0.001	n.s.	n.s.	

Table S6. Statistically significant differences in HT-29 cell viability after incubation for 7 days in presence of 1% v/v G4PAMAM and G6PAMAM dendrimers, 5-FU and G4-5FU and G6-5FU complexes determined by one-way ANOVA followed by post-hoc Tukey test at $\alpha=0.05$.

	Control	G4PAMAM	G6PAMAM	5FU	G4-5FU	G6-5FU
Control		n.s.	<0.001	<0.001	<0.001	<0.001
G4PAMAM	n.s.		n.s.	0.0054	0.0020	<0.001
G6PAMAM	<0.001	n.s.		0.0195	0.0073	<0.001
5FU	<0.001	0.0054	0.0195		n.s.	n.s.
G4-5FU	<0.001	0.0020	0.0073	n.s.		n.s.
G6-5FU	<0.001	<0.001	<0.001	n.s.	n.s.	