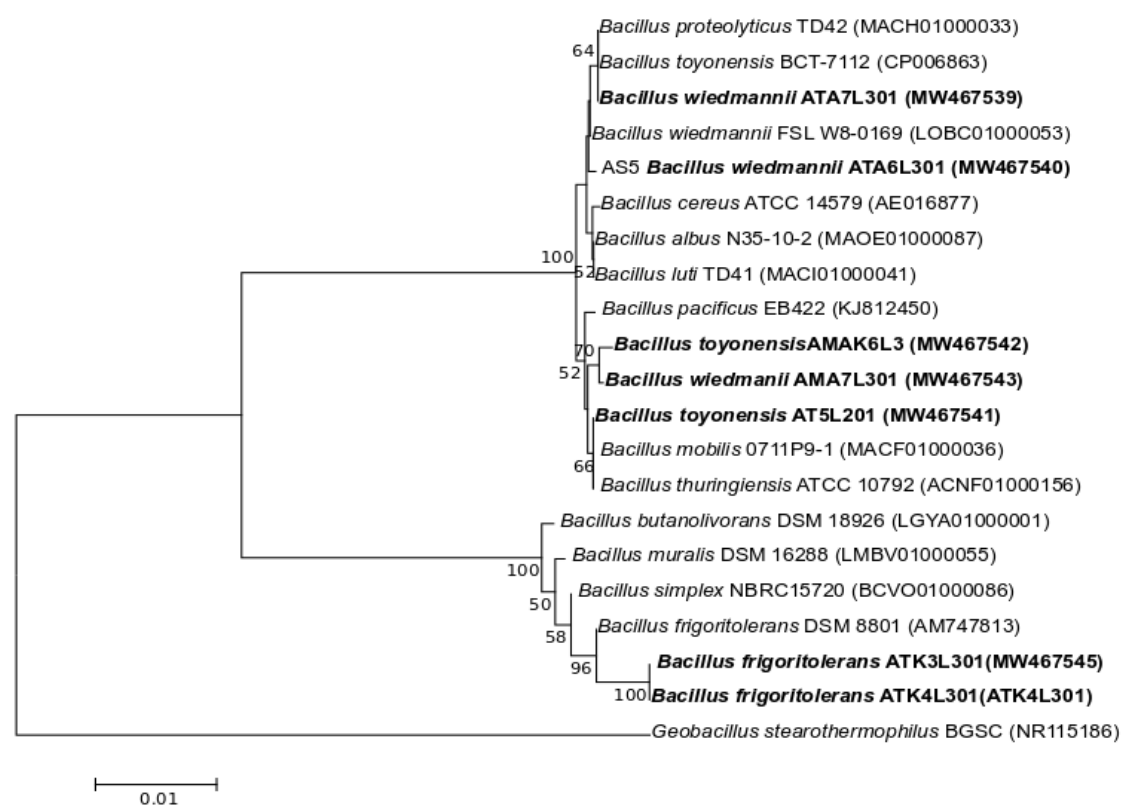


Supplementary data

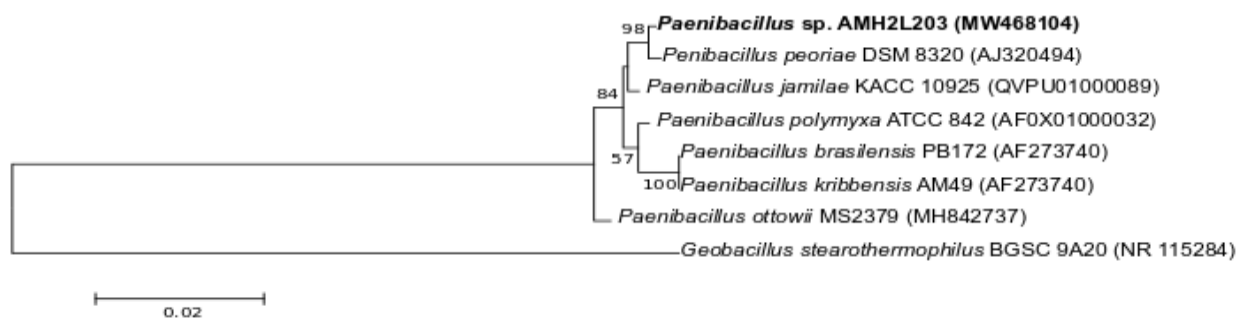
Article: Screening and Molecular Identification of Bacteria from the Midgut of *Amphimallon solstitiale* Larvae Exhibiting Antagonistic Activity Against Bacterial Symbionts of Entomopathogenic Nematodes

Authors: Marcin Skowronek, Ewa Sajnaga, Waldemar Kazimierczak, Magdalena Lis and Adrian Wiater

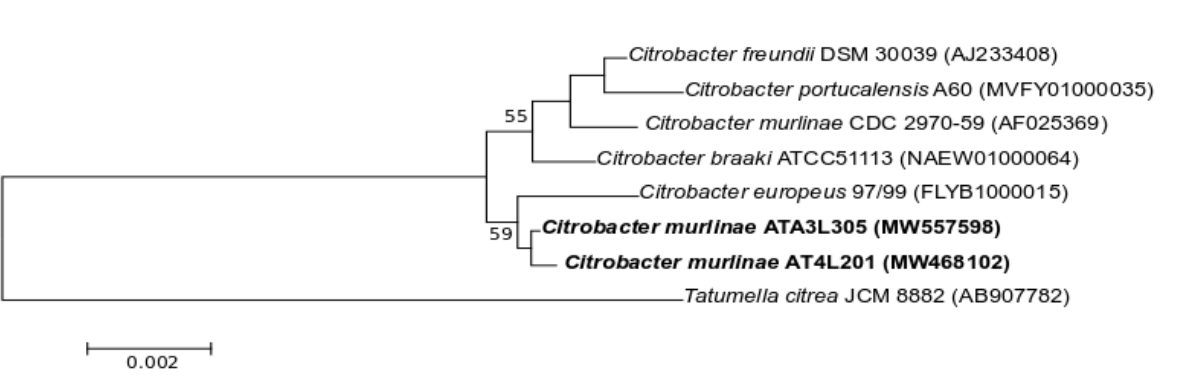
A)



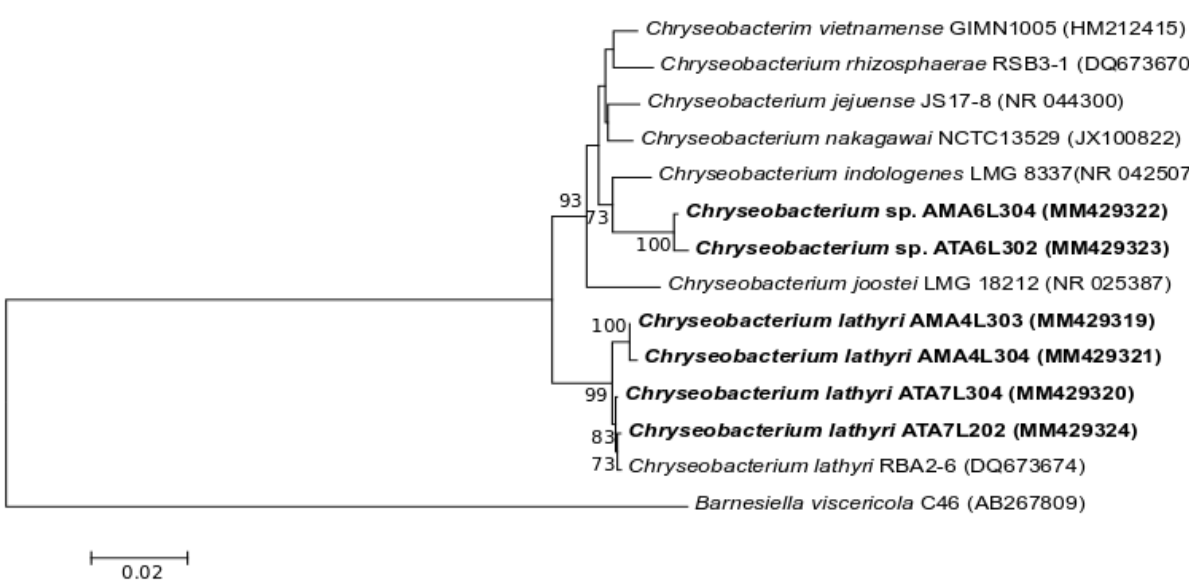
B)



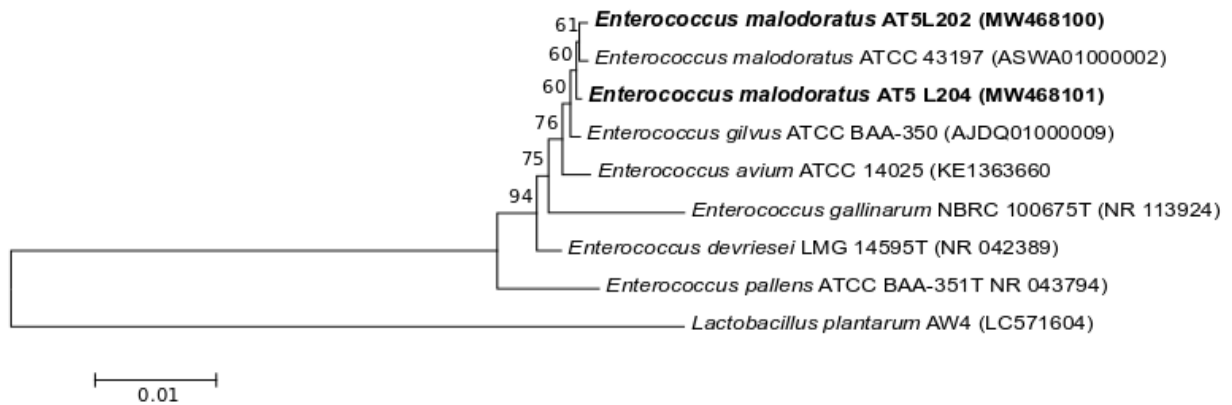
C)



D)



E)



F)

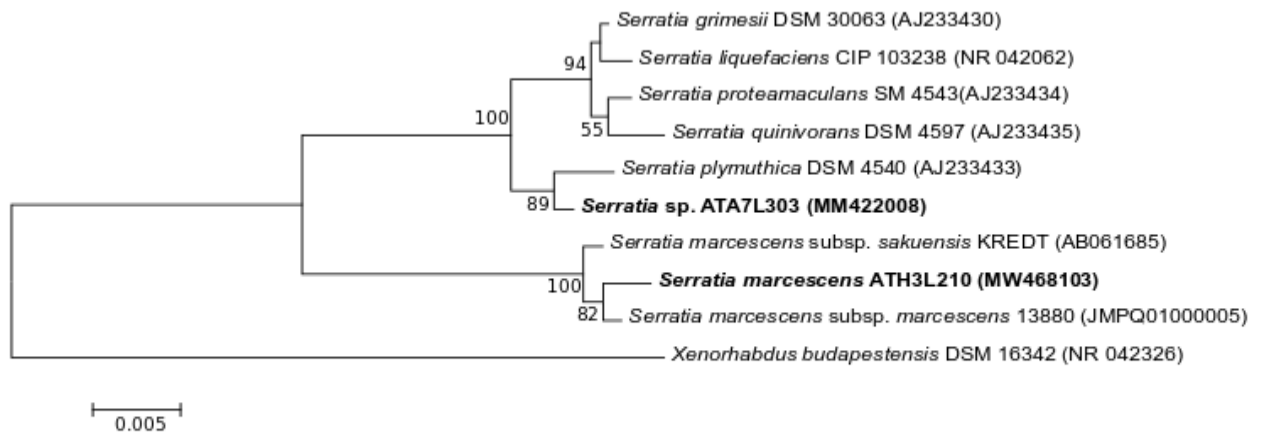
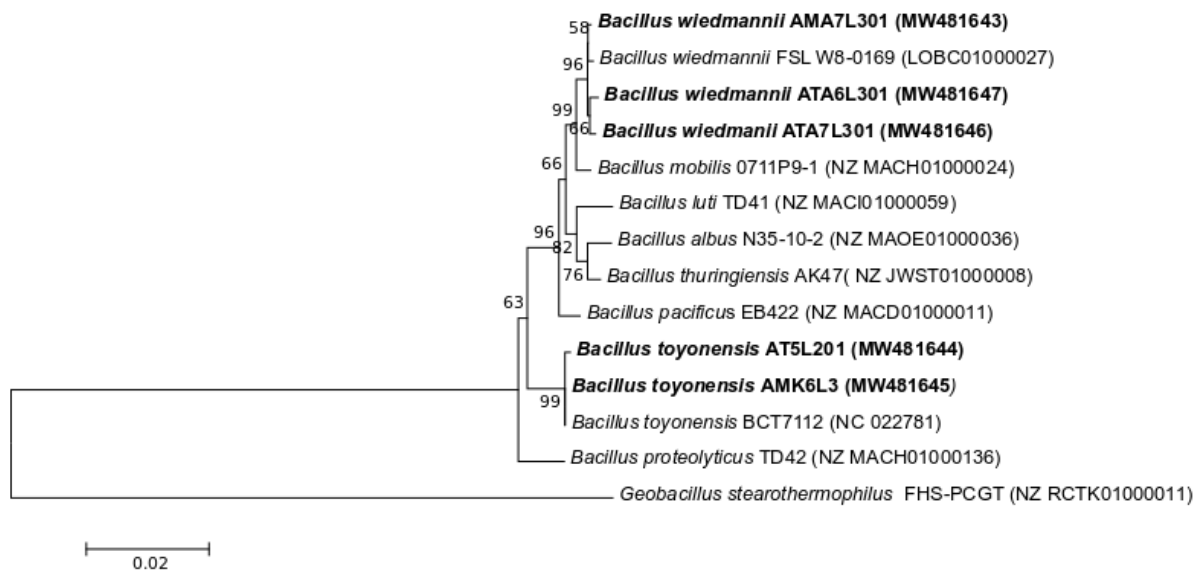
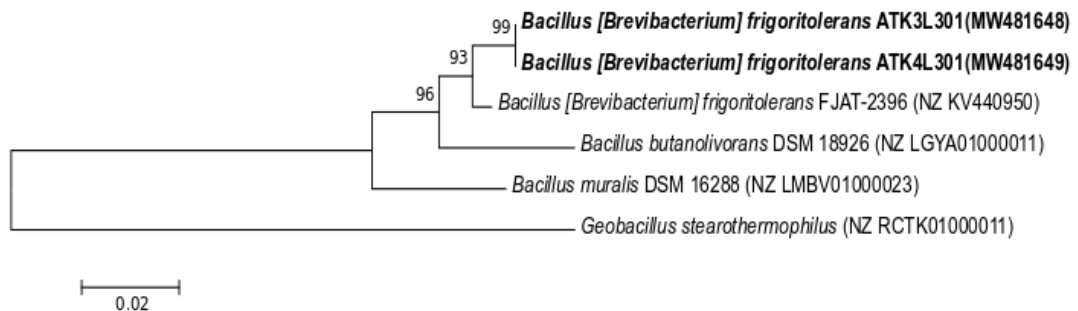


Figure S1. Phylogenetic relationships among representative *Amphimallon solstitile* midgut isolates and type strains of bacteria belonging to the genera: A) *Bacillus*; B) *Paenibacillus*; C) *Citrobacter*; D) *Chryseobacterium*; E) *Enterococcus*; F) *Serratia* based on 16S rRNA gene sequence analysis neighbor-joining method. The GenBank accession numbers are given in parenthesis. Bootstrap values $\geq 50\%$ are displayed at branching points. The sequences generated from this study are listed in bold.

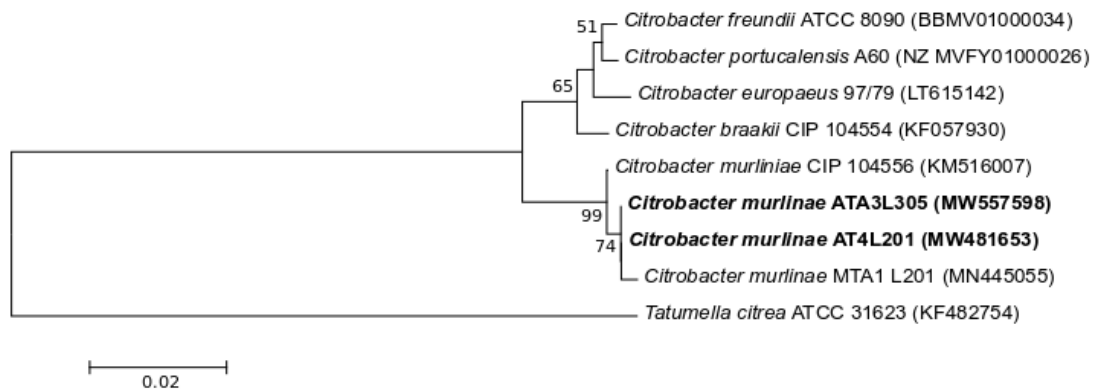
A)



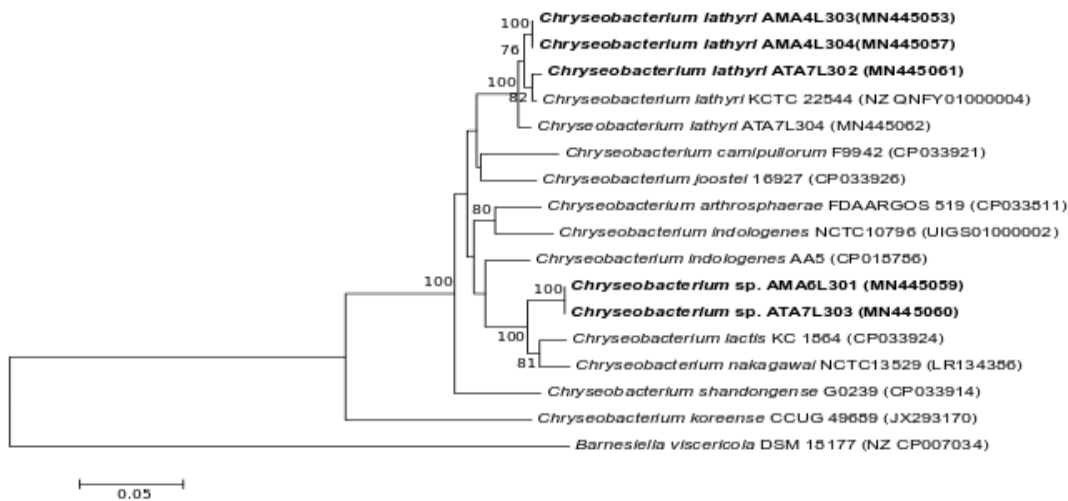
B)



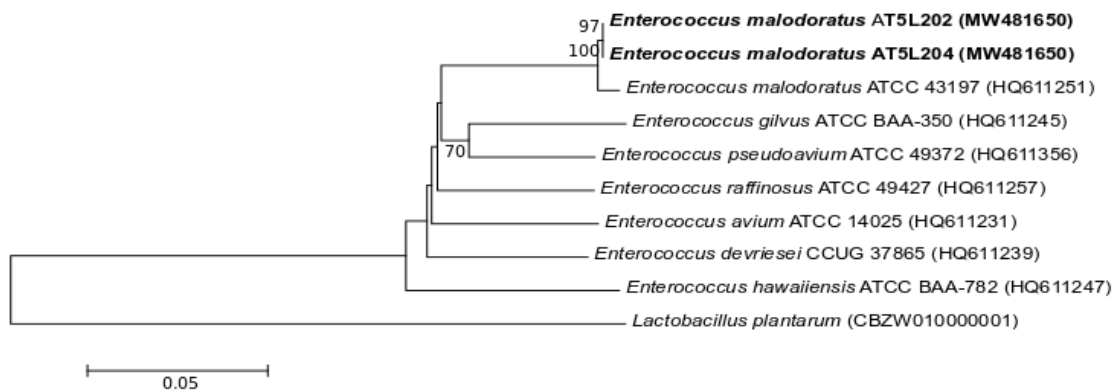
C)



D)



E)



F)

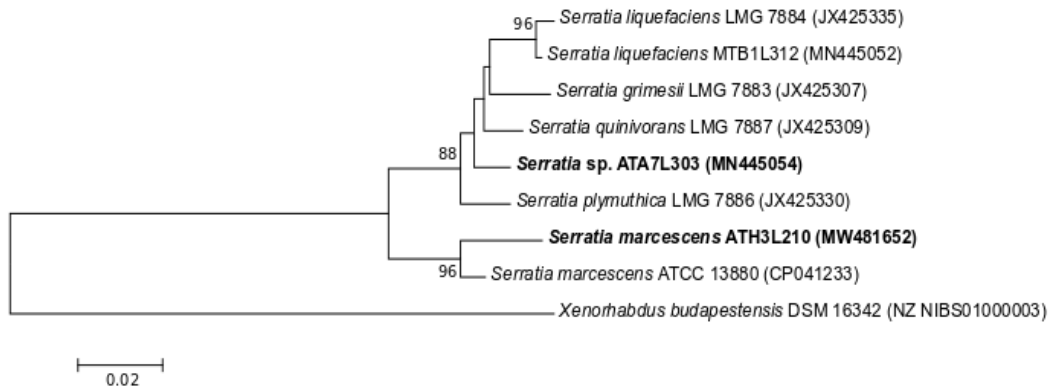


Figure S2. Phylogenetic relationships among representative *Amphimallon solstitile* midgut isolates and type strains of bacteria belonging to the genera: A, B) *Bacillus*; C) *Citrobacter*; D) *Chryseobacterium*; E) *Enterococcus*; F) *Serratia* based on *rpoB* gene sequence analysis with the neighbor-joining method. The GenBank accession numbers are given in parenthesis. Bootstrap values $\geq 50\%$ are displayed at branching points. The sequences generated from this study are listed in bold.

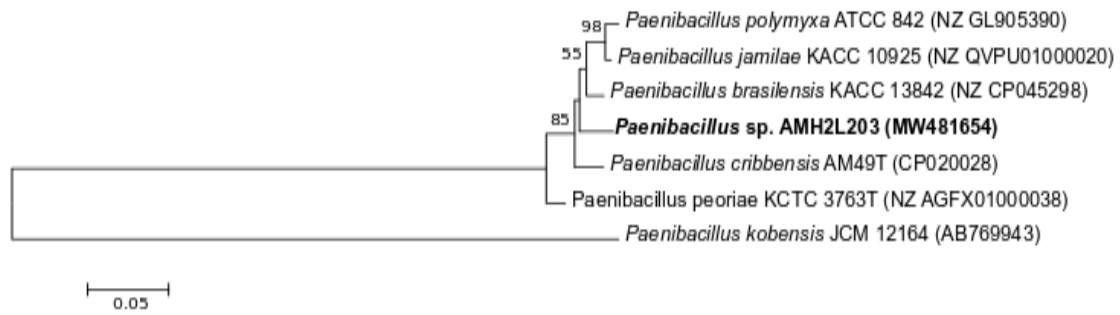


Figure S3. Phylogenetic relationships among representative *Amphimallon solstitiale* midgut isolates and type strains of bacteria belonging to the genus *Paenibacillus* based on *gapA* gene sequence analysis with the neighbor-joining method. The GenBank accession numbers are given in parenthesis. Bootstrap values $\geq 50\%$ are displayed at branching points. The sequences generated from this study are listed in bold.