

# SUPPLEMENTARY MATERIAL

## Expression of Endogenous Angiotensin-Converting Enzyme 2 in Human Induced Pluripotent Stem Cell-Derived Retinal Organoids

Henkie Isahwan Ahmad Mulyadi Lai <sup>1,2</sup>, Shih-Jie Chou <sup>1,3</sup>, Yueh Chien <sup>3,4</sup>, Ping-Hsing Tsai <sup>1,3</sup>, Chian-Shiu Chien <sup>1,3</sup>, Chih-Chien Hsu <sup>4,5</sup>, Ying-Chun Jheng <sup>3,6</sup>, Mong-Lien Wang <sup>3,4,7</sup>, Shih-Hwa Chiou <sup>1,3,4,5</sup>, Yu-Bai Chou <sup>4,5</sup>, Der-Kaung Huang <sup>4,5</sup>, Tai-Chi Lin <sup>4,5\*</sup>, Shih-Jen Chen <sup>4,5\*</sup> and Yi-Ping Yang <sup>3,4,7\*</sup>

<sup>1</sup> Institute of Pharmacology, School of Medicine, National Yang-Ming University, Taipei 11217, Taiwan; henkie@gm.ym.edu.tw (H.I.A.M.L.); 49906001@gm.ym.edu.tw (S.-J.C.); figatsai@gmail.com (P.-H.T.); shchiou@vghtpe.gov.tw (S.-H.C.)

<sup>2</sup> Department of Medical Laboratory, Faculty of Health Sciences, University Selangor, Selangor 40000, Malaysia; henkie@unisel.edu.my (H.I.A.M.L.)

<sup>3</sup> Division of Basic Research, Department of Medical Research, Taipei Veterans General Hospital, Taipei 11217, Taiwan; g39005005@gmail.com (Y.C.); polo661124@yahoo.com.tw (C.-S. C.); cycom1220@gmail.com (Y.-C.J); monglien@gmail.com (M.-L.W); molly0103@gmail.com (Y.P.Y.)

<sup>4</sup> School of Medicine, National Yang-Ming University, Taipei 11217, Taiwan; g39005005@gmail.com (Y.C.); chihchienym@gmail.com (C.-C.H.); chouhoume@hotmail.com (Y.-B.C.); m95gbk@gmail.com (D.-K.H); taichilin@hotmail.com (T.-C.L.); sjchen@vghtpe.gov.tw (S.-J.C)

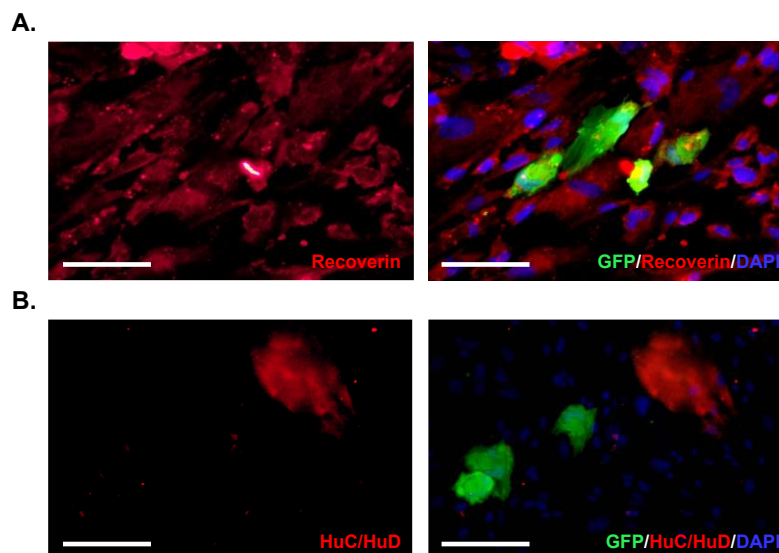
<sup>5</sup> Department of Ophthalmology, Taipei Veterans General Hospital, Taipei 11217, Taiwan

<sup>6</sup> Department of Physical Therapy and Assistive Technology, National Yang-Ming University, Taipei, Taiwan

<sup>7</sup> Institute of Food Safety and Health Risk Assessment, National Yang-Ming University, Taipei 11217, Taiwan

\* Correspondence: molly0103@gmail.com; Tel.: +886-2-2875-7394

### S1.



**Figure S1.** Representative immunofluorescence staining of infection of monolayer cultures with SARS-CoV-2 pseudovirus. **(A)** Double immunofluorescence staining for Recoverin: photoreceptor marker and GFP: SARS-CoV-2 pseudovirus. **(B)** Double immunofluorescence staining for HuC/HuD: neuron marker and GFP: SARS-CoV-2 pseudovirus. The GFP signals (right subpanel) indicated the infection of SARS-CoV-2 pseudovirus (MOI = 1, dpi = 6). Scale bar, 50  $\mu$ m.