

Supplementary Materials

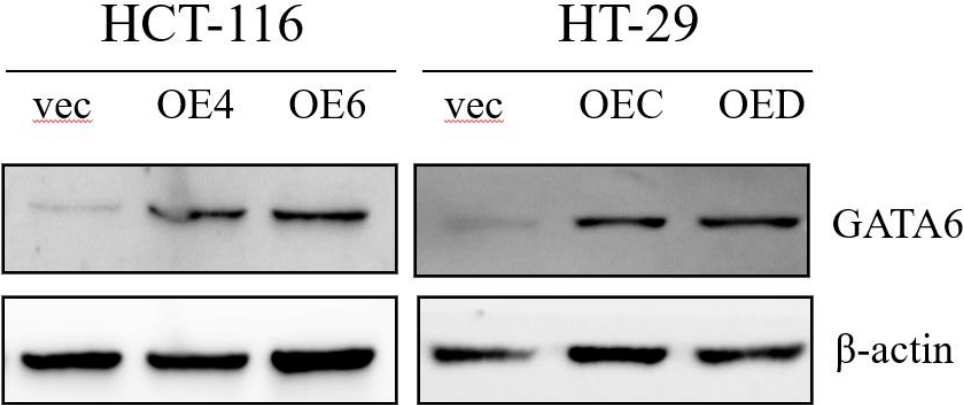


Figure S1. The protein levels of GATA6 in the GATA6-overexpressing HCT-116- and HT-29 clones, respectively. Total lysates (20 μ g) prepared from the vector- and GATA6-overexpressing HCT-116 and HT-29 clones, respectively, were subjected to western blot analyses using antibodies against GATA6. β -actin signals were used as loading controls.