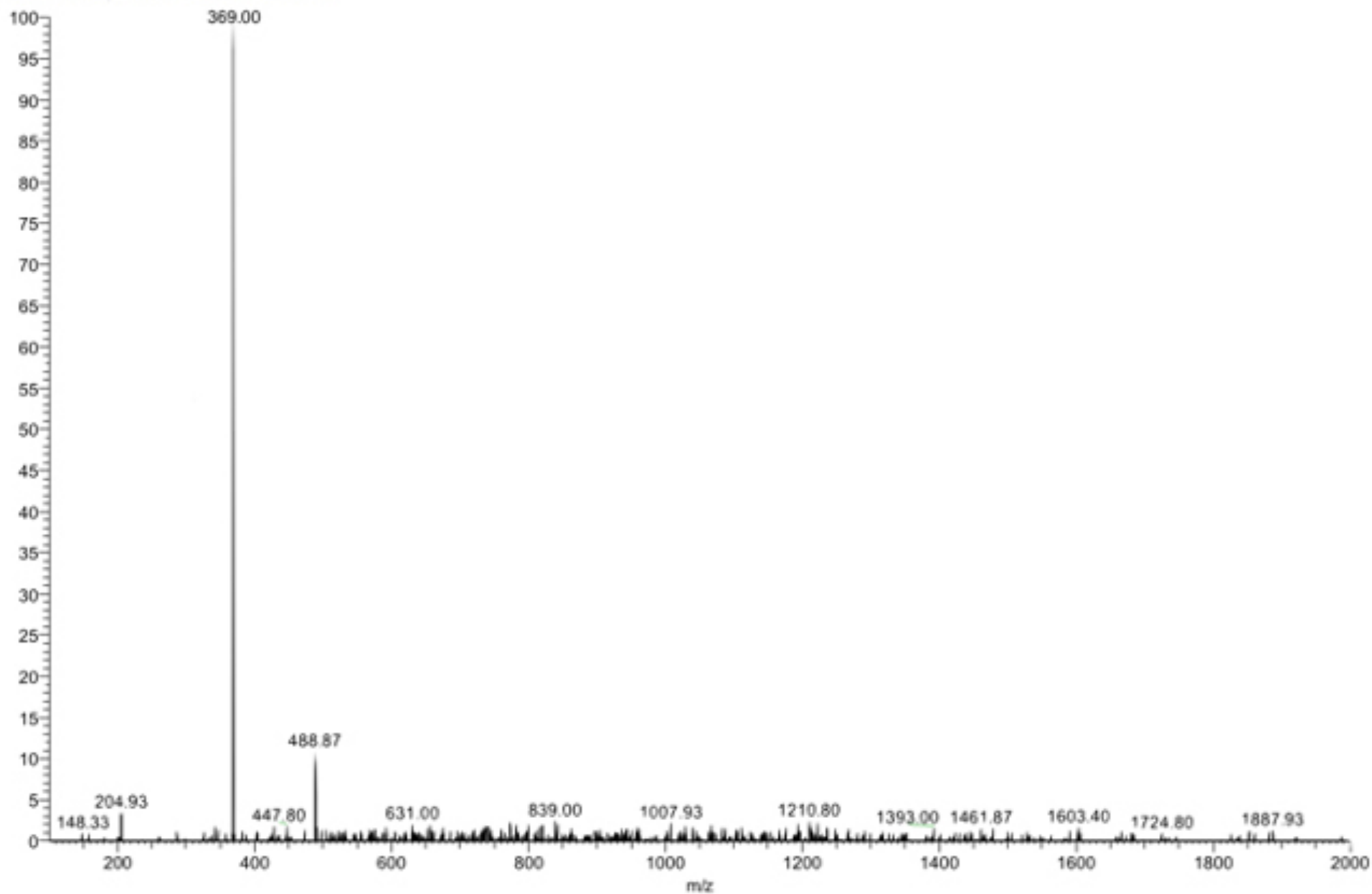
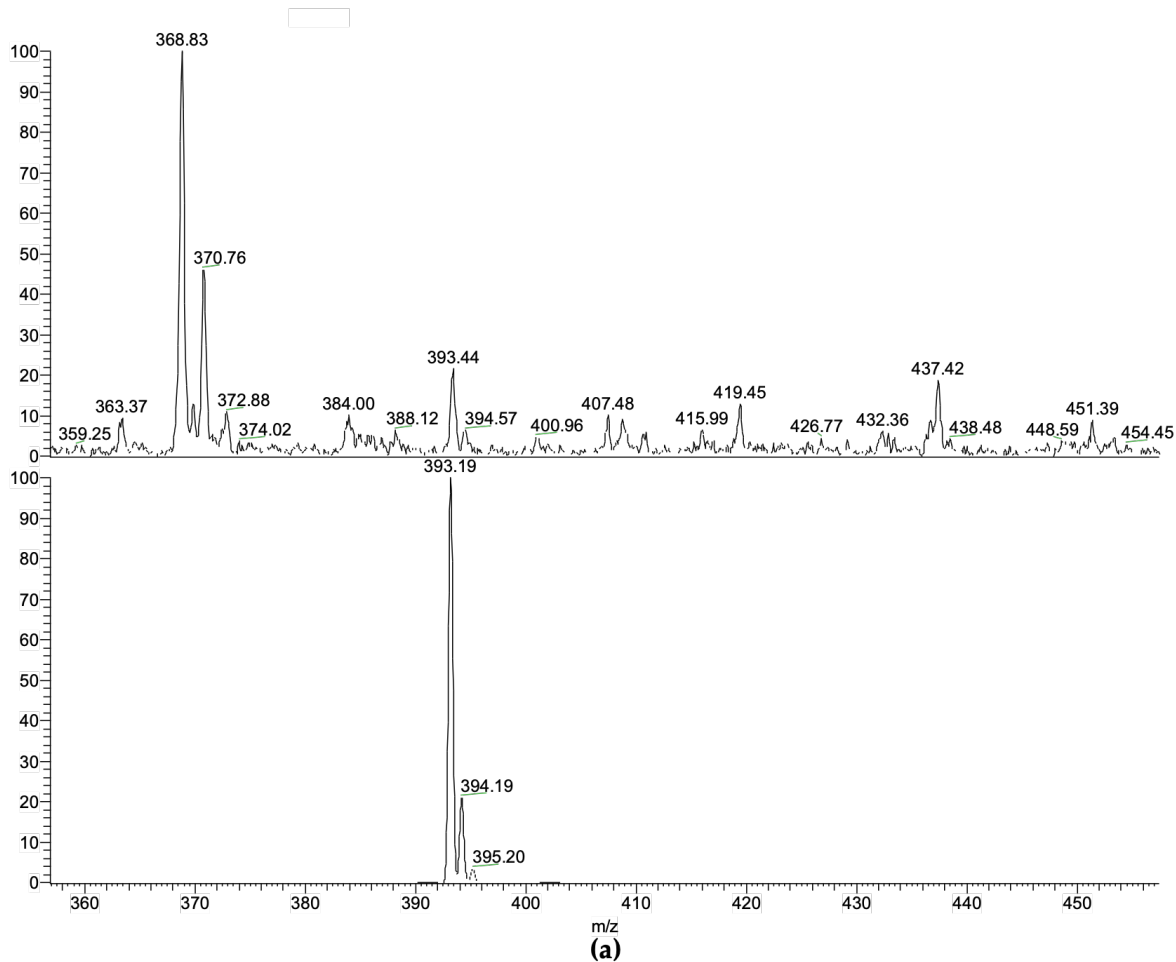


macchia0BU#12-25 RT: 0.35-0.74 AV: 14 NL: 1.09E4
T: -p ESI sid=25.00 Full ms [100.00-2000.00]

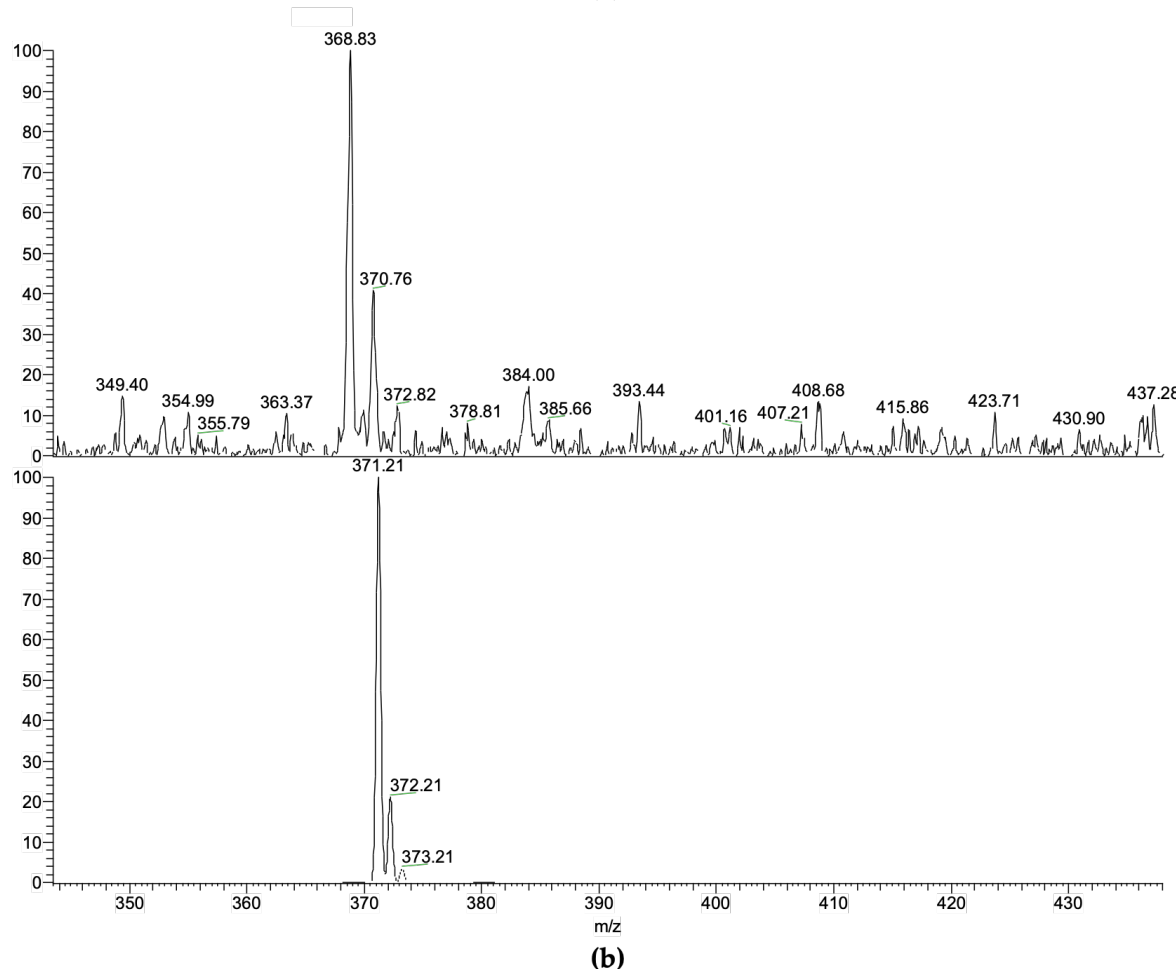


HPTLC-mass spectra in negative ionization mode of the chemically synthesized IBU-sorbitol ester (m/z 369).



NL:
1.99E5
IBUS3esanoinfusoCH3
OH#42-84 RT:
1.18-2.35 AV: 43 T: +
p ESI Full ms
[190.00-2000.00]

NL:
4.32E4
C₁₉H₃₀O₇+Na:
C₁₉H₃₀O₇Na:
p (gss, s/p:40) Chrg 1
R: 1 Da @5%



NL:
8.27E4
IBUS3esanoinfusoCH
3OH#1 RT: 0.01 AV:
1 T: + p ESI Full ms
[190.00-2000.00]

NL:
4.32E4
C₁₉H₃₀O₇+H:
C₁₉H₃₁O₇
p (gss, s/p:40) Chrg 1
R: 1 Da @5%

ESI+, HPTLC-MS analysis of lipase-catalyzed esterification of ibuprofen with sorbitol by free PPL in biphasic media.
(a) Na⁺ adduct of IBU-sorbitol ester. (b) H⁺ adduct of IBU-sorbitol ester.

