



Supplementary materials

Functionalized Peptide Fibrils as a Scaffold for Active Substances in Wound Healing

Justyna Sawicka ^{1,†}, Emilia Iłowska ^{2,†}, Milena Deptuła ³, Paweł Sosnowski ⁴, Piotr Sass ⁴, Katarzyna Czerwiec ⁵, Klaudia Chmielewska ³, Aneta Szymańska ¹, Zuzanna Pietralik-Molińska ⁶, Maciej Kozak ⁶, Paweł Sachadyn ⁴, Michał Pikula ^{3,*} and Sylwia Rodziewicz-Motowidło ^{1,*}

¹ Department of Biomedical Chemistry, Faculty of Chemistry, University of Gdańsk, 80-308 Gdańsk, Poland; justyna.sawicka@ug.edu.pl (J.S.); aneta.szymanska@ug.edu.pl (A.S.)

² Department of Organic Chemistry, Faculty of Chemistry, University of Gdańsk, 80-308 Gdańsk, Poland; emilia.ilowska@ug.edu.pl

³ Laboratory of Tissue Engineering and Regenerative Medicine, Department of Embryology, Medical University of Gdańsk, 80-210 Gdańsk, Poland; milenadeptula@gumed.edu.pl (M.D.); klaudia.chm@gmail.com (K.C.)

⁴ Laboratory for Regenerative Biotechnology, Faculty of Chemistry, Gdańsk University of Technology, 80-233 Gdańsk, Poland; paw.sosno@gmail.com (P.S.; Paweł Sosnowski); piotrsass@gmail.com (P.S.; Piotr Sass); psach@pg.edu.pl (P.S.; Paweł Sachadyn)

⁵ Department of Clinical Anatomy, Medical University of Gdańsk, 80-210 Gdańsk, Poland; katarzyna.czerwiec@gumed.edu.pl

⁶ Department of Macromolecular Physics, Faculty of Physics, Adam Mickiewicz University in Poznań, 61-712 Poznań, Poland; zuzannap@amu.edu.pl (Z.P.-M.); mkozak@amu.edu.pl (M.K.)

* Correspondence: pikula@gumed.edu.pl (M.P.); s.rodziewicz-motowidlo@ug.edu.pl (S.R.-M.); Tel.: +48-58-3491368 (M.P.); +48-58-5235037 (S.R.-M.)

† Equal contribution.

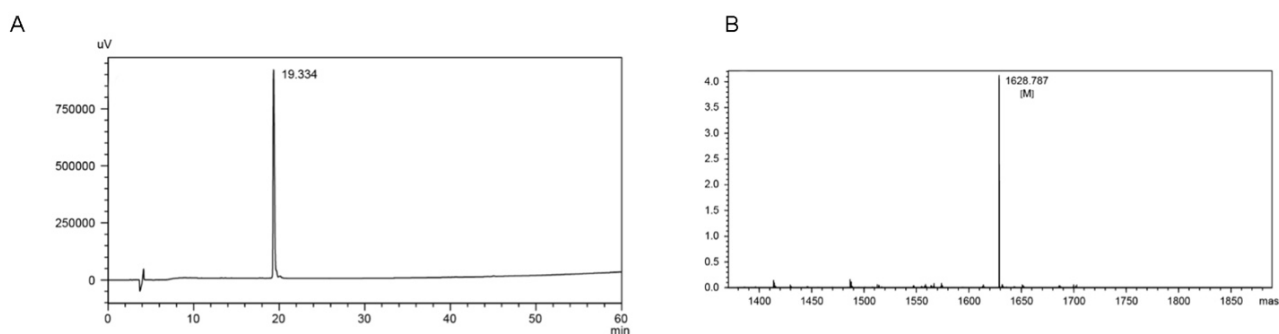


Figure S1. Examples of (A) Chromatogram and (B) mass spectra for the FC-GHK peptide after purification process.

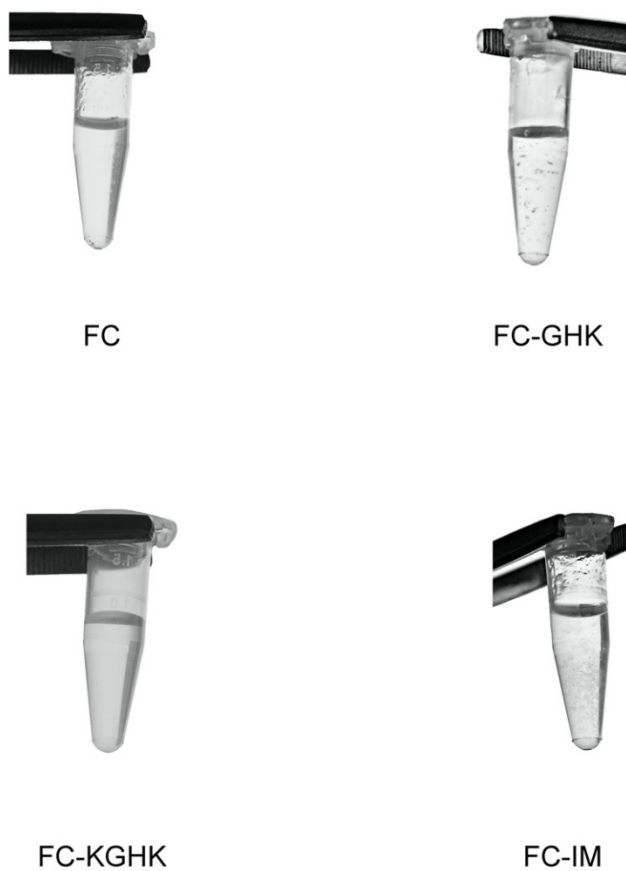


Figure S2. Photos of the precipitated peptides (FC, FC-GHK, FC-KGHK, FC-IM) obtained after seven days of incubation.

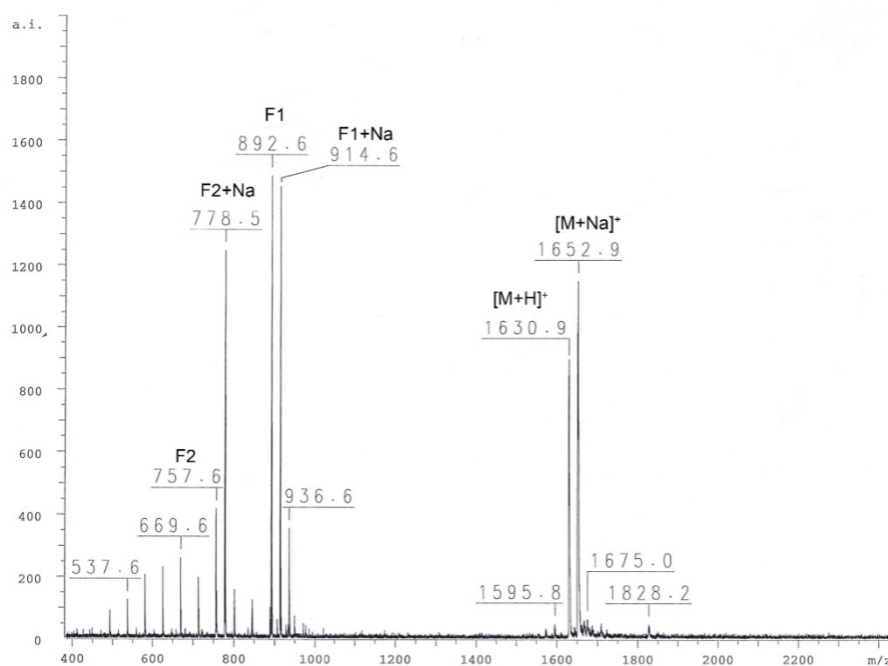


Figure S3. Mass spectra for FC-GHK after 30 min of incubation with neutrophil elastase.

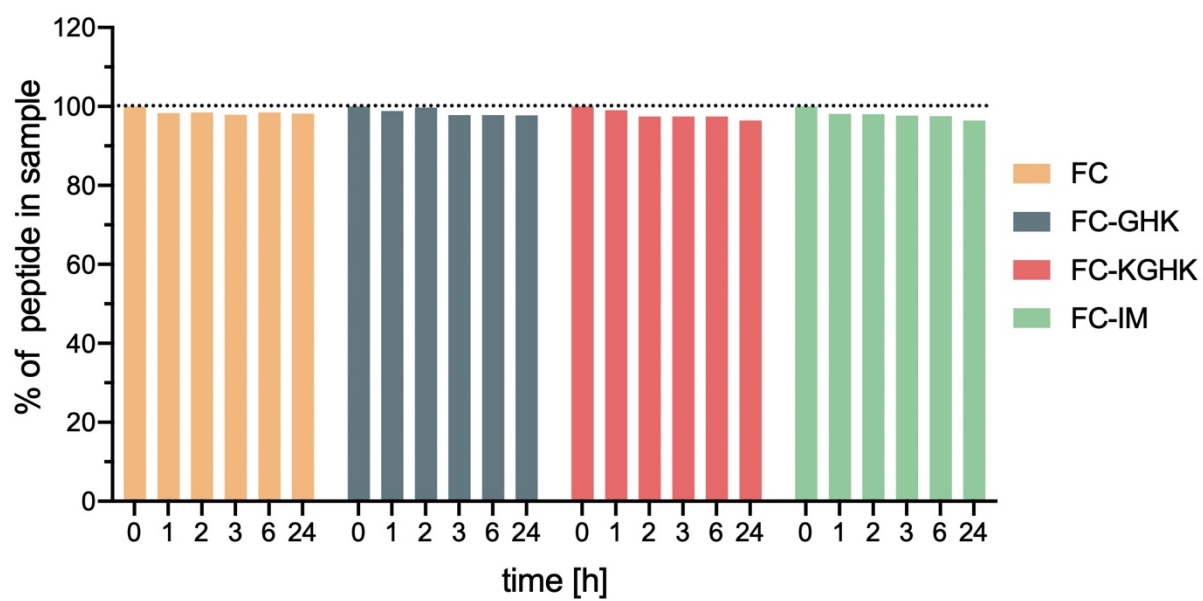


Figure S4. Peptide stability in water over 24 h incubation.

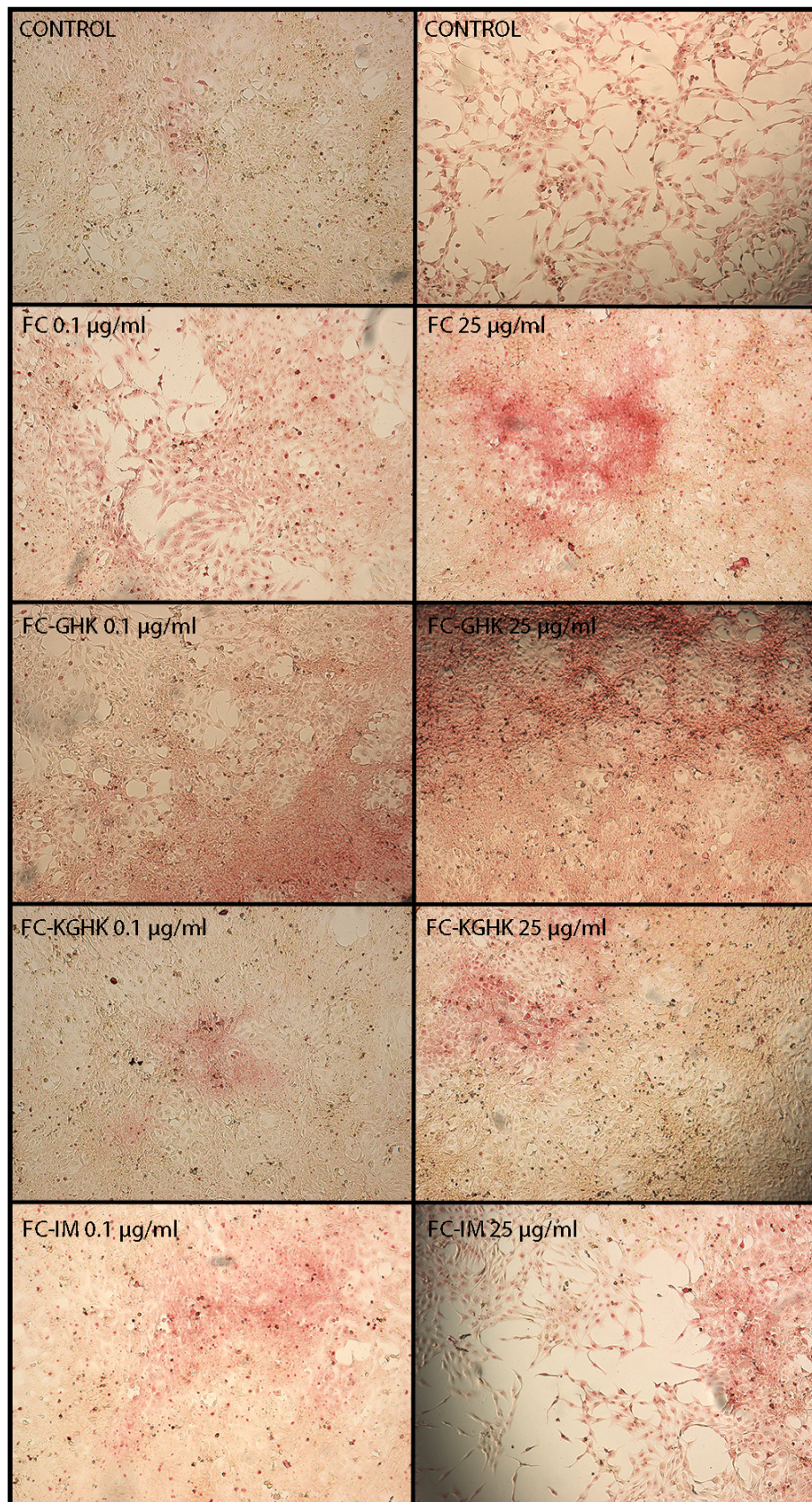


Figure S5. Representative images of direct red 80 staining of collagen (red areas) in 46BR.1N cells stimulated with the tested peptides.